

Figure S1: Perls staining of liver sections, and diaminobenzidine-enhanced Perls staining of heart atria and ventricles sections from wild type (A) and HJV^{-/-} (B) mice following dietary iron manipulations, as described in Fig. 4; magnification: 20x.

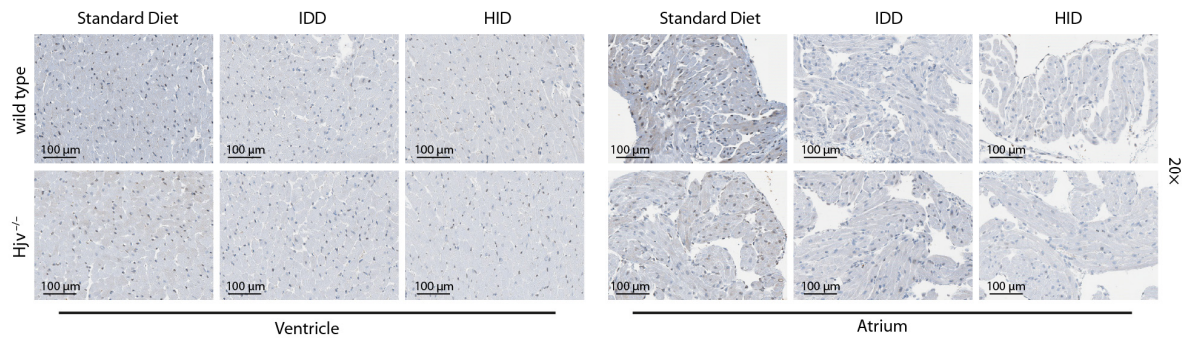


Figure S2: Immunohistochemical staining with a hepcidin antibody. Sections from heart ventricles and atria from mice subjected to dietary iron manipulations similar to those described in Fig. 4 were used for immunohistochemical detection of hepcidin; magnification: 20×.

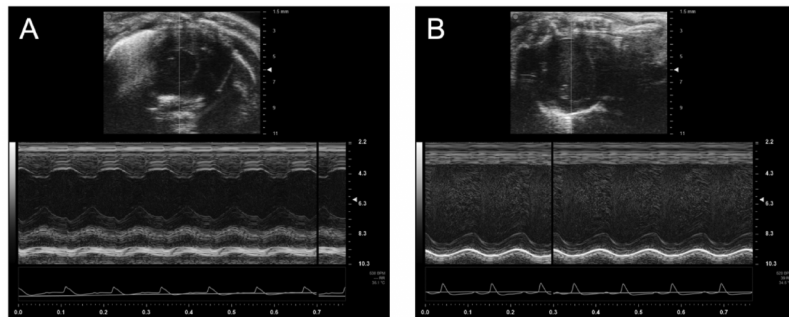


Figure S3: Representative echocardiography in a wild type mouse before (A), and 10 days after myocardial infarction surgery (B). The image shows a 2-D short-axis view of the mid left ventricle (LV) at the level of the papillary muscles.