

Article

Improvement of Qualitative Analyses of Aliphatic Alcohols Using Direct Catalytic Fuel Cell and Chemometric Analysis Format

Mauro Tomassetti ^{1,*} , Federico Marini ^{1,*} , Riccardo Pezzilli ², Mauro Castrucci ¹, Corrado Di Natale ³  and Luigi Campanella ¹ 

¹ Department of Chemistry, University of Rome, “La Sapienza”, P.le A. Moro 5, 00185 Rome, Italy; mauro.castrucci@libero.it (M.C.); luigi.campanella@fondazione.uniroma1.it (L.C.)

² Department of Industrial Engineering, University of Rome “Tor Vergata”, Via del Politecnico 1, 00133 Rome, Italy; riccardo.pezzilli@gmail.com

³ Department of Electronic Engineering, University of Rome “Tor Vergata”, Via del Politecnico 1, 00133 Rome, Italy; dinatale@uniroma2.it

* Correspondence: mauro.tomassetti@uniroma1.it (M.T.); federico.marini@uniroma1.it (F.M.)

Abstract: Direct catalytic methanol fuel cells (DCMFCs) have been studied for several years for energy conversion. Less extensive is the investigation of their analytical properties. In this paper, we demonstrate that the behavior of both the discharge and charge curves of DCMFCs depends on the chemical composition of the solution injected in the fuel cell. Their discharge and charge curves, analyzed using a chemometric data fusion method named ComDim, enable the identification of various types of aliphatic alcohols diluted in water. The results also show that the identification of alcohols can be obtained from the first portion of the discharge and charge curves. To this end, the curves have been described by a set of features related to the slope and intercept of the initial portion of the curves. The ComDim analysis of this set of features shows that the identification of alcohols can be obtained in a time that is about thirty times shorter than the time taken to achieve steady-state voltage.

Keywords: qualitative–quantitative analysis; aliphatic alcohols; direct catalytic methanol fuel cell; chemometrics; data fusion methods



Citation: Tomassetti, M.; Marini, F.; Pezzilli, R.; Castrucci, M.; Di Natale, C.; Campanella, L. Improvement of Qualitative Analyses of Aliphatic Alcohols Using Direct Catalytic Fuel Cell and Chemometric Analysis Format. *Sensors* **2024**, *24*, 3209. <https://doi.org/10.3390/s24103209>

Received: 16 April 2024

Revised: 15 May 2024

Accepted: 16 May 2024

Published: 18 May 2024



Copyright: © 2024 by the authors. Licensee MDPI, Basel, Switzerland. This article is an open access article distributed under the terms and conditions of the Creative Commons Attribution (CC BY) license (<https://creativecommons.org/licenses/by/4.0/>).

1. Introduction

Fuel cells have been mostly investigated for energy conversion applications [1,2]; however, fuel cells such as those making use of methanol or ethanol also shown noteworthy analytical properties [3,4].

For instance, fuel cells (DCMFCs) have been demonstrated to be suitable for quantifying the ethanol in beverages, such as wine or beer and other alcoholic drinks [5,6], with a precision and accuracy often better than those of standard analytical methods, but in a simpler, quicker and less expensive way. Besides beverages, the quantitative detection of ethanol has also been demonstrated in pharmaceutical products [7] and biological fluids, opening up the possibility of forensic applications [7]. Interestingly, molecules characterized by alcohol groups can also be detected by fuel cells; this feature has been tested on antibiotics such as chloramphenicol and imipenem, and on carbohydrates [7,8].

At this point we asked ourselves whether it was possible to use this type of fuel cell to carry out the analysis of different types of organic molecules for the qualitative recognition of different substances as well, and not only their quantitative analysis, especially for molecules of pharmaceutical or biological interest, as well as food. This is due to the fact that this kind of fuel cell provides a response to any organic substance that possesses one very alcoholic group or at least a group with partially alcoholic properties, though they will

obviously have different response intensities depending on the number and the more or less alcoholic characteristics of the group (-OH) that characterizes them. It is clear, however, that, for correctly and simply observing the difference in responses, a method was needed that can comprehensively highlight the response of the fuel cell. We identified this method as the application of a chemometric analysis. This, indeed, has been demonstrated by us in recent research published in *Sensors* [9]. In that paper we highlighted that, if the different substances to be qualitatively recognized have an (-OH) group with quite different alcoholic properties, it was sufficient, in that case, to use an appropriate chemometric method [9] to obtain good separations in the “scores” values, which were obtained from all the data of the single discharge curves of the aforementioned type of fuel cell. We have, indeed, experimentally verified that this format is able to carry out valid qualitative recognitions of any unknown substances with one at least partially alcoholic group [9].

In summary, it was demonstrated that the qualitative (as well as obviously quantitative) recognition of different organic substances with at least one alcoholic group is possible when using only a direct catalytic methanol fuel cell (DCMFC) (Figure 1) simultaneously with an appropriate chemometric processing method for the experimental discharge curve data.

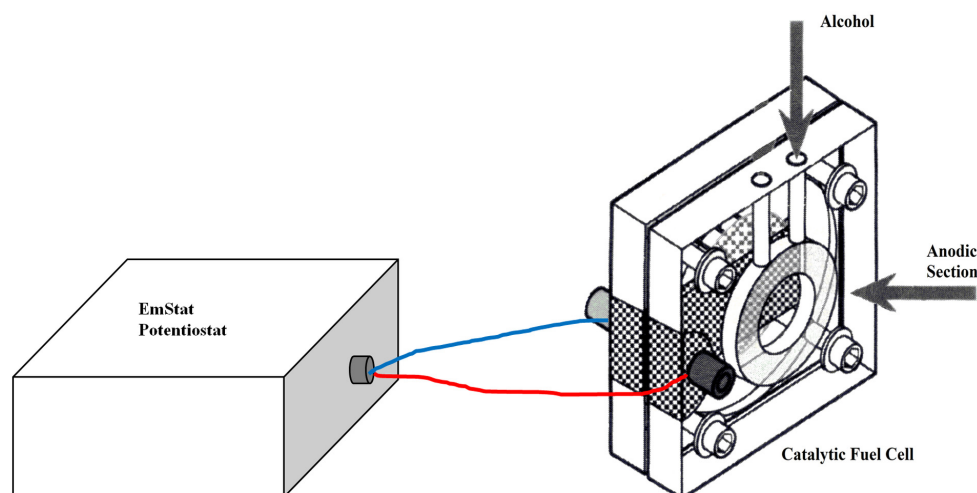


Figure 1. Representation of direct catalytic methanol fuel cell (DCMFC) used in this and previous research.

However, if the substances to be recognized are very chemically similar, such as aliphatic alcohols (mono-alcohols with only linear aliphatic chains, or with modest ramifications), it becomes much more difficult to obtain good separations, even when using chemometric methods. This is due to the “chemical” similarity of the different alcoholic molecules and, therefore, the probable similarity of their subsequent oxidative processes, which occur until H_2O and CO_2 are produced and take place in the catalytic fuel cell. In fact, this kind of fuel cell, which generally uses, as catalysts in its anodic section, classical catalysts based on platinum and ruthenium, generally work according to the same oxidative processes [5].

Despite this, we have now tried to overcome this difficulty, since we realized that if, in addition to the appropriate chemometric methods, exploiting data fusion strategies were applied to distinguish, and, therefore, recognize, the different aliphatic alcohols under consideration, through recording and processing, they could recognize the charge curves in addition to the discharge curves of the catalytic fuel cell. In this regard, we studied six different aliphatic alcohols, for which we recorded not only the usual discharge curves but also their corresponding charge curves, before verifying, with the appropriate chemometric method, the possibility of exploiting data fusion strategies [10] able to distinguish and then recognize the six different aliphatic alcohols considered.

2. Materials and Methods

2.1. Hydroalcoholic Solutions

The six investigated aliphatic alcohols (methanol, ethanol, iso-propanol, propanol, iso-amyl, sec-butanol) were of analytical grade and purchased from Sigma-Aldrich (St. Louis, MO, USA). All the hydroalcoholic solutions which were necessary for recording the discharging or charging curves of the fuel cell were obtained by dissolving the weighed quantity of each alcohol directly in the proper measured volume of distilled and deionized water (final conductivity 0.01–0.02 μS). Using these hydroalcoholic solutions, both the potentiostatic discharge curves (as μA vs. time) and the open-circuit fuel cell loading curves (as voltage vs. time) were recorded for the same fixed concentration of each alcohol.

2.2. Apparatus and Measurements

A H-TEC Model F111 DCMFC ($50 \times 50 \times 40$ mm) weighing 100 g, obtained from the Fuel Cell Store (College Station, TX, USA), was used. The cell was made of Plexiglas®, while the electrode end plate was made of a Pt-Ru black catalyst combined with a Nafion™ membrane. For potentiostatic format measurements, a Palmsens mod. EmStat potentiostat (Houten, The Netherlands) was used, which was connected to the fuel cell with a PStace Software, ver. 4.6, data interface, supplied by a Compaq Presario PC.

For each discharge-format potentiostatic measurement, after an hydroalcoholic solution (about 2 mL) with a fixed alcoholic concentration was introduced into the fuel cell, the supplied current was recorded and read point-by-point up to a steady state. The fuel cell was connected to EmStat using the anode as the working electrode, while the cathode acted as the reference and counter electrode. Before the current discharging measurement, the EmStat automatically measured the Open-Circuit Voltage (OCV) value for a time of about 200 s, and then the anode potential was set to the value of the Optimized Applied Potential ($\text{OAP} = \text{OCV} - 100 \text{ mV}$) [5].

A set of charging measurements was also carried out by the fuel cell, which was filled with each studied hydroalcoholic solution and operated in batch mode. For each measurement, after a hydroalcoholic solution (about 2 mL) with a fixed alcoholic concentration was introduced into the fuel cell, the increase in the potential generated between the respective anodic and cathodic ends of the fuel cell was recorded up to a steady state (taking potential readings every 0.1 s) using the PalmSens, operating, in this case, in an open-circuit mode. The fuel cell operating in an open circuit and in batch mode recorded, in this case, the increase in the voltage charge curves. For every measurement, the voltage value was immediately and continuously recorded for each alcohol, point by point, until a steady state.

Once each of the discharging and charging curves were recorded, in both cases, at this point, the slope and the intercept value of the tangent line at the point of the maximum slope of every obtained curve, whether descending or ascending, was also calculated so as to be able to compare the respective values of the slopes and intercepts of the straight tangent lines obtained for every one of the six evaluated aliphatic alcohols.

2.3. Chemometric Methods

All experimental obtained data have been processed via a multi-block exploratory analysis, using in-house routines written in Matlab. More specifically, the Common Component and Specific Weight Analysis (CCSWA), also known as the Common Dimensions (ComDim) algorithm [10,11], was used.

ComDim can be considered a generalization of principal component analysis (PCA) [12–15] for cases where multiple data matrices are collected to describe the same set of samples. It was first applied in sensory analysis and has gained some popularity in both sensorimetry and chemometrics [10,11,16–18].

ComDim operates by extracting the components which summarize the maximum amount of common information among the different blocks of data under investigation. In practice, ComDim aims to determine the underlying components, together with the

component-specific block weights (or saliencies), that reflect the importance that the various blocks of variables attributed to these components. In fact, using ComDim, a single set of scores can be extracted from all the data blocks considered. After that, given the scores, loadings are calculated for each matrix which can then be used for the interpretation of the observed variance.

Briefly [10,11,16–18], we consider a set of M data matrixes X_m $m = 1 \dots M$ sharing the same number of samples n , but possibly with a different number of variables. Each matrix is assumed to be mean-centered and further scaled to unit Frobenius' norm, so to make the variance of the different blocks comparable. Then, by defining, for each block, the cross-product matrix $W_m = X_m X_m^T$, ComDim components are calculated based on the following iterative procedure.

For each component j :

1. Initialize the saliencies: $\lambda_j^{(m)} = 1 \quad \forall m = 1, \dots, M$
2. Estimate q_j as the first left singular vector of $W = \sum_{m=1}^M \lambda_j^{(m)} W_m$
3. Update the saliencies as $\lambda_j^{(m)} = q_j^T W_m q_j$
4. Repeat steps 2–3 until convergence.
5. Deflate each block: $X_m^{(j+1)} = X_m^{(j)} - q_j q_j^T X_m^{(j)} \Rightarrow W_m^{(j+1)} = W_m^{(j)} - \lambda_j^{(m)} q_j q_j^T$
6. Extract successive components by repeating steps 1–5 on $W_m^{(j+1)}$

The F-extracted common components (CCs) are then collected in the scores' matrix $Q = [q_1 \ q_2 \ \dots \ q_F]$, so that, for each block, the corresponding loadings can be calculated as $P_m = X_m^T Q$.

3. Results

To prove the assumption of this research, the usual discharge curves were constructed (and repeated at least three times) for each studied alcohol by recording the current of hydroalcoholic solutions with the same concentration until they reached a steady state. The voltage charge curves of each of the six studied alcohols were then also constructed, recorded, and repeated at least three times in fuel cells operating, of course, in this case, in an open-circuit mode, using hydroalcoholic solutions with the same concentration. Each experimental curve thus obtained is shown in Figures 2 and 3, respectively, while their numerical files are reported in Supplementary Materials.

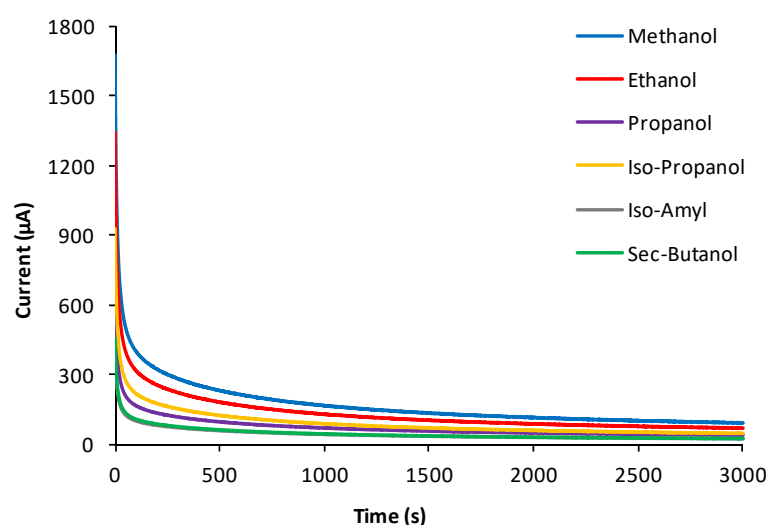


Figure 2. “Discharge curves”, i.e., the current discharging response trends of $5 \times 10^{-4} \text{ mol L}^{-1}$ aqueous solutions of each of the six investigated alcohols, all data points of which constitute the data set under investigation. Each curve represents the mean of at least three determinations.

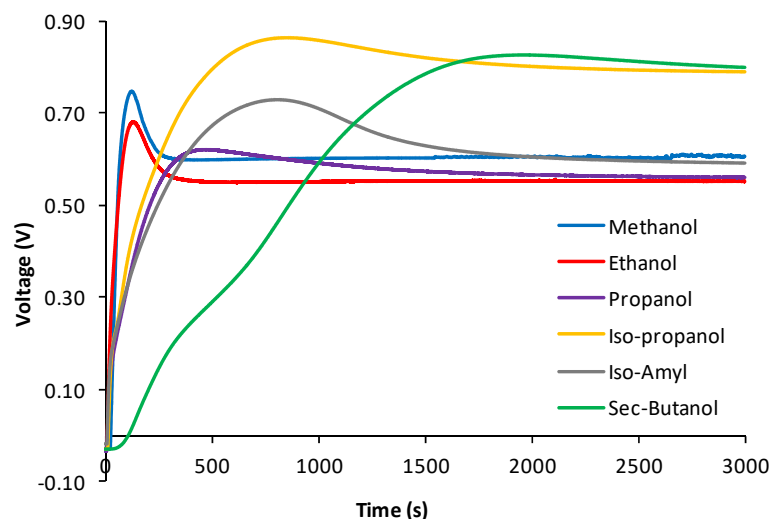


Figure 3. “Charge curves”, i.e., the voltage charging response trends of $5 \times 10^{-1} \text{ mol L}^{-1}$ aqueous solutions of the six alcohols under investigation, all data points of which also constitute the data set under investigation. Each curve represents the mean of at least three determinations.

The possibility of exploiting data fusion strategies, by means of ComDim in particular [10] (a multi-block generalization of principal component analysis), to simultaneously process the resulting data matrices derived from both the discharging and charging process curves (in Figures 2 and 3) of six hydroalcoholic solutions made of different hydroalcoholic aliphatic alcohols, with the same concentrations, placed successively into a fuel cell made it possible to obtain a good separation even if the six studied alcohols were not very different, as they were all aliphatic (see Figure 4).

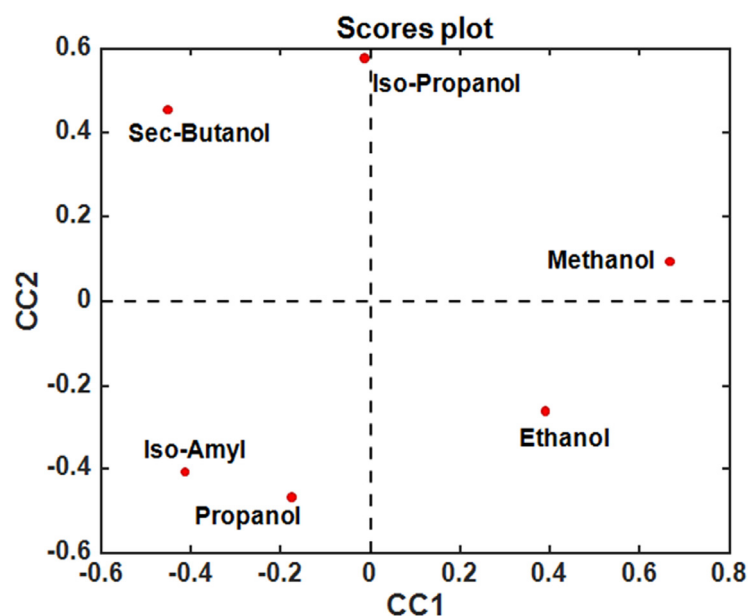


Figure 4. Score plot. Projection of the six analyzed alcohols onto the first two common components (CC1 and CC2) extracted by ComDim.

Figure 5 shows the loadings of the discharge and charge blocks along CC1 and CC2, displayed as line plots, as a function of time.

It can be observed how, in the case of the discharge curves, both the CC1 and CC2 curves have a continuous downward trend over time, very closely mirroring the downward trend—initially rapid, and then very slow, until a stabilization of their values—of the original discharging curves in Figure 2. On the other hand, the charging curves have more

complex trends as a function of time, which also reflect the more varied trends of the values of the charging curves shown in Figure 3. This confirms the greater level of information in the charging curves, compared to the discharging curves, provided by the fuel cell.

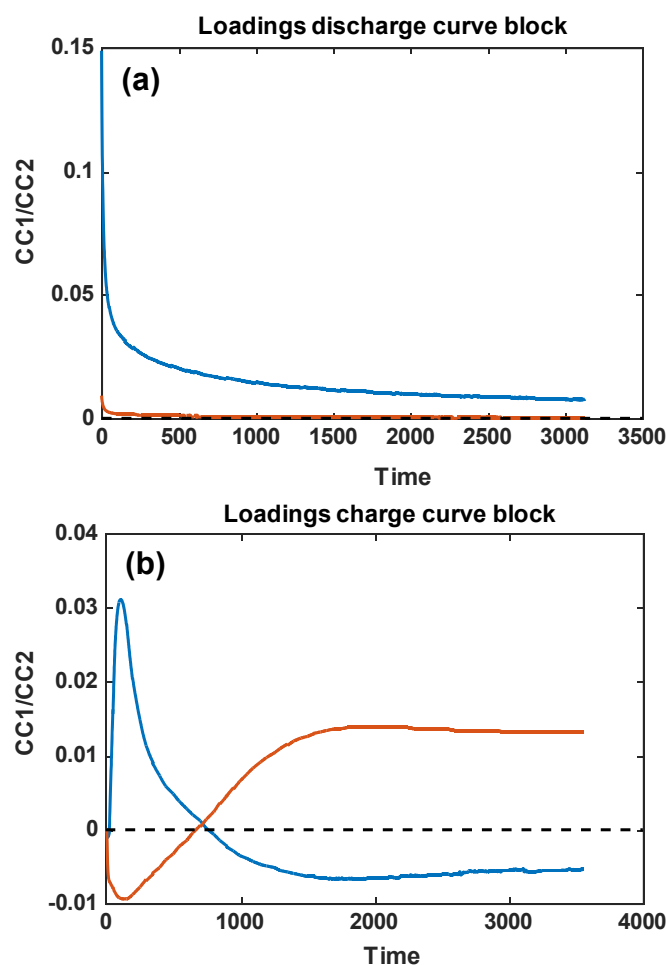


Figure 5. Loading projections of the six analyzed alcohols onto the first two common components, as extracted by ComDim. (a) Loading discharge curve block and (b) loading charge curve block. Blue lines correspond to CC1, while the orange ones correspond to CC2.

Although the results of this method were undoubtedly accurate, a certain inconvenience manifested itself in the inevitable lengthening of time of the total process of the analysis. In fact, in this case, as has been said, the method involves recording not only each of the discharge curves, but also each of the charge curves, of each of the individual alcohols. These charge latter curves, although seeming to contain more information than the discharge ones, take a rather long time to be recorded (about an hour, or even more), since it is well known that the total oxidative process proceeds through various steps with set periods [2,3,19–23], which create a significant increase in total analysis times.

Therefore, we next investigated whether there was the possibility of overcoming this problem too, since we noticed that the trends of the curves, both for the discharging and even more so for the charging process, are characterized by a very fast initial trend, which is then followed by a rather slow process until reaching almost constant values (observe the typical curves of the respective discharging and charging processes in Figures 2 and 3). We realized that, if the most rectilinear parts, both descending and ascending, of the respective discharging and charging curves of the different alcohols studied were selected, by calculating the equations of the straight lines of the tangents and relating these to the straighter parts of these curves, and the ComDim method was applied [10,18] once again, but only to the parameters of the equations of the straight tangent lines obtained (and

reported in Tables 1 and 2), it would be easy to arrive at a much simpler data matrix. From this new matrix, it was possible to obtain, again by means of the ComDim algorithm, a sufficiently acceptable separation of the “scores” most representative of the different alcohols, as is shown in Figure 6, and we especially observed how this result could be obtained by using at least one-thirtieth of the experimental time necessary to record the entire charge and discharge curves of the total charging and discharging processes of the fuel cell and then processing all the data reported in the Supplementary Materials using chemometrics, as achieved previously.

Table 1. Values of the equation parameters of the tangent to the straight-line part of the discharge curves.

Alcohol Investigated	Slope ($\mu\text{A/s}$)	Slope SD	Intercept (μA)	Intercept SD	Slope Ratio %
Methanol	−125.3345	± 10.64253	1683.88899	± 13.75317	100.000
Ethanol	−175.4311	± 29.98601	1468.58510	± 89.51645	139.9703194
Iso-propanol	−267.34291	± 21.08728	1254.20004	± 235.11949	213.3035278
Propanol	−320.98941	± 28.08175	1129.06917	± 320.16881	256.1061799
Iso Amyl	−381.46361	± 37.75922	988.01255	± 416.05487	304.3564302
Sec-Butilic	−373.47291	± 36.43792	1006.65093	± 403.38463	297.980931

Table 2. Values of the equation parameters of the tangent to the straight-line part of the charge curves.

Alcohols Investigated	Slope (V/s)	Slope SD	Intercept (V)	Intercept SD	Slope Ratio %
Methanol	0.01233	$\pm 2.09695 \times 10^{-4}$	−0.23293	$\pm 1.21010 \times 10^{-2}$	100.000
Ethanol	0.00548	$\pm 1.23101 \times 10^{-5}$	−0.15746	$\pm 7.73909 \times 10^{-4}$	44.4444444
Iso-propanol	0.00129	$\pm 4.62291 \times 10^{-6}$	−0.27865	$\pm 9.35781 \times 10^{-4}$	10.4622871
Propanol	0.00109	$\pm 2.34966 \times 10^{-6}$	−0.27218	$\pm 5.39314 \times 10^{-4}$	8.84022709
Iso Amyl	9.69E-04	$\pm 3.37833 \times 10^{-6}$	−0.26091	$\pm 8.77158 \times 10^{-4}$	7.85951338
Sec-Butilic	6.88E-04	$\pm 5.05715 \times 10^{-7}$	−0.09273	$\pm 4.22026 \times 10^{-4}$	5.58276561

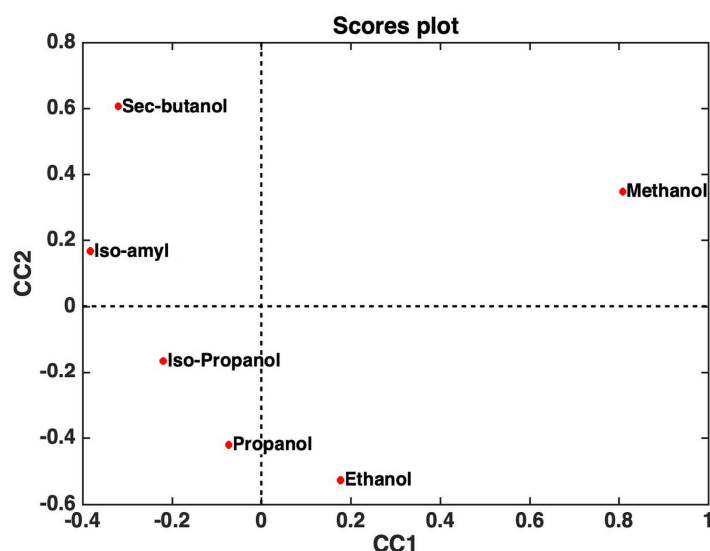


Figure 6. Projection of the six analyzed alcohols onto the first two common components (CC1 and CC2), extracted by a “multiblock” exploratory analysis of the data set, which resulted from fitting the parameters, reported in Tables 1 and 2, of the straight-line equations of the tangents related to these straighter parts of the discharging and charging curves.

Finally, the loadings of the fitting parameters, calculated from the equations of the tangents of the discharge and charge curves, of the first two common components are displayed in Figure 7.

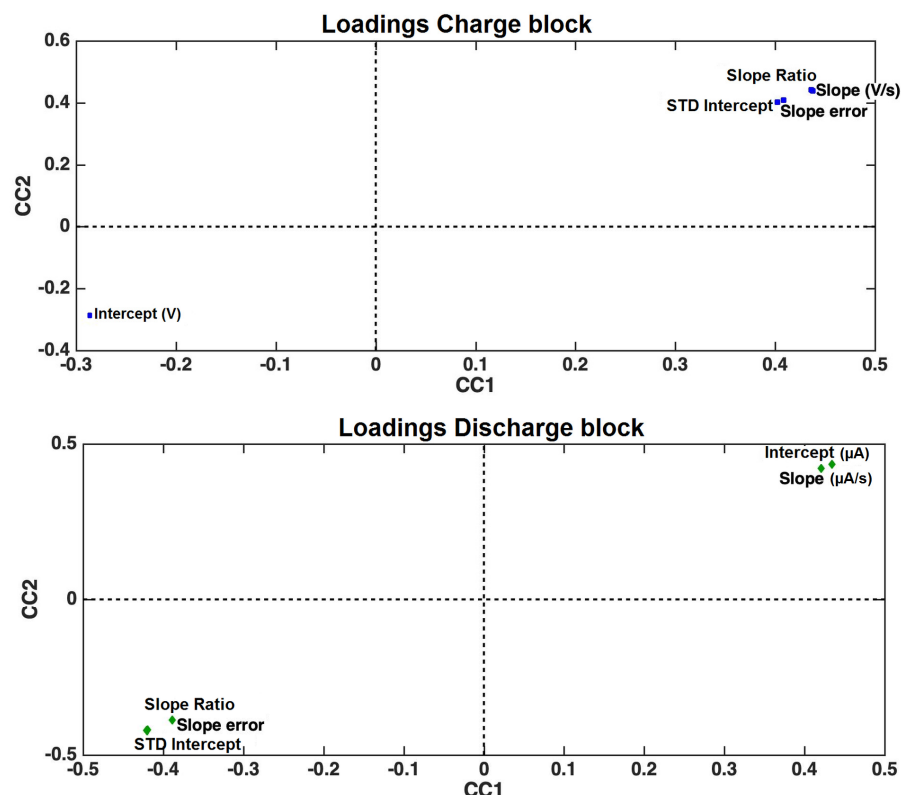


Figure 7. Representations of the loadings of the charge (upper panel) and discharge (lower panel) curves, obtained by applying ComDim to the data set created using only the data reported in Tables 1 and 2.

An inspection of the loadings in Figure 7 suggests that all the fitting parameters are relevant to explaining the differences observed among the alcohols. Methanol is characterized by higher values for almost all the fitting parameters of its charge curve (except for the intercept) and higher values for the intercept and slope of its discharge curve. On the other hand, higher values of the intercept of the charge curve and higher values of the slope ratio and the slope and intercept STD characterize iso-propanol and propanol.

Finally, there is, naturally, the possibility of carrying out a quantitative analysis of each of the alcohols highlighted too, by constructing the usual respective calibration curves for each alcohol as a function of time, increasing by the time each alcohol's concentration in the hydroalcoholic solutions (see Table 3), and then using the fuel cell response, i.e., the final point values of the discharge curves, as was possible in previous research [5–8].

Table 3. Straight-line regression equations of each alcohol vs. the increasing alcohol concentration used in the hydroalcoholic solutions.

	Regression Equation [y = ax + b]		Linearity Range [mol L ⁻¹]
	a [μA/mol L ⁻¹]	b [μA]	
Methanol	$(21.8 \pm 0.7) \times 10^3$	75.9 ± 3.2	$(1.0 \times 10^{-3} - 8.0 \times 10^{-1})$
Ethanol	$(17.8 \pm 0.6) \times 10^3$	61.1 ± 3.0	$(1.0 \times 10^{-3} - 8.0 \times 10^{-1})$
Iso-propanol	$(4.27 \pm 0.08) \times 10^3$	47.0 ± 2.7	$(8.5 \times 10^{-4} - 8.0 \times 10^{-1})$
Propanol	$(3.32 \pm 0.1) \times 10^3$	35.0 ± 1.6	$(7.5 \times 10^{-4} - 8.0 \times 10^{-1})$
Iso-Amyl	$(2.21 \pm 0.3) \times 10^3$	20.1 ± 2.1	$(6.5 \times 10^{-4} - 8.0 \times 10^{-1})$
Sec-Butanol	$(2.43 \pm 0.4) \times 10^3$	22.4 ± 1.9	$(6.5 \times 10^{-4} - 8.0 \times 10^{-1})$

4. Discussion and Conclusions

As is well known, there are many methods for the quantitative and qualitative analysis of alcoholic substances. Leaving aside the oldest chemical assays [24] or densitometric ones used, above all, for ethanol [25], there are quite a few instrumental methods for the determination of alcoholic substances, which are based on gas chromatography [26,27], liquid chromatography, HPLC and ion chromatography [28–30], GC-MS [31], and also on colorimetric [32] and spectrophotometric methods (UV-Vis) [33,34], or NIR [35–37], and so on. There is no shortage of sensorial methods either [38–40]. Each of these methods is generally used as an alternative to the others, mainly because it is better suited to certain types of matrices than others. The aim of the present work, therefore, was not to propose a method that intends to replace the classical methods reported above. Rather, it was to propose a new method for the qualitative analysis of different aliphatic alcohols, based on very modern technologies, which are also rather infrequently applied to problems of this type, such as particular fuel cells and classic [15] or very recent [10] chemometric procedures. The aim was to, therefore, let the reader know that this new analytical possibility also exists and has the advantages of being very simple, rapid, and, above all, of not requiring very expensive instrumental equipment.

We consider, therefore, the results obtained in this paper to be of remarkable interest, since, first of all, we realized that by recording and processing not only the discharging curves of a catalytic fuel cell but also its charging curves, using the same alcohols and, in addition, appropriate chemometric methods (i.e., the possibility of exploiting data fusion strategies), the fuel cell itself can easily distinguish and, therefore, recognize very similar aliphatic alcohols as well. Secondly, we demonstrated a drastic shortening of times, which actually makes the application of this type of qualitative analysis, if the most rectilinear parts, both descending and ascending, of the respective discharging and charging curves of the various alcohols are selected, then calculating the equations of the straight lines of the tangents relating to the straighter parts of these curves. By applying the ComDim fusion method [10], once again, the parameters of the equations of the tangents of the straight-line parts of the ascending and descending curves can be obtained. In brief, when working with this type of format, i.e., using only the fuel cell (DCMFC) and ComDim data fusion strategy, this proposed aliphatic alcohol recognition method becomes more practical and much more acceptable.

Finally, despite this paper having shown that DCMFC results, once analyzed using a chemometrics data treatment, are a valid and simple alternative format for the detection and identification of organic molecules characterized by at least one alcohol group, a likely further improvement of this format will be made possible by the integration, into the anodic compartment of the DCMFC device, of nanostructured materials, such as Layered Double Hydroxides (LDHs), also known as hydrotalcite-like compounds (or even enzymes such as catalase) [23].

Supplementary Materials: The following supporting information can be downloaded at <https://www.mdpi.com/article/10.3390/s24103209/s1>.

Author Contributions: M.T.: conceptualization, methodology, and writing—original draft preparation; F.M.: conceptualization, software, validation, and writing—original draft preparation; R.P.: methodology and data curation; M.C.: software, validation, and data curation; C.D.N.: supervision, visualization, and language supervision; L.C.: supervision and visualization. All authors have read and agreed to the published version of the manuscript.

Funding: This research received no external funding.

Institutional Review Board Statement: Not applicable.

Informed Consent Statement: Not applicable.

Data Availability Statement: All experimental data are available in the Supplementary Materials and in the text of this paper.

Acknowledgments: This work has been logistically supported by first University of Rome “La Sapienza” and Second University of Rome “Tor Vergata”.

Conflicts of Interest: The authors declare no conflicts of interest.

References

- Carrette, L.; Friedrich, K.A.; Stimming, U. Fuel Cells: Principles, Types, Fuels, and Applications. *ChemPhysChem* **2000**, *1*, 162–193. [\[CrossRef\]](#)
- Hancock, G.; Compton, R.G. *Applications of Kinetic Modelling*, 1st ed.; Elsevier: Amsterdam, The Netherlands, 1999; ISBN 978-0-444-50164-6.
- Hamnett, A. Mechanism and Electrocatalysis in the Direct Methanol Fuel Cell. *Catal. Today* **1997**, *38*, 445–457. [\[CrossRef\]](#)
- Zhao, H.; Shen, J.; Zhang, J.; Wang, H.; Wilkinson, D.P.; Gu, C.E. Liquid Methanol Concentration Sensors for Direct Methanol Fuel Cells. *J. Power Sources* **2006**, *159*, 626–636. [\[CrossRef\]](#)
- Tomassetti, M.; Angeloni, R.; Merola, G.; Castrucci, M.; Campanella, L. Catalytic fuel cell used as an analytical tool for methanol and ethanol determination. Application to ethanol determination in alcoholic beverages. *Electrochim. Acta* **2016**, *191*, 1001–1009. [\[CrossRef\]](#)
- Tomassetti, M.; Angeloni, R.; Castrucci, M.; Martini, E.; Campanella, L. Ethanol content determination in hard liquor drinks, beers, and wines, using a catalytic fuel cell. Comparison with other two conventional enzymatic biosensors: Correlation and statistical data. *Acta IMEKO* **2018**, *7*, 91–95. [\[CrossRef\]](#)
- Tomassetti, M.; Angeloni, R.; Marchiandi, S.; Castrucci, M.; Sammartino, M.; Campanella, L. Direct Methanol (or Ethanol) Fuel Cell as Enzymatic or Non-Enzymatic Device, Used to Check Ethanol in Several Pharmaceutical and Forensic Samples. *Sensors* **2018**, *18*, 3596. [\[CrossRef\]](#) [\[PubMed\]](#)
- Tomassetti, M.; Dell’Aglia, E.; Castrucci, M.; Sammartino, M.P.; Campanella, L.; Di Natale, C. Simple Yeast-Direct Catalytic Fuel Cell Bio-Device: Analytical Results and Energetic Properties. *Biosensors* **2021**, *11*, 45. [\[CrossRef\]](#)
- Tomassetti, M.; Marini, F.; Angeloni, R.; Castrucci, M.; Campanella, L.; Di Natale, C. Direct Catalytic Fuel Cell Device Coupled to Chemometric Methods to Detect Organic Compounds of Pharmaceutical and Biomedical Interest. *Sensors* **2020**, *20*, 3615. [\[CrossRef\]](#)
- Qannari, E.M.; Wakeling, I.; Courcoux, P.; MacFie, H.J.H. Defining the underlying sensory dimensions. *Food. Qual. Prefer.* **2000**, *11*, 151–154. [\[CrossRef\]](#)
- Cariou, V.; Qannari, E.M.; Rutledge, D.N.; Vigneau, E. ComDim: From multiblock data analysis to path modeling. *Food. Qual. Prefer.* **2018**, *67*, 27–34. [\[CrossRef\]](#)
- Pearson, K. On lines and planes of closest fit to systems of points in space. *Philos. Mag.* **1901**, *2*, 559–572. [\[CrossRef\]](#)
- Hotelling, H. Analysis of a Complex of Statistical Variables into Principal Components. *J. Educ. Psychol.* **1933**, *24*, 417–441. [\[CrossRef\]](#)
- Wold, S.; Esbensen, K.; Geladi, P. Principal component analysis. *Chemom. Intell. Lab. Syst.* **1987**, *2*, 37–52. [\[CrossRef\]](#)
- Jolliffe, I.T. *Principal Component Analysis*, 2nd ed.; Springer Series in Statistics; Springer: New York, NY, USA, 2002.
- El Ghaziri, A.; Cariou, V.; Rutledge, D.N.; Qannari, E.M. Analysis of multiblock datasets using ComDim: Overview and extension to the analysis of (K + 1) datasets. *J. Chemom.* **2016**, *30*, 420–429. [\[CrossRef\]](#)
- Bouveresse, D.J.-R.; Rutledge, D.N. A synthetic review of some recent extensions of ComDim. *J. Chemom.* **2022**, *38*, e3454. [\[CrossRef\]](#)
- Mishra, P.; Roger, J.-M.; Bouveresse, D.J.-R.; Biancolillo, A.; Marini, F.; Nordon, A.; Rutledge, D.N. Recent trends in multi-block data analysis in chemometrics for multisource data integration. *Trends Anal. Chem.* **2021**, *137*, 116206. [\[CrossRef\]](#)
- Wasmus, S.; Küver, A. Methanol oxidation and direct methanol fuel cells: A selective review. *J. Electroanal. Chem.* **1999**, *461*, 14–31. [\[CrossRef\]](#)
- Liu, H.; Song, C.; Zhang, L.; Zhang, J.; Wang, H.; Wilkinson, D.P. A review of anode catalysis in the direct methanol fuel cell. *J. Power Sources* **2006**, *155*, 95–110. [\[CrossRef\]](#)
- Zhao, J.; Shao, M.; Yan, D.; Zhang, S.; Lu, Z.; Li, Z.; Cao, X.; Wang, B.; Wei, M.; Evans, D.G.; et al. A hierarchical heterostructure based on Pd nanoparticles/layered double hydroxide nanowalls for enhanced ethanol electrooxidation. *J. Mater. Chem. A* **2013**, *1*, 5840–5846. [\[CrossRef\]](#)
- Bagotzky, V.S.; Vassiliev, Y.B.; Khazova, O.A. Generalized scheme of chemisorption, electrooxidation and electroreduction of simple organic compounds on platinum group metals. *J. Electroanal. Chem. Interfacial Electrochem.* **1977**, *81*, 229–238. [\[CrossRef\]](#)
- Tomassetti, M.; Pezzilli, R.; Leonardi, C.; Prestopino, G.; Di Natale, C.; Campanella, L.; Medaglia, P.G. A Direct Catalytic Ethanol Fuel Cell (DCEFC) Modified by LDHs, or by Catalase-LDHs, and Improvement in Its Kinetic Performance: Applications for Human Saliva and Disinfectant Products for COVID-19. *Biosensors* **2023**, *13*, 441. [\[CrossRef\]](#) [\[PubMed\]](#)
- Esposito, P.; Javarone, C.; Trogolo, C. *Analisi Organica Qualitativa*; Euroma (Editrice Universitaria di Roma)—La Goliardica: Rome, Italy, 1992; pp. 191–204.
- Strunk, D.H.; Aicken, J.C.; Hamman, J.W.; Andreasen, A.A. Density Meter Determination of Proof of Ethanol-Water Solutions—Collaborative Study. *J. AOAC Int.* **1982**, *65*, 218–223. [\[CrossRef\]](#)

26. Giacometti, J. Determination of Aliphatic Alcohols, Squalene, A-Tocopherol and Sterols in Olive Oils: Direct Method Involving Gas Chromatography of the Unsaponifiable Reaction Following Silylation. *Analyst* **2001**, *126*, 472–475. [[CrossRef](#)] [[PubMed](#)]
27. Cozzi, R.; Protti, P.; Ruaro, T. *Analisi Chimica e Strumentale. Volume C. Metodi Cromatografici. Metodi di Misura e Trattamento dei Dati*; Zanichelli Editore: Bologna, Italy, 1997.
28. Munaf, E.; Zein, R.; Jin, J.-Y.; Takeuchi, T. Liquid Chromatographic Determination of Alcohols in Food and Beverages with Indirect Polarimetric Detection Using a β -Cyclodextrin Mobile Phase. *Anal. Sci.* **2002**, *18*, 903–906. [[CrossRef](#)] [[PubMed](#)]
29. Goss, J. Reverse Phase High-Performance Liquid Chromatographic Determination of Primary and Secondary Aliphatic Alcohols as Phthalate Monoesters by UV Detection. *Chromatographia* **1994**, *38*, 417–420. [[CrossRef](#)]
30. Liu, L.K.; Wong-Leung, M.Y.L.; Lee, A.W.M.; Li, K.C. Simultaneous Determination of Primary and Secondary Aliphatic Alcohols by Reversed Phase Ion-Pair Chromatography. *Anal. Proc.* **1995**, *32*, 271–272. [[CrossRef](#)]
31. Korban, A.; Charapitsa, S.; Čabala, R.; Sobolenko, L.; Egorov, V.; Sytova, S. Advanced GC–MS Method for Quality and Safety Control of Alcoholic Products. *Food Chem.* **2021**, *338*, 128107. [[CrossRef](#)]
32. Haynes, A.; Halpert, P.; Levine, M. Colorimetric Detection of Aliphatic Alcohols in β -Cyclodextrin Solutions. *ACS Omega* **2019**, *4*, 18361–18369. [[CrossRef](#)]
33. He, M.; Chen, X.; Zhang, J.; Li, J.; Zhao, D.; Huang, Y.; Huo, D.; Luo, X.; Hou, C. Identification of Liquors from the Same Brand Based on Ultraviolet, Near-Infrared and Fluorescence Spectroscopy Combined with Chemometrics. *Food Chem.* **2023**, *400*, 134064. [[CrossRef](#)]
34. Nielsen, S. *Food Analysis*, 4th ed.; Springer: New York, NY, USA, 2010.
35. Debebe, A.; Anberbir, A.; Redi-Abshiro, M.; Chandravanshi, B.S.; Asfaw, A.; Asfaw, N.; Retta, N. Alcohol Determination in Distilled Alcoholic Beverages by Liquid Phase Fourier Transform Mid-Infrared and Near-Infrared Spectrophotometries. *Food Anal. Methods* **2017**, *10*, 172–179. [[CrossRef](#)]
36. Da Costa Fulgêncio, A.C.; Passos Resende, G.A.; Fontoura Teixeira, M.C.; Gonçalves Botelho, B.; Martins Sena, M. Combining Portable NIR Spectroscopy and Multivariate Calibration for the Determination of Ethanol in Fermented Alcoholic Beverages by a Multi-Product Model. *Talanta Open* **2023**, *7*, 100180. [[CrossRef](#)]
37. Tipparat, P.; Lapanantnoppakhun, S.; Jakmunee, J.; Grudpan, K. Determination of Ethanol in Liquor by Near-Infrared Spectrophotometry with Flow Injection. *Talanta* **2001**, *53*, 1199–1204. [[CrossRef](#)] [[PubMed](#)]
38. Guo, Y.; Xue, S.; Dirtu, M.M.; Garcia, Y. A Versatile Iron(ii)-Based Colorimetric Sensor for the Vapor-Phase Detection of Alcohols and Toxic Gases. *J. Mater. Chem. C* **2018**, *6*, 3895–3900. [[CrossRef](#)]
39. Li, Z.; Askim, J.R.; Suslick, K.S. The Optoelectronic Nose: Colorimetric and Fluorometric Sensor Arrays. *Chem. Rev.* **2019**, *119*, 231–292. [[CrossRef](#)]
40. Alizadeh, N.; Babaei, M.; Alizadeh, M.S.; Mani-Varnosfaderani, A. Simultaneous Analysis of Aliphatic Alcohols Mixtures Using an Electronic Nose Based on Nano/Microstructured Conducting Polypyrrole Film Prepared by Catalytic Electropolymerization on Cu/Au Interdigital Electrodes Using Multivariate Calibration. *IEEE Sens. J.* **2016**, *16*, 418–425. [[CrossRef](#)]

Disclaimer/Publisher’s Note: The statements, opinions and data contained in all publications are solely those of the individual author(s) and contributor(s) and not of MDPI and/or the editor(s). MDPI and/or the editor(s) disclaim responsibility for any injury to people or property resulting from any ideas, methods, instructions or products referred to in the content.