

Table S1. Extraction yield of *D. confragosa* analyzed EtOH extracts.

Sample	Yield of Extracts	Extraction
	g/10 g d.w.	% (w/w)
<i>D. confragosa</i> (DC)	0.31 ± 0.05	3.09
<i>D. confragosa</i> HD (DCHD)	0.006 ± 0.05	0.63

HD - this extract is prepared using the hydrodistillation technique. The data is presented as the mean ± standard deviation of triplicate measurements.

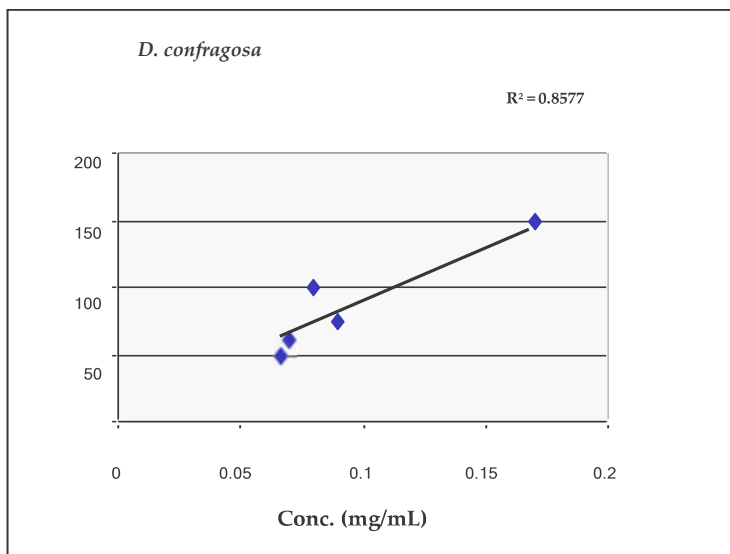


Figure S1. Dependence of the reciprocal value of the hemolysis rate $1/t_{0.5}$ (min) on the extract concentration (mg/mL).