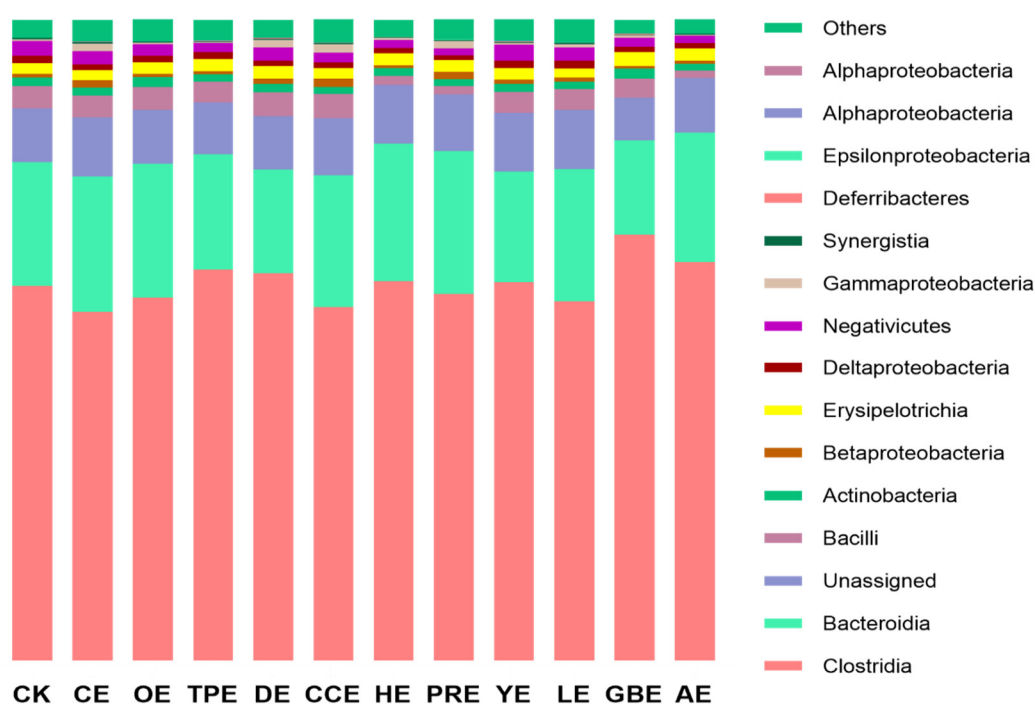
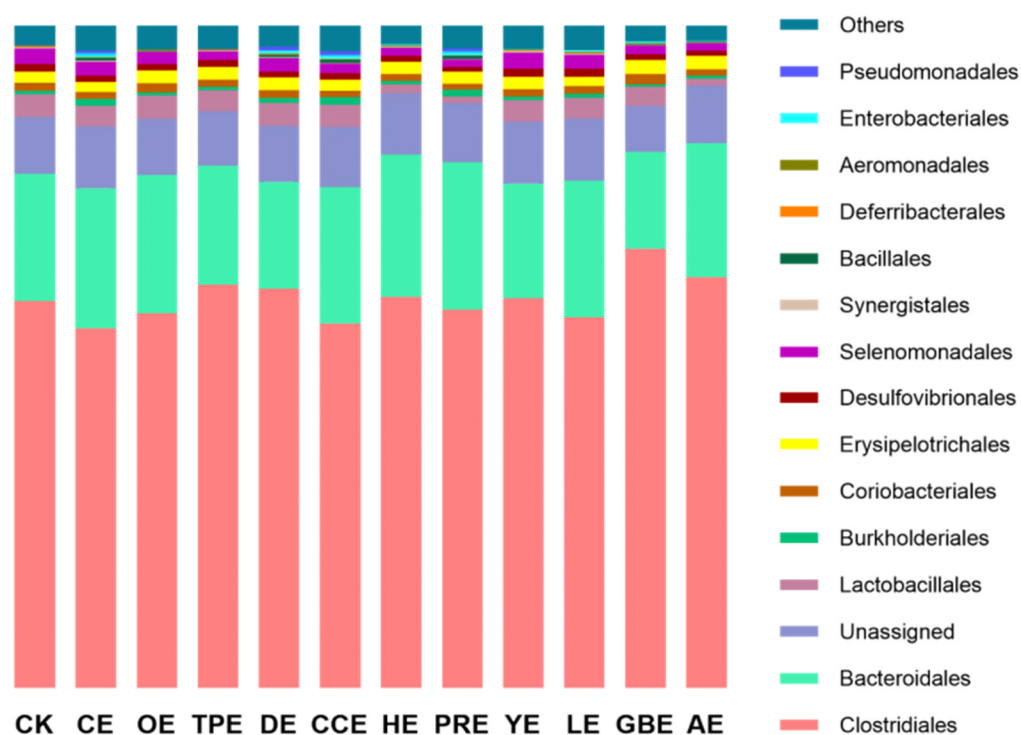


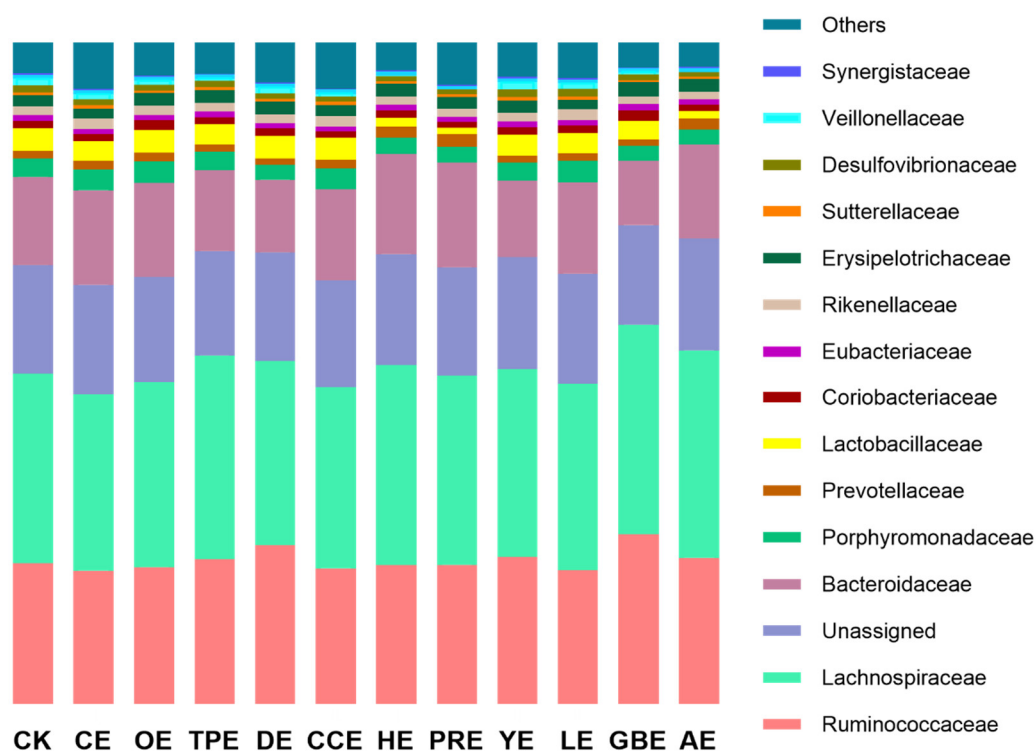
**Figure S1.** Effect of different types of Chinese herbal extracts on shannon index of fermentation bacteria. CK-control group, CE-Cinnamon Extract, OE-Osmanthus Extract, TPE-Tangerine Peel Extract, DE-Dandelion Extract, CCE-Coptis Chinensis Extract, HE-Honeysuckle Extract, PRE-Pulsatilla Root Extract, YE-Yucca Extract, LE-Licorice Extract, GBE-Ginkgo Biloba Extract, AE-Astragalus Extract.



**Figure S2.** Effect of different types of Chinese herbal extracts on the class of the microbial community. CK-control group, CE-Cinnamon Extract, OE-Osmanthus Extract, TPE-Tangerine Peel Extract, DE-Dandelion Extract, CCE-Coptis Chinensis Extract, HE-Honeysuckle Extract, PRE-Pulsatilla Root Extract, YE-Yucca Extract, LE-Licorice Extract, GBE-Ginkgo Biloba Extract, AE-Astragalus Extract.



**Figure S3.** Effect of different types of Chinese herbal extracts on the order of the microbial community. CK-control group, CE-Cinnamon Extract, OE-*Osmanthus* Extract, TPE-Tangerine Peel Extract, DE-Dandelion Extract, CCE-*Coptis Chinensis* Extract, HE-Honeysuckle Extract, PRE-*Pulsatilla* Root Extract, YE-*Yucca* Extract, LE-Licorice Extract, GBE-*Ginkgo Biloba* Extract, AE-*Astragalus* Extract.



**Figure S4.** Effect of different types of Chinese herbal extracts on the family of the microbial community. CK-control group, CE-Cinnamon Extract, OE-Osmanthus Extract, TPE-Tangerine Peel Extract, DE-Dandelion Extract, CCE-Coptis Chinensis Extract, HE-Honeysuckle Extract, PRE-Pulsatilla Root Extract, YE-Yucca Extract, LE-Licorice Extract, GBE-Ginkgo Biloba Extract, AE-Astragalus Extract.