

Table S1. Embryo sampling details for NP exposure experiments.

Groups	Parallel replicates (Petri dishes)	Embryos per Petri dish	Tubes collected at each time point	Embryos per tube
0 $\mu\text{mol/L}$ NP	5	300	3	30
3 $\mu\text{mol/L}$ NP	5	300	3	30

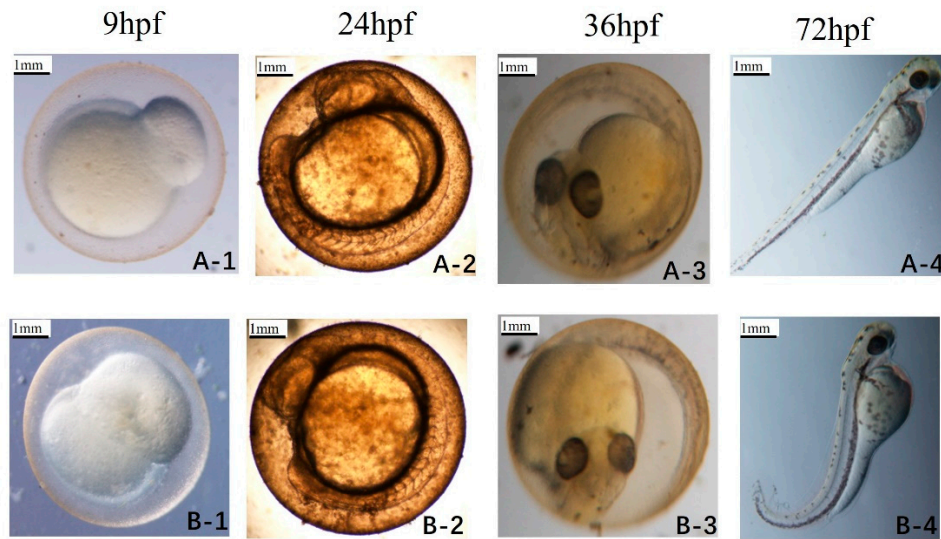


Figure S1. Morphological changes of the *Carassius auratus* red var. embryos at different developmental stages exposed to NP (Figures A1-4 represent the control group, B1-4 represent the treated group).