

Figure S1. Comparative analysis of antioxidant activity (DPPH[•]) in aqueous extracts of *O. nervosum* ssp. *platylepis* (A: flowers, B: leaves, C: stems), from both spontaneous (a) and cultivated (b) thistle.

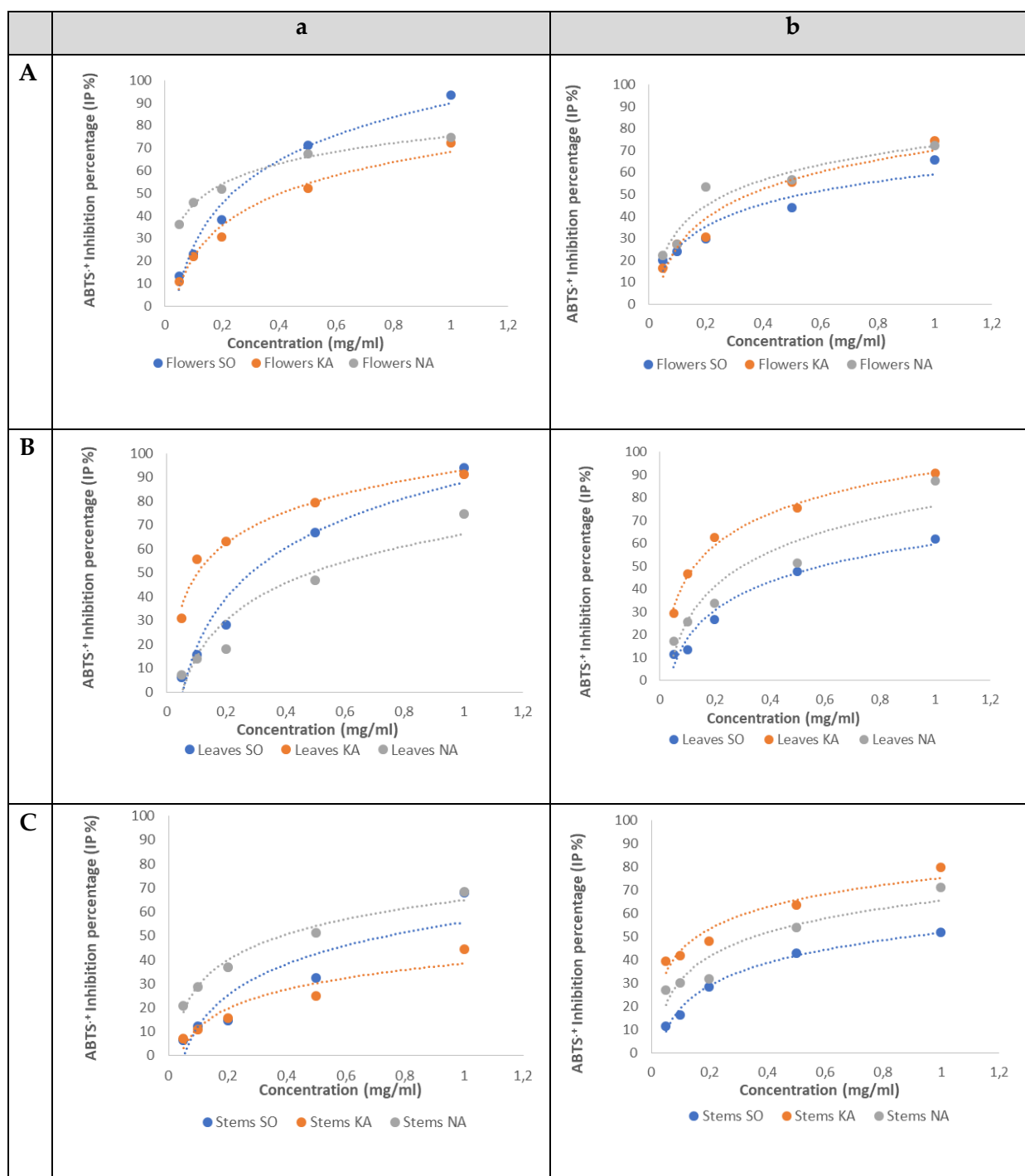


Figure S2. Comparative analysis of antioxidant activity (ABTS⁺) in aqueous extracts of *O. nervosum* ssp. *platylepis* (A: flowers, B: leaves, C: stems) from both spontaneous (a) and cultivated thistle (b).