

Supplementary Figures

Figure S1

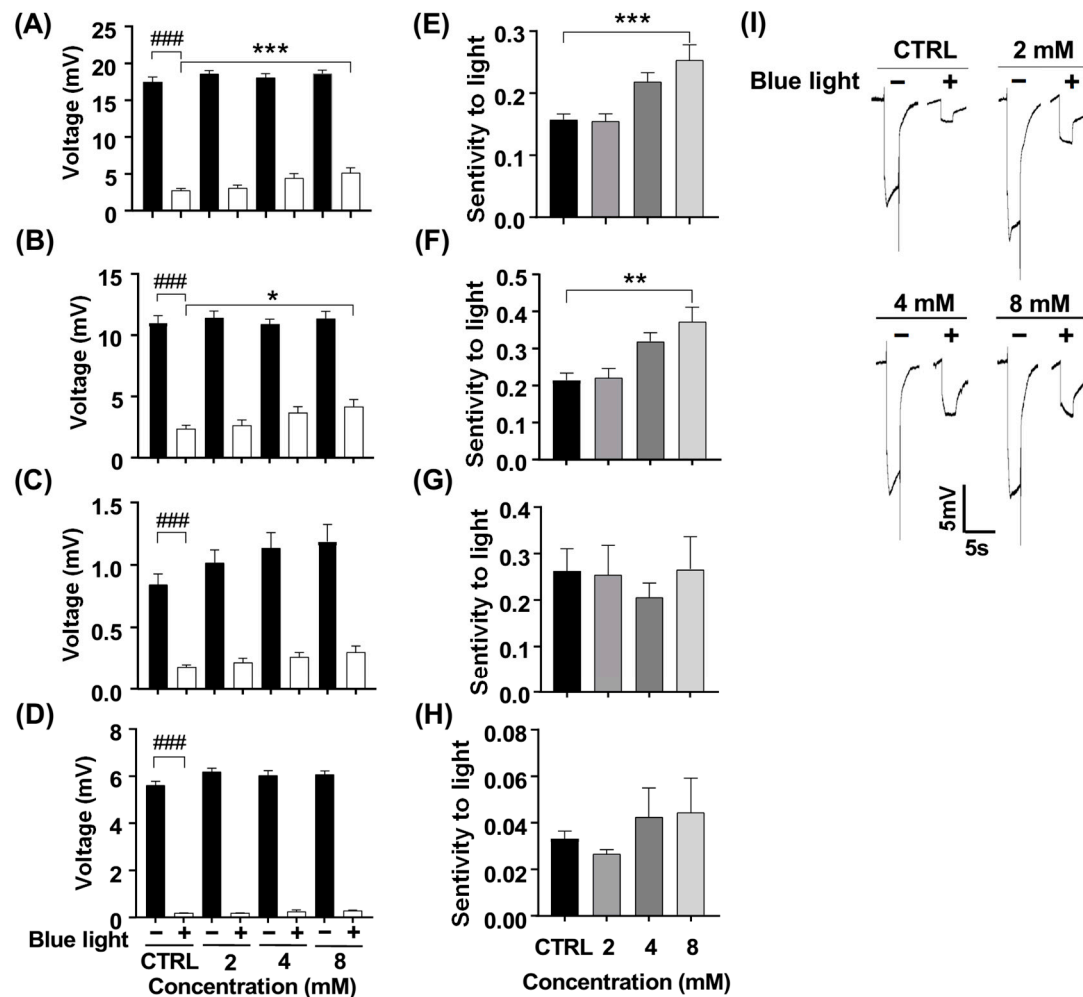


Figure S1. Effect of ALA on blue light-induced retinal damage in fly eyes. Male flies were pretreated with 0, 2, 4, and 8 mM ALA for 10 days. The characteristics of the ERG were recorded by the amplitudes of (A) ΔV , (B) RPA, (C) on-transient, and (D) off-transient. The sensitivity to light of (E) ΔV , (F) RPA, (G) on-transient, and (H) off-transient. (I) The representative ERG signals of the control and treated groups. Data are mean \pm SEM. n = 14-15. ### $p < 0.001$ with vs. without blue light exposure. * $p < 0.05$, ** $p < 0.01$, and *** $p < 0.001$ compared to the control group.

Figure S2

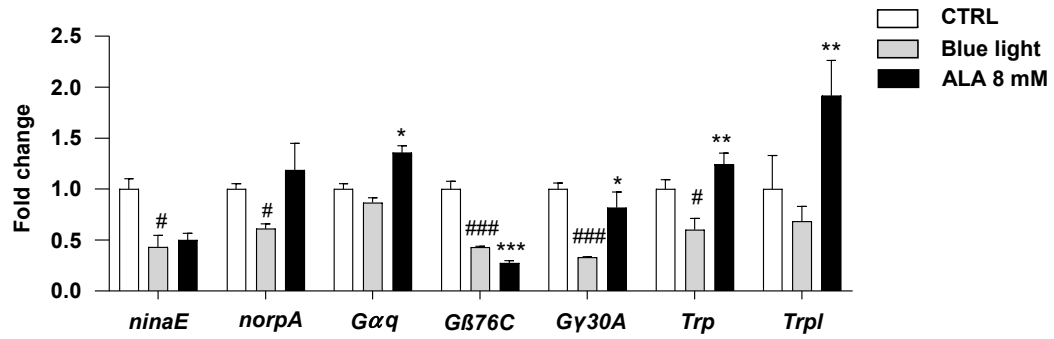


Figure S2. Effect of ALA pretreatment on the gene expression levels of *Drosophila* retina. ALA is a positive control. Data are mean \pm SEM from five independent experiments. # $p < 0.05$, ### $p < 0.001$ compared to the control group. * $p < 0.05$, ** $p < 0.01$, *** $p < 0.001$ compared to blue light treatment only.