

Table S1. Characteristics of surveys reported.

Reference	Study design	Year	Sample	Age (yrs)	Region	Rhinitis Prevalence	Level of evidence
Anthracopoulos et al. [11]	Cross-sectional	1991	2417	8-10	Patra, S	2.1%	III
Malliori et al. [12]	Cross-sectional	1991	2417	8-10	Patra, S	2.1%	III
Anthracopoulos et al. [11]	Cross-sectional	1998	3076	8-10	Patra, S	3.4%	III
Malliori et al. [12]	Cross-sectional	1998	3076	8-10	Patra, S	3.4%	III
Papadopoulou et al. [15, 16]	Cross-sectional	2000	1000	9-10	Athens, C	5.2%	III
Papadopoulou et al. [15, 16]	Cross-sectional	2000	1023	9-10	Thessaloniki, N	8.2%	III
Sichletidis et al. [14]	Cross-sectional	2001	2005	9-12	Thessaloniki, N	12.6%	III
Anthracopoulos et al. [11]	Cross-sectional	2003	2725	8-10	Patra, S	4.6%	III
Malliori et al. [12]	Cross-sectional	2003	2725	8-10	Patra, S	4.6%	III
Malliori et al. [12]	Cross-sectional	2008	2688	8-10	Patra, S	5.1%	III
Malliori et al. [12]	Cross-sectional	2013	2554	8-10	Patra, S	4.4%	III
Katotomichelakis et al. [13]	Cross-sectional	2016	843	6-17	Evros prefecture, N	34.2%	III
Siguardardottir et al. [10]	Cohort	2017	517	6-10	Athens, C	5.8%	II
Antonogeorgos et al. [17]	Cross-sectional	2020	1934	12-14	Athens, C	25.3%	III

Abbreviations: W, West, N, North, S, South, E, East, C, Central

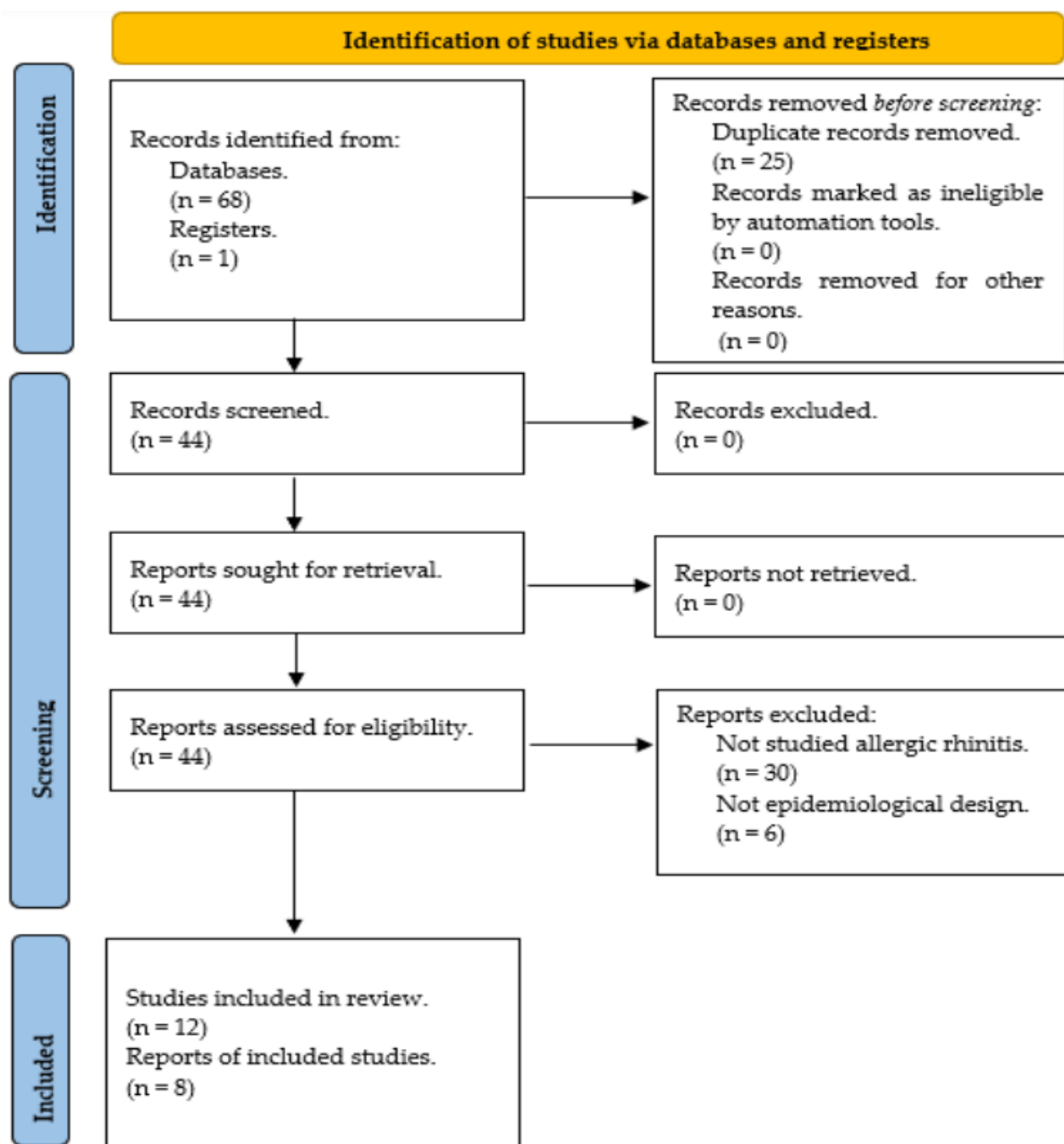


Figure S1. Flow chart of the selection process.