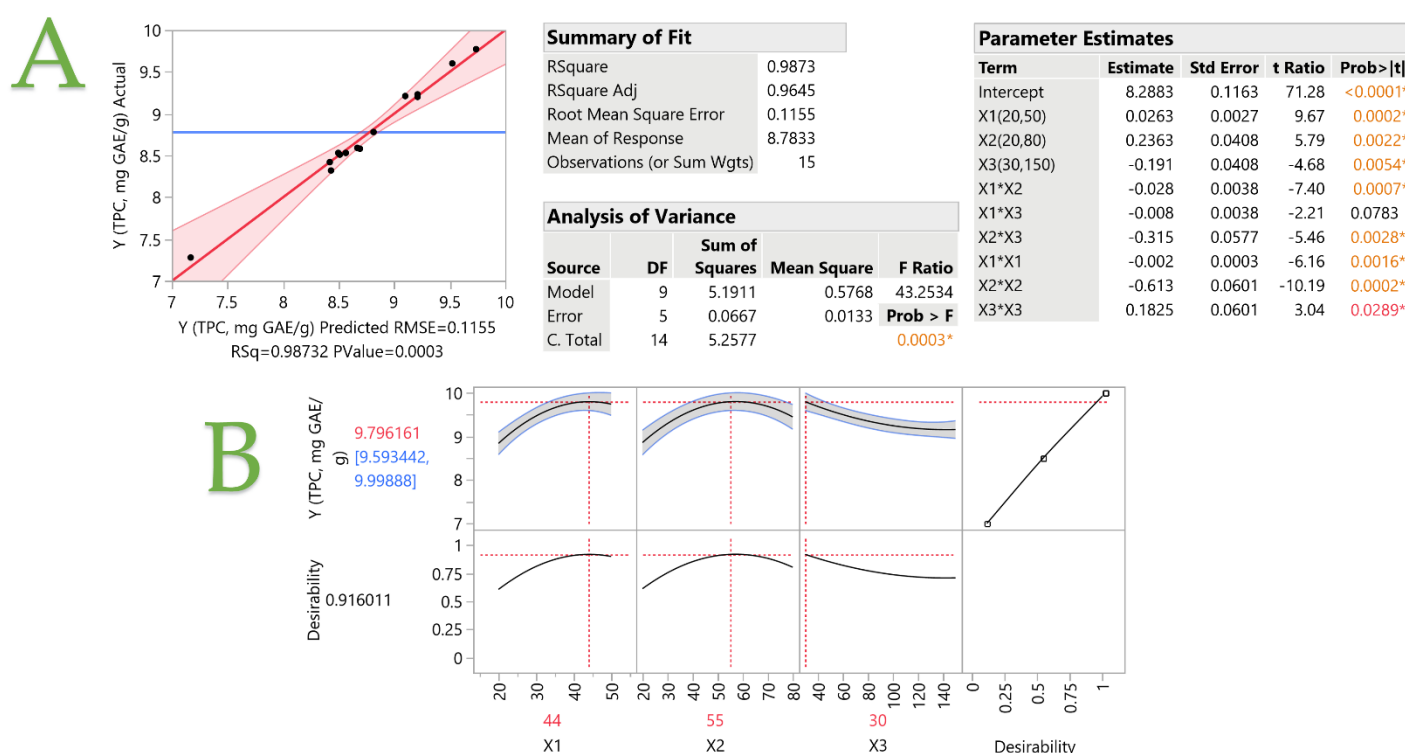


# Bioactive Compound Extraction of Hemp (*Cannabis sativa* L.) Leaves through Response Surface Methodology Optimization

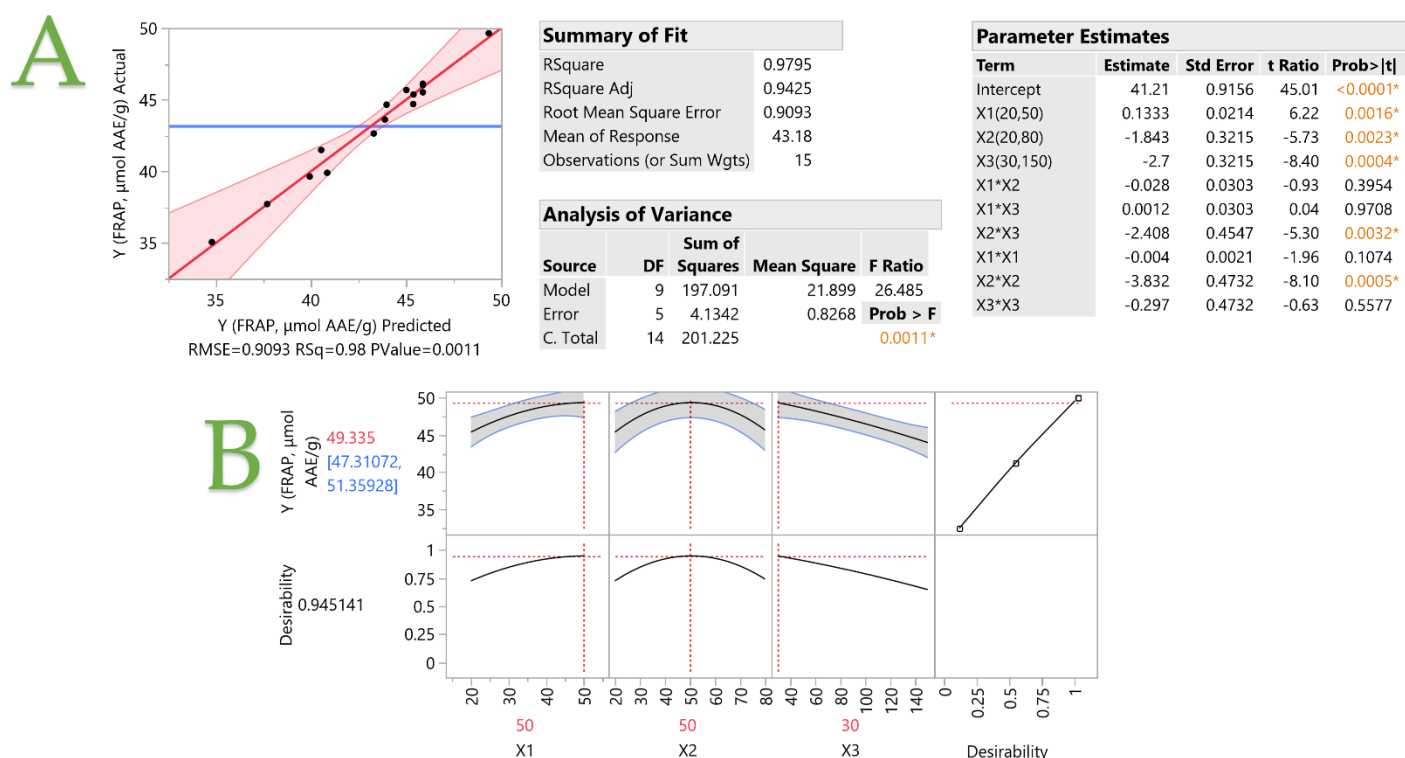
Theodoros Chatzimitakos, Vassilis Athanasiadis \*, Ioannis Makrygiannis, Dimitrios Kalompatsios, Eleni Bozinou and Stavros I. Lalas

Department of Food Science and Nutrition, University of Thessaly, Terma N. Temponera Str., 43100 Karditsa, Greece; tchatzimitakos@uth.gr (T.C.); ioanmakr1@uth.gr (I.M.); dkalompatsios@uth.gr (D.K.); empozinou@uth.gr (E.B.); slalas@uth.gr (S.I.L.)

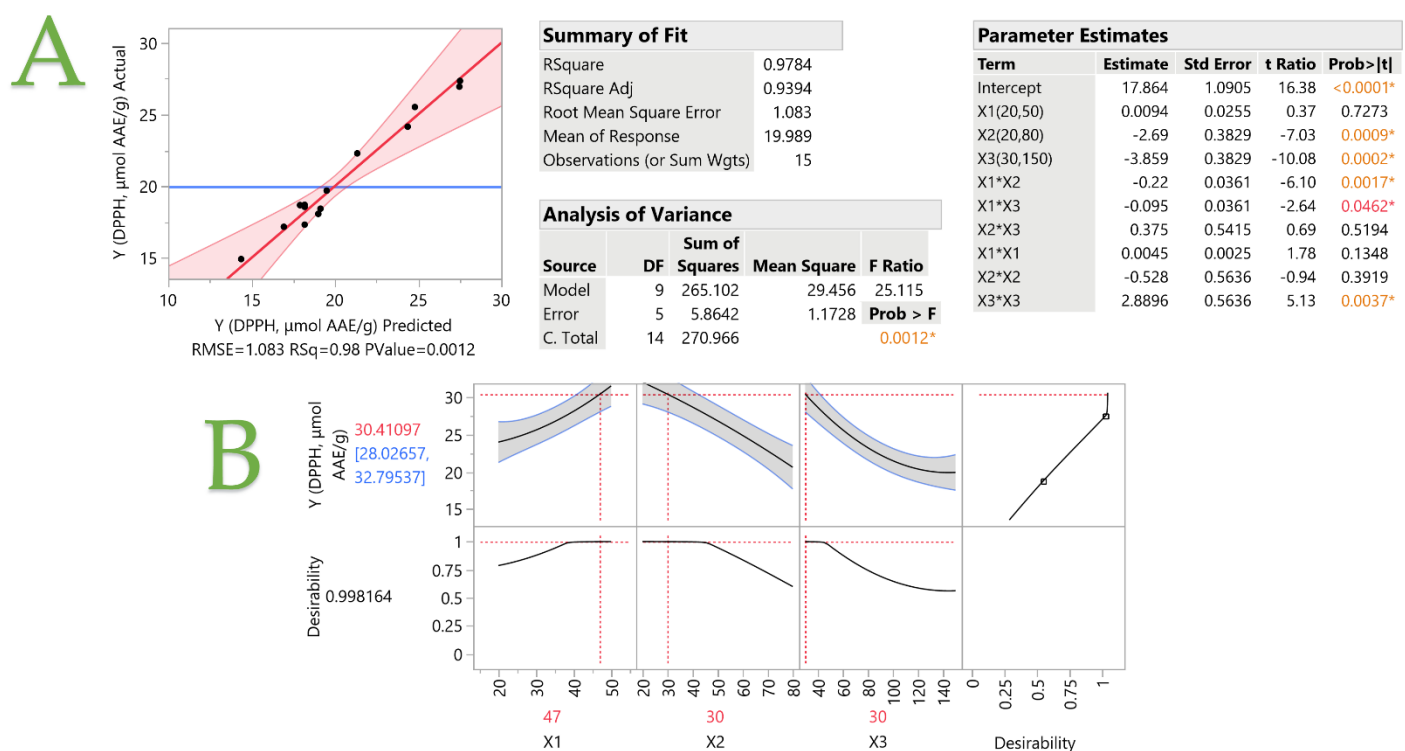
\* Correspondence: vaathanasiadis@uth.gr; Tel.: +30-24410-64783



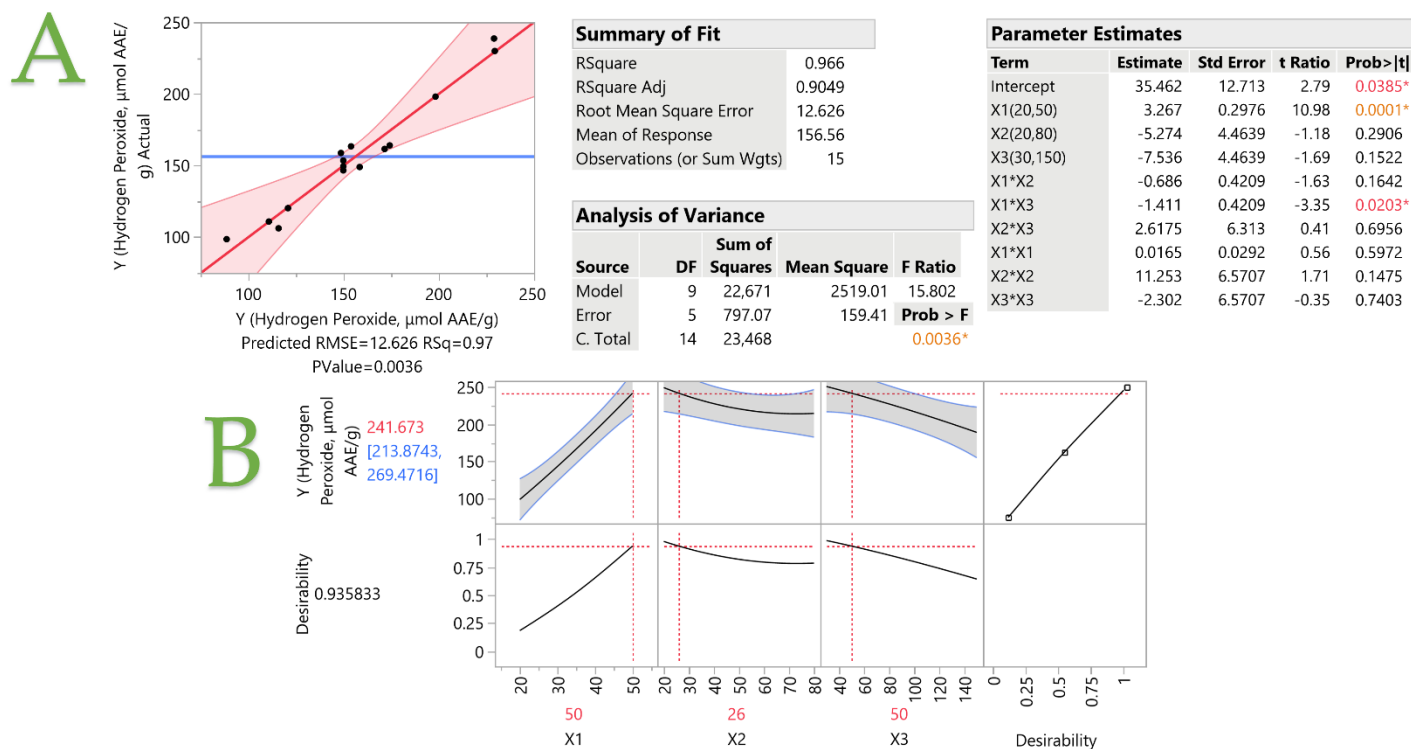
**Figure S1.** Plots **A** and **B** display the actual response versus the predicted response (Total polyphenol content – TPC, mg GAE/g) for the optimization of *C. sativa* extracts carried out with water solutions, different extraction parameters, and the desirability function. Asterisks and colored values denote statistically significant values, while inset tables include statistics relevant to the evaluation of the resulting model.



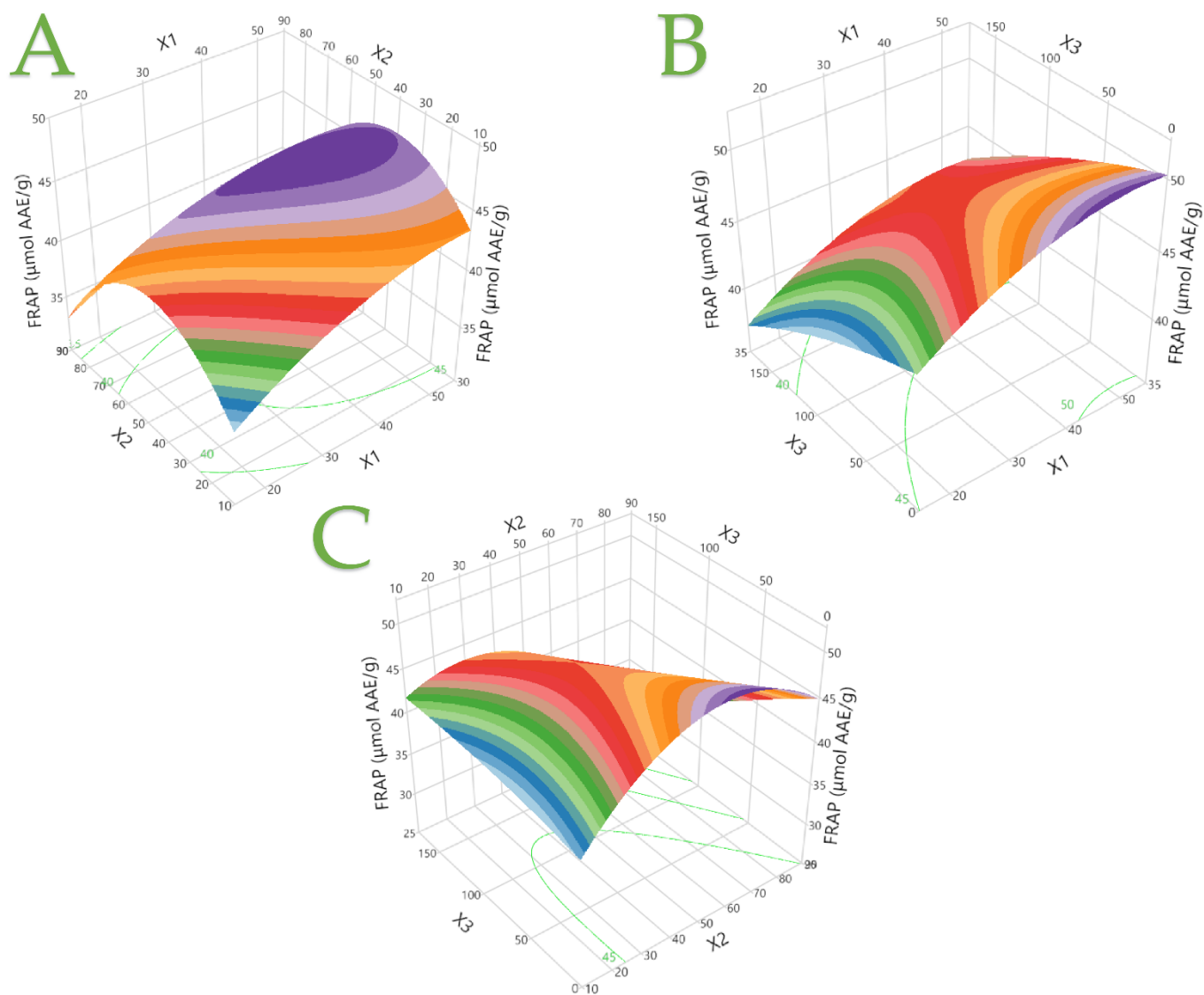
**Figure S2.** Plots A and B display the actual response versus the predicted response (FRAP,  $\mu\text{mol AAE/g}$ ) for the optimization of *C. sativa* extracts carried out with water solutions, different extraction parameters, and the desirability function. Asterisks and colored values denote statistically significant values, while inset tables include statistics relevant to the evaluation of the resulting model.



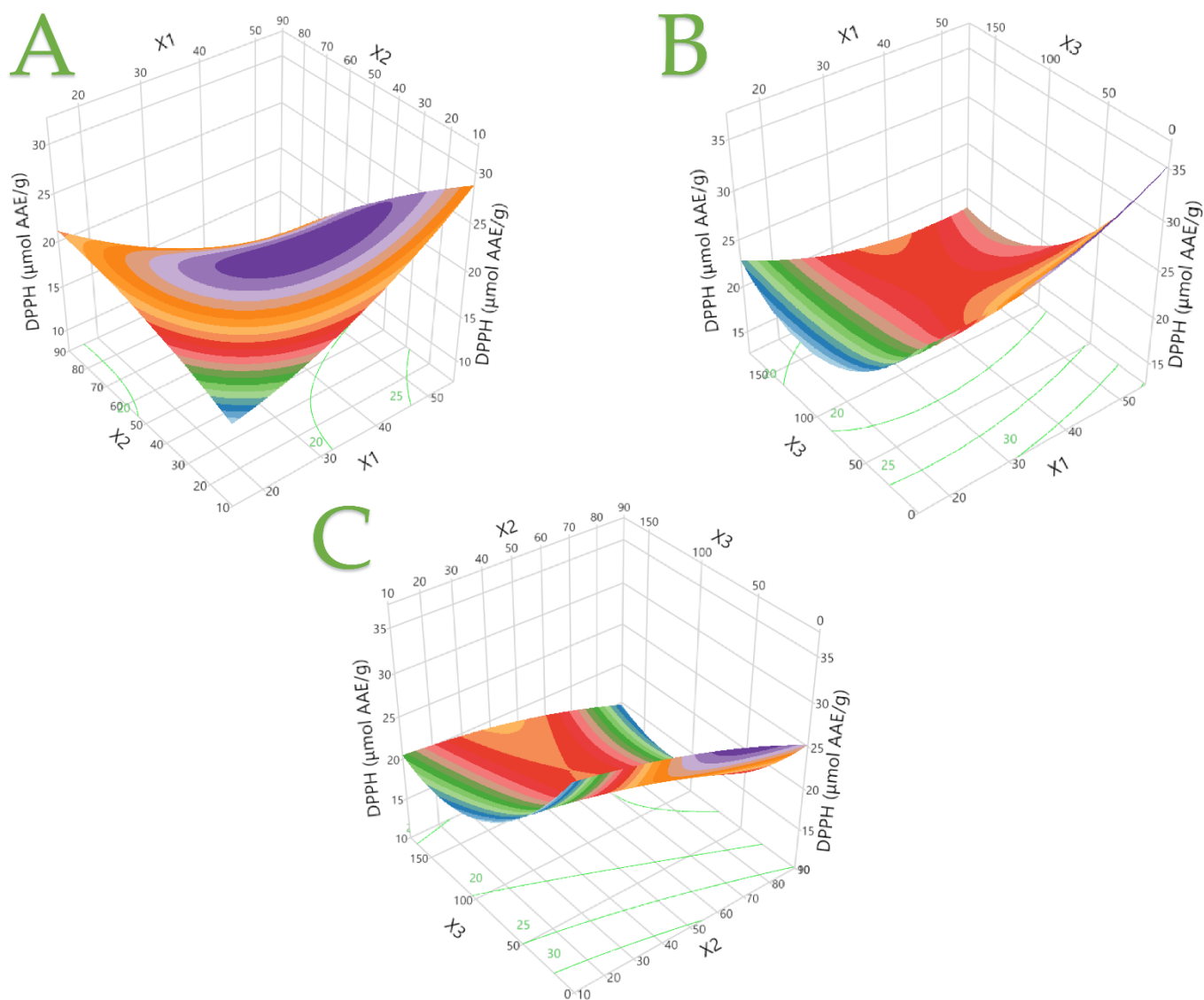
**Figure S3.** Plots A and B display the actual response versus the predicted response (DPPH,  $\mu\text{mol AAE/g}$ ) for the optimization of *C. sativa* extracts carried out with water solutions, different extraction parameters, and the desirability function. Asterisks and colored values denote statistically significant values, while inset tables include statistics relevant to the evaluation of the resulting model.



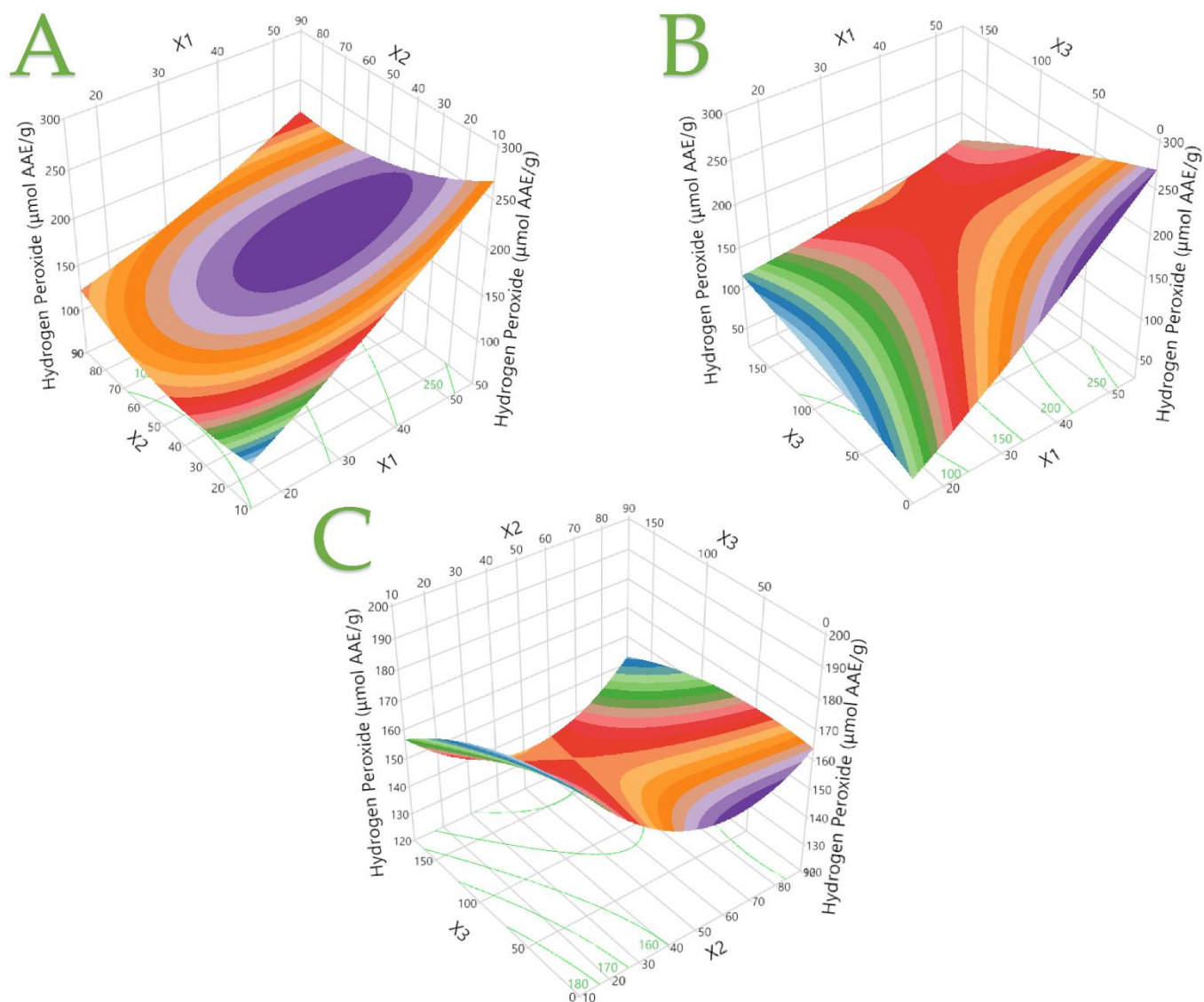
**Figure S4.** Plots **A** and **B** display the actual response versus the predicted response (Hydrogen Peroxide,  $\mu\text{mol AAE/g}$ ) for the optimization of *C. sativa* extracts carried out with water solutions, different extraction parameters, and the desirability function. Asterisks and colored values denote statistically significant values, while inset tables include statistics relevant to the evaluation of the resulting model.



**Figure S5.** The optimal extraction of *C. sativa* extracts is shown in 3D graphs that show the impact of the process variables considered in the response (FRAP,  $\mu\text{mol AAE/g}$ ). Plot (A), covariation of  $X_1$  and  $X_2$ ; plot (B), covariation of  $X_1$  and  $X_3$ ; plot (C), covariation of  $X_2$  and  $X_3$ .



**Figure S6.** The optimal extraction of *C. sativa* extracts is shown in 3D graphs that show the impact of the process variables considered in the response (DPPH,  $\mu\text{mol AAE/g}$ ). Plot (A), covariation of  $X_1$  and  $X_2$ ; plot (B), covariation of  $X_1$  and  $X_3$ ; plot (C), covariation of  $X_2$  and  $X_3$ .



**Figure S7.** The optimal extraction of *C. sativa* extracts is shown in 3D graphs that show the impact of the process variables considered in the response (Hydrogen Peroxide,  $\mu\text{mol AAE/g}$ ). Plot (A), covariation of  $X_1$  and  $X_2$ ; plot (B), covariation of  $X_1$  and  $X_3$ ; plot (C), covariation of  $X_2$  and  $X_3$ .