

Supporting Information

Synthesis of Lasofoxifene, Nafoxidine and Their Positional Isomers via the Novel Three-Component Coupling Reaction

Kenya Nakata, Yoshiyuki Sano and Isamu Shiina *

Department of Applied Chemistry, Faculty of Science, Tokyo University of Science, 1-3 Kagurazaka, Shinjuku-ku, Tokyo 162-8601, Japan

* Author to whom correspondence should be addressed; E-Mail: shiina@rs.kagu.tus.ac.jp;
Fax: +81-3-3260-5609.

Received: 21 August 2010; in revised form: 13 September 2010 / Accepted: 20 September 2010/

Published: 28 September 2010

Supplementary Material

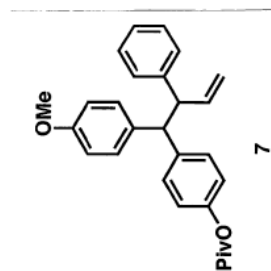
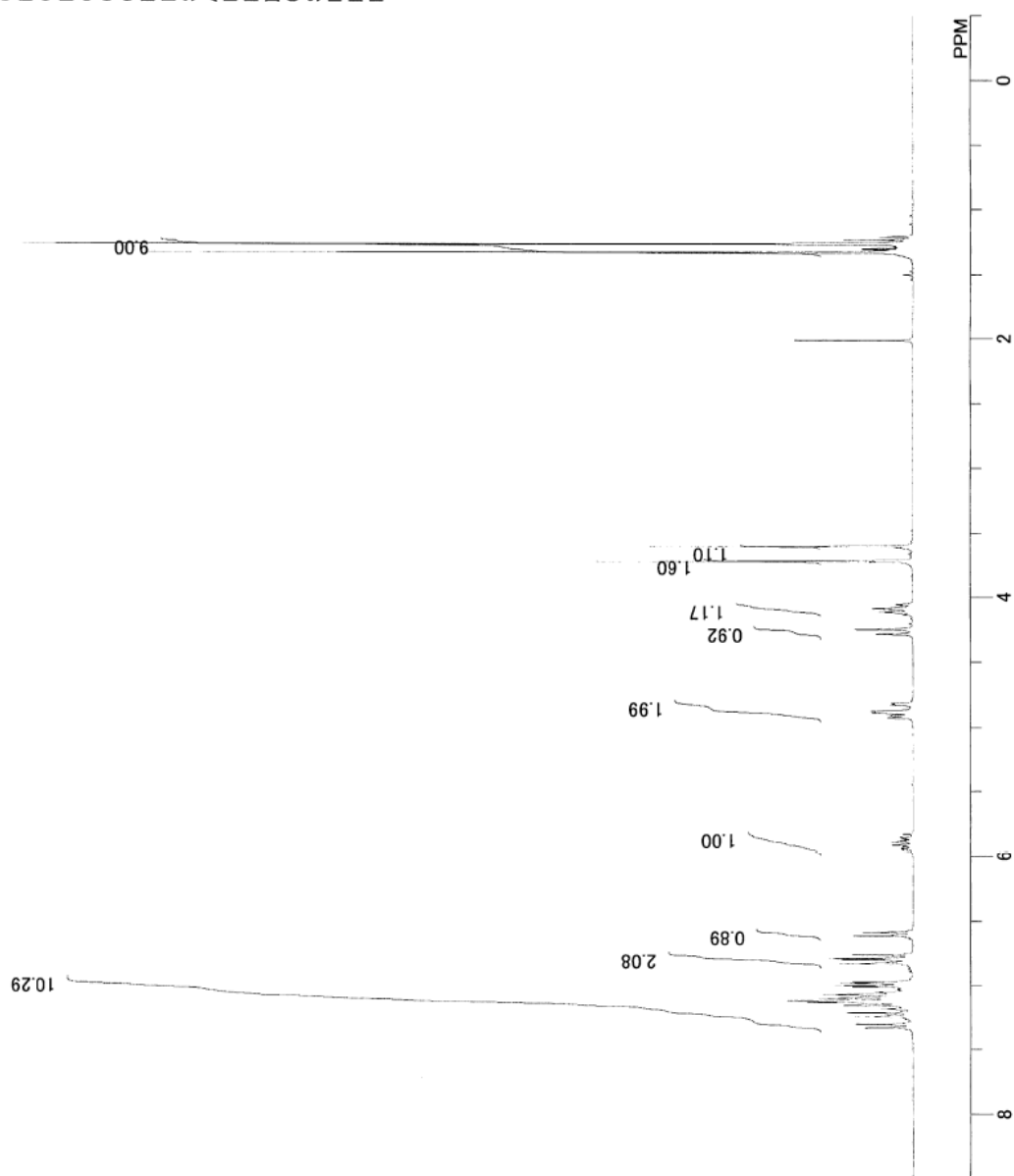
S2-25 ^1H and ^{13}C NMR Spectroscopic Data of Compounds

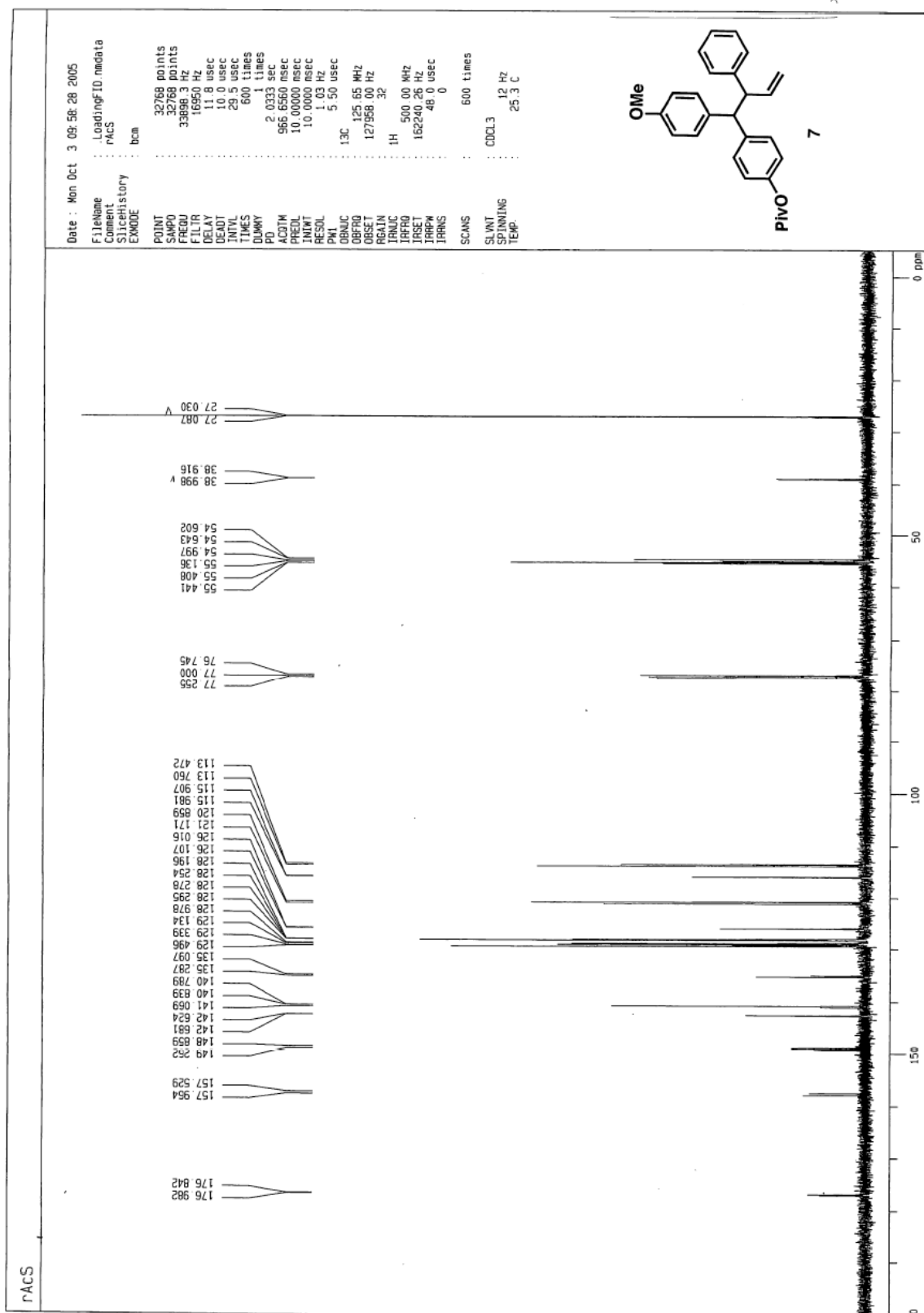
NO.32

DFILE
COMINT
DATIM
OBNUC
EXMOD
OBFRQ
OBSET
OBFIN
POINT
FREQU
SCANS
ACQTM
PD
PW1
IRNUC
CTEMP
SLVNT
EXREF
BF
RGAIN

C:\Documents and Settings\Shina Labi
NO.32
Mon May 28 10:18:31 2007

1H
NON
300.40 MHz
130.00 KHz
1150.00 Hz
32768
6020.40 Hz
8
5.4428 sec
1.5539 sec
5.40 usec
1H
20.9 c
ODCL3
1.26 ppm
0.12 Hz
7

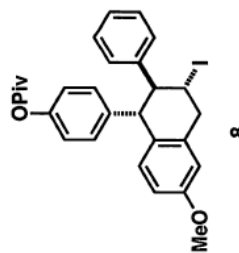
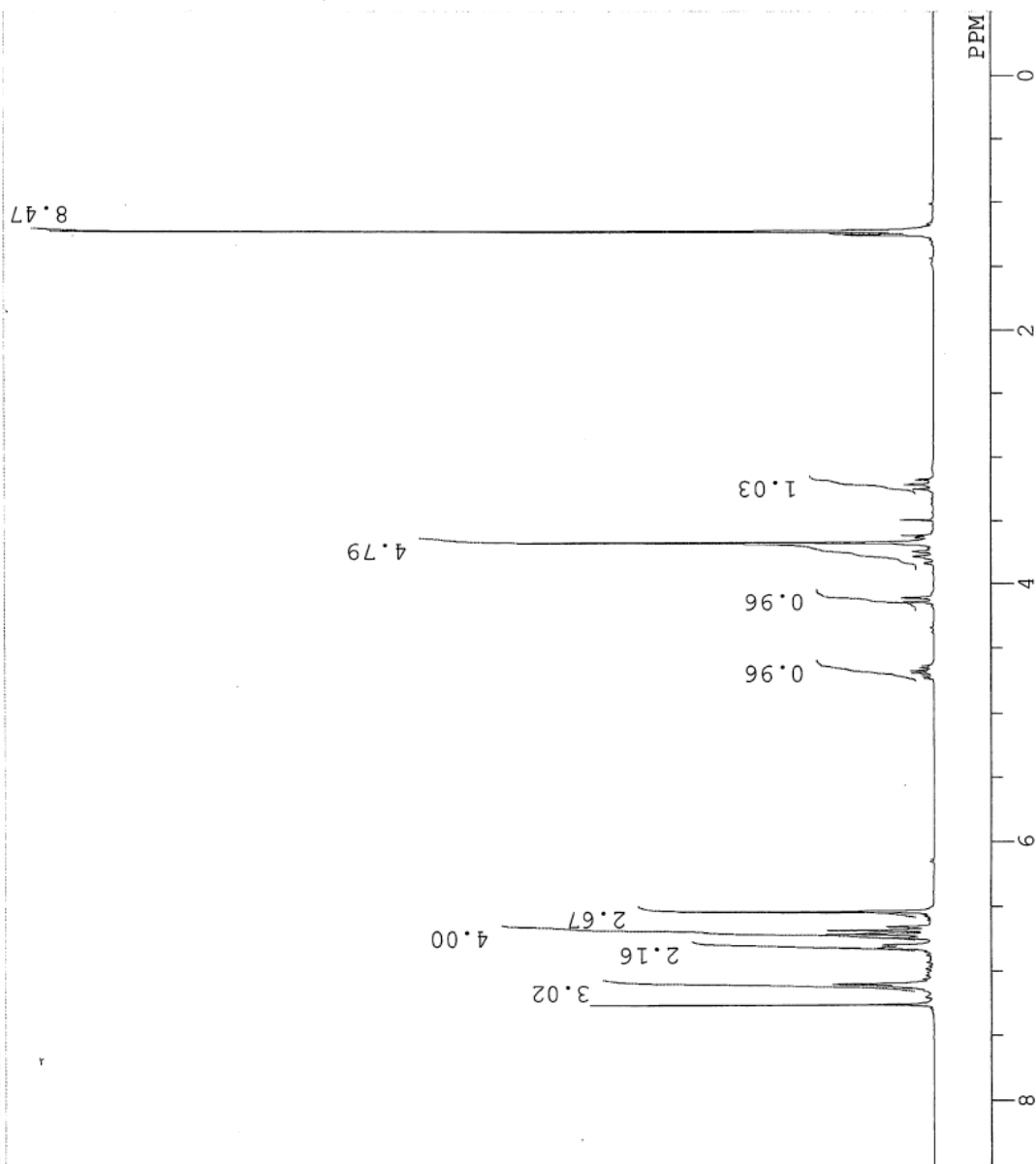


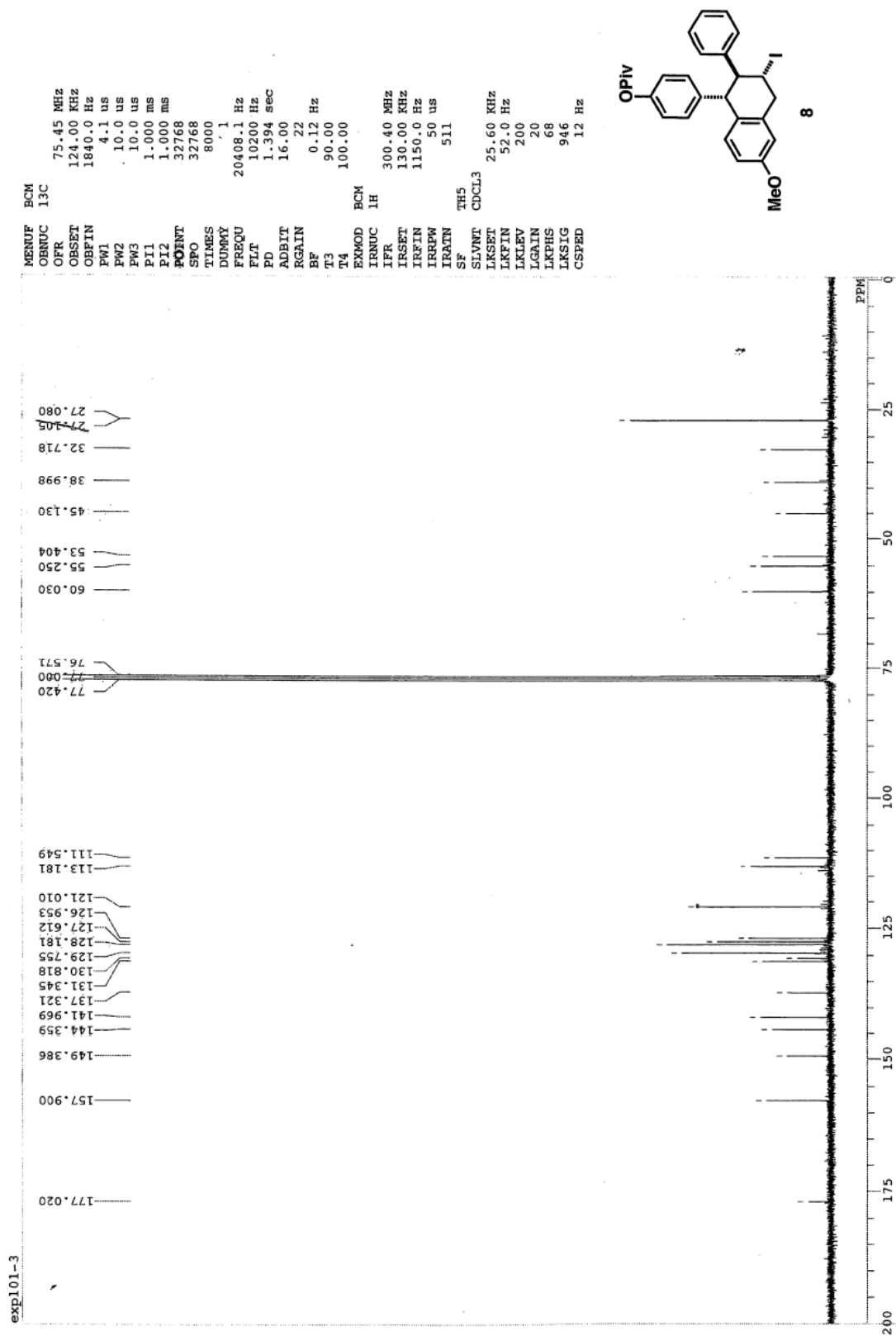


8号用

F:\I2-shita\1H.als
I2-shita

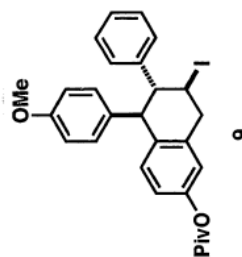
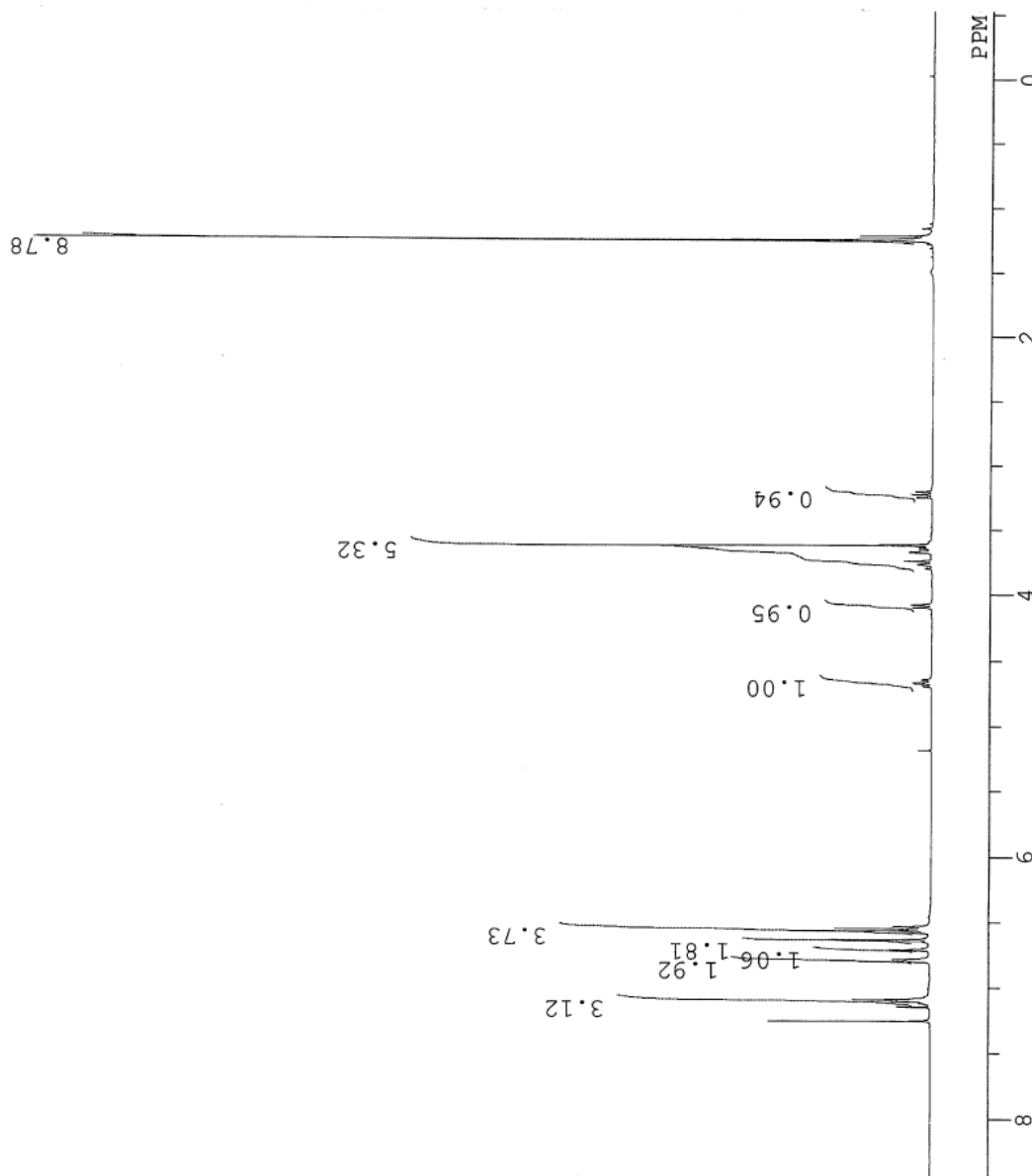
DFILE F:\I2-shita\1H.als
COMNT I2-shita
DATIM Mon Aug 28 22:39:30 2010
OBNUC 1H
EXMOD NON
OBFRQ 300.40 MHz
OBSET 130.00 KHz
OBFIN 1150.00 Hz
POINT 32768
FREQU 6020.40 Hz
SCANS 8
ACQTM 5.4428 sec
PD 1.5539 sec
PW1 5.40 usec
IRNUC 1H
CTEMP 21.9 c
SLVNT CDCL3
EXREF 7.26 ppm
BF 0.12 Hz
RGAIN 10

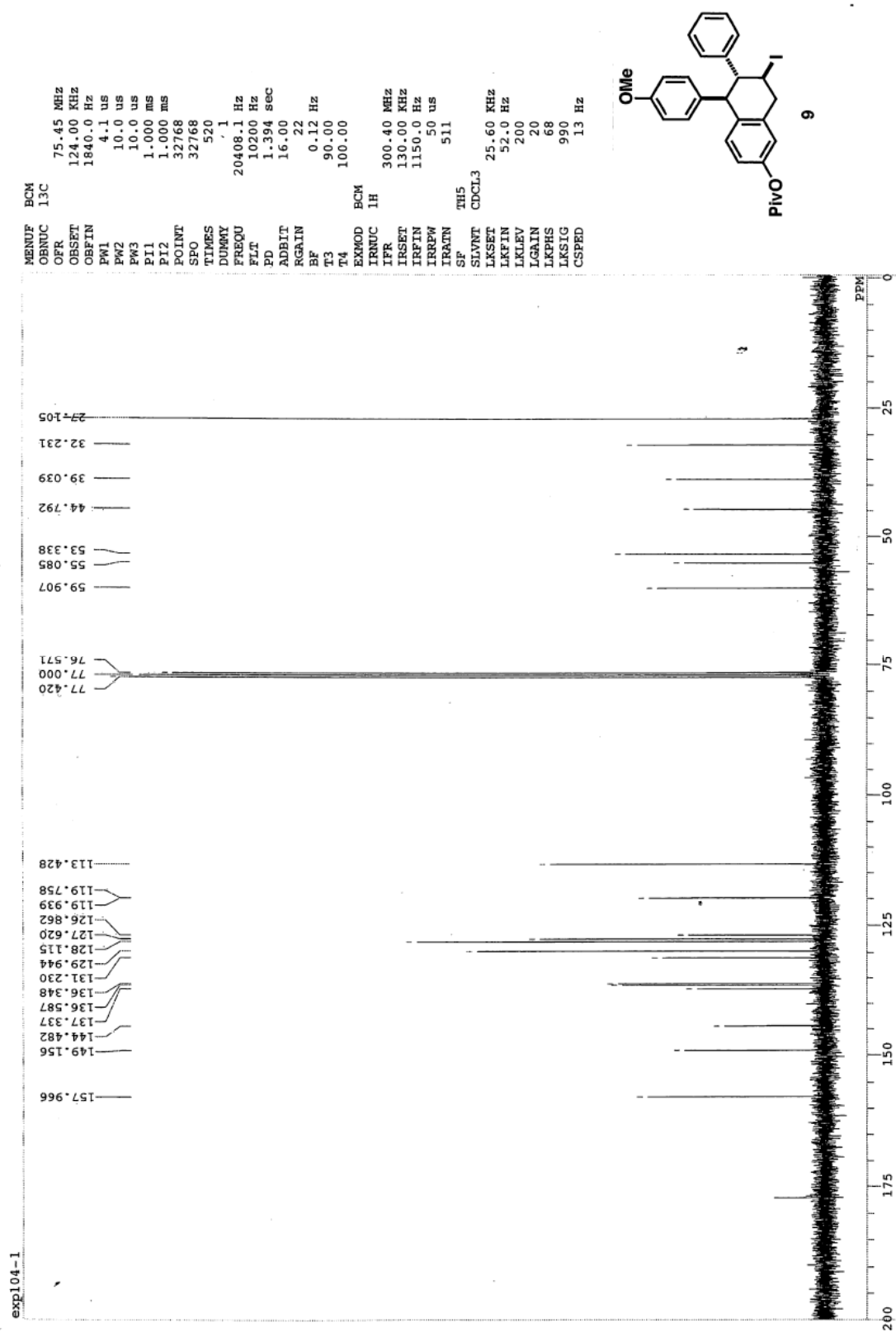


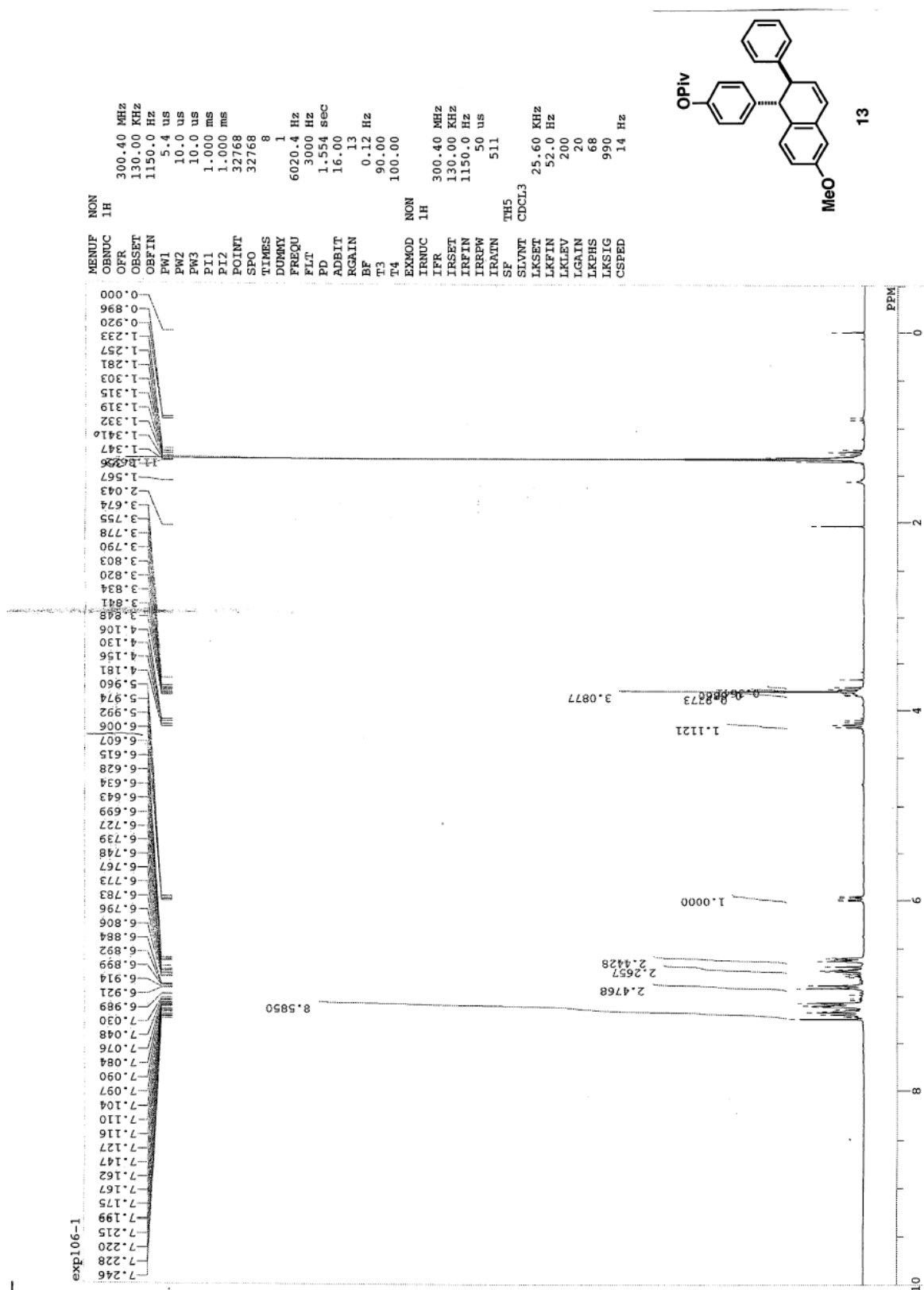


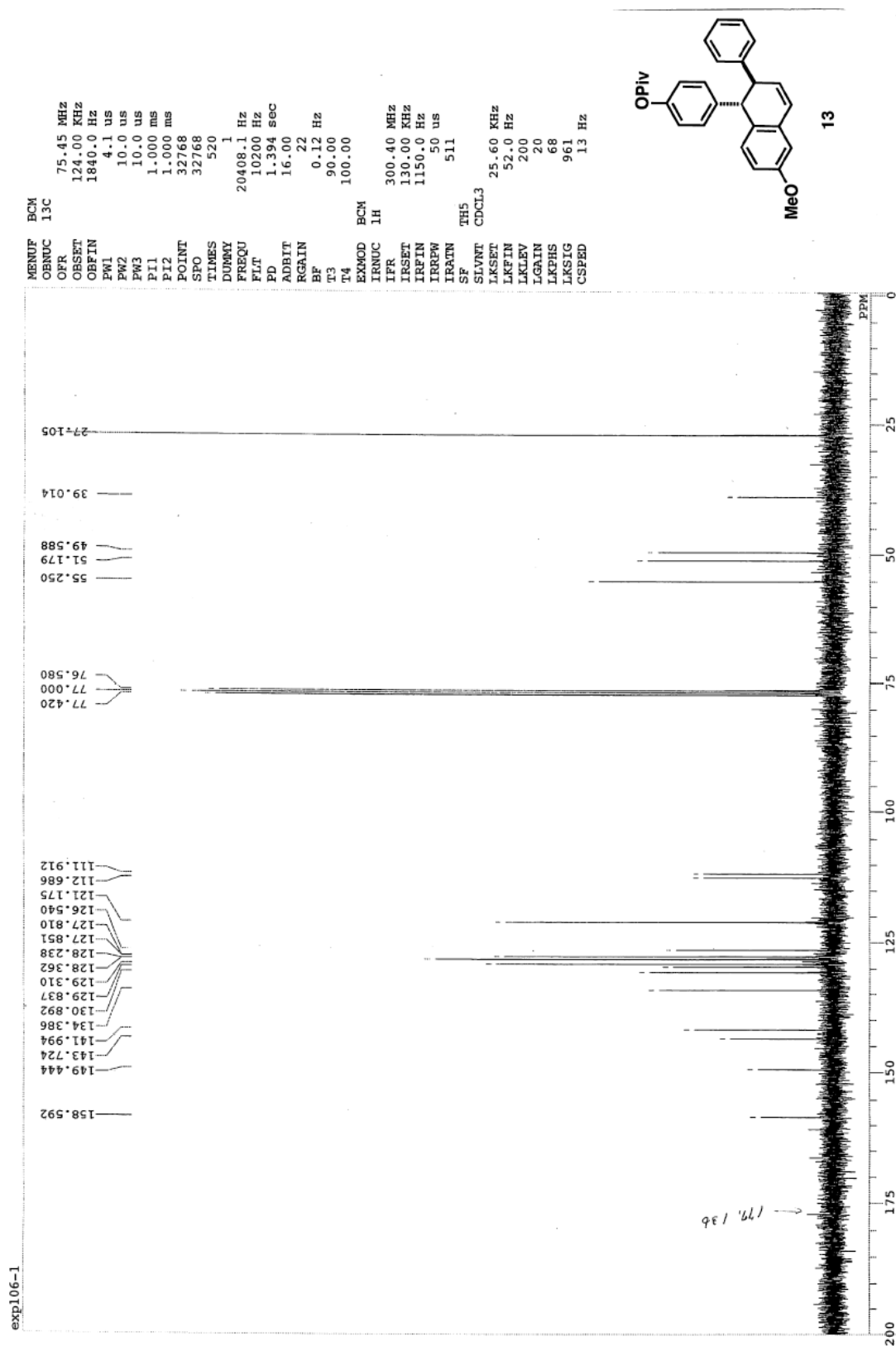
E:\I2-up(data).als
I2-up(data)

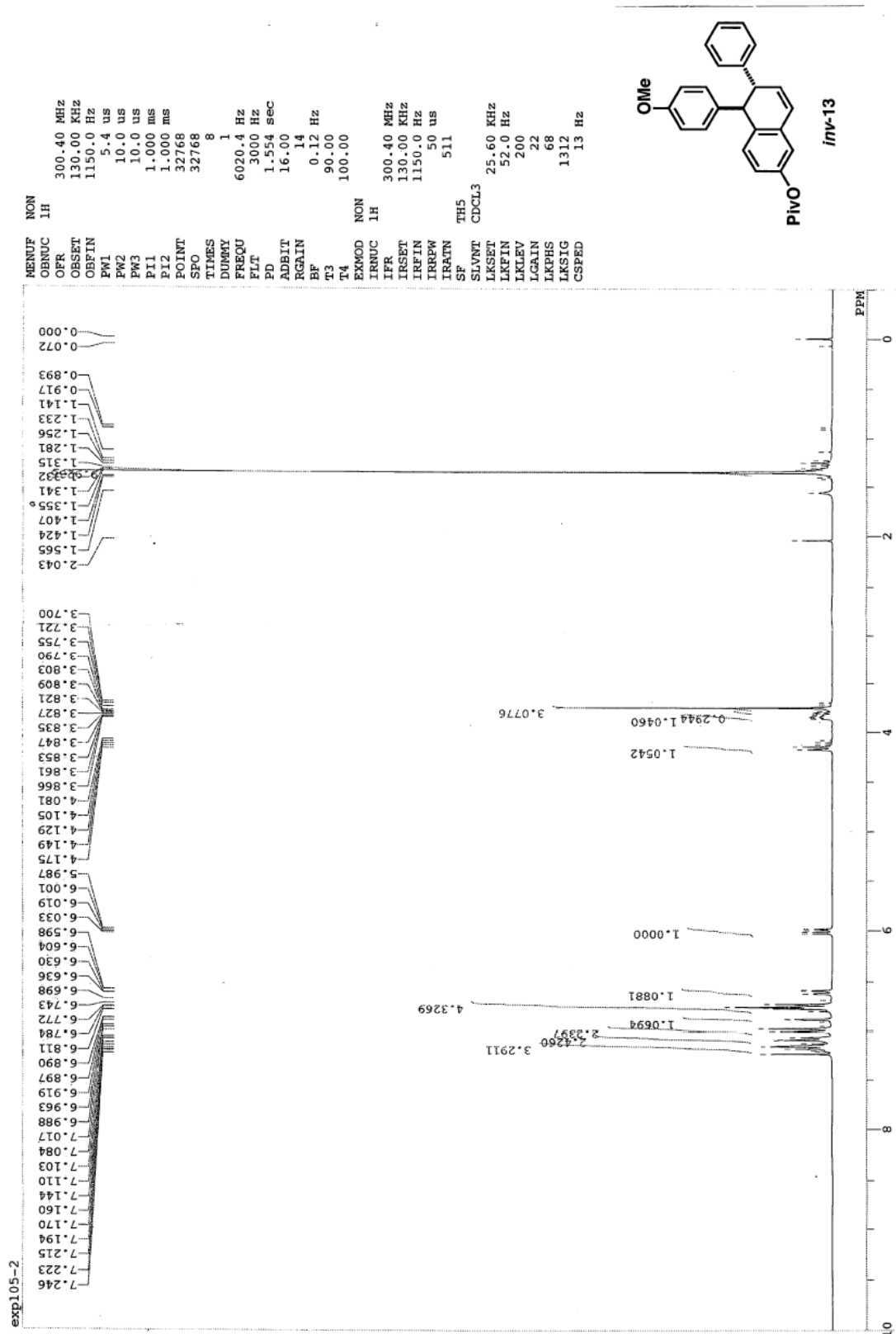
DFILE E:\I2-up(data).als
COMNT I2-up(data)
DATIM Wed Sep 20 21:23:47 20
OBNUC 1H
EXMOD non
OBFRQ 500.00 MHz
OBSET 0.00 KHz
OBFIN 162160.00 Hz
POINT 32768
FREQU 10000.00 Hz
SCANS 8
ACQTM 3.2768 sec
PD 3.7232 sec
PW1 6.15 usec
IRNUC 1H
CTEMP 23.4 C
SIVNT CDCL3
EXREF 7.26 ppm
BF 0.12 Hz
RGAIN 15

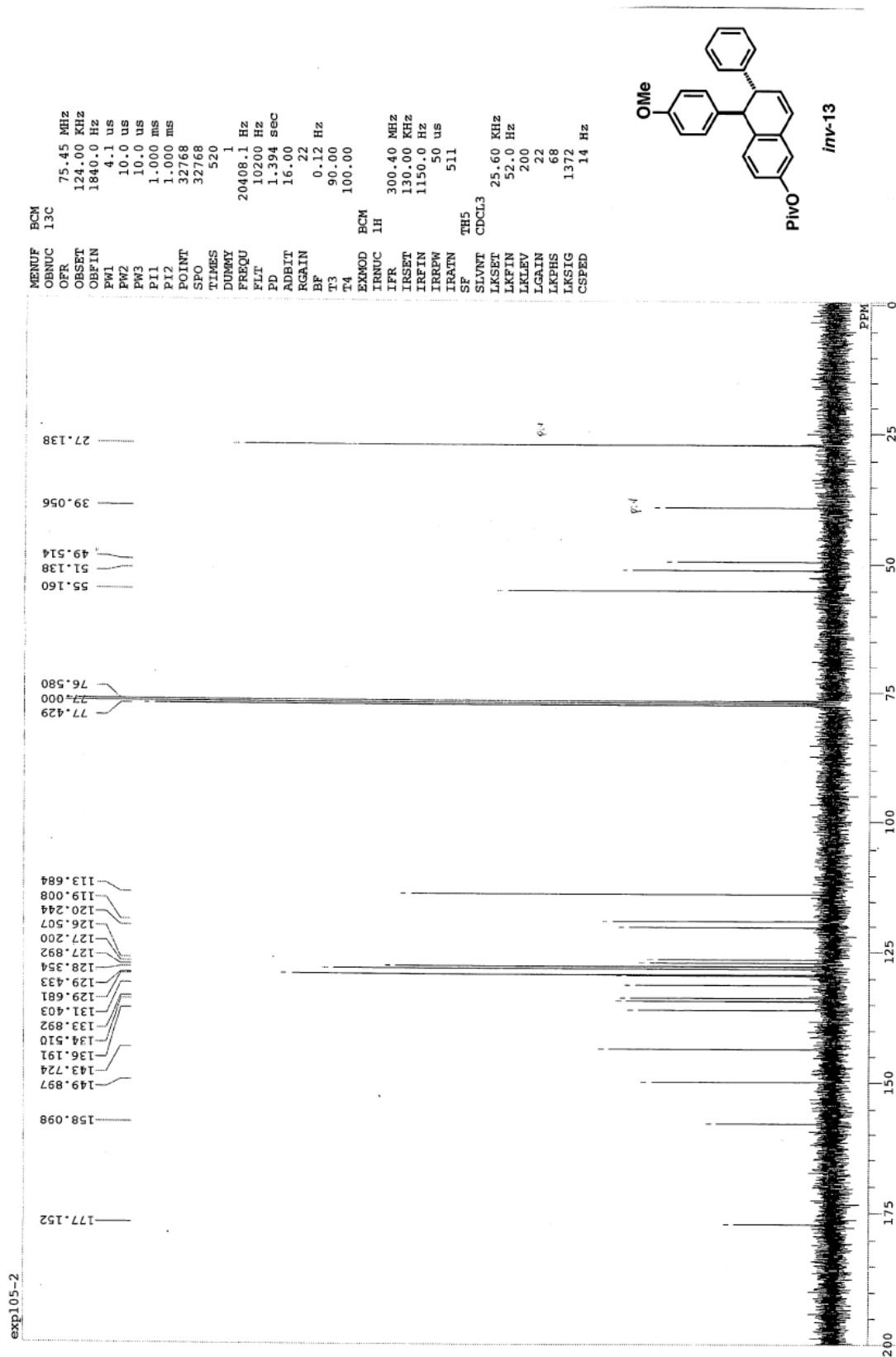






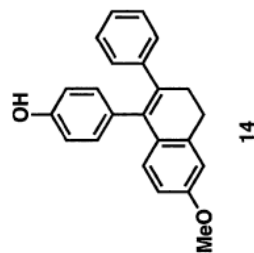
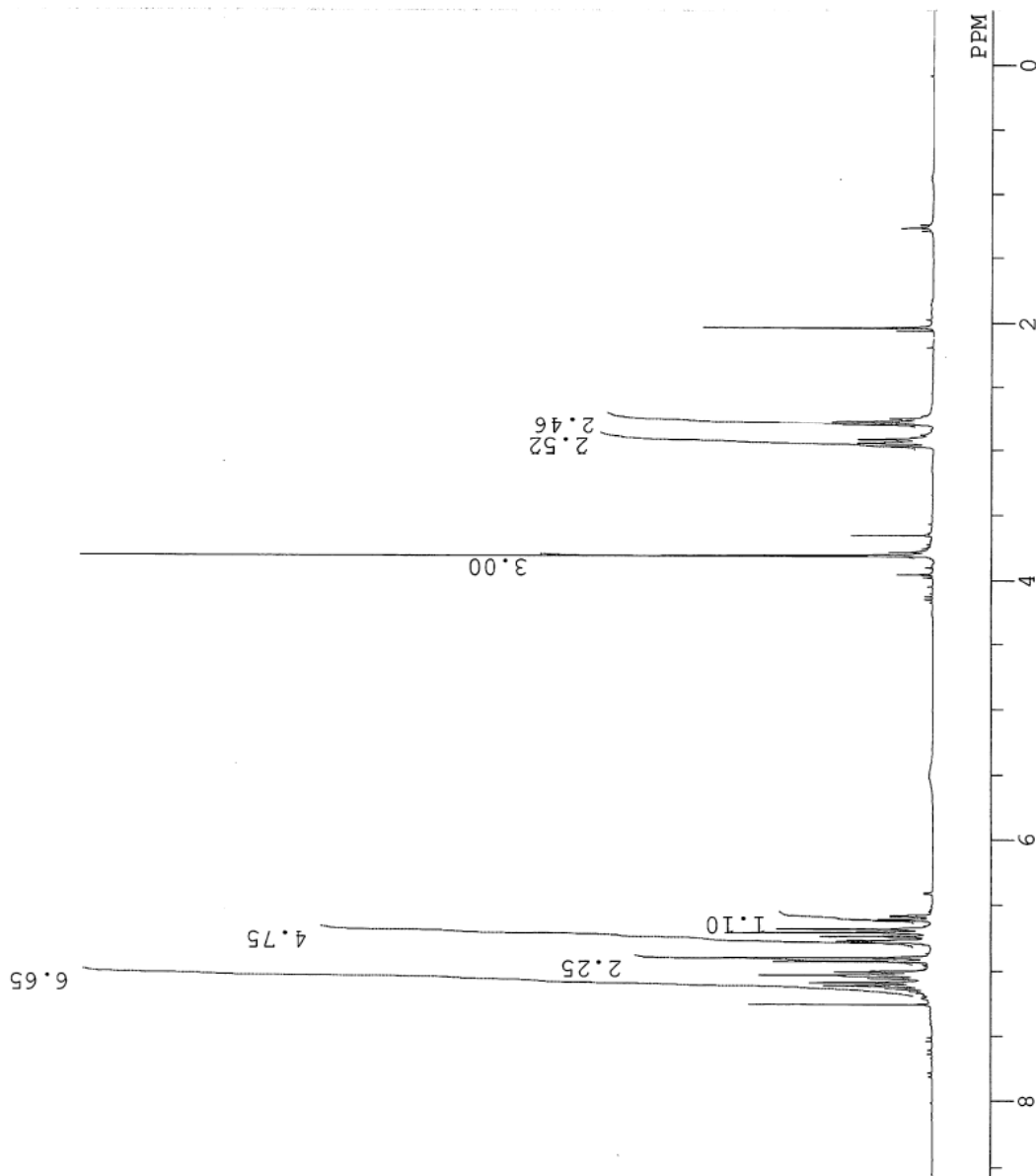


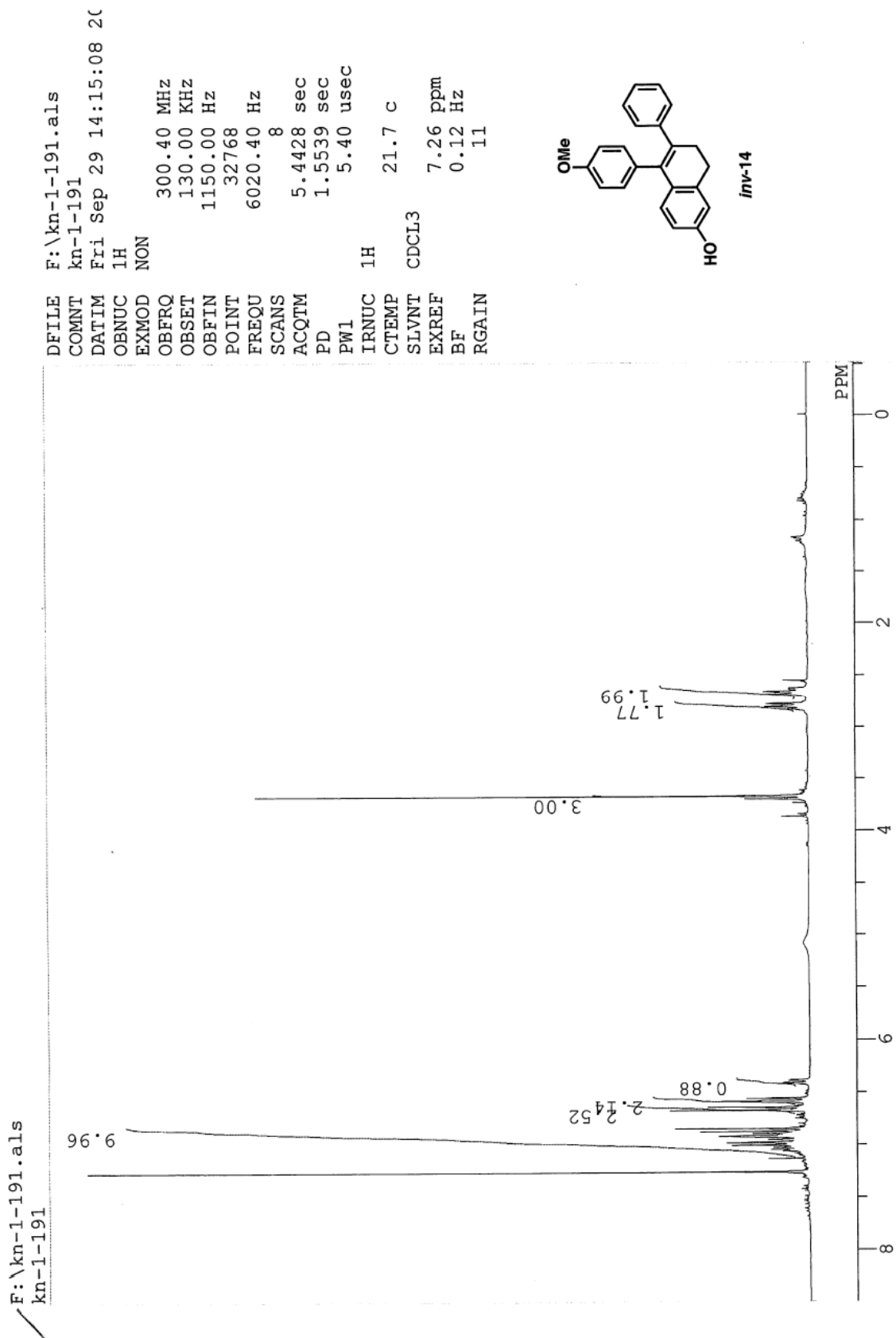




E:\KN-1-175-2.als
JCAMP-DX Data file

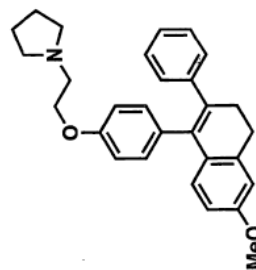
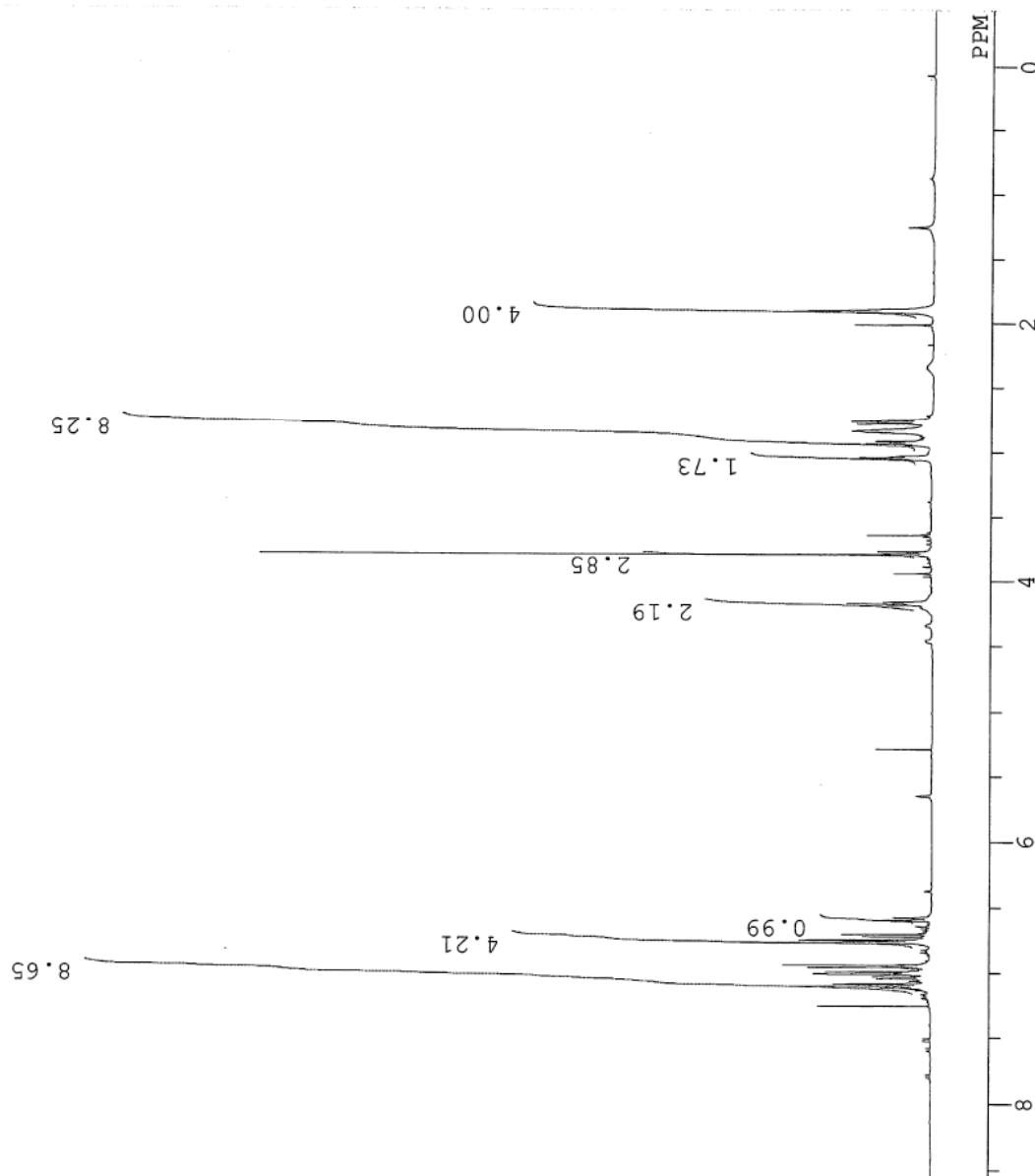
DFILE E:\KN-1-175-2.als
COMNT JCAMP-DX Data file
DATIM 2006/Sep/01 11:14:39
OBNUC 1H
EXMOD ZG30
OBFRQ 300.01 MHz
OBSET 0.00 KHz
OBFIN 1842.92 Hz
POINT 32768
FREQU 6172.84 Hz
SCANS 16
ACQTM 0.0000 sec
PD 0.0000 sec
PW1 11.70 usec
IRNUC OFF
CTEMP 22.9 C
SLVNT CDCL3
EXREF 7.26 ppm
BF 0.25 Hz
RGAIN 228





E:\kn-1-175relH.als
kn-1-175re

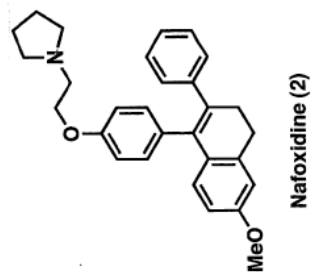
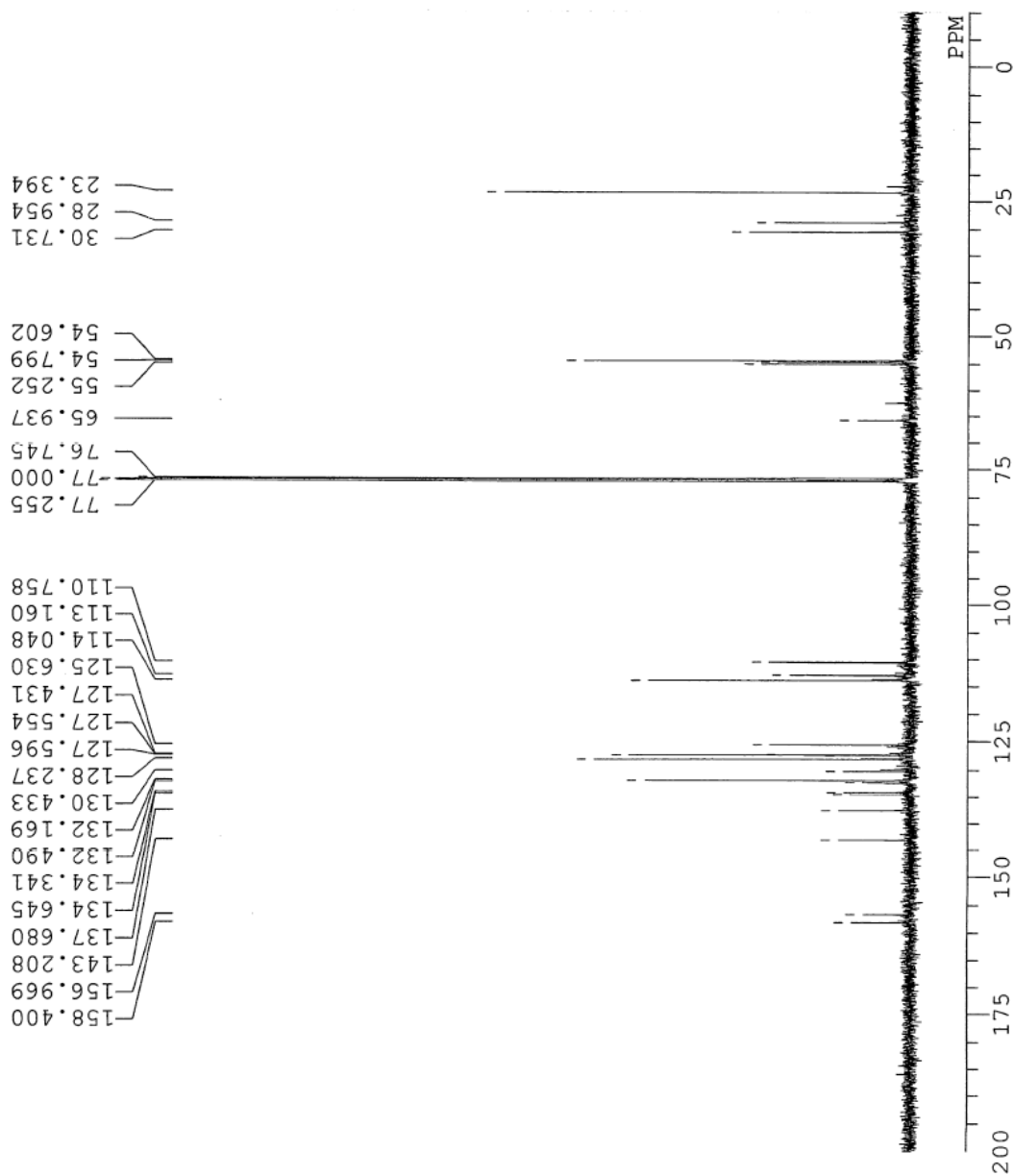
DFILE E:\kn-1-175relH.als
COMNT kn-1-175re
DATIM Wed Sep 20 21:33:11 20
OBNUC 1H
EXMOD non
OBFRQ 500.00 MHz
OBSET 0.00 KHz
OBFIN 162160.00 Hz
POINT 32768
FREQU 10000.00 Hz
SCANS 8
ACQTM 3.2768 sec
PD 3.7232 sec
PW1 6.15 usec
IRNUC 1H
CTEMP 23.8 c
SLVNT CDCL3
EXREF 7.26 ppm
BF 0.12 Hz
RGAIN 16



Nafoxidine (2)

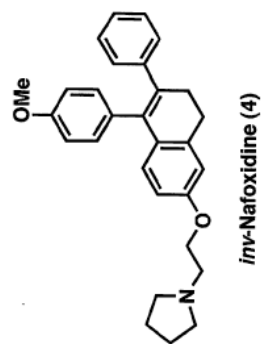
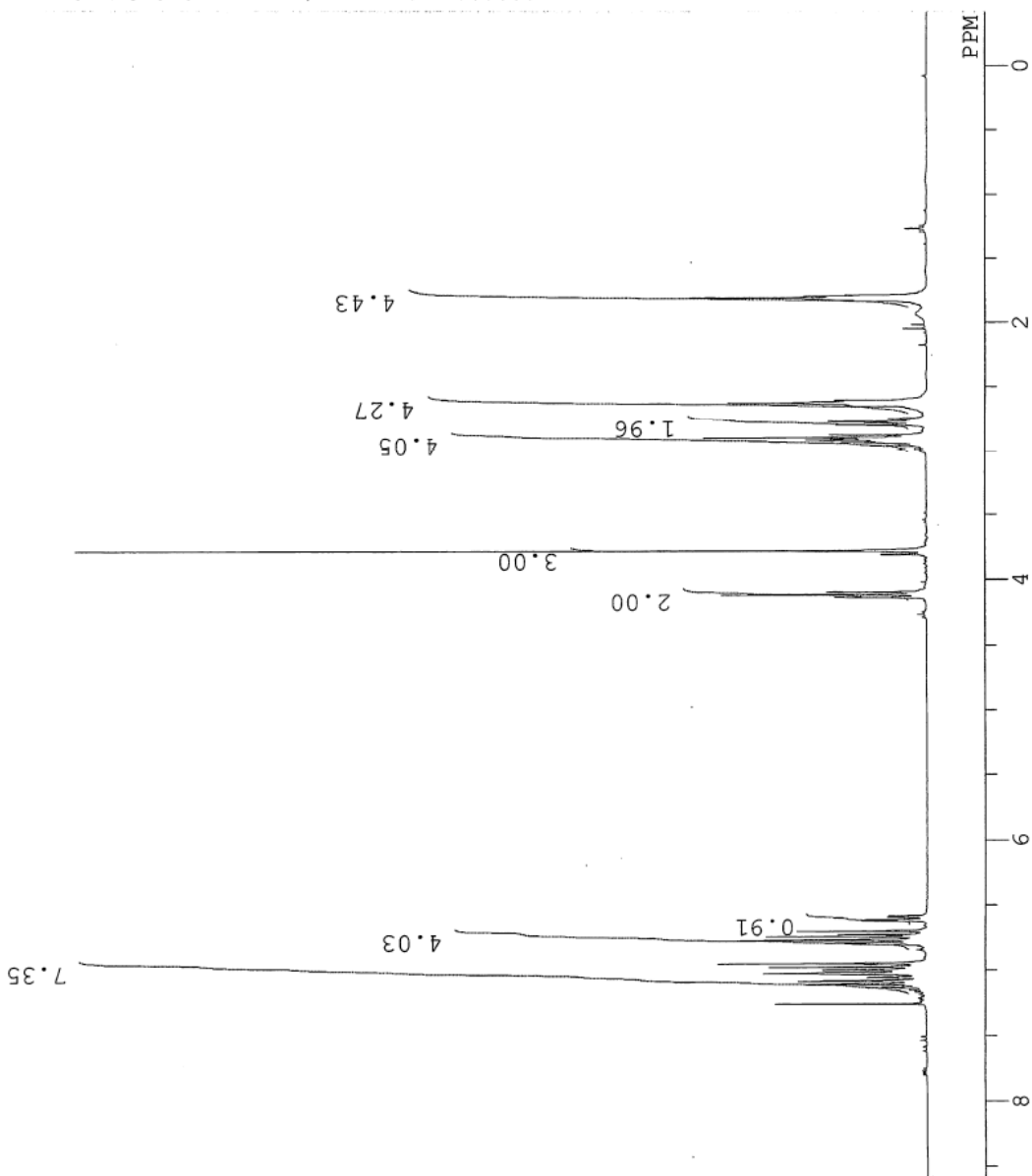
E:\kn-1-175rel13C.als
kn-1-175re

DFILE E:\kn-1-175rel13C.als
COMNT kn-1-175re
DATIM Wed Sep 20 22:23:30 2010
OBNUC 13C
EXMOD bcm
OBFRQ 125.65 MHz
OBSET 0.00 KHz
OBFIN 127958.00 Hz
POINT 32768
FREQU 33898.30 Hz
SCANS 1000
ACQTM 0.9667 sec
PD 2.0333 sec
PW1 5.10 usec
IRNUC 1H
CTEMP 25.8 c
SLVNT CDCL3
EXREF 77.00 ppm
BF 1.20 Hz
RGAIN 28



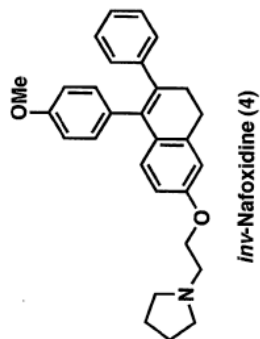
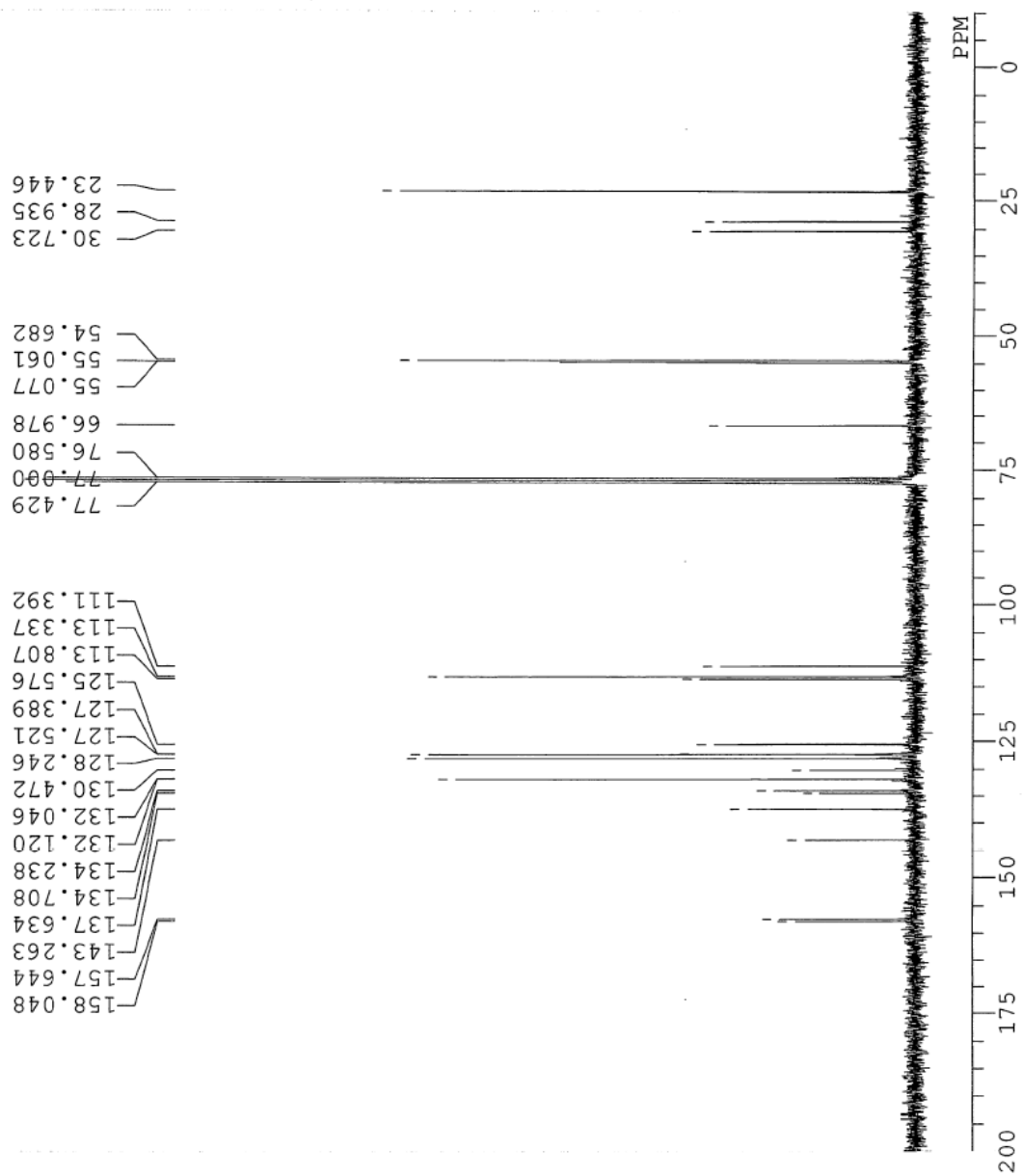
E:\KN-2-163-PURE.als
JCAMP-DX Data file

DFILE E:\KN-2-163-PURE.als
COMNT JCAMP-DX Data file
DATIM 2007/Jan/19 12:38:34
OBNUC 1H
EXMOD ZG30
OBFRQ 300.01 MHz
OBSET 0.00 KHz
OBFIN 1842.92 Hz
POINT 32768
FREQU 6172.84 Hz
SCANS 8
ACQTM 0.0000 sec
PD 0.0000 sec
PW1 11.70 usec
IRNUC OFF
CTEMP 22.9 c
SLVNT CDCL3
EXREF 7.26 ppm
BF 0.25 Hz
RGAIN 228



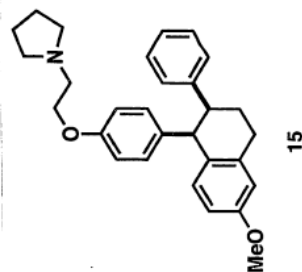
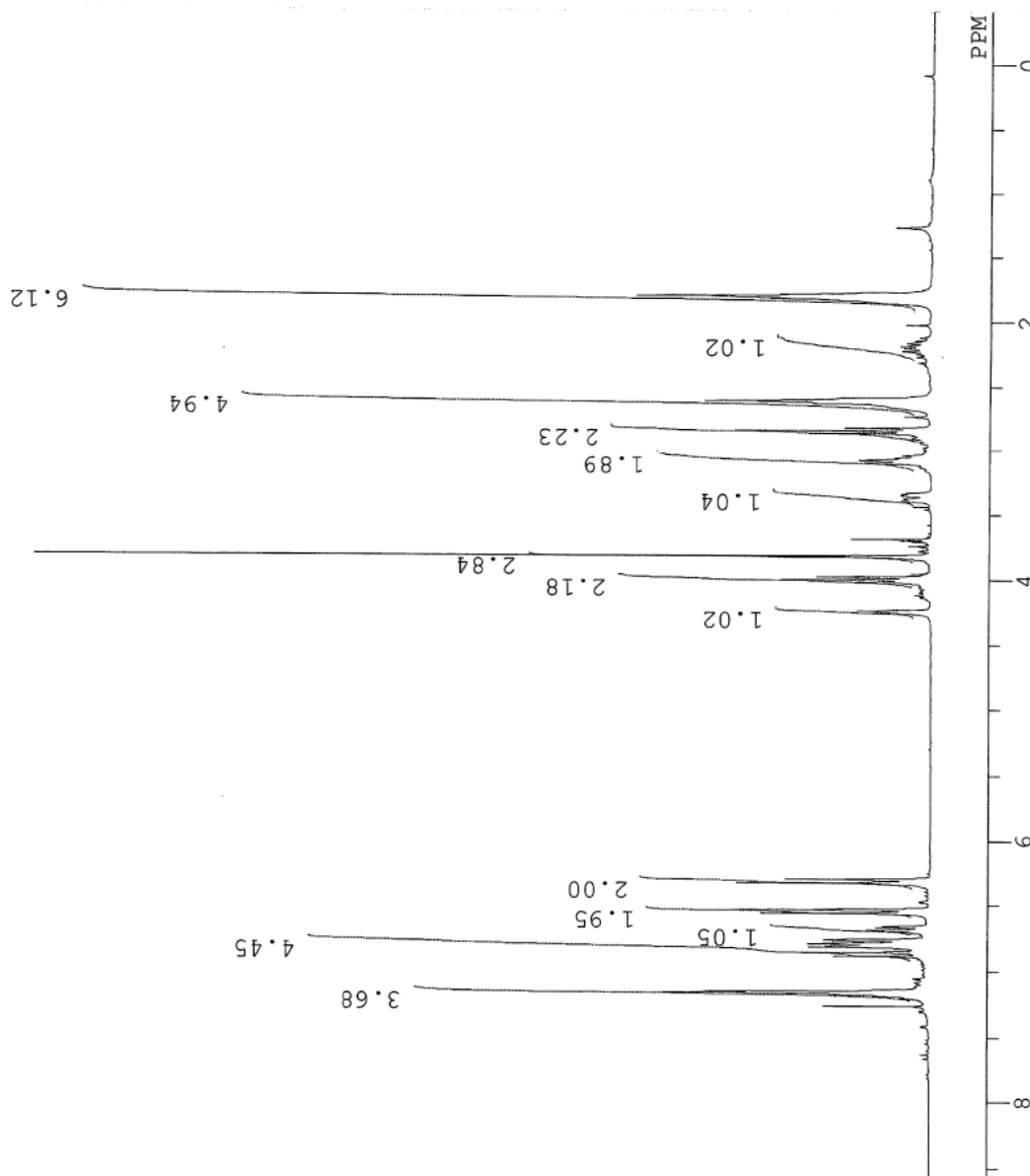
F:\kn-2-163-13C.als
kn-2-163-13C

DFILE F:\kn-2-163-13C.als
COMNT kn-2-163-13C
DATIM Sat Jan 20 10:30:10 20
OBNUC 13C
EXMOD BCM
OBFRQ 75.45 MHz
OBSET 124.00 KHz
OBFIN 1840.00 Hz
POINT 32768
FREQU 20408.10 Hz
SCANS 640
ACQTM 1.6056 sec
PD 1.3944 sec
PW1 4.10 usec
IRNUC 1H
CTEMP 20.6 c
SLVNT CDCL3
EXREF 77.00 ppm
BF 1.20 Hz
RGAIN 22



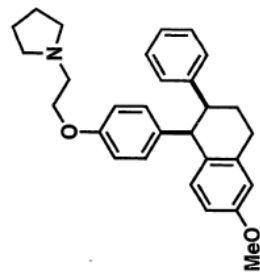
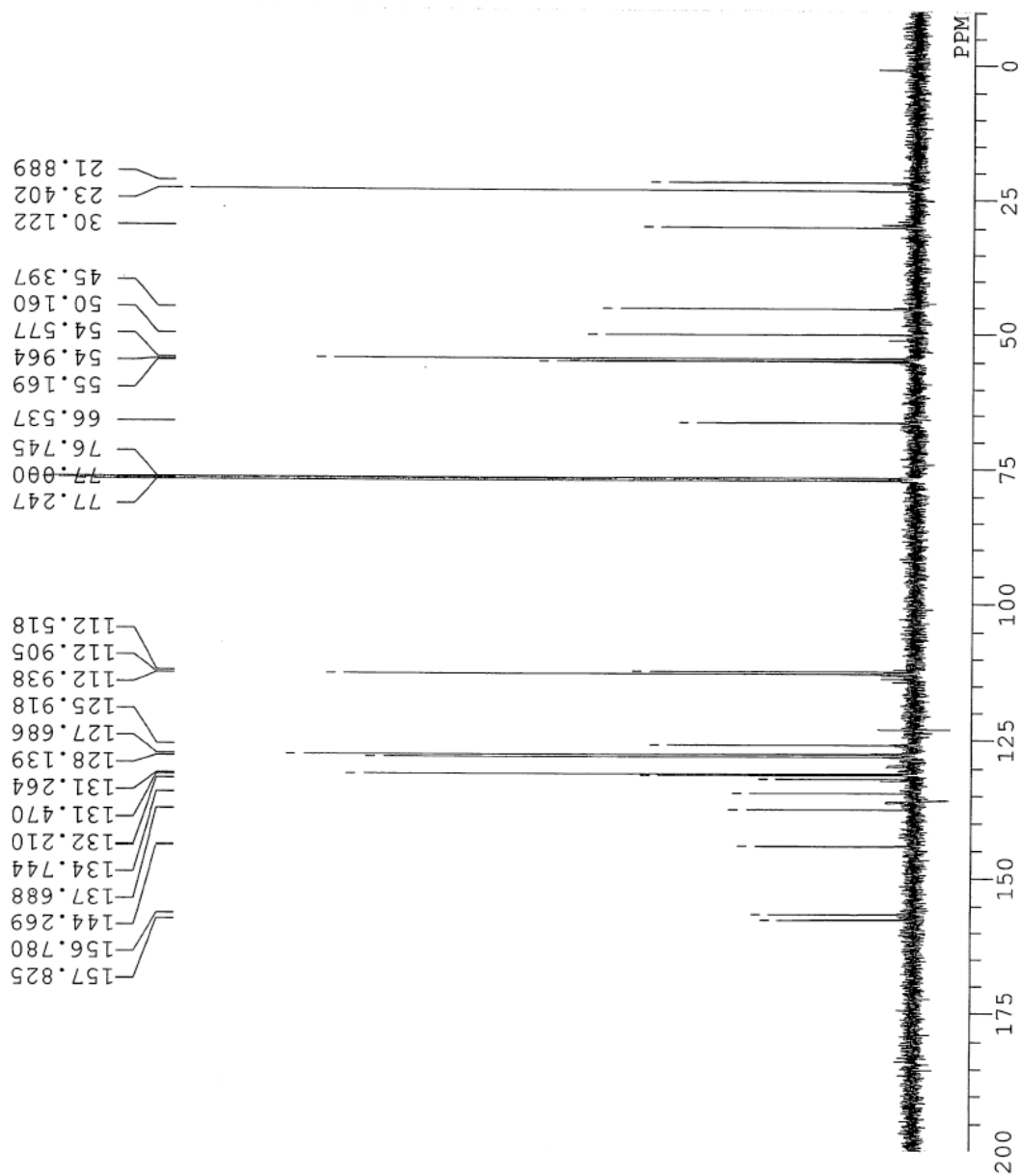
F:\kn-1-189nmr1.als
kn-1-189NMR1

DFILE F:\kn-1-189nmr1.als
COMNT kn-1-189NMR1
DATIM Tue Sep 19 16:50:27 2010
OBNUC 1H
EXMOD NON
OBFRQ 300.40 MHz
OBSET 130.00 KHz
OBFIN 1150.00 Hz
POINT 32768
FREQU 6020.40 Hz
SCANS 8
ACQTM 5.4428 sec
PD 1.5539 sec
PW1 5.40 usec
IRNUC 1H
CTEMP 21.9 c
SLVNT CDCL3
EXREF 7.26 ppm
BF 0.12 Hz
RGAIN 13



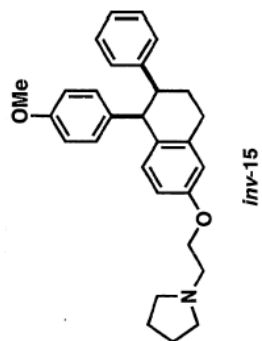
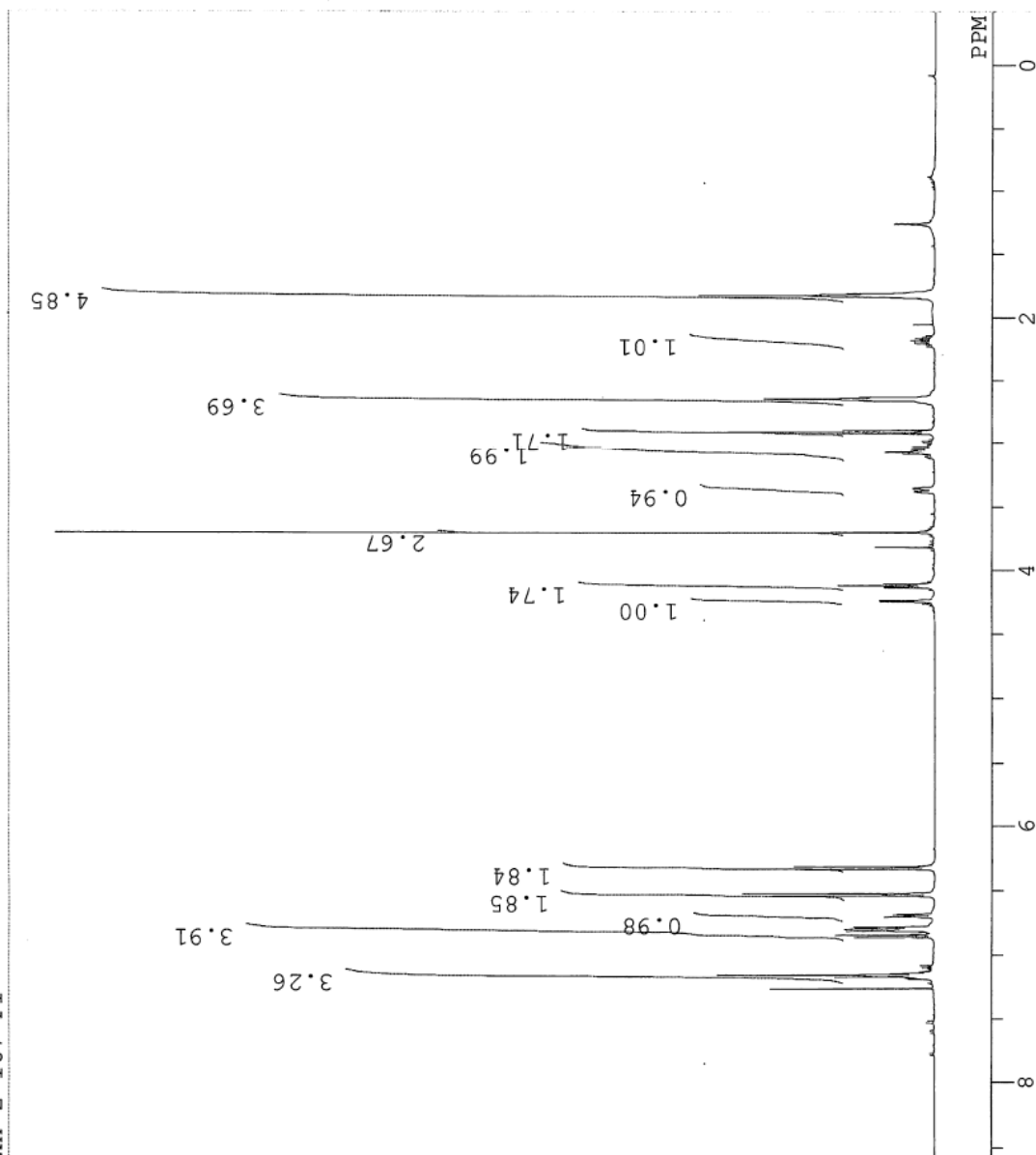
E:\kn-1-189NMR1.als
kn-1-189NMR1

DFILE E:\kn-1-189NMR1.als
COMNT kn-1-189NMR1
DATIM Thu Sep 21 16:04:46 2010
OBNUC 13C
EXMOD bcm
OBFRQ 125.65 MHz
OBSET 0.00 KHz
OBFIN 127958.00 Hz
POINT 32768
FREQU 33898.30 Hz
SCANS 500
ACQTM 0.9667 sec
PD 2.0333 sec
PW1 5.10 usec
IRNUC 1H
CTEMP 25.9 c
SLVNT CDCL3
EXREF 77.00 ppm
BF 1.20 Hz
RGAIN 30

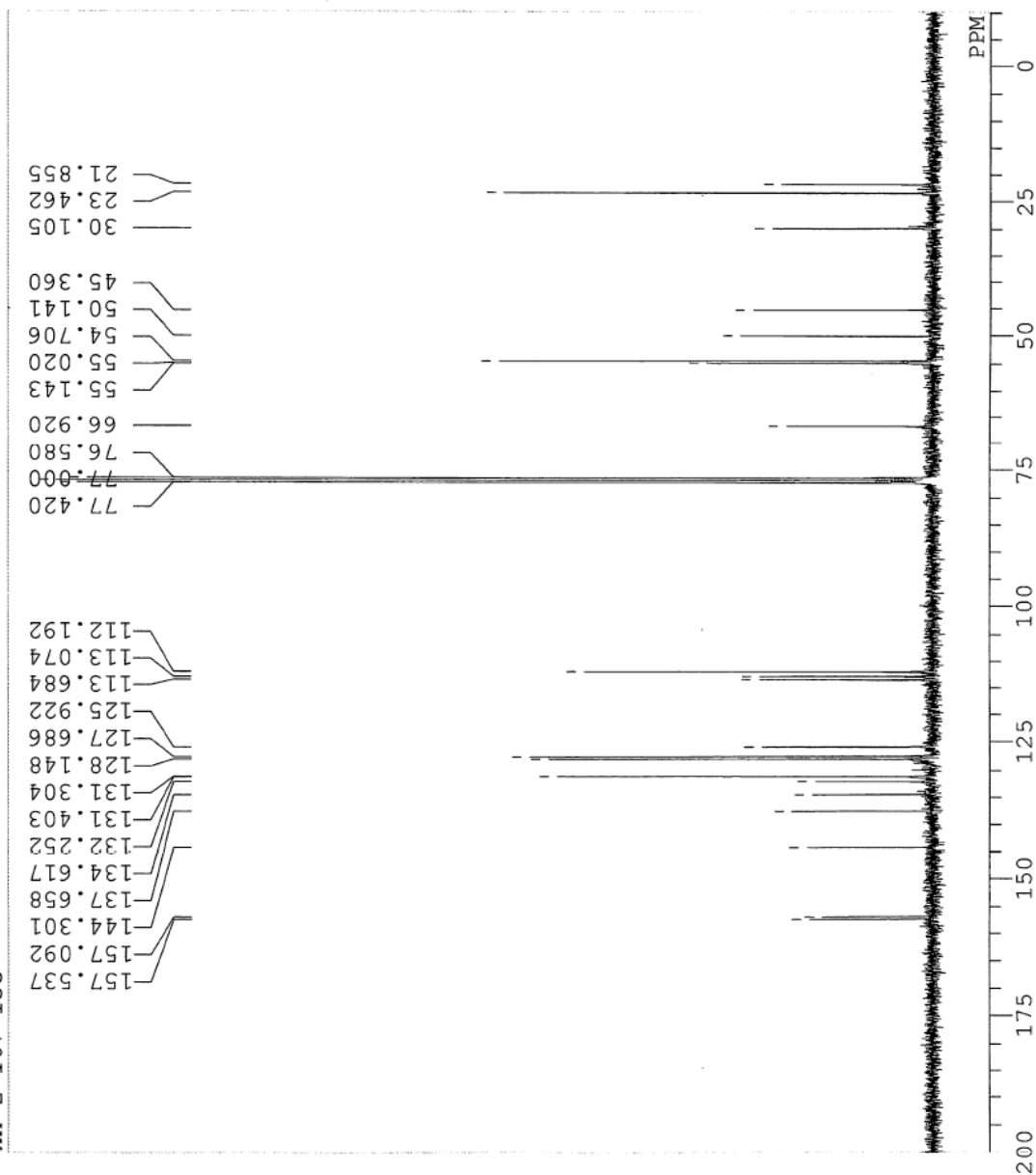


E:\kn-2-167-P1.als
kn-2-167-P1

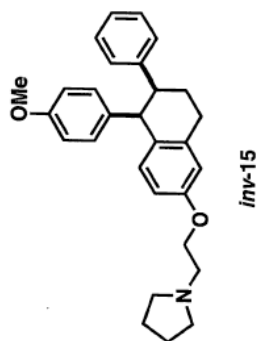
DFILE E:\kn-2-167-P1.als
COMNT kn-2-167-P1
DATIM Wed Jan 24 15:54:53 20
OBNUC 1H
EXMOD non
OBFRQ 500.00 MHz
OBSET 0.00 KHz
OBFIN 162160.00 Hz
POINT 32768
FREQU 10000.00 Hz
SCANS 8
ACQTM 3.2768 sec
PD 3.7232 sec
PW1 5.95 usec
IRNUC 1H
CTEMP 22.4 C
SLVNT CDCL3
EXREF 7.26 ppm
BF 0.12 Hz
RGAIN 16



F:\kn-2-167-13C.als
kn-2-167-13C

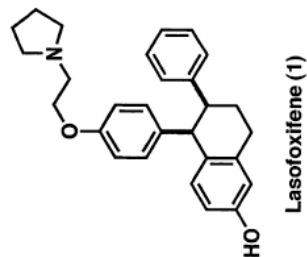
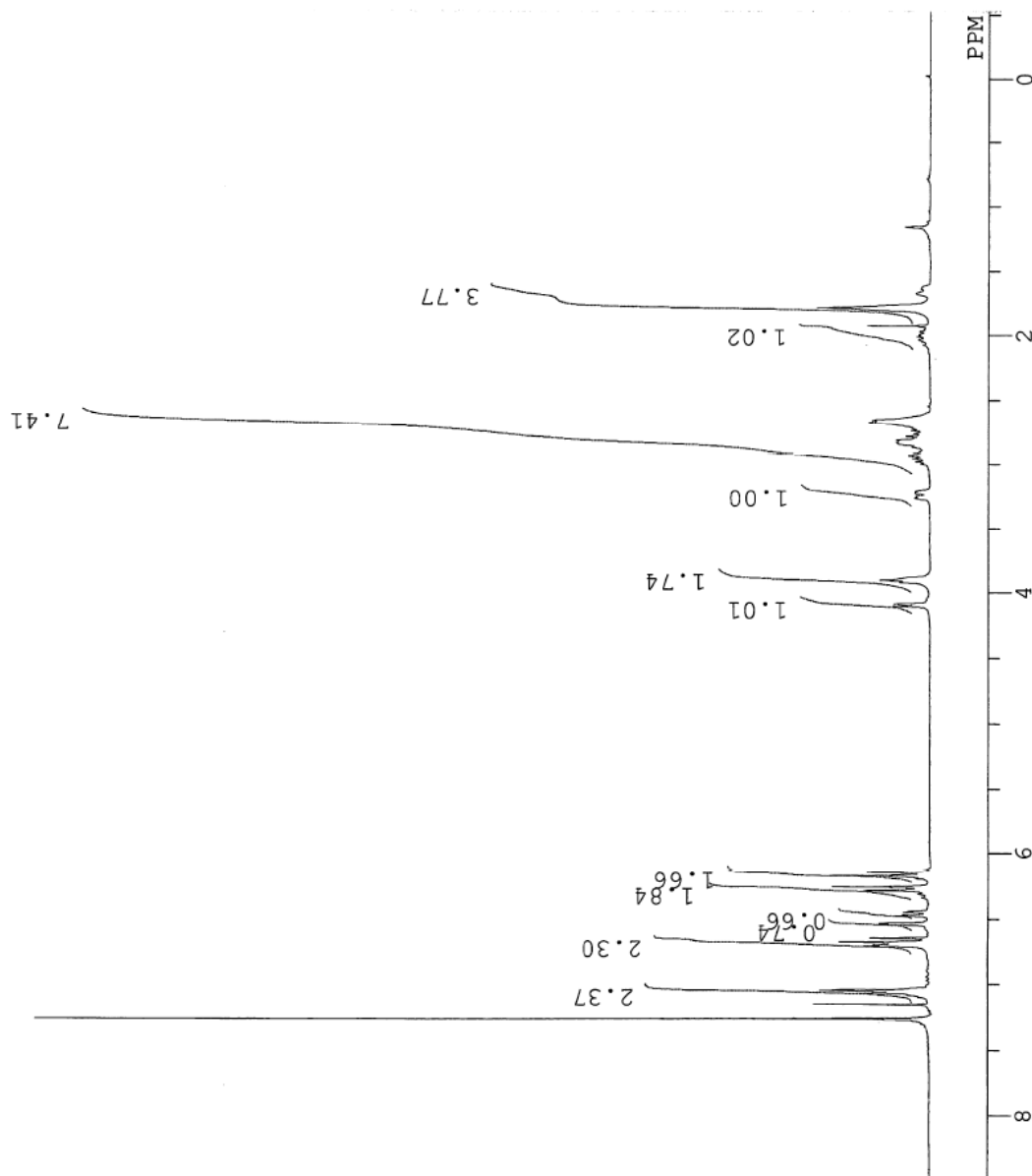


DFILE F:\kn-2-167-13C.als
COMNT kn-2-167-13C
DATIM Wed Jan 24 18:18:50 20
OBNUC 13C
EXMOD BCM
OBFRQ 75.45 MHz
OBSET 124.00 KHz
OBFIN 1840.00 Hz
POINT 32768
FREQU 20408.10 Hz
SCANS 900
ACQTM 1.6056 sec
PD 1.3944 sec
PW1 4.10 usec
IRNUC 1H
CTEMP 20.7 C
SLVNT CDCL3
EXREF 77.00 ppm
BF 1.20 Hz
RGAIN 22



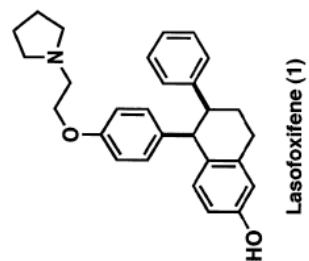
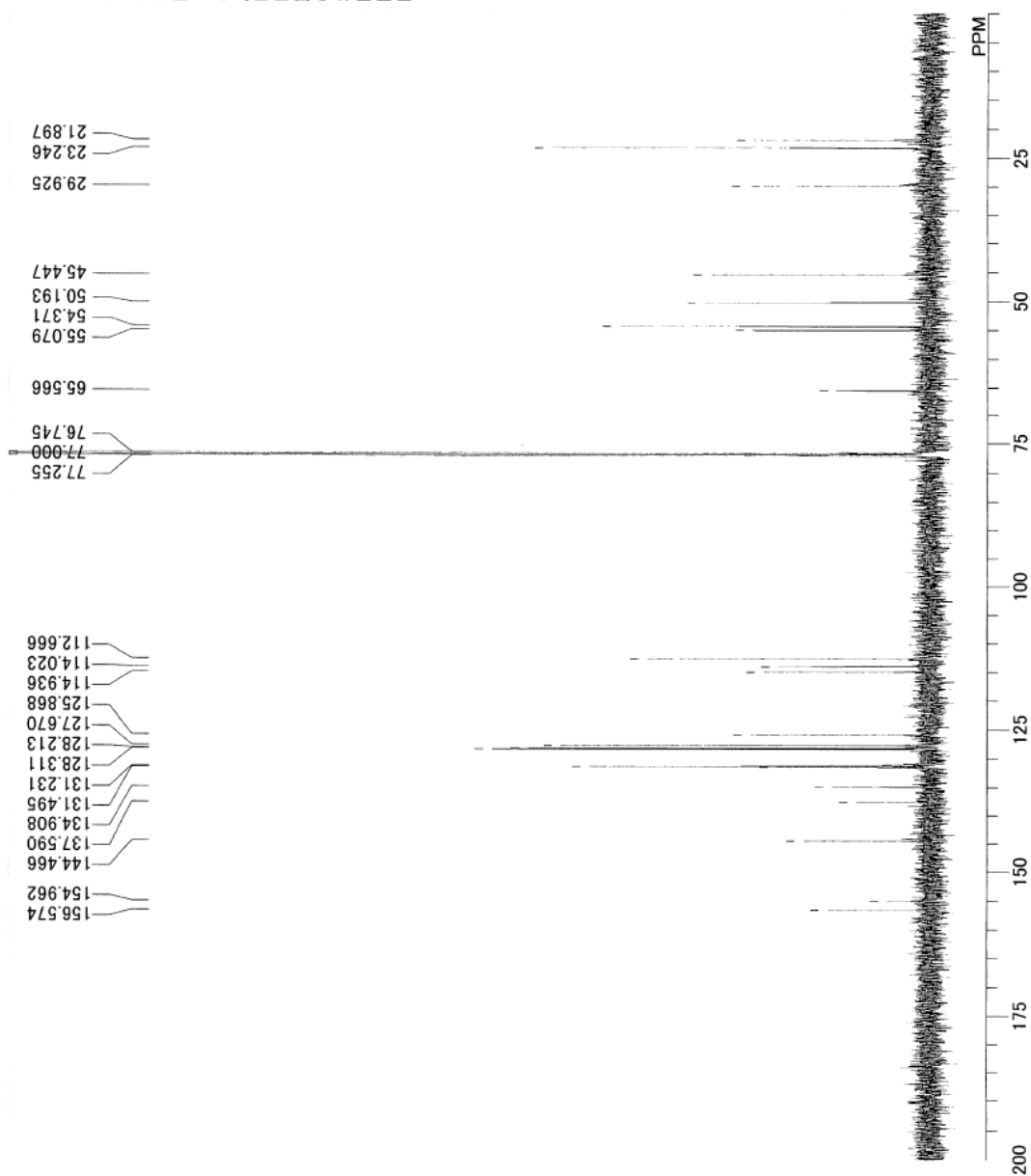
F:\kn-1-199-1fin.als
kn-1-199-1fin

DFILE F:\kn-1-199-1fin.als
COMNT kn-1-199-1fin
DATIM Fri Sep 29 10:45:19 2010
OBNUC 1H
EXMOD NON
OBFRQ 300.40 MHz
OBSET 130.00 KHz
OBFIN 1150.00 Hz
POINT 32768
FREQU 6020.40 Hz
SCANS 8
ACQTM 5.4428 sec
PD 1.5539 sec
PW1 5.40 usec
IRNUC 1H
CTEMP 21.3 c
SLVNT CDCL3
EXREF 7.26 ppm
BF 0.12 Hz
RGAIN 16



DFILE
COMNT
DATM
OBNUC
EXMOD
OBFRQ
OBSET
OBFIN
POINT
FREQU
SCANS
ACQTM
PD
PWI
IRNUC
CTEMP
SLVNT
EXREF
BF
RGAIN

F:\kn-1-199laso13C.als
Fri Sep 29 17:11:41 2006
13C
bcm
125.65 MHz
0.00 KHz
127958.00 Hz
32768
33898.30 Hz
880
0.9667 sec
2.0333 sec
5.10 usec
1H
25.6 c
CDCL3
77.00 ppm
1.20 Hz
28



E:\kn-InvnafoP3.als
kn-2-167-P3

DFILE E:\kn-InvnafoP3.als
COMNT kn-2-167-P3
DATIM Sat Jan 27 15:16:36 20
OBNUC 1H
EXMOD non
OBFRQ 500.00 MHz
OBSET 0.00 KHz
OBFIN 162160.00 Hz
POINT 32768
FREQU 10000.00 Hz
SCANS 8
ACQTM 3.2768 sec
PD 3.7232 sec
PW1 5.95 usec
IRNUC 1H
CTEMP 22.3 C
SLVNT CDCl3
EXREF 0.00 ppm
BF 0.12 Hz
RGAIN 23

