

Supplementary Materials

General Experimental Methods

^1H NMR spectra were recorded at 500 MHz, and ^{13}C NMR spectra were recorded at 125 MHz with tetramethylsilane (TMS) and solvent signals as internal references. HR-ESI-MS data were acquired with a FT-ICR mass spectrometer. IR spectra were measured on a FT-IR spectrometer as KBr pellets. Column chromatography (CC) was carried out on silica gel (200–300 mesh from Qingdao Marine Chemical Co. Ltd., China).

Chemicals

1,1-diphenyl-2-picrylhydrazyl (DPPH) were purchased from Sigma (St. Louis, MO, USA). Solvents (analytical grade) for extraction and CC were purchased from Huadong Chemicals (Hangzhou, China).

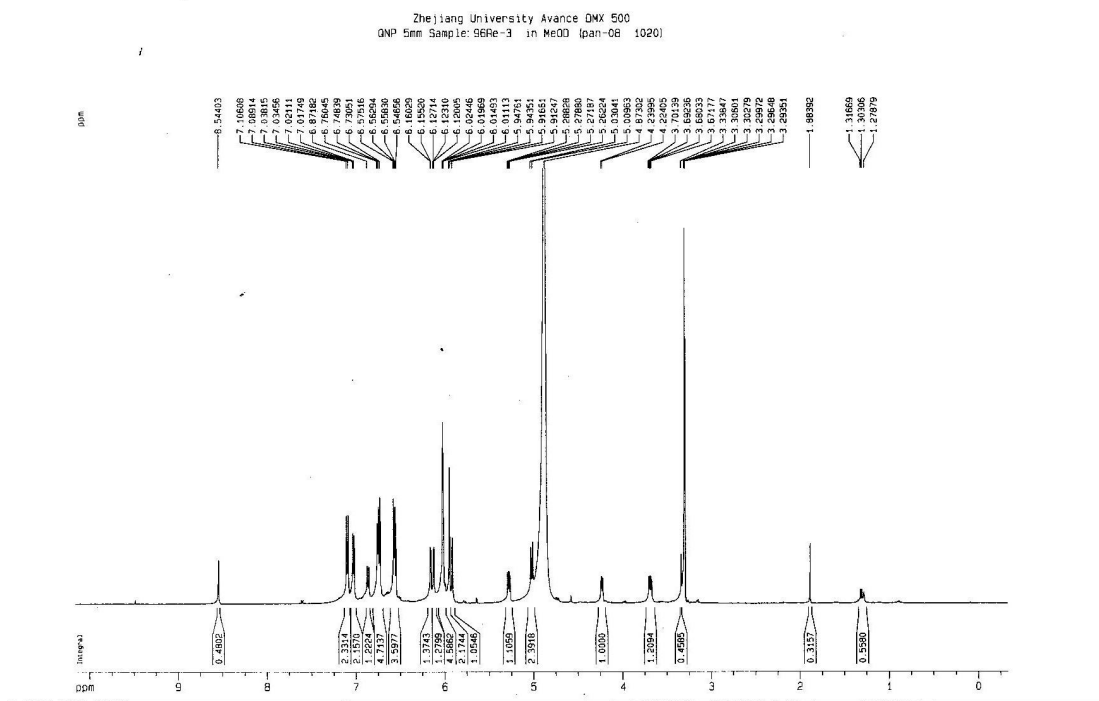
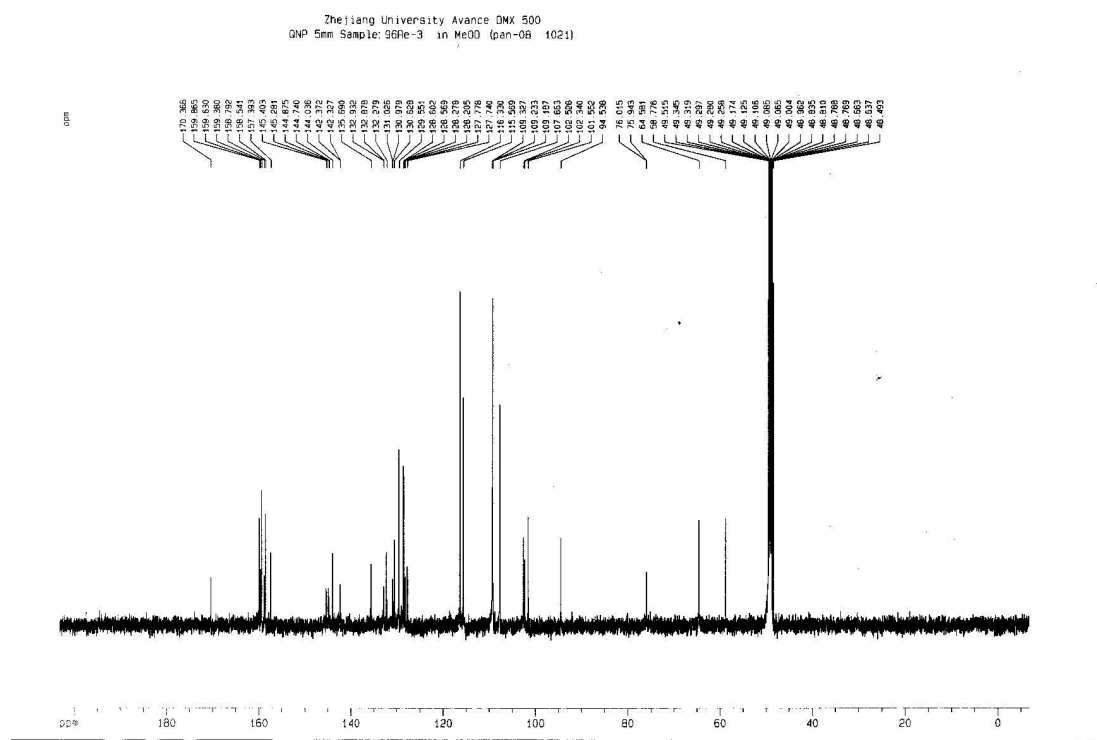
Figure S1. ^1H NMR spectrum of 1.Figure S2. ^{13}C NMR spectrum of 1.

Figure S3. DEPT 135° spectrum of **1**.

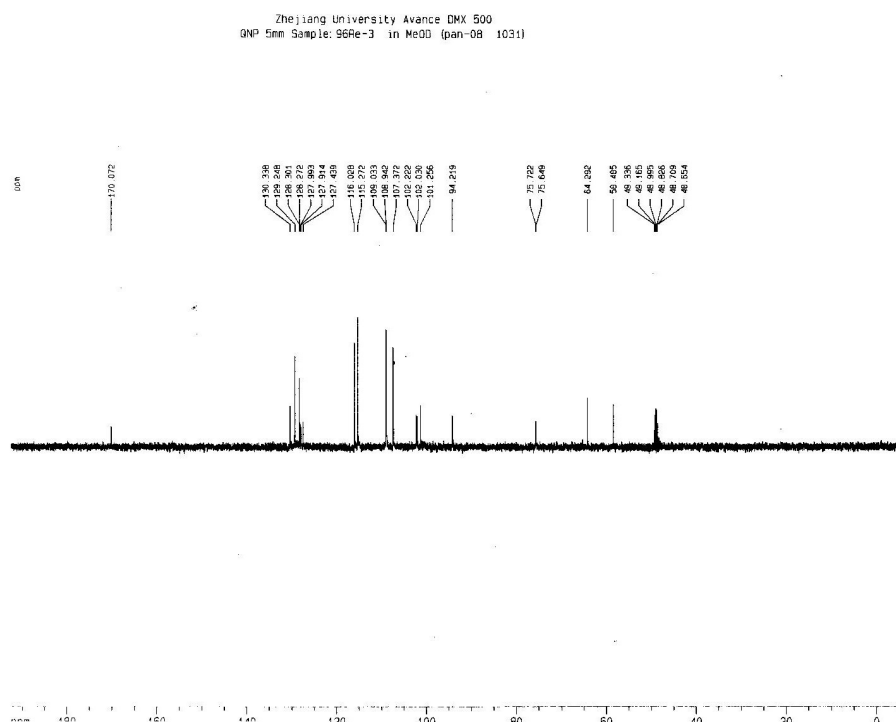


Figure S4. ^1H - ^1H COSY spectrum of **1**.

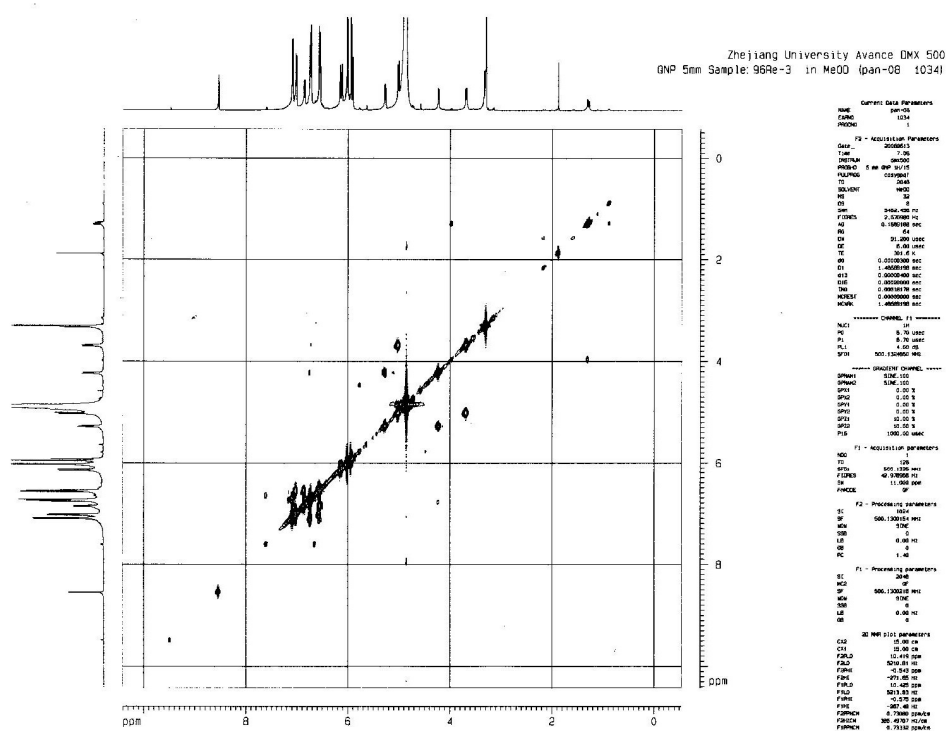


Figure S5. HMQC spectrum of 1.

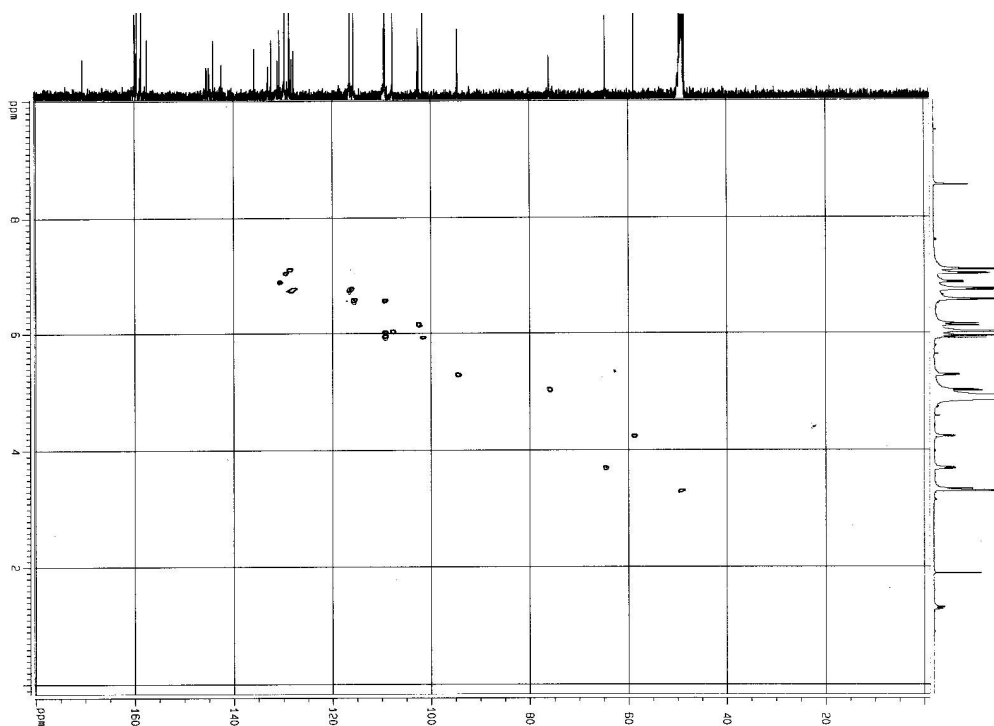


Figure S6. HMBC spectrum of 1.

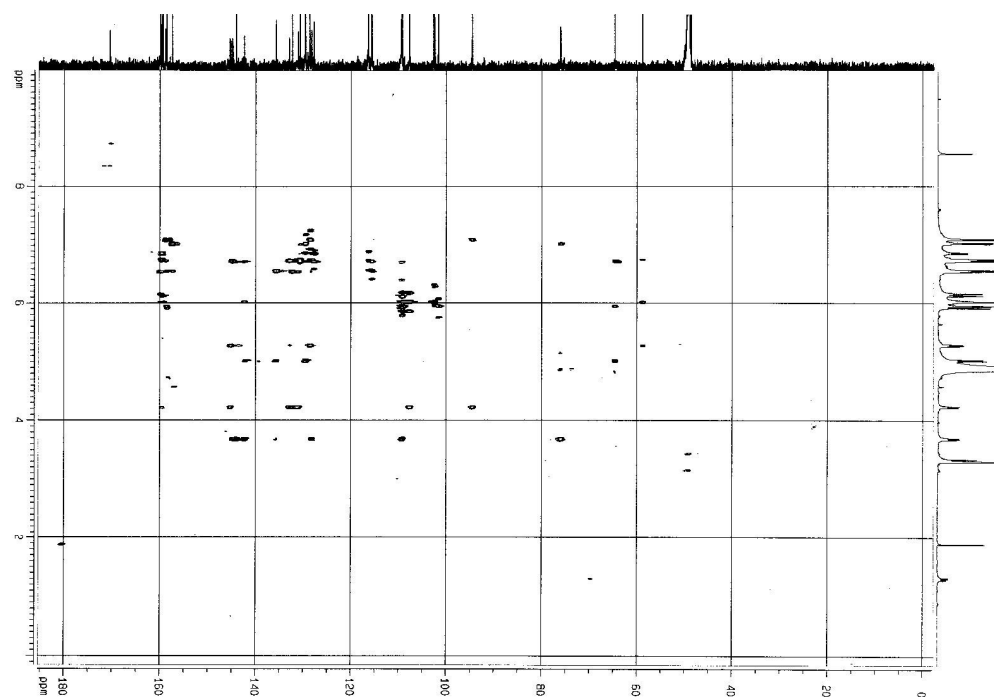


Figure S7. NOESY spectrum of 1.

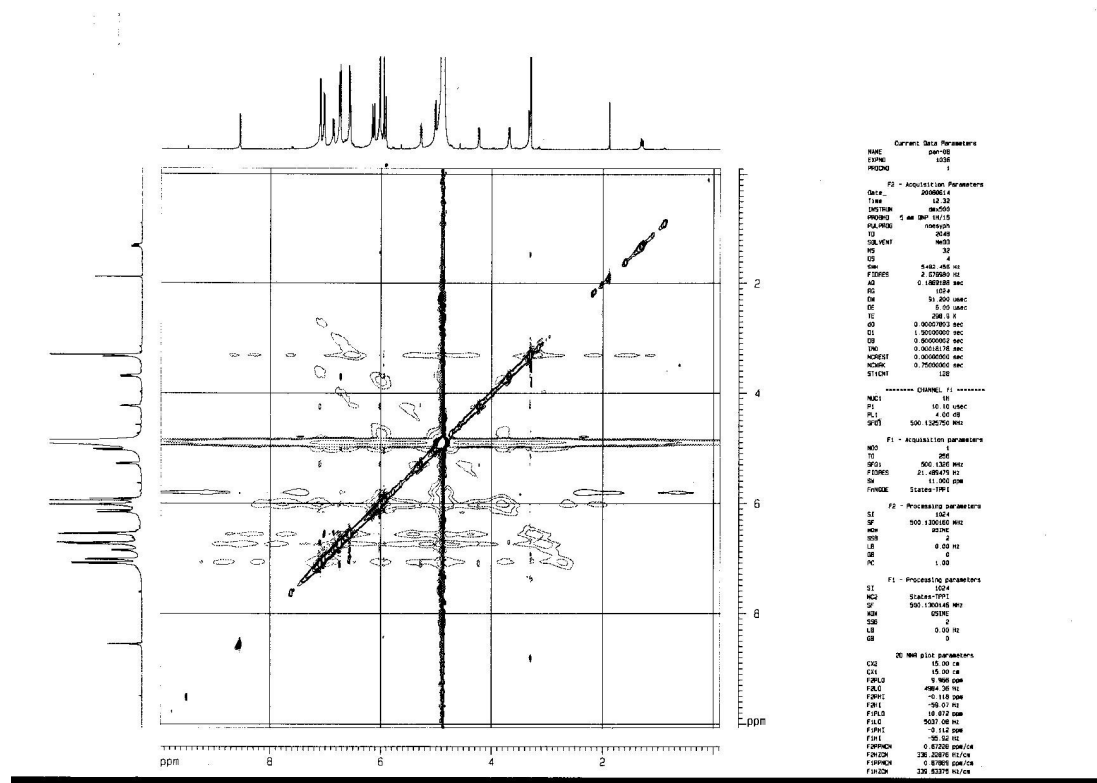


Figure S8. HRMS spectrum of 1.

