

Supplementary Information

Cellular Uptake and Photo-Cytotoxicity of a Gadolinium(III)-DOTA-Naphthalimide Complex “Clicked” to a Lipidated Tat Peptide

William I. O'Malley, Riccardo Rubbiani, Margaret L. Aulsebrook, Michael R. Grace, Leone Spiccia, Kellie L. Tuck, Gilles Gasser, and Bim Graham

Contents	Page(s)
NMR spectra of reported compounds	2–7
LC traces for final ligand and Gd(III) complexes	8
LC trace for peptide conjugate	9

NMR Spectra of Reported Compounds

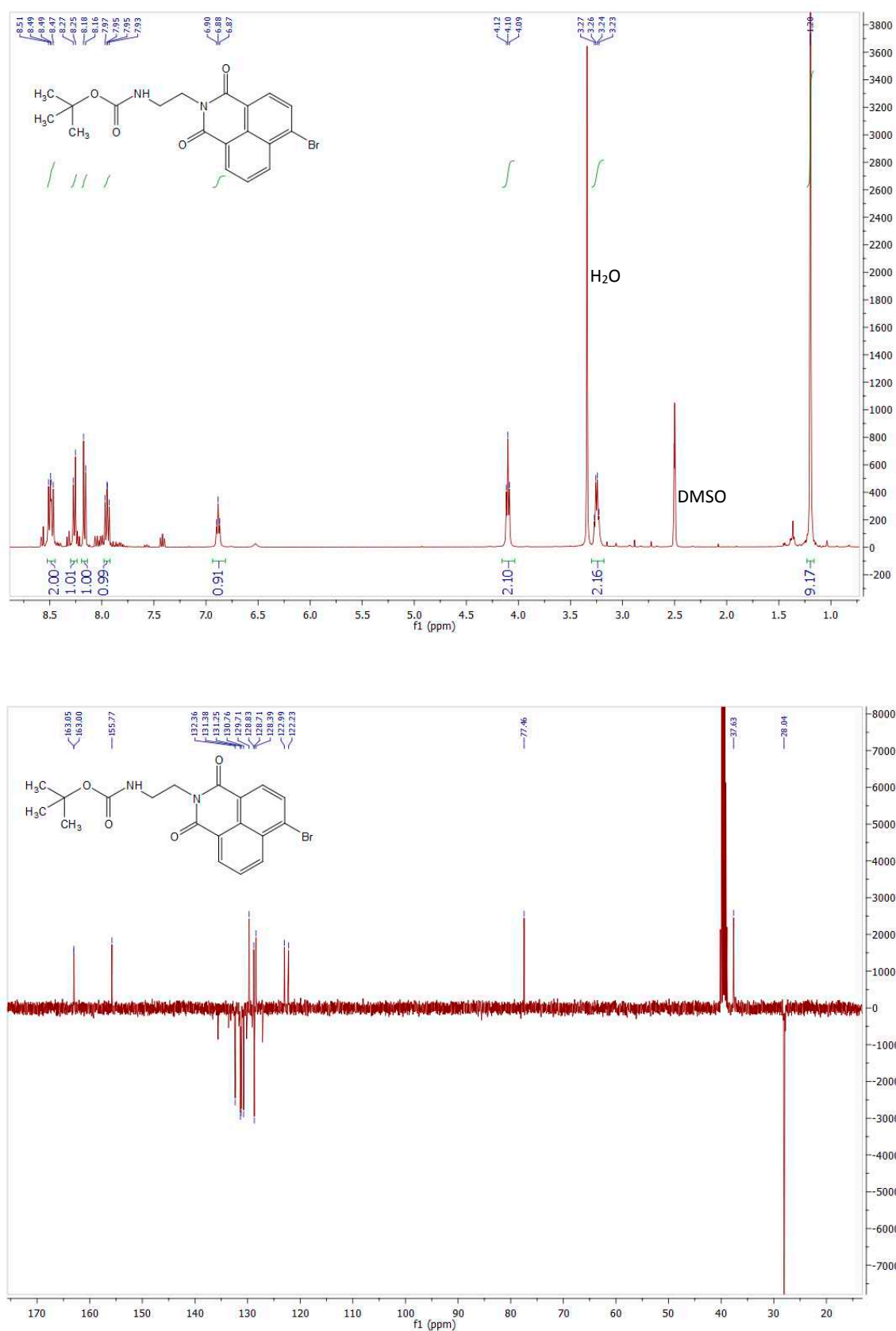


Figure S1. ¹H- and ¹³C-NMR spectra of compound 1 in DMSO-*d*₆.

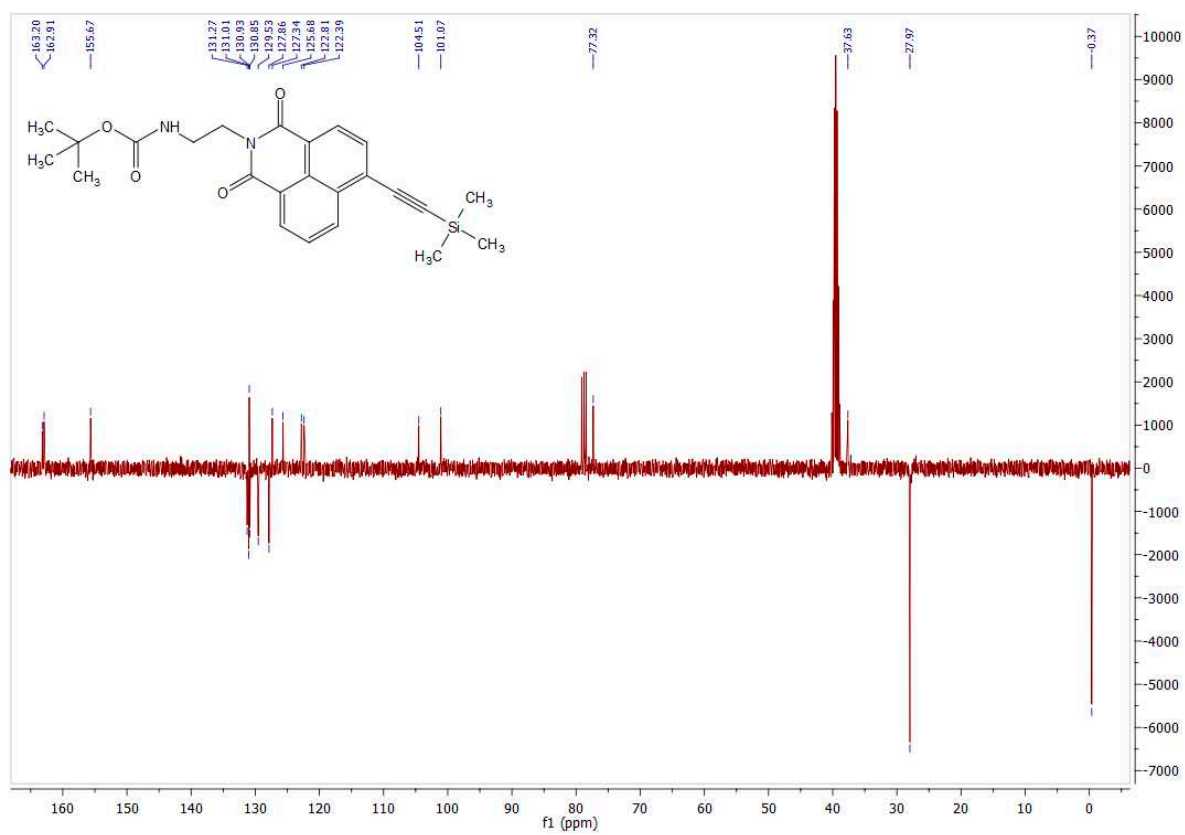
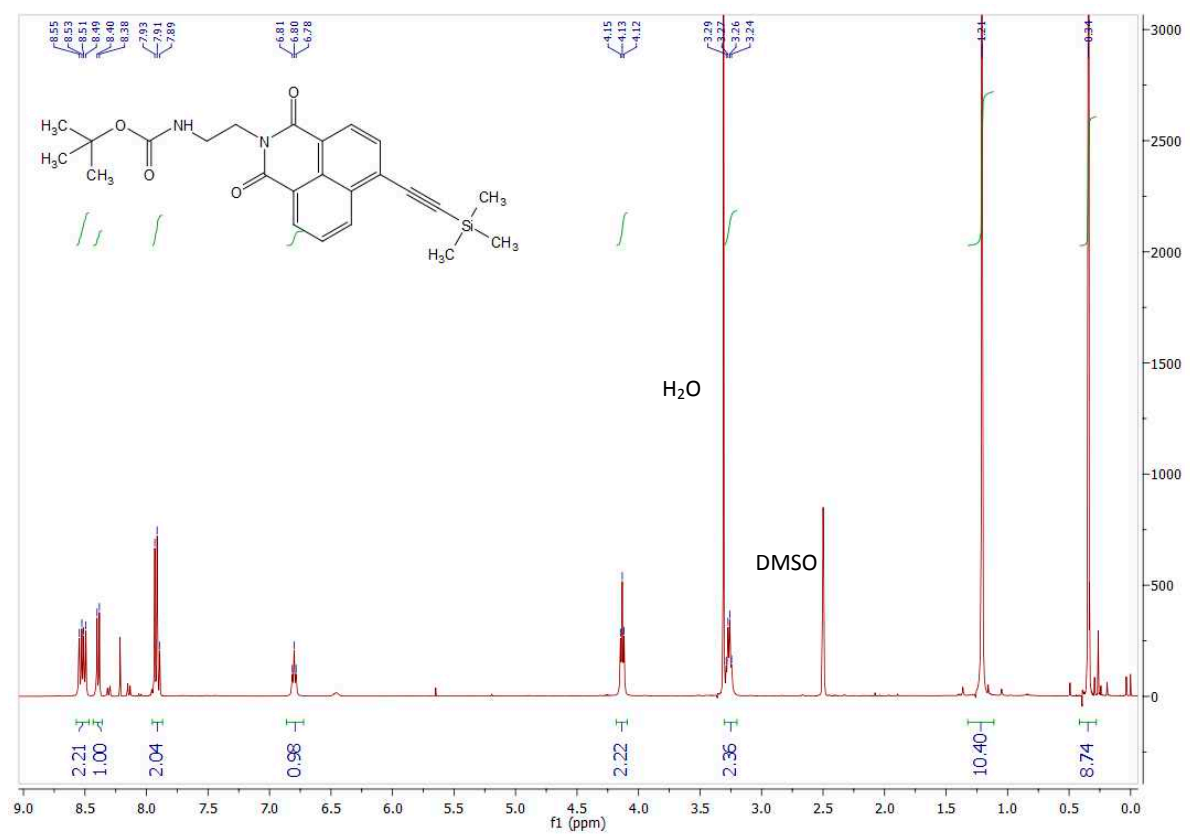


Figure S2. ¹H- and ¹³C-NMR spectra of compound 2 in DMSO-*d*₆.

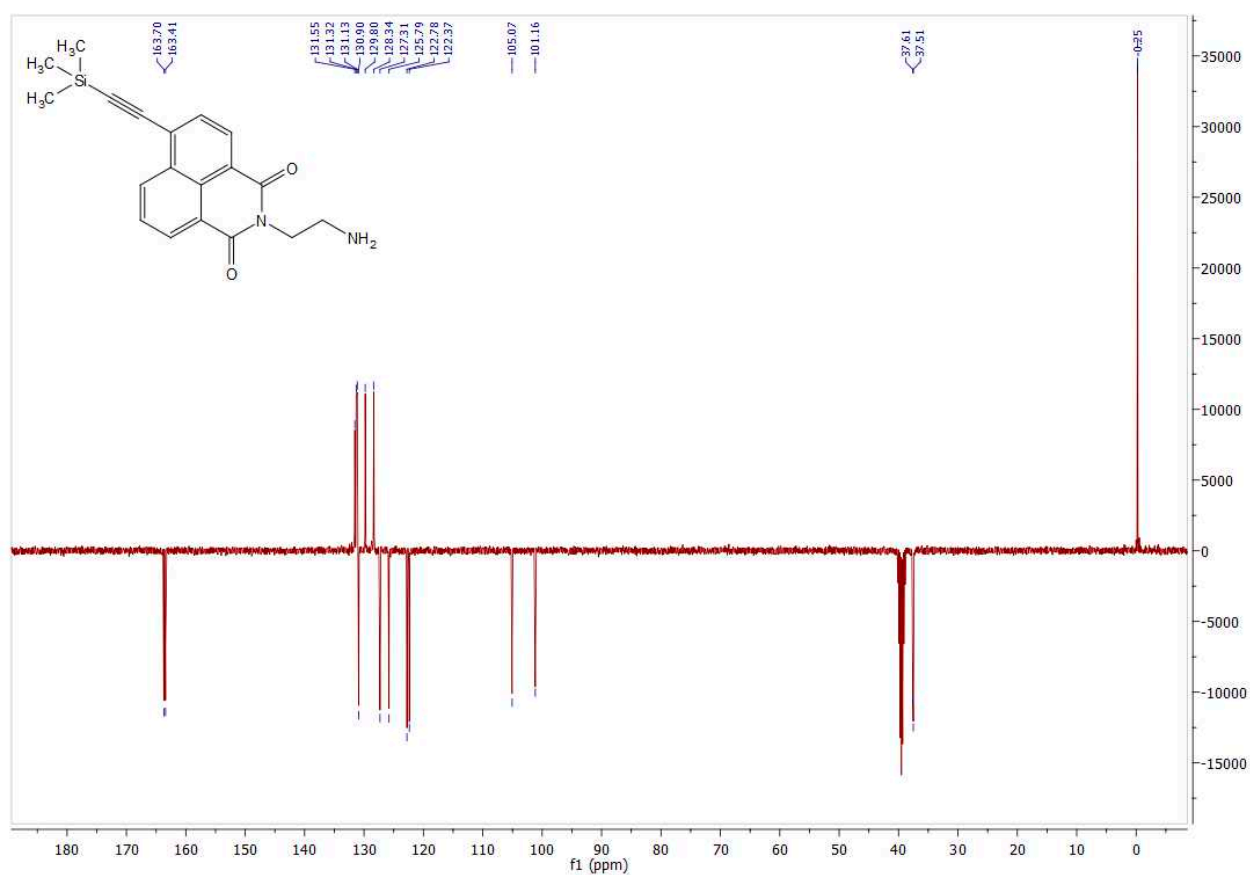
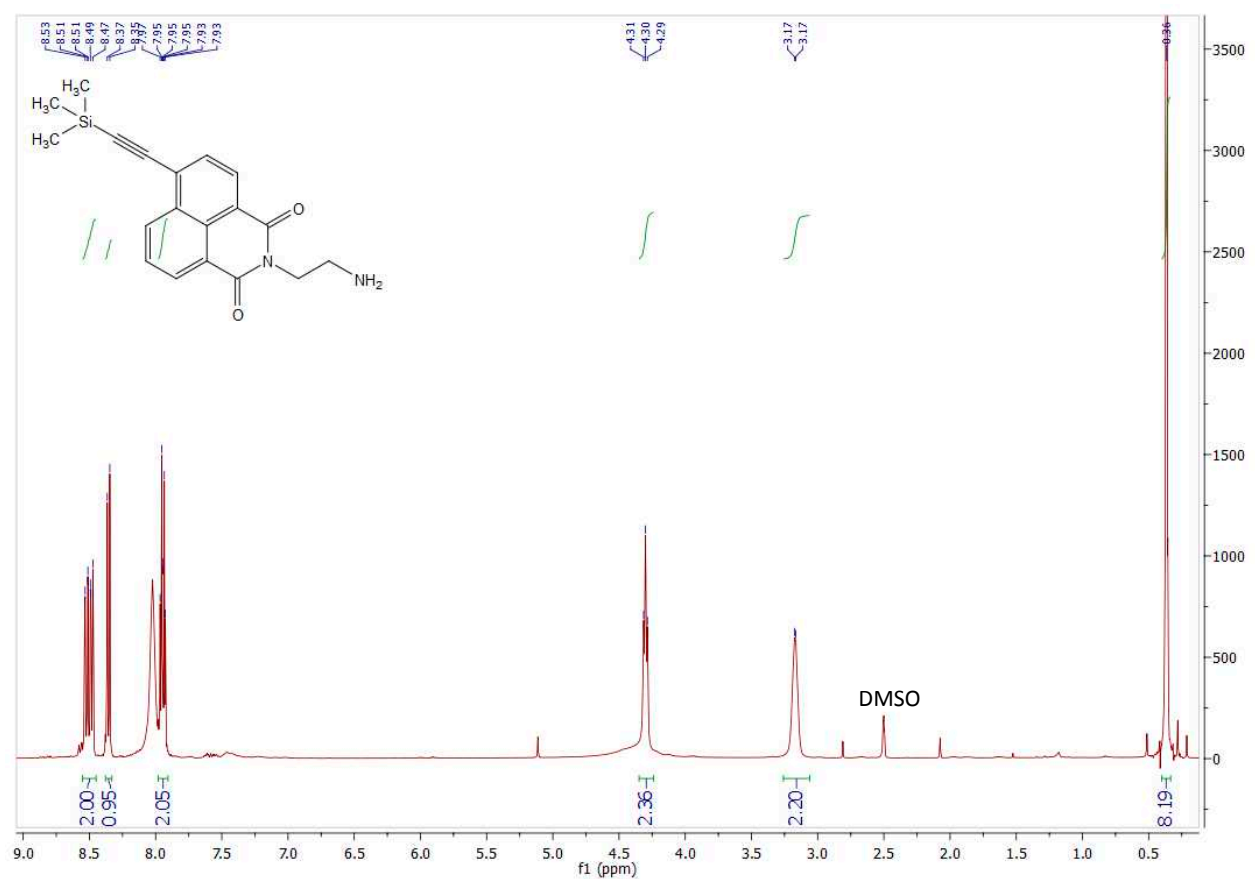


Figure S3. ¹H- and ¹³C-NMR spectra of compound 3 in DMSO-*d*₆.

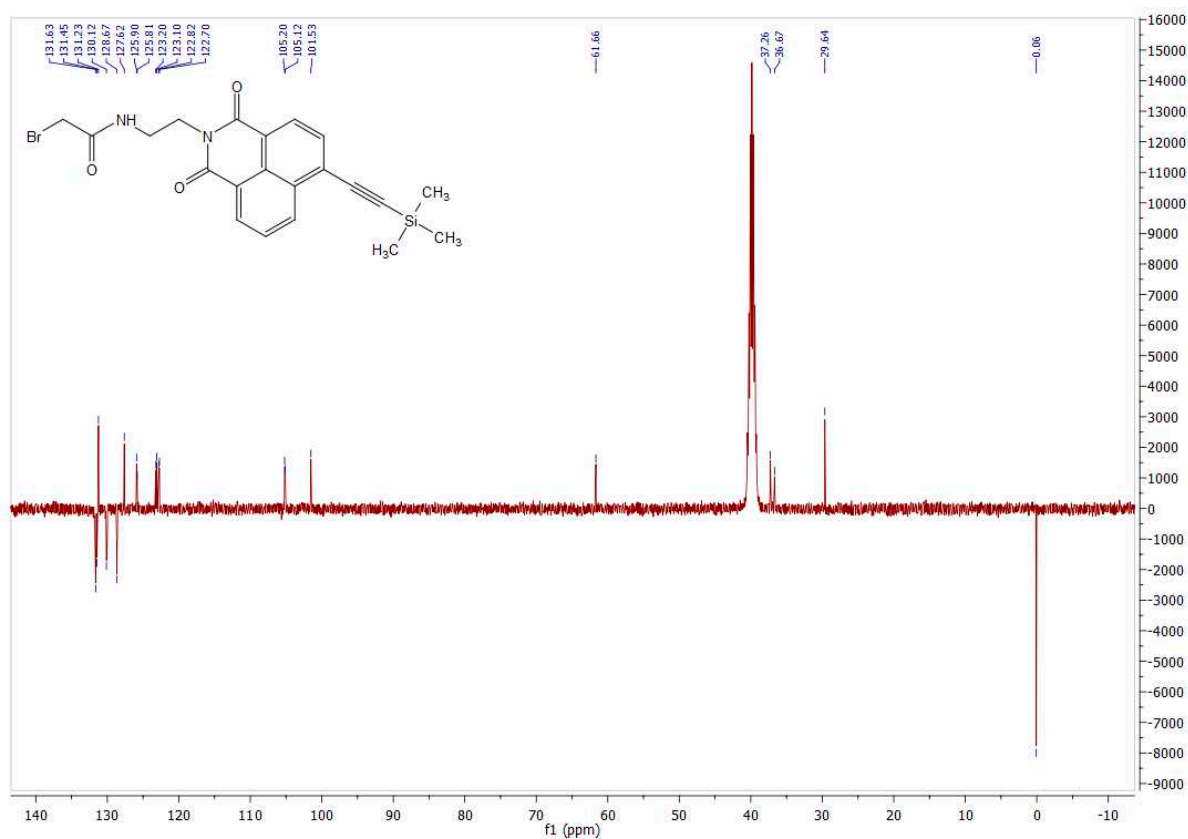
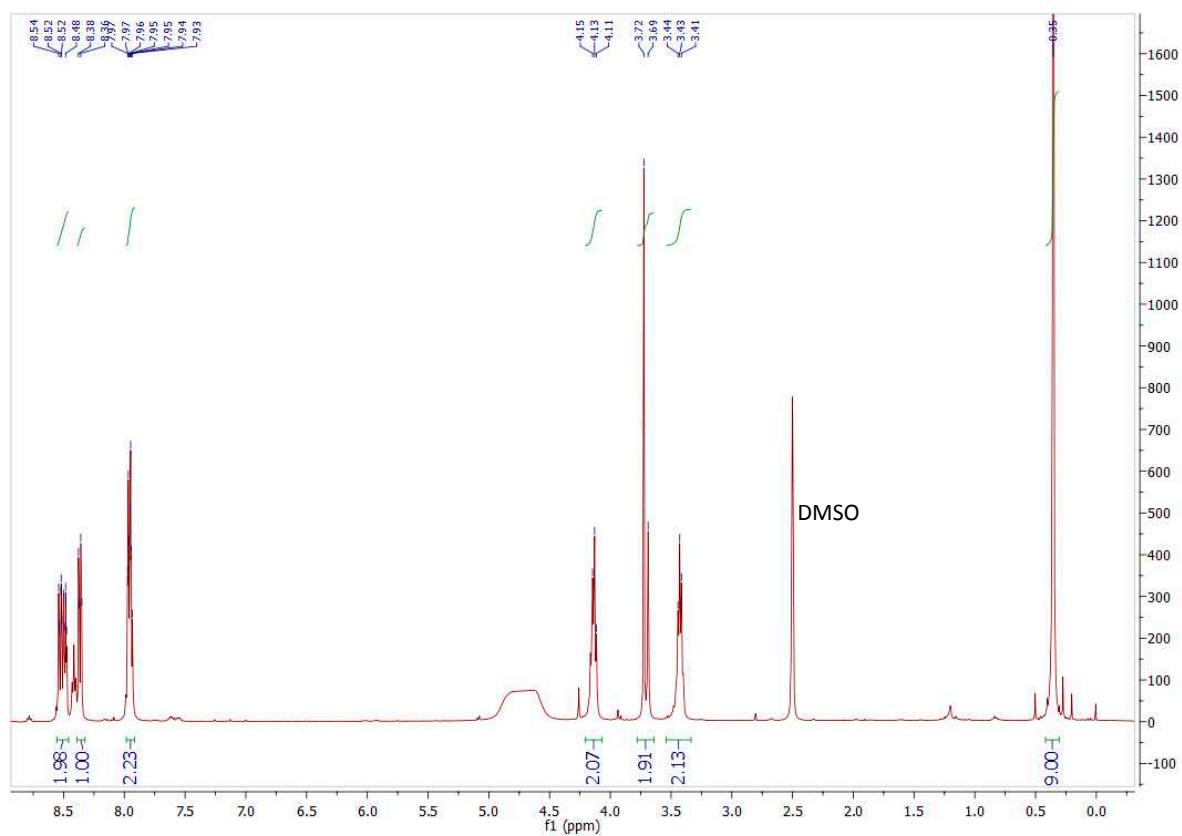


Figure S4. ¹H- and ¹³C-NMR spectra of compound 4 in DMSO-*d*₆.

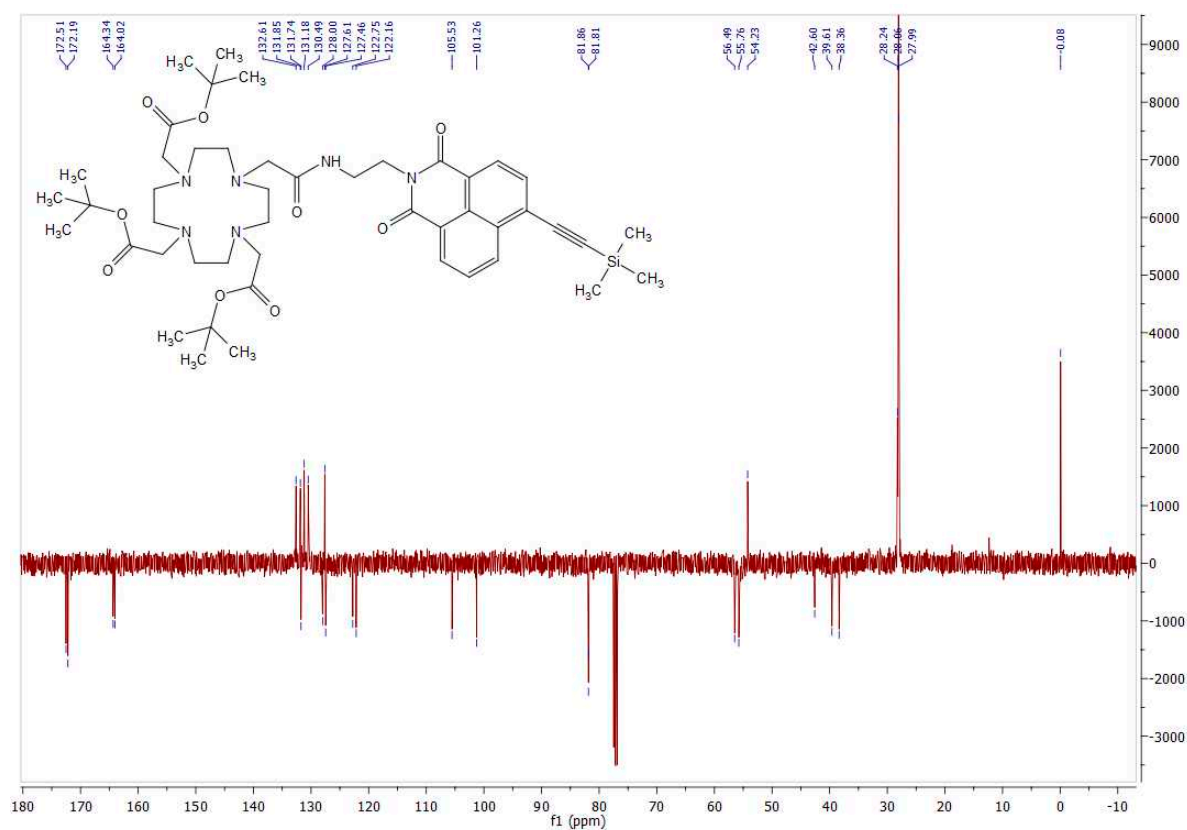
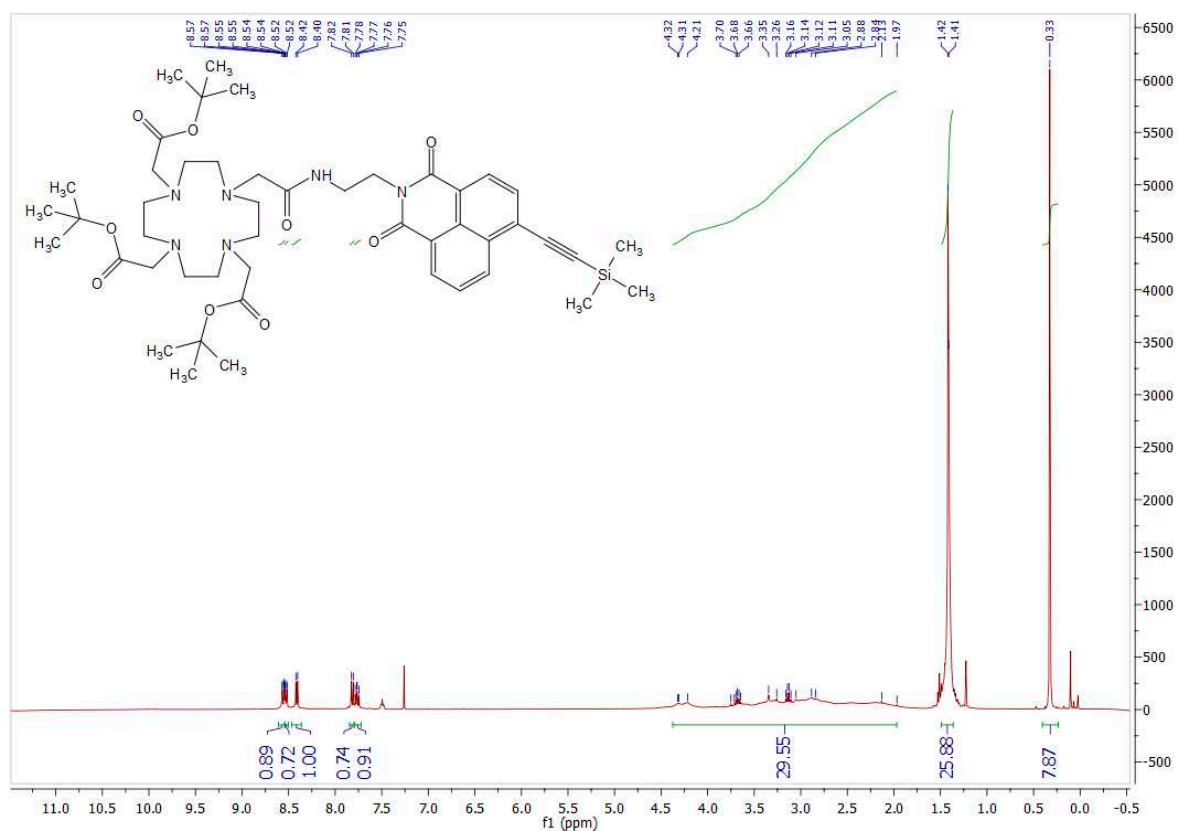


Figure S5. ¹H- and ¹³C-NMR spectra of compound 5 in CDCl₃.

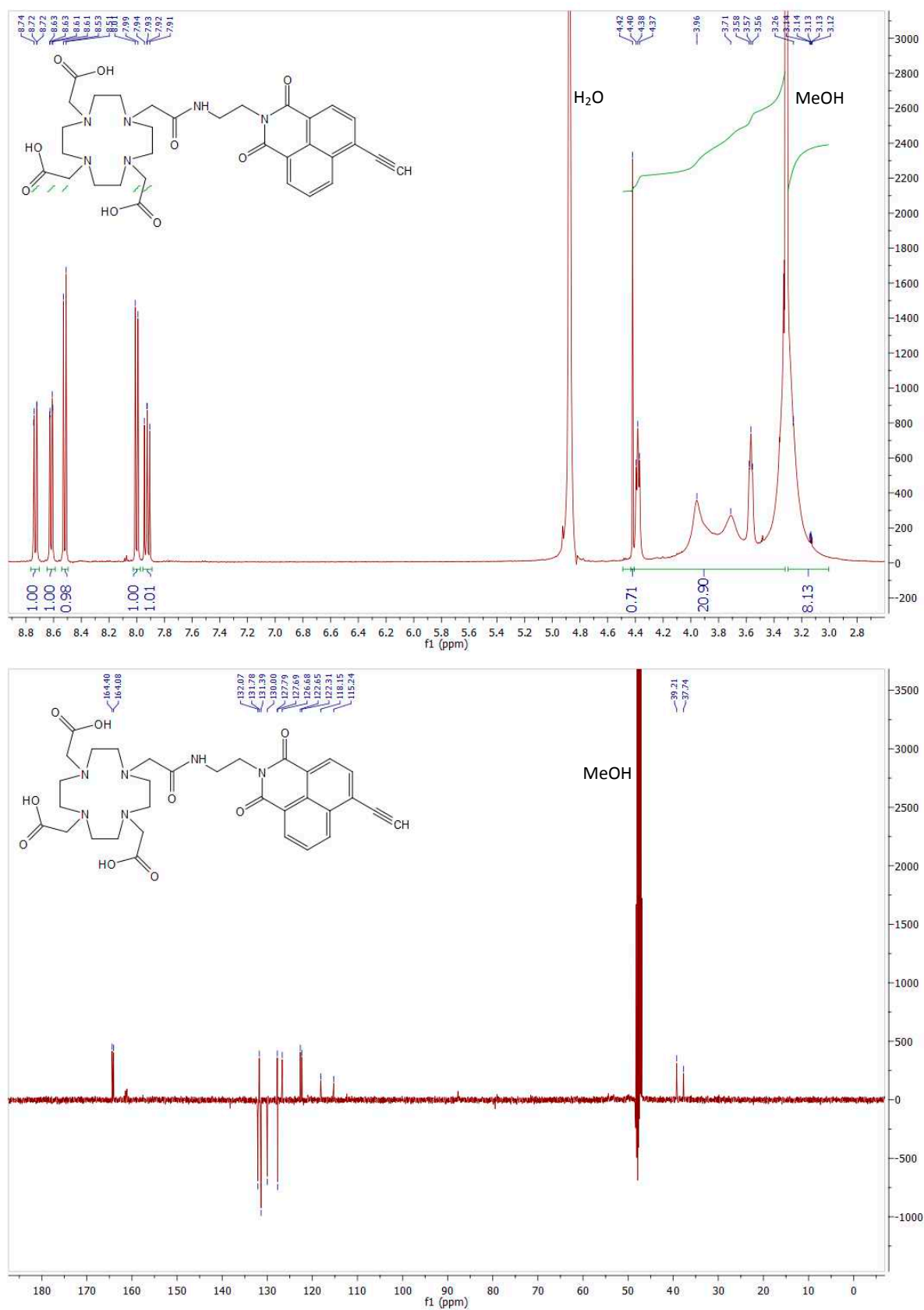


Figure S6. ¹H- and ¹³C-NMR spectra of ligand L in CD₃OD.

LC Traces for Final Ligand and Gd(III) Complexes

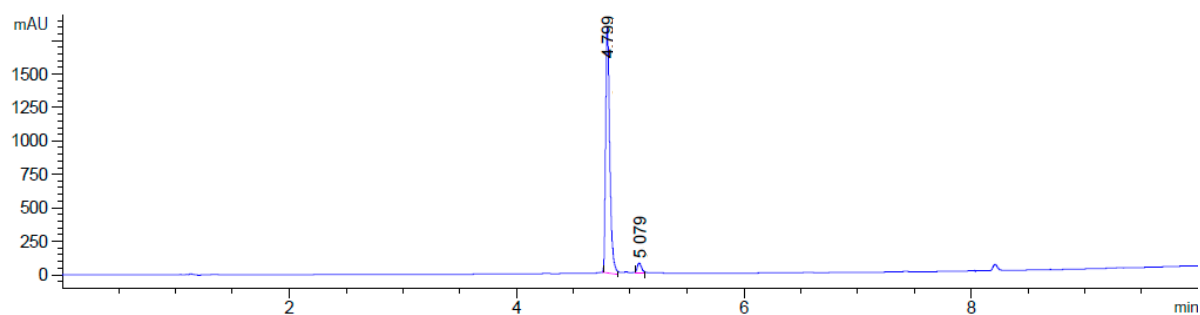


Figure S7. LC trace for ligand L (254nm).

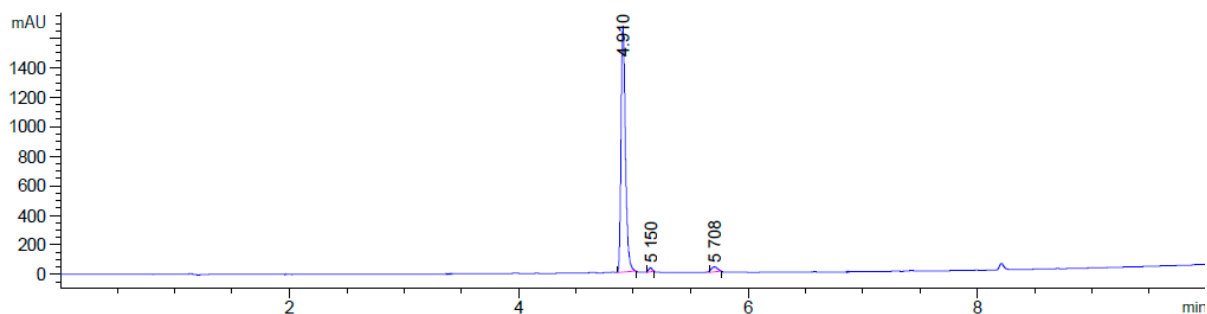


Figure S8. LC trace for Gd-L (254nm).

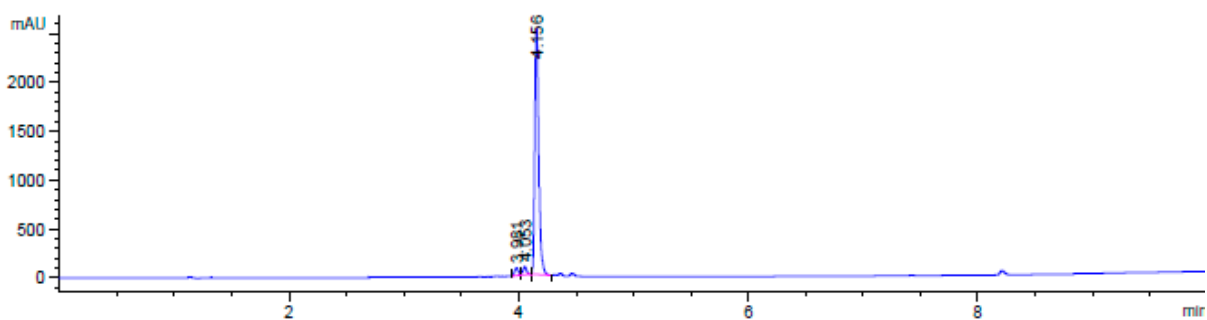


Figure S9. LC trace for "clicked" Gd-L (254nm).

LC Trace for Peptide Conjugate

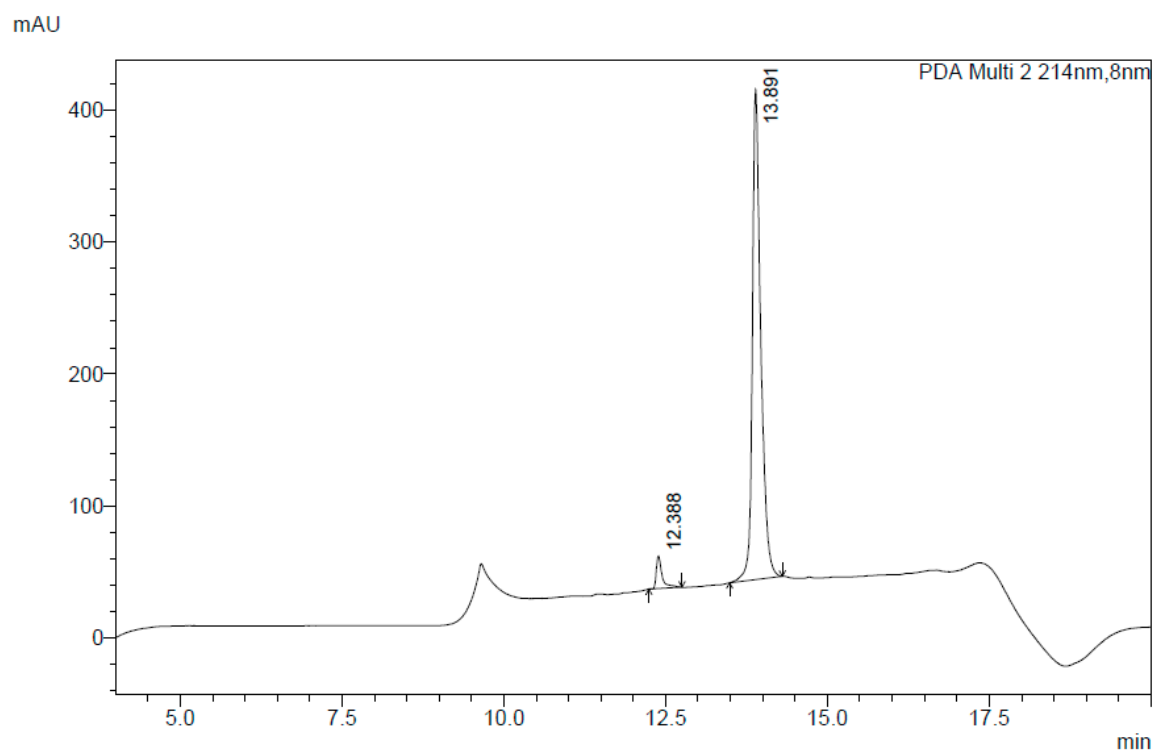


Figure S10. LC trace for Gd-L-Tat peptide conjugate (214 nm).