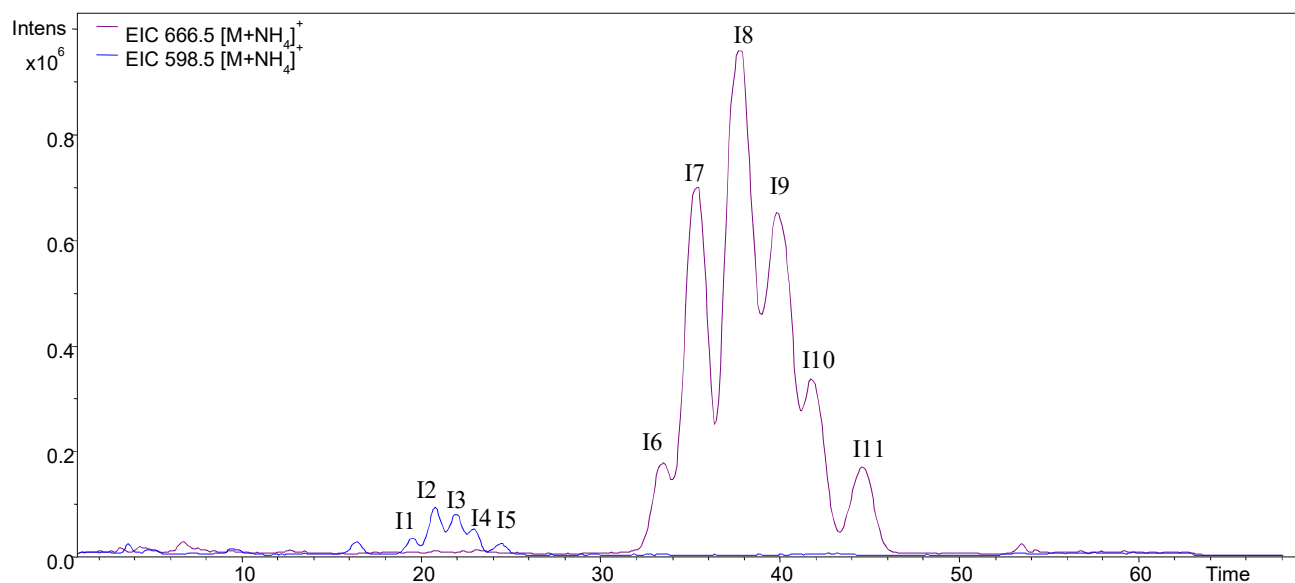
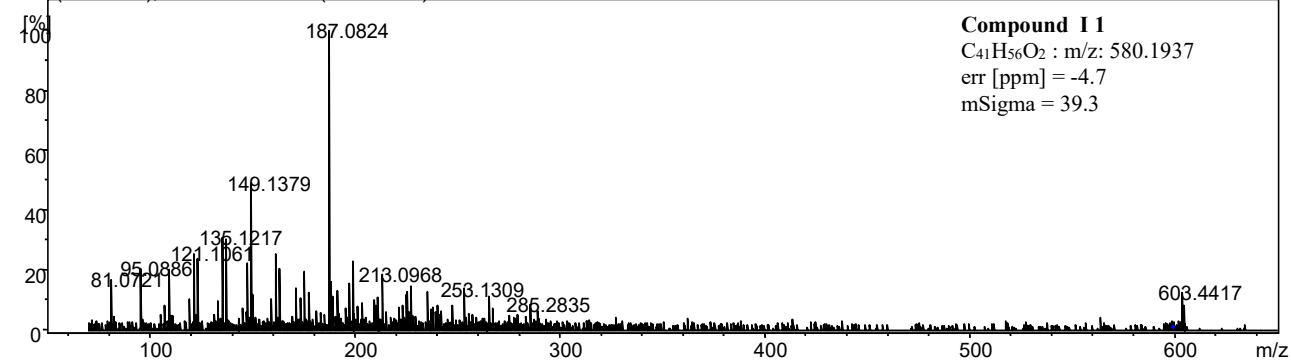


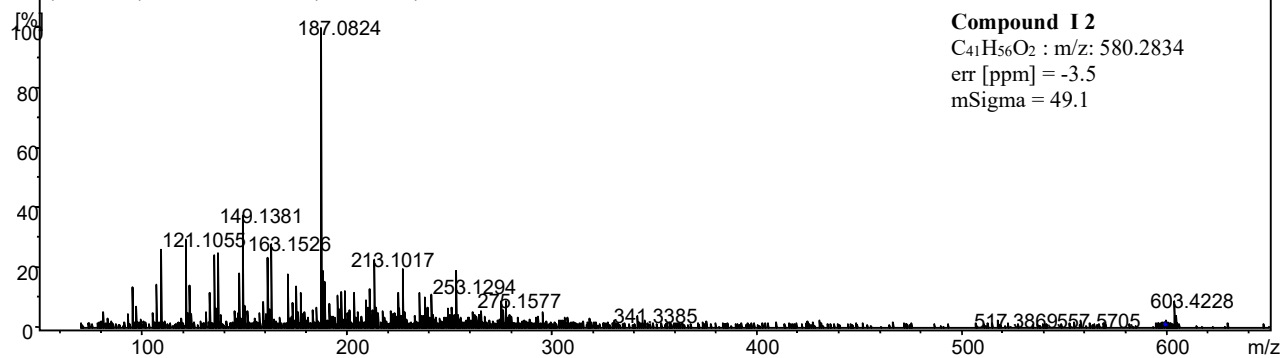
Figure S1 supplementary materials, chromatograms of two cluster peak represented for menaquinone-6 (I1-I5) and menaquinone-7 (I6-I11). Below was presented QTOF MS/MS spectrum of each identified peaks from I1 to I11



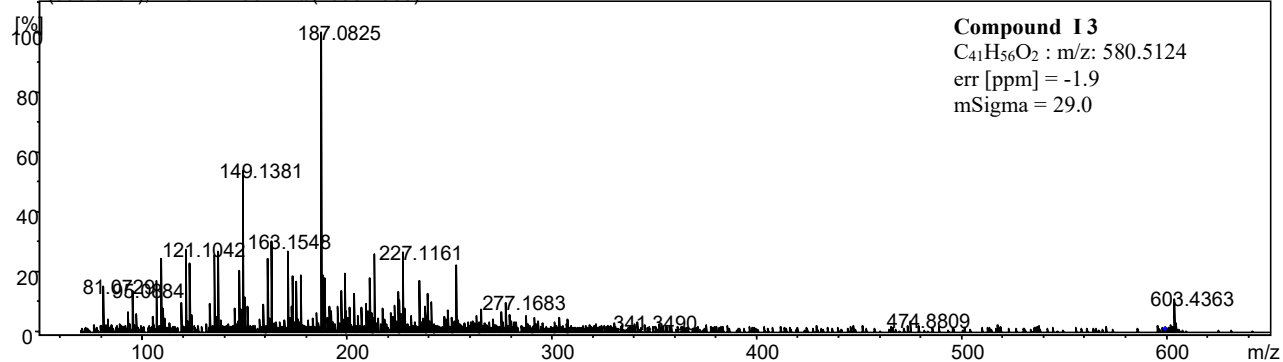
+MS2(599.0134), 19.38-19.69min #(1152-1170)



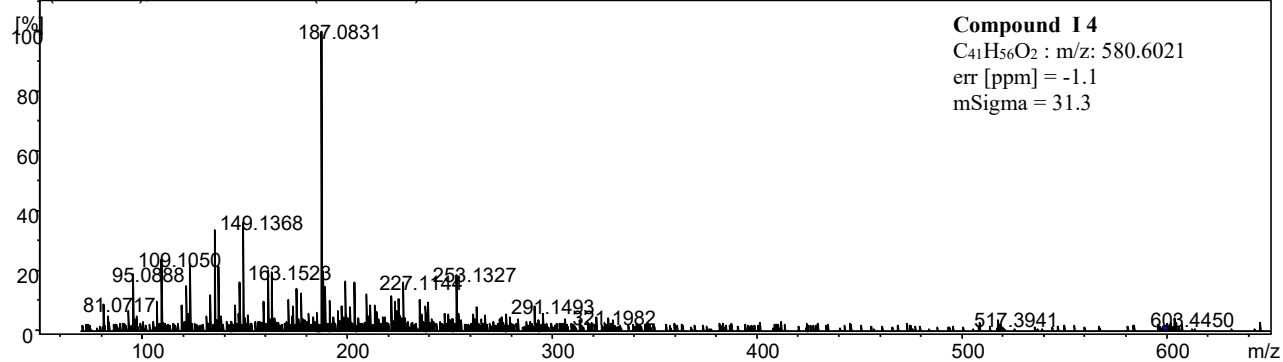
+MS2(598.9557), 20.66-20.76min #(1228-1234)



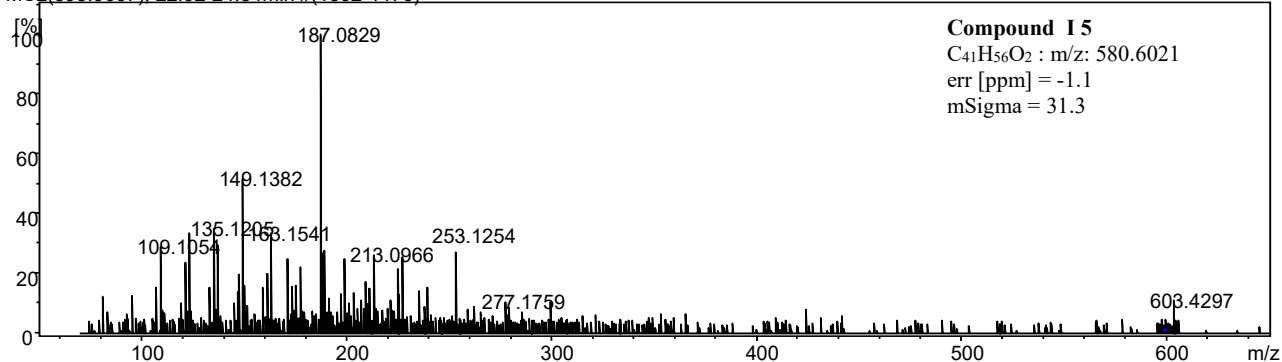
+MS2(598.9461), 21.87-21.98min #(1300-1306)



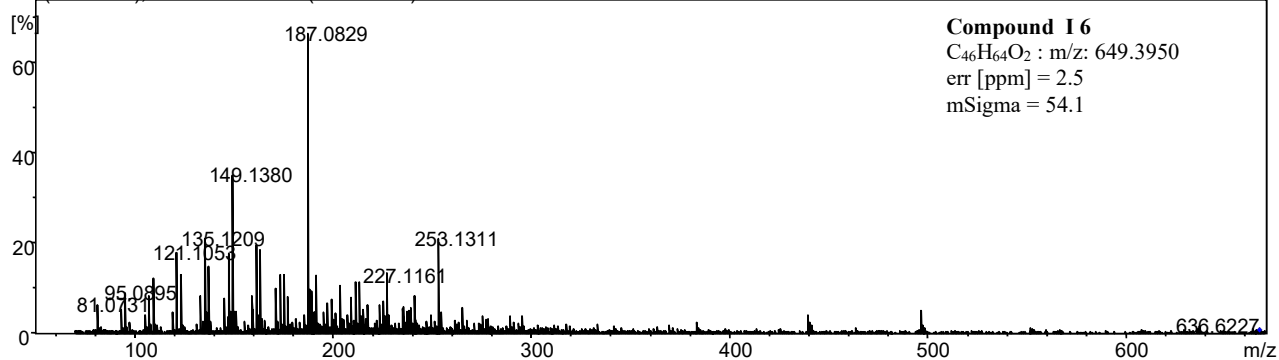
+MS2(598.9519), 22.72-22.82min #(1350-1356)



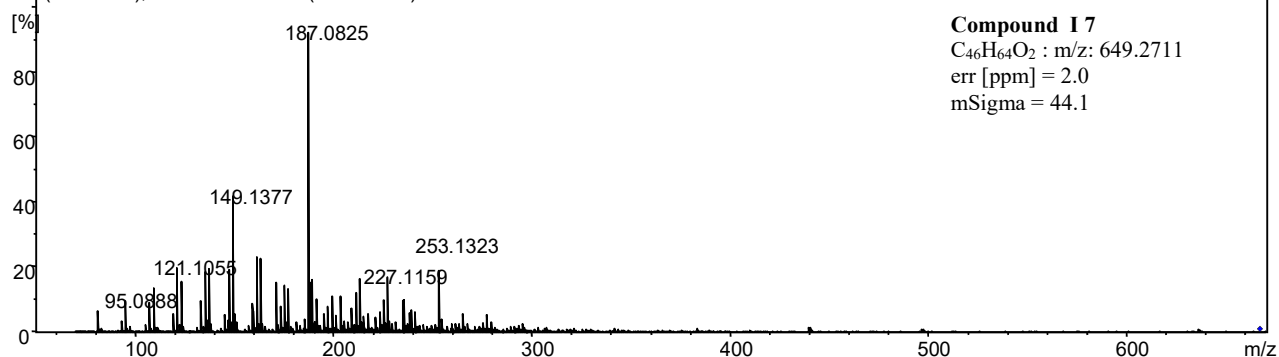
+MS2(598.9667), 22.92-24.84min #(1362-1476)



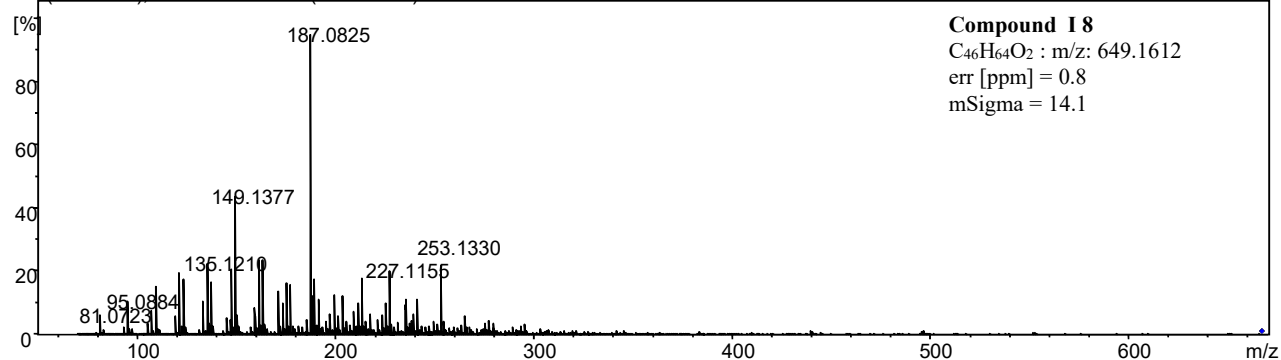
+MS2(666.8336), 33.37-33.57min #(1983-1995)



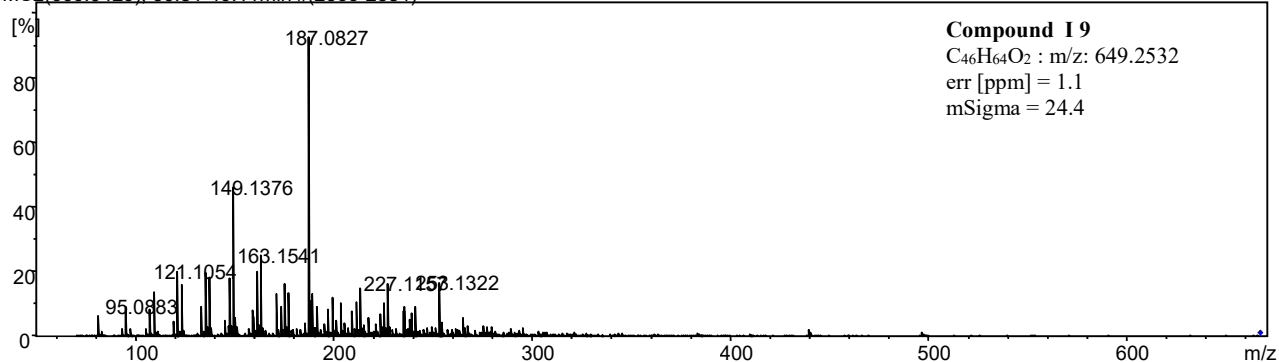
+MS2(666.9598), 35.17-35.37min #(2090-2102)



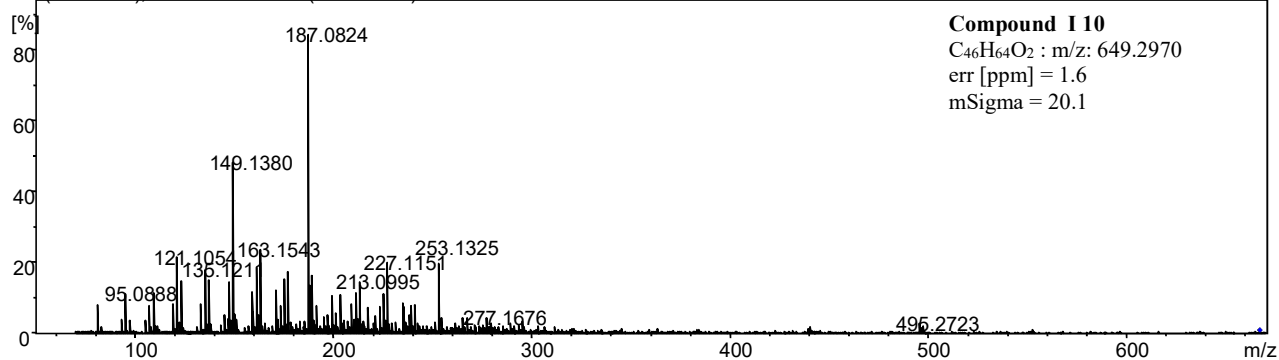
+MS2(666.9622), 37.59-37.69min #(2234-2240)



+MS2(666.9429), 39.81-40.11min #(2366-2384)



+MS2(666.9240), 41.74-41.85min #(2481-2487)



+MS2(666.7833), 44.47-44.87min #(2643-2667)

