

Figure S1. Total ion chromatography (upper) and tandem mass spectrometry (MS-MS) spectrum (lower) of dentatin by a positive model

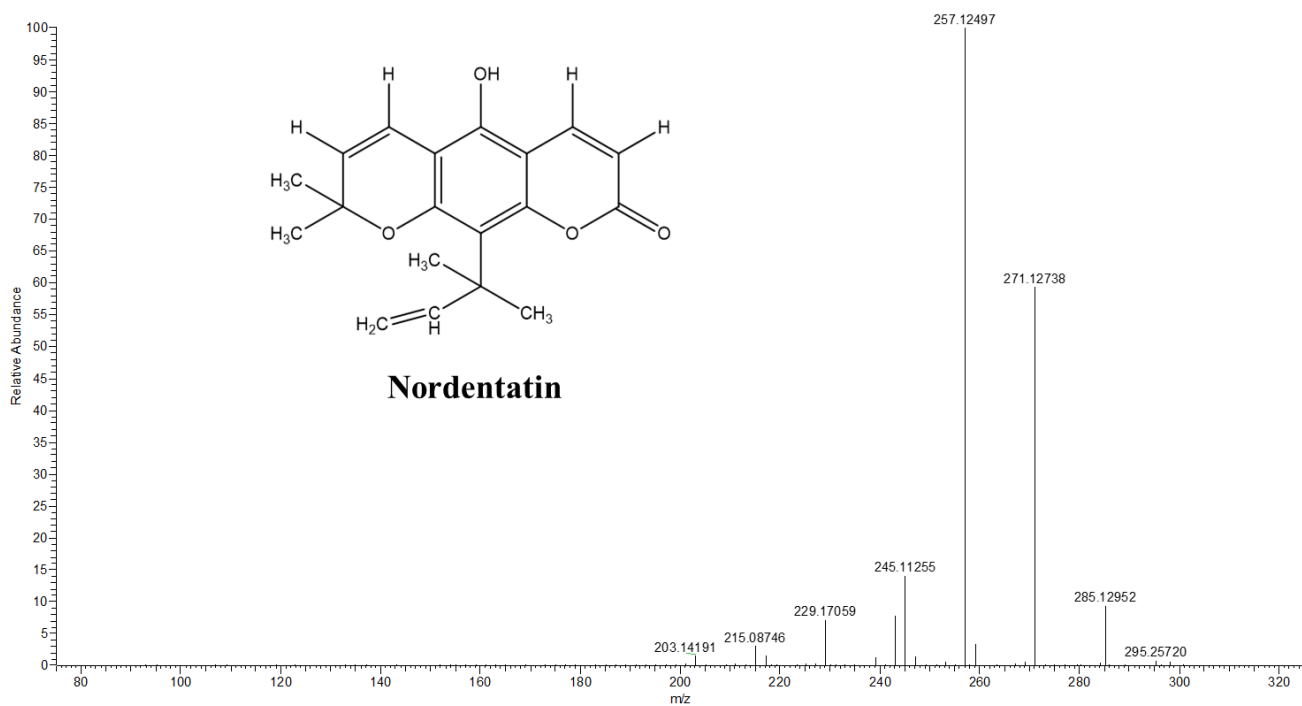
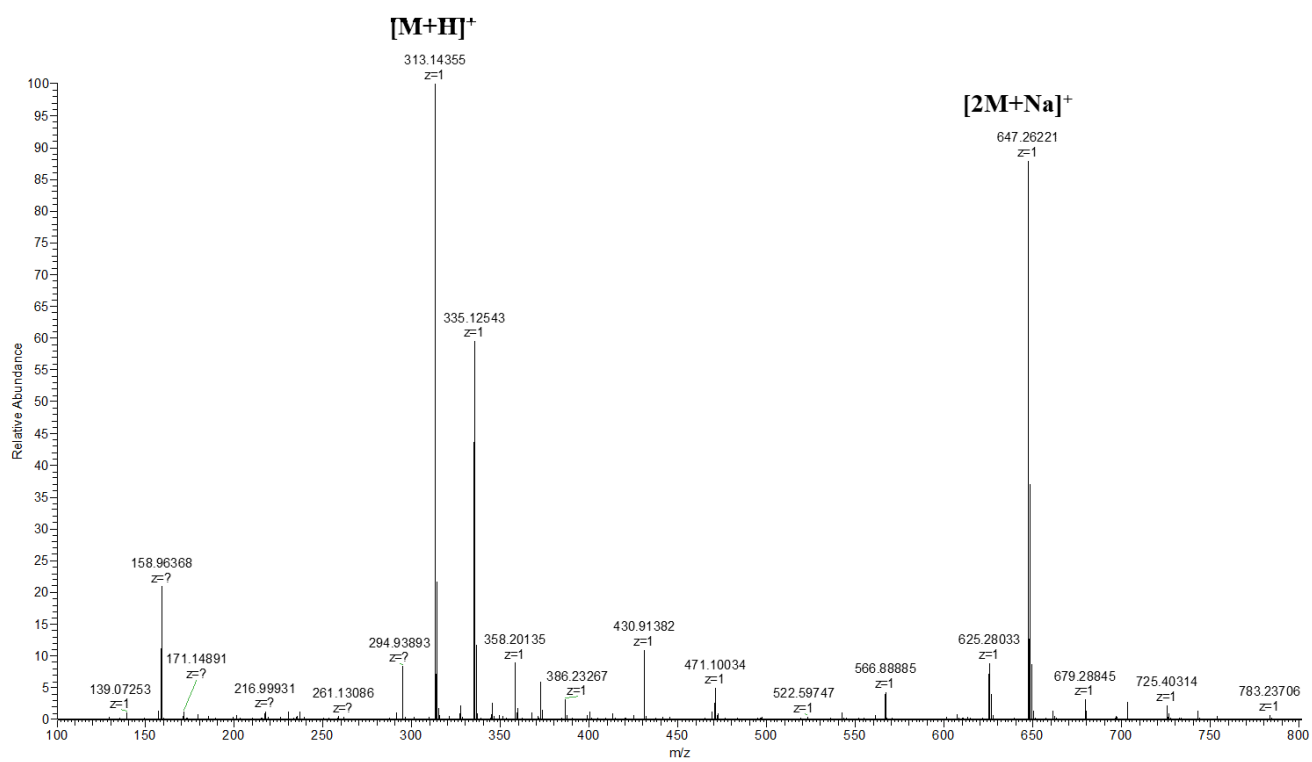


Figure S2. Total ion chromatography (upper) and tandem mass spectrometry (MS-MS) spectrum (lower) of nordentatin by a positive model

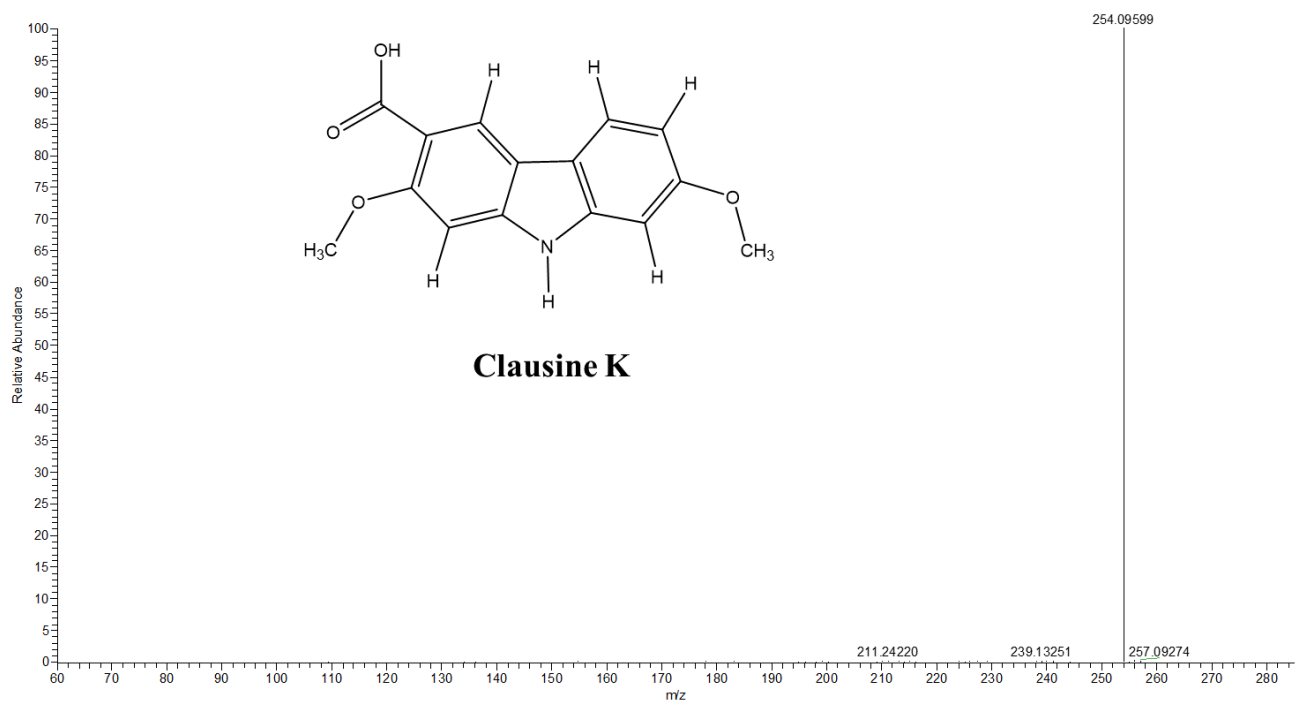
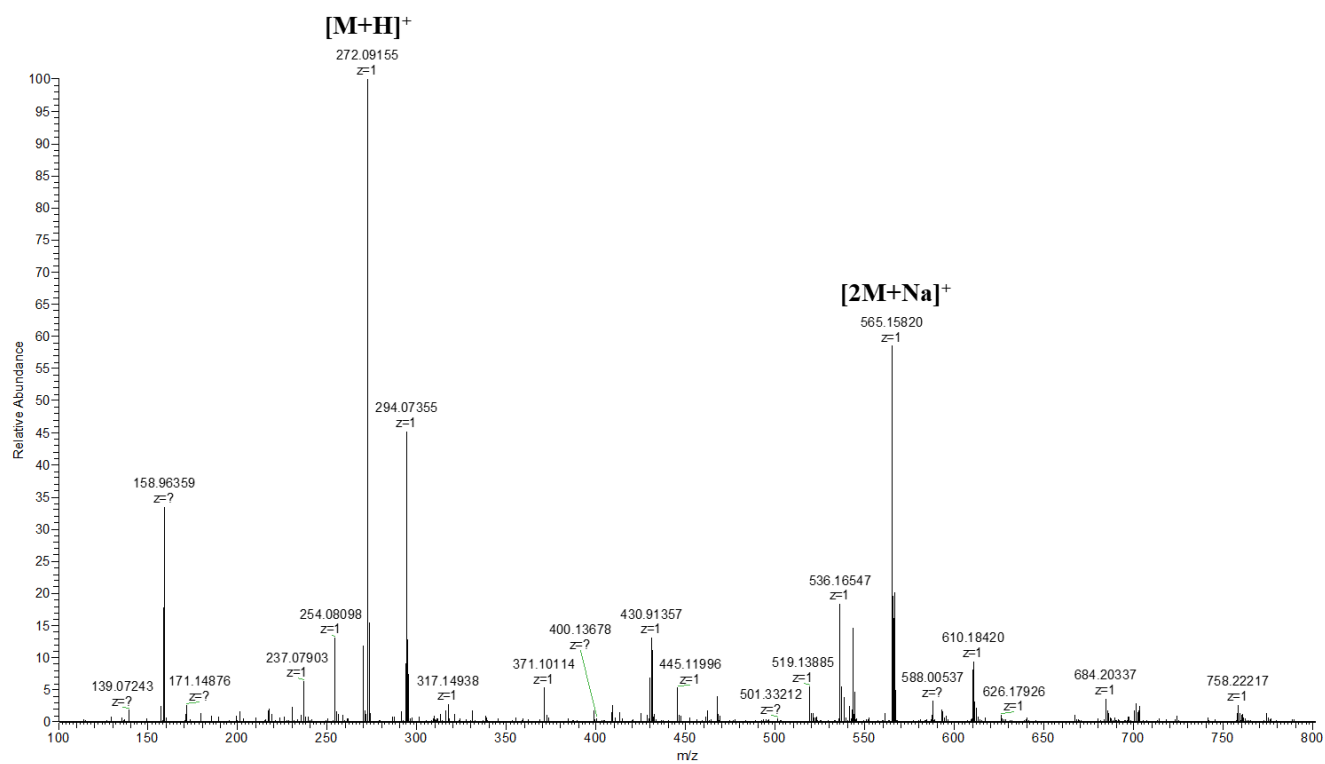


Figure S3. Total ion chromatography (upper) and tandem mass spectrometry (MS-MS) spectrum (lower) of clausine K by a positive model

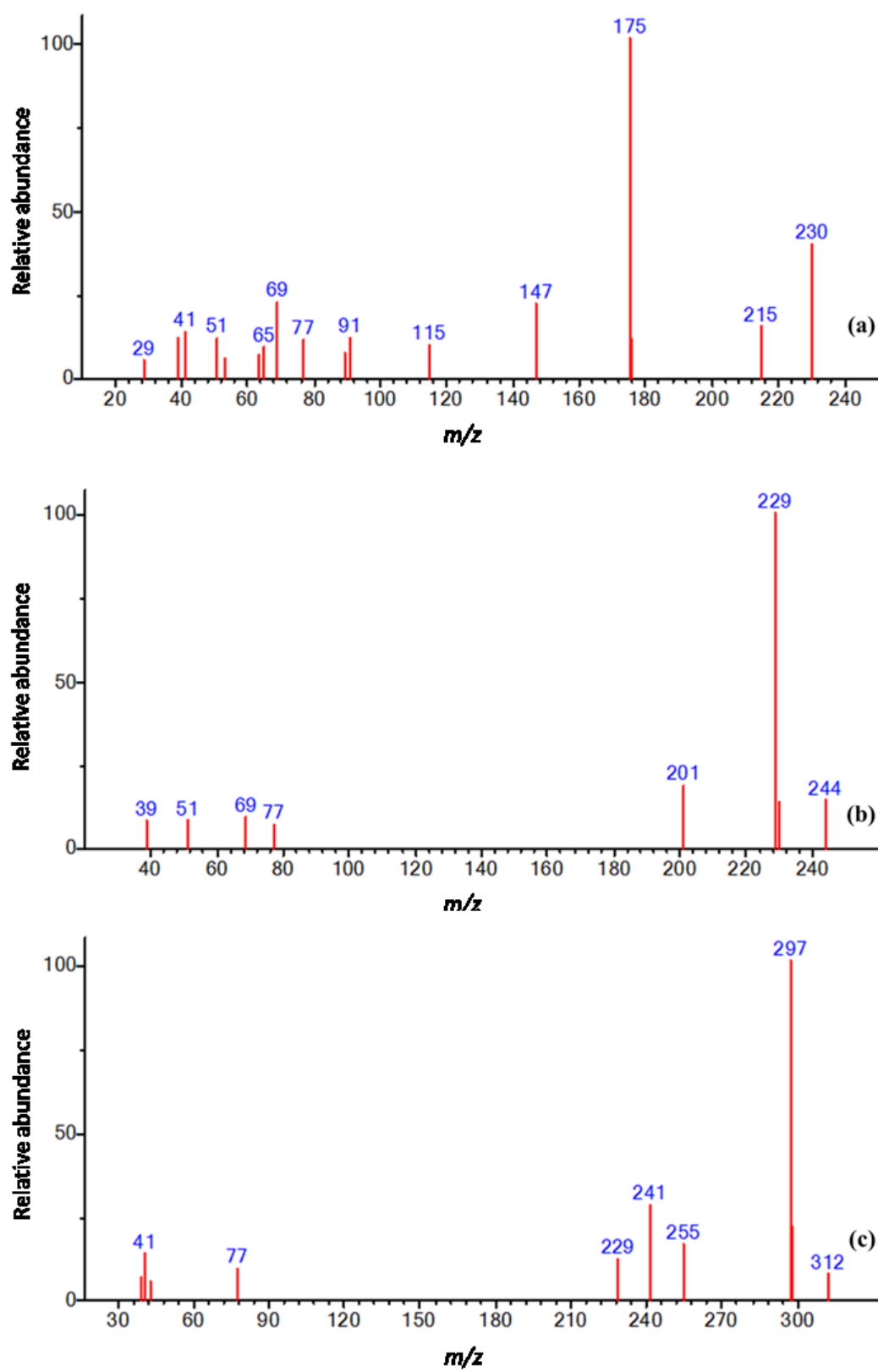


Figure S4. GC-MS fragmentation patterns of UC1 (a), UC2 (b), and UC3 (c) detected in *Clausena indica* roots