

Morphology-dependent catalytic activity of Ru/CeO₂ in dry reforming of methane

Lulu He ¹, Yuanhang Ren ¹, Yingyi Fu ¹, Bin Yue ^{1,*} Shik Chi Edman Tsang,² and Heyong He ^{1,*}

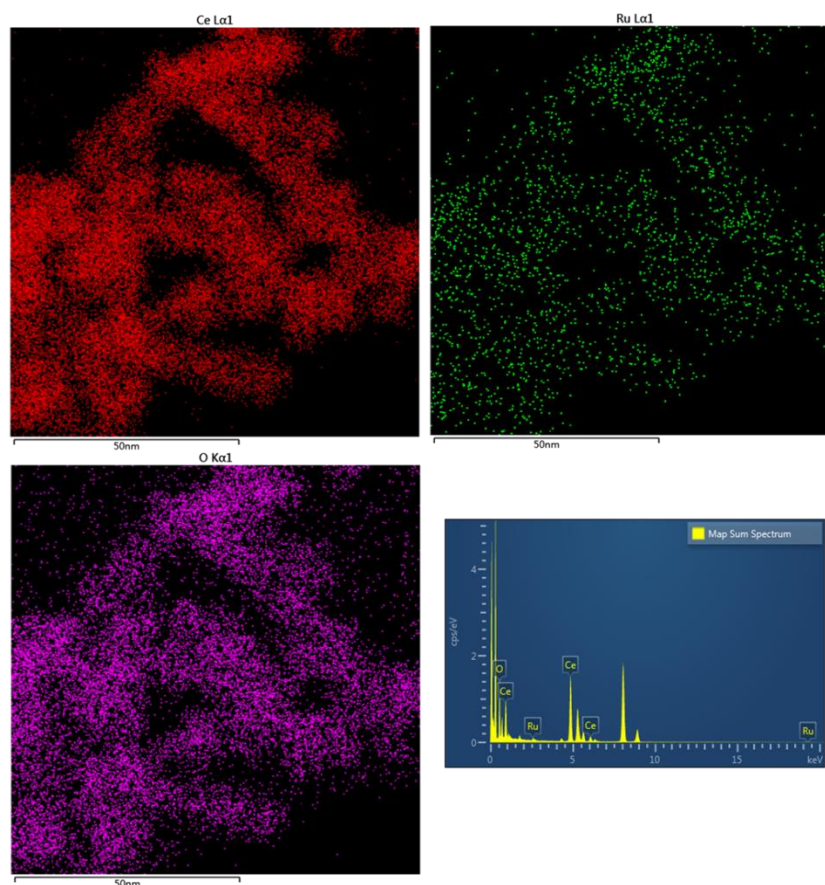


Figure S1: Ce, Ru and O mapping with EDS spectrum of the Ru/CeO₂-NRs catalyst.

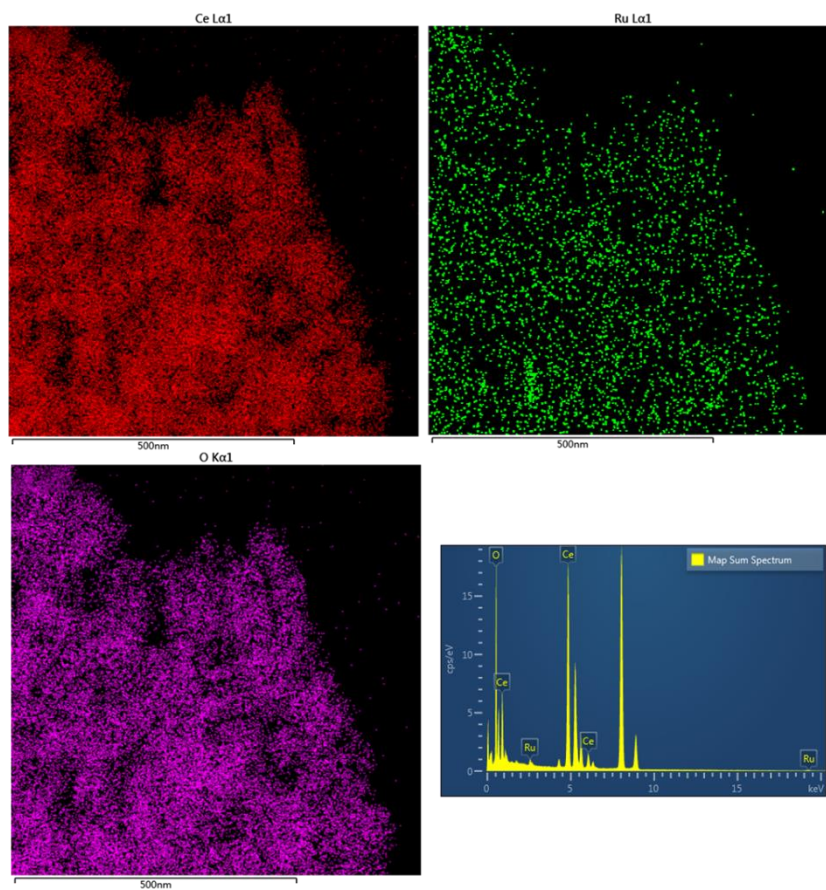


Figure S2: Ce, Ru and O mapping with EDS spectrum of the Ru/CeO₂-NCs catalyst.

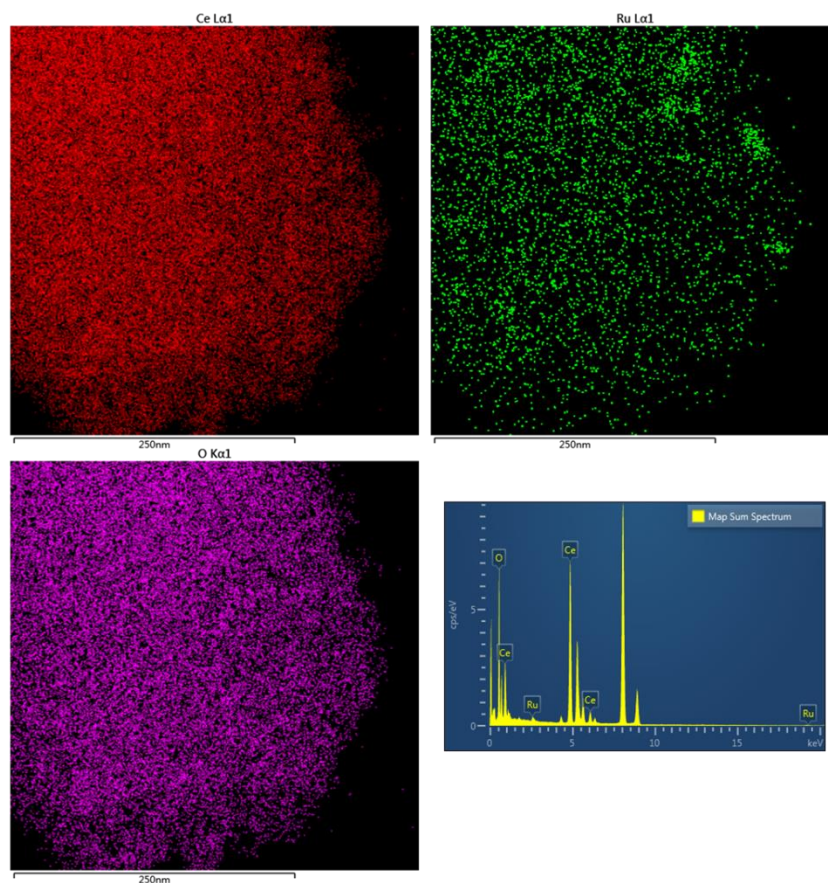


Figure S3: Ce, Ru and O mapping with EDS spectrum of the NRu/CeO₂-NPs catalyst.