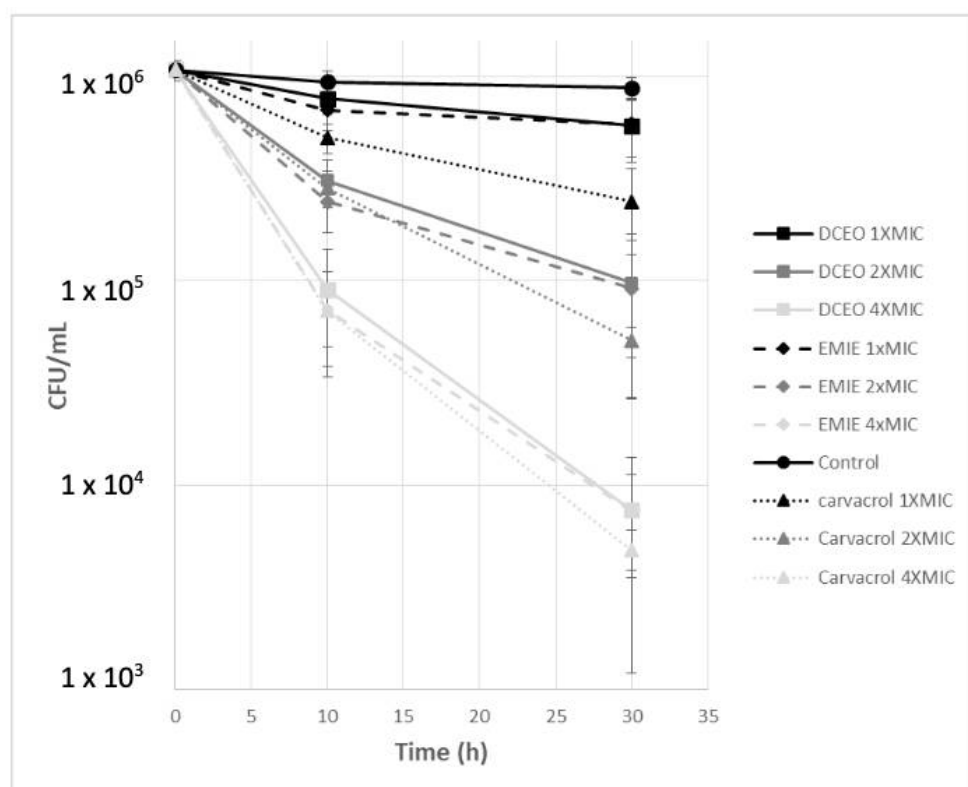


Supplementary Data

Figure 1. Kinetics of bactericidal effect. Rapid CFU decrease with the DCEO and its active molecules against stationary phase grown cells of *C. jejuni* F38011 using time kill assays for 30 minutes with concentrations corresponding to MIC, 2x MIC, and 4x MIC. Control cells were treated with DMSO and carvacrol was used as a positive standard. A: effect of the entire DCEO and EMIE. B: effect of Oxy-Fr and elemicin. Data are the means \pm SEM from three independent experiments.

A



B

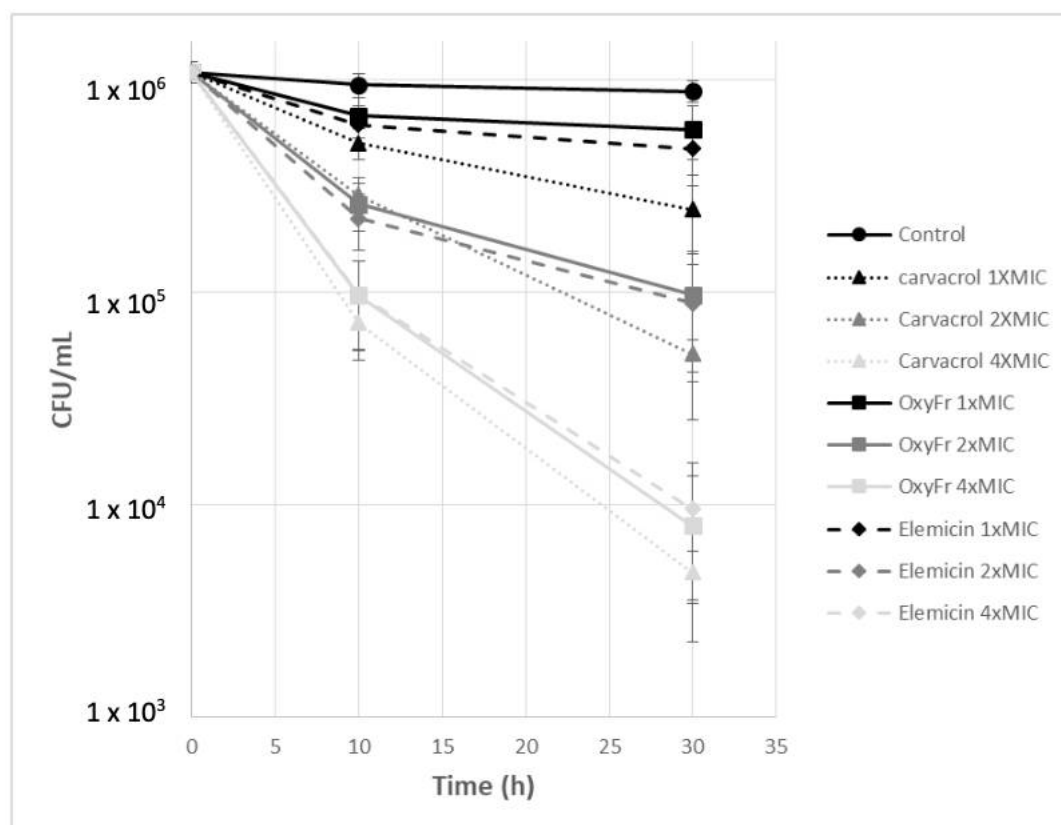
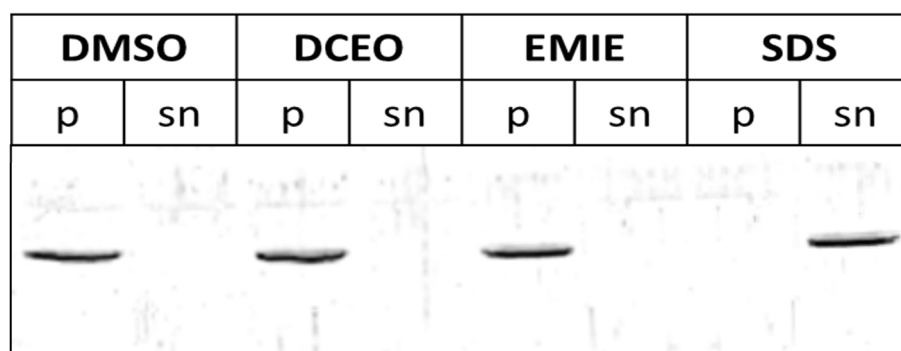
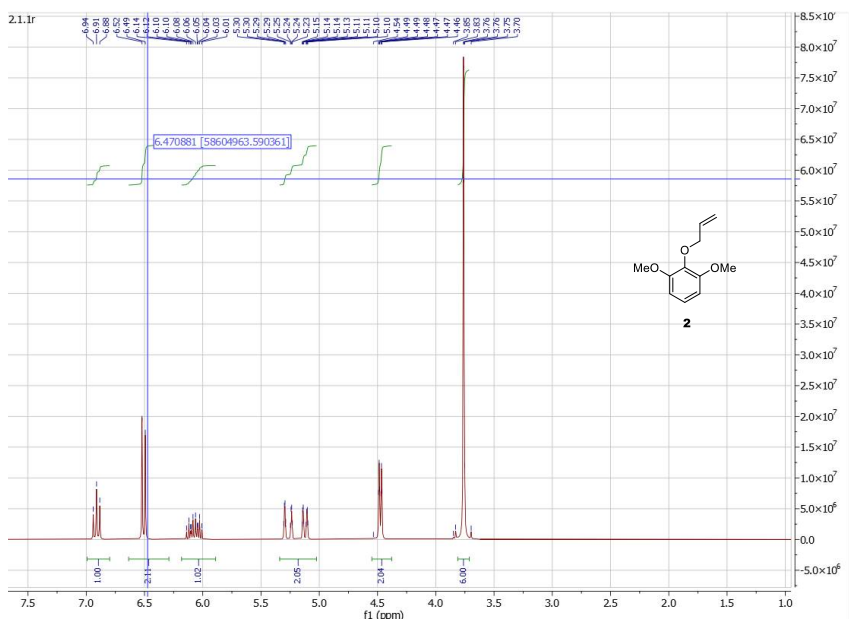
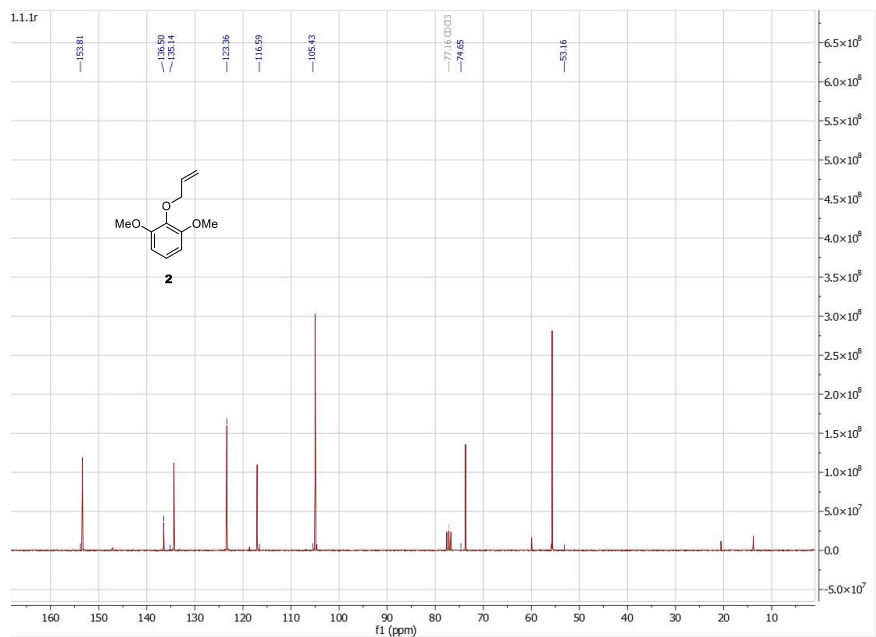
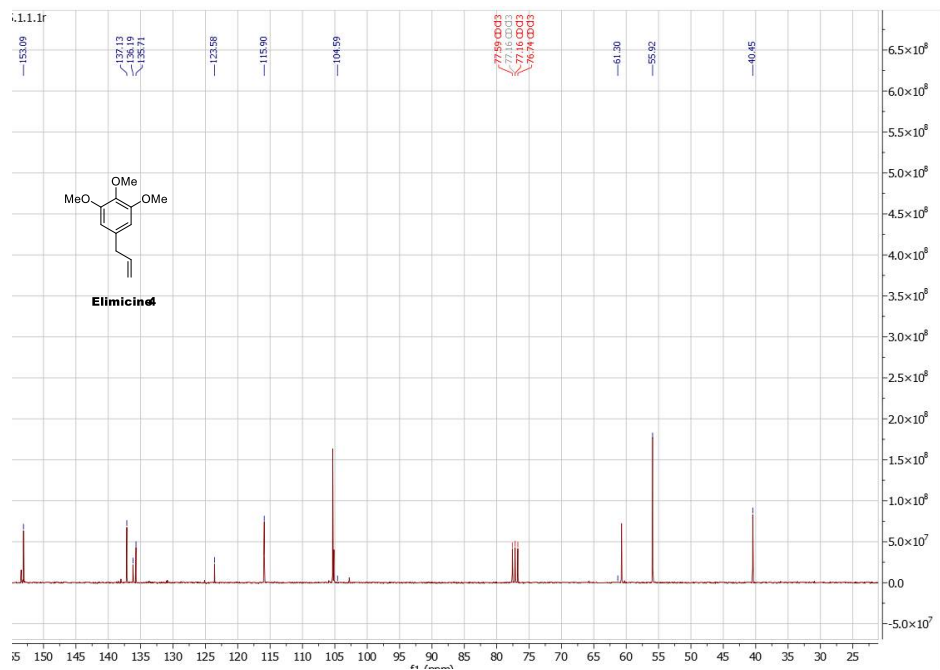
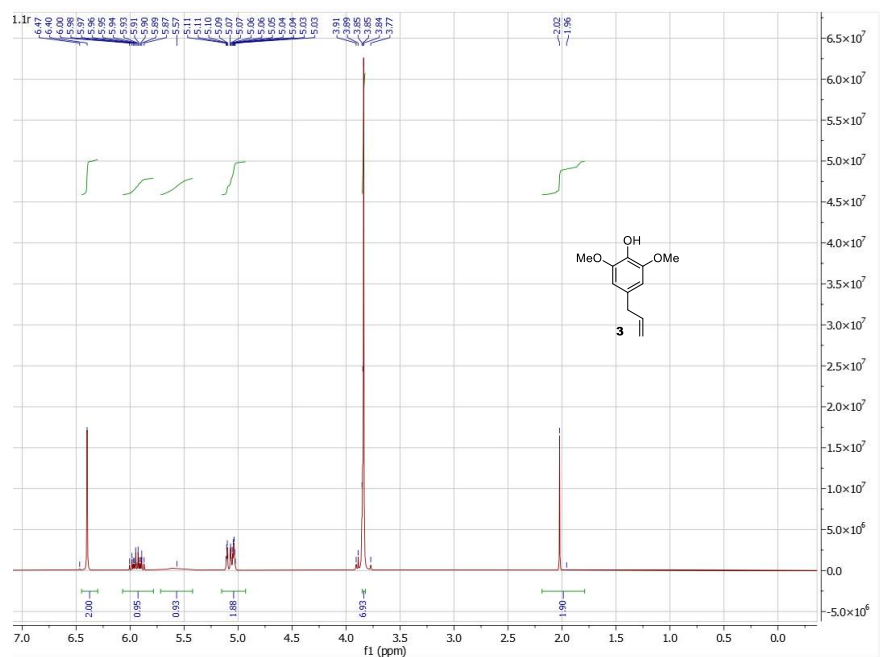
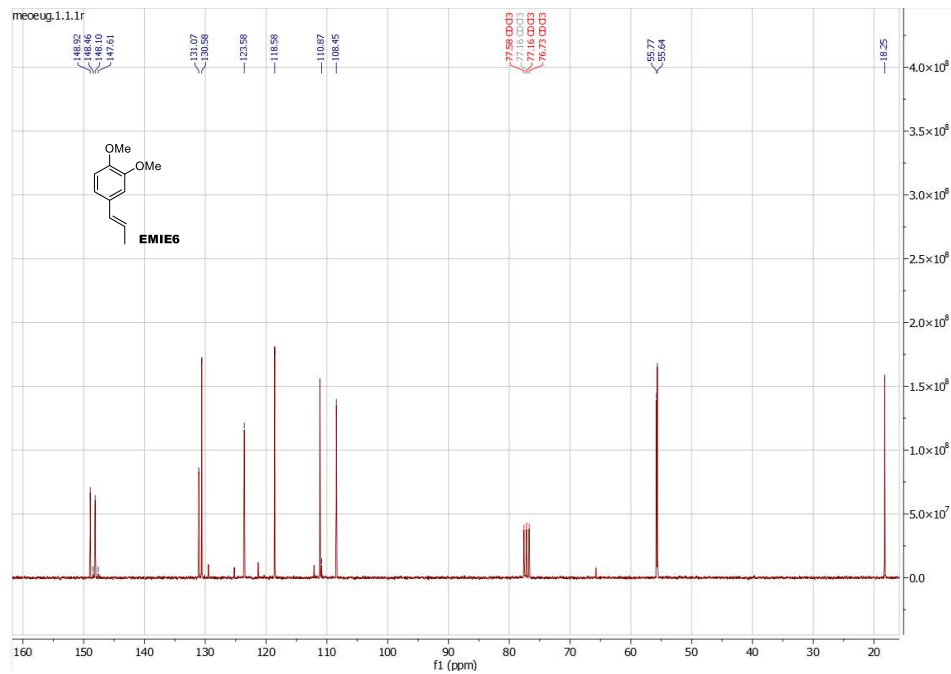
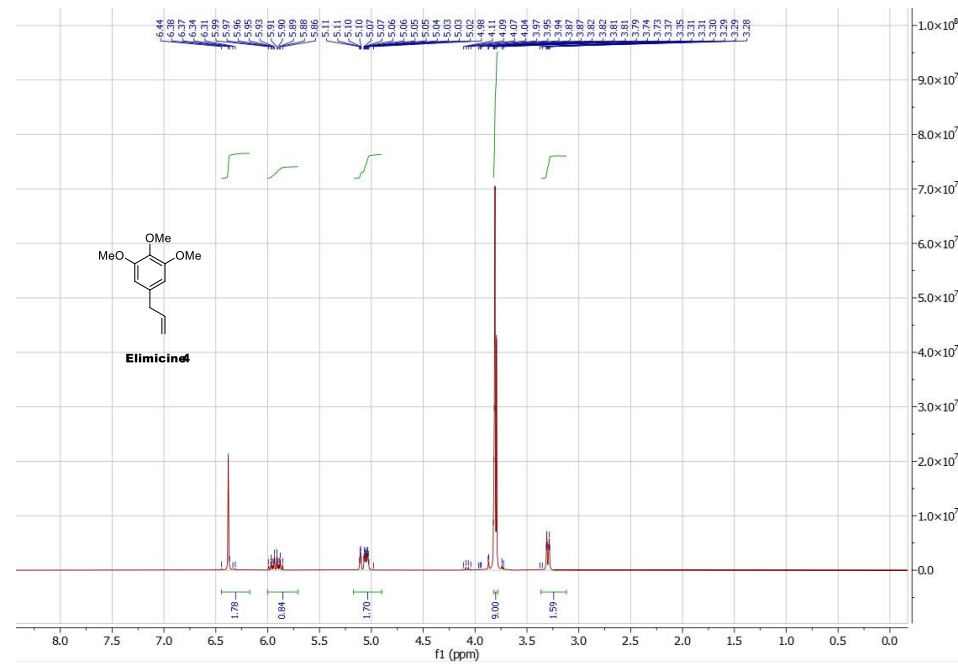


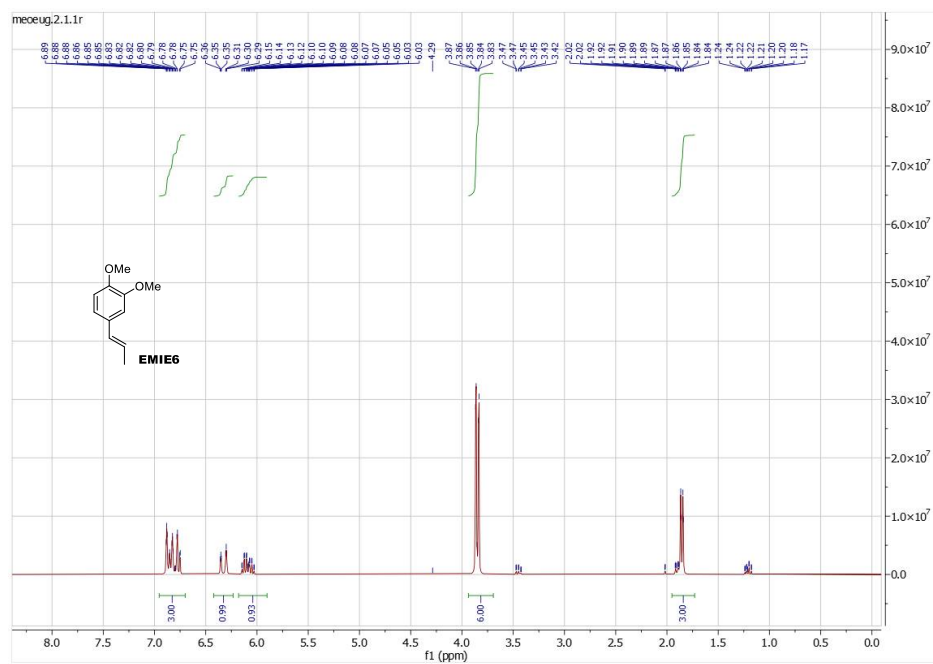
Figure S2: Outer membrane protein detection. Immunodetection using Omp50 outer membrane protein specific antibodies on *Campylobacter* cells treated with 4xMIC DCEO and 4xMIC EMIE. DMSO and SDS were used as negative and positive standards, respectively.











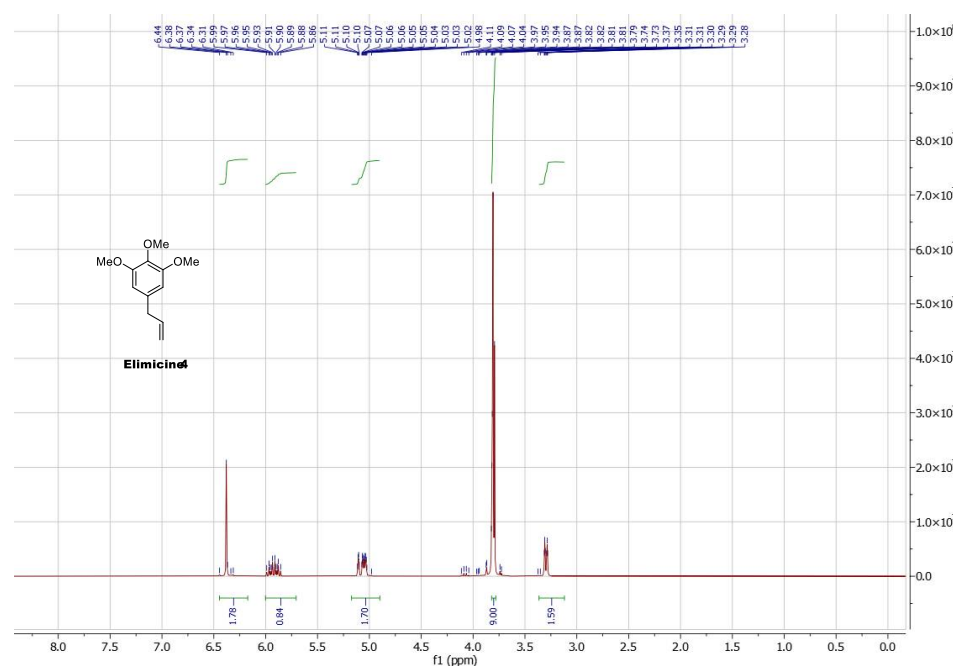


Table 1. Effect of compounds on cell integrity; Optical Density at 600 nm after cell treatment with DCEO, EMIE, elemicin, and carvacrol at 4 x MIC. SDS: Sodium Dodecyl Sulphate; TCA: Tri chloroacetic acid. Data are the means +/- SEM from three independent experiments.

Time (min)	DMSO	DCEO 4MIC	EMIE 4MIC	Elemicin 4MIC	Carvacrol 4MIC	SDS 0,01%	TCA 0,15%
0	0.497±0.012	0.502±0.011	0.501±0.017	0.497±0.014	0.499±0.021	0.498±0.023	0,494±0.017
3	0.504±0.011	0.498±0.012	0.509±0.013	0.498±0.019	0.474±0.012	0.202±0.042	0.078±0.031
10	0.502±0.014	0.501±0.014	0.494±0.016	0.501±0.013	0.438±0.014	0.082±0.028	0.065±0.024
30	0.492±0.018	0.492±0.019	0.491±0.021	0.494±0.024	0.403±0.017	0.062±0.011	0.054±0.015