

Sample name: **MP0008**

Summary formula: **C<sub>11</sub>H<sub>16</sub>ClFN<sub>2</sub>**

LC:

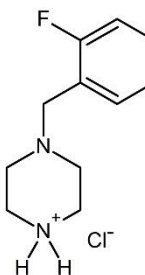
**Agilent 1200 HPLC System**

Chromatographic column: Phenomenex Luna Omega PS C18, 150 x 4.6 mm, 3µm

Flow rate: 1 mL/min

Injection volume: 2 µL of aqueous sample (c = 50 µg/mL)

Gradient elution: 0 – 10 min 100 – 35% 30 mM ammonium acetate (0 – 65% ACN)  
10 – 11 min 35 – 0% 30 mM ammonium acetate (65 – 100% ACN)



MS:

**Agilent 6224 Accurate-Mass TOF mass spectrometer**

MS conditions: APCI positive, N<sub>2</sub> flow 7 L/min, gas temperature 325°C, nebulizer 45 psig, vaporizer 200°C, fragmentor 20 V

**[C<sub>11</sub>H<sub>16</sub>FN<sub>2</sub>]<sup>+</sup> = 195.1292**

