

Supplementary Data

Chemical compounds identified by GNPS hits

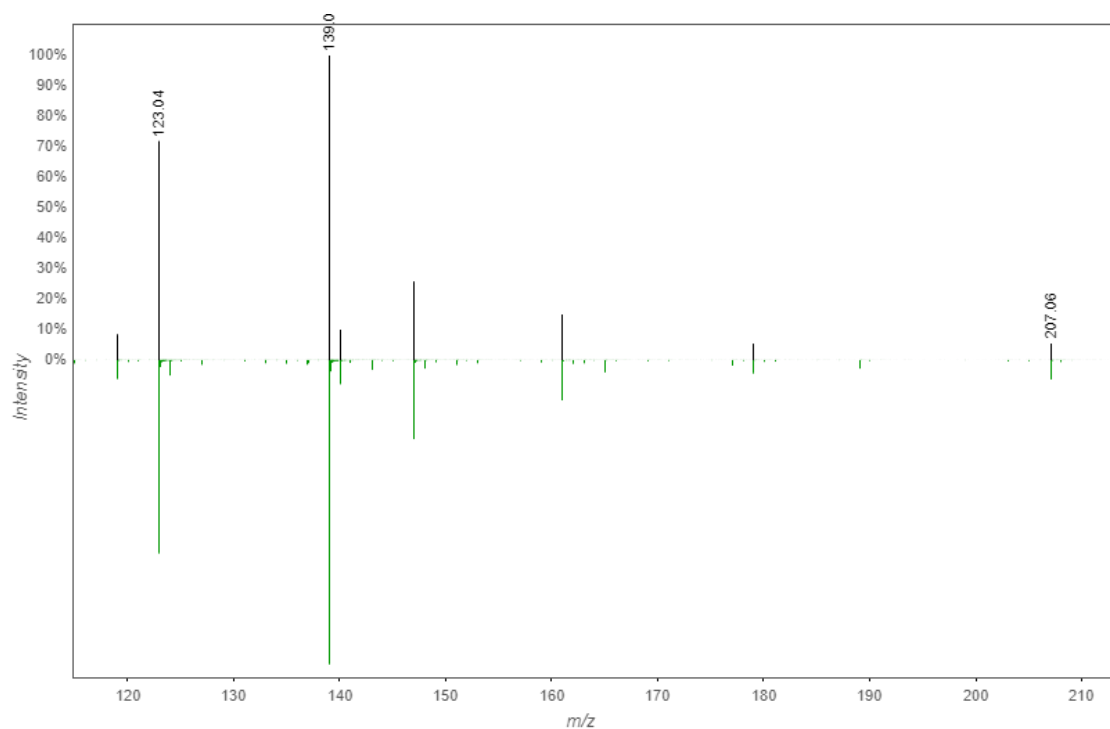


Fig S1. MS/MS match between GNPS database (green) and *Euterpe oleracea* Mart extract (black) for **1**.

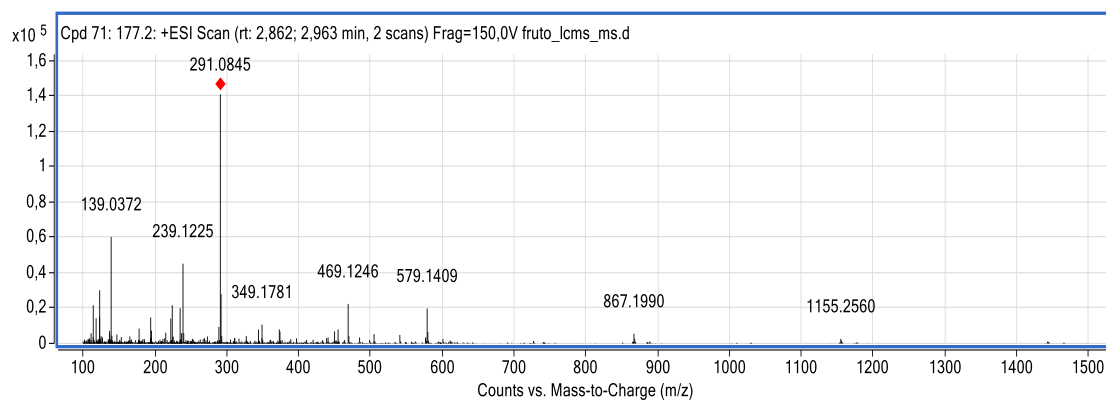


Fig S2. Mass Spectrum of $[M+H]^+$ of **1**.

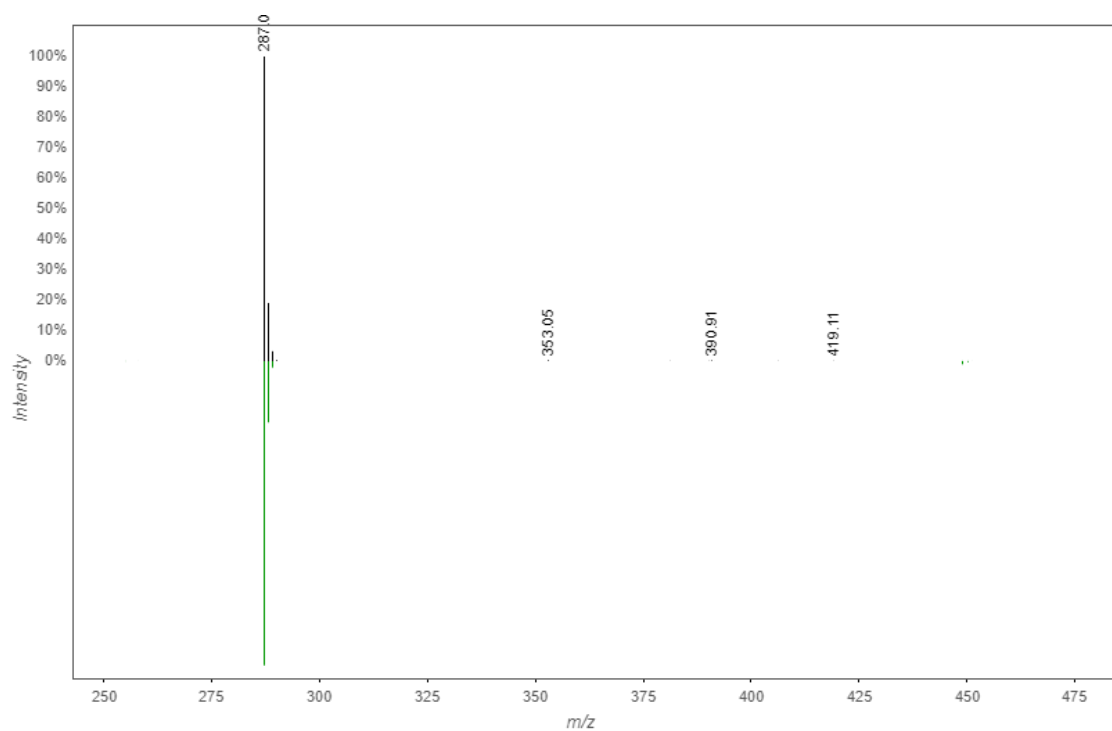


Fig S3. MS/MS match between GNPS database (green) and *Euterpe oleracea* Mart extract (black) for **2**.

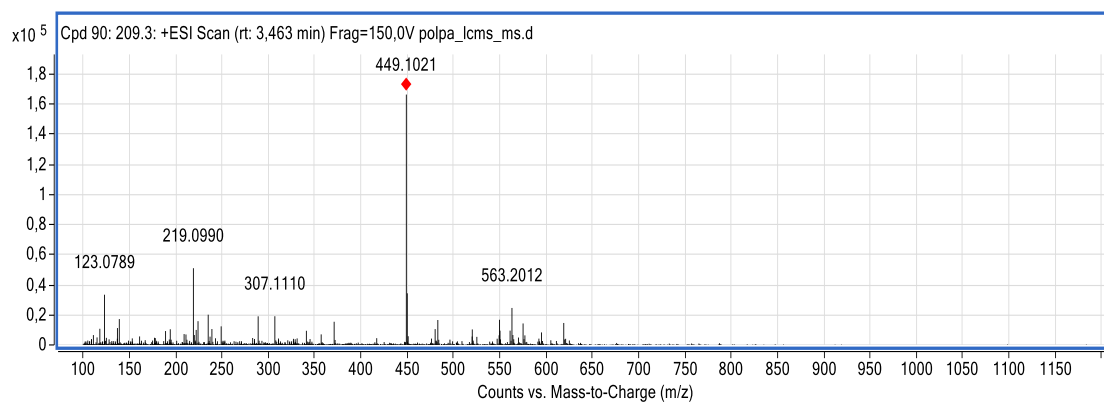


Fig. S4. Mass Spectrum of $[M+H]^+$ of **2**

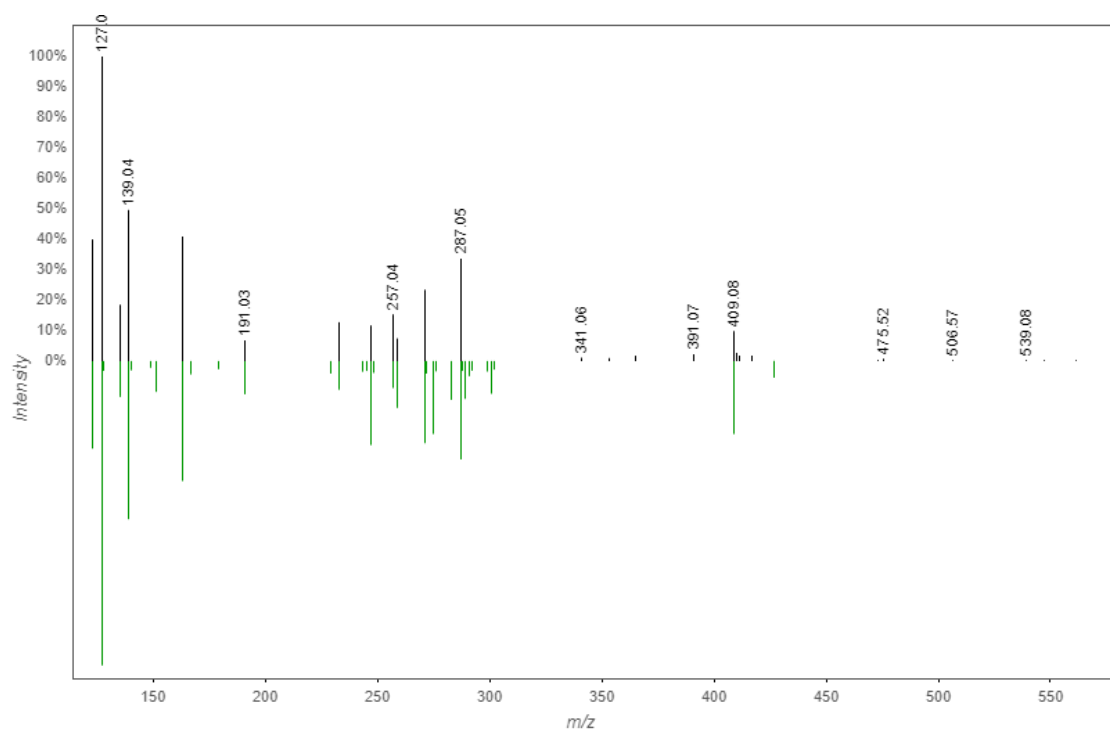


Fig S5. MS/MS match between GNPS database (green) and *Euterpe oleracea* Mart extract (black) for **3**.

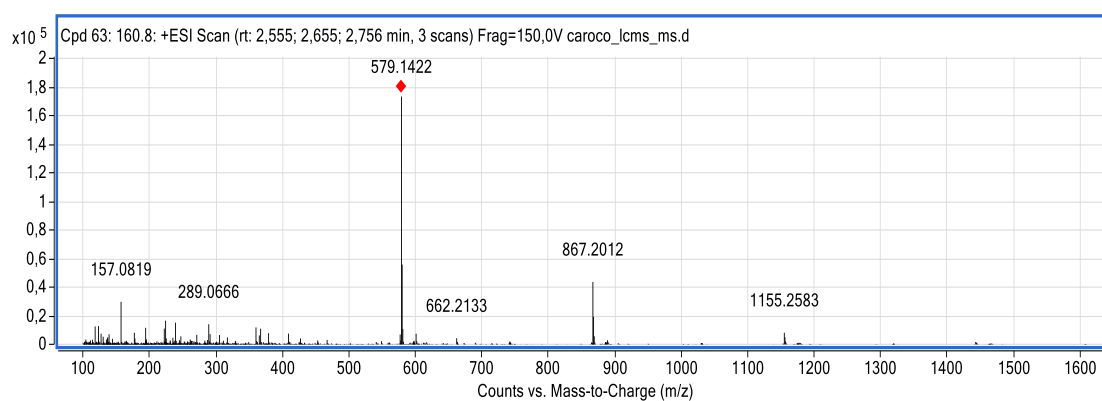


Fig. S6. Mass Spectrum of [M+H]⁺ of **3**

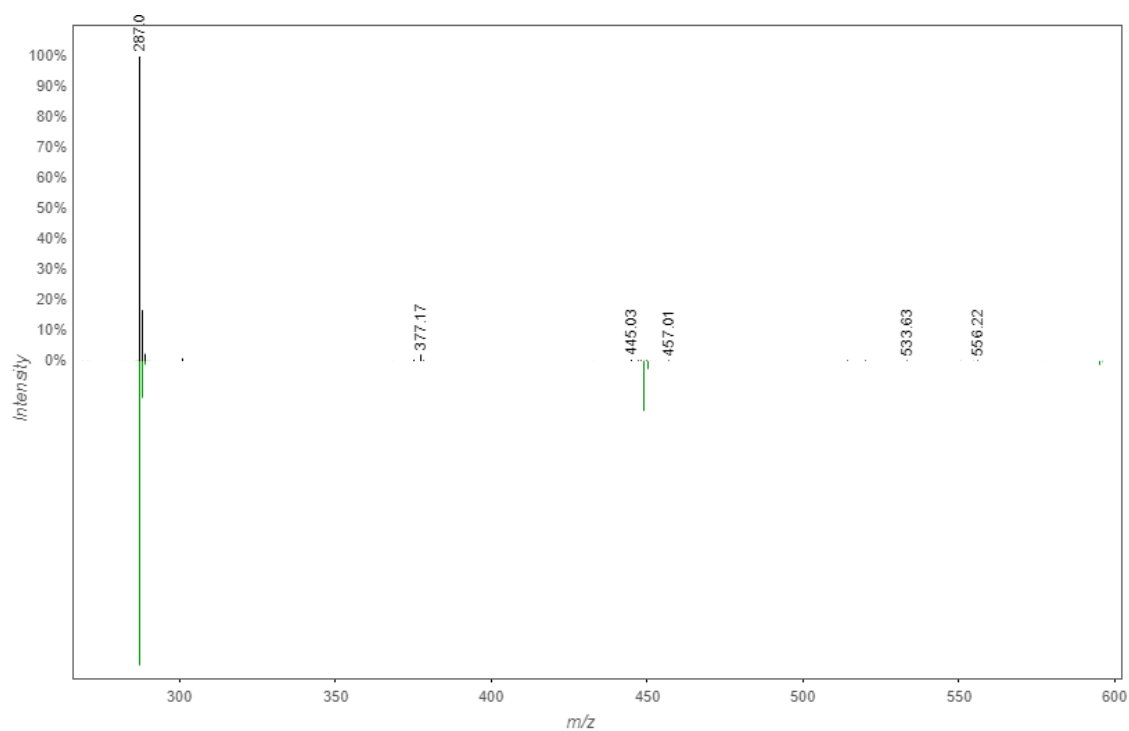


Fig S7. MS/MS match between GNPS database (green) and *Euterpe oleracea* Mart extract (black) for **4**.

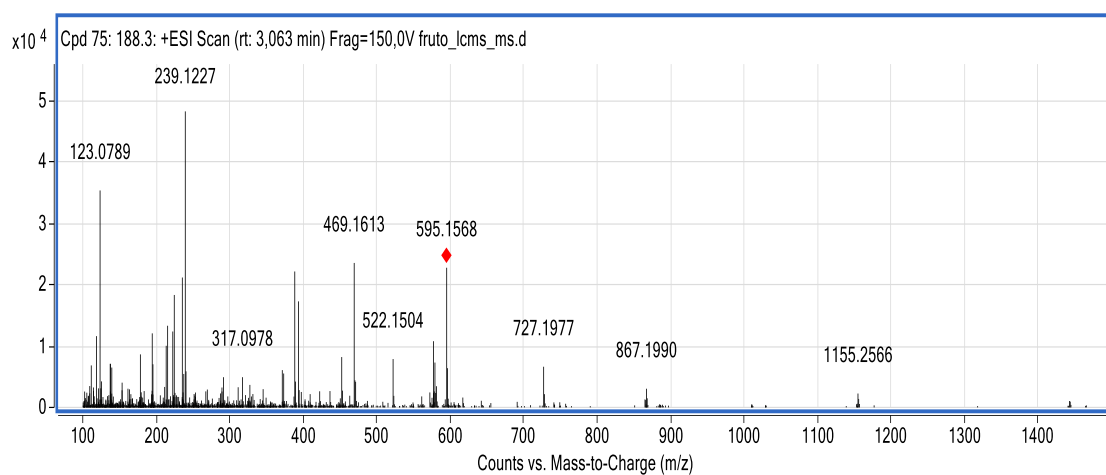


Fig. S8. Mass Spectrum of $[M+H]^+$ of **4**

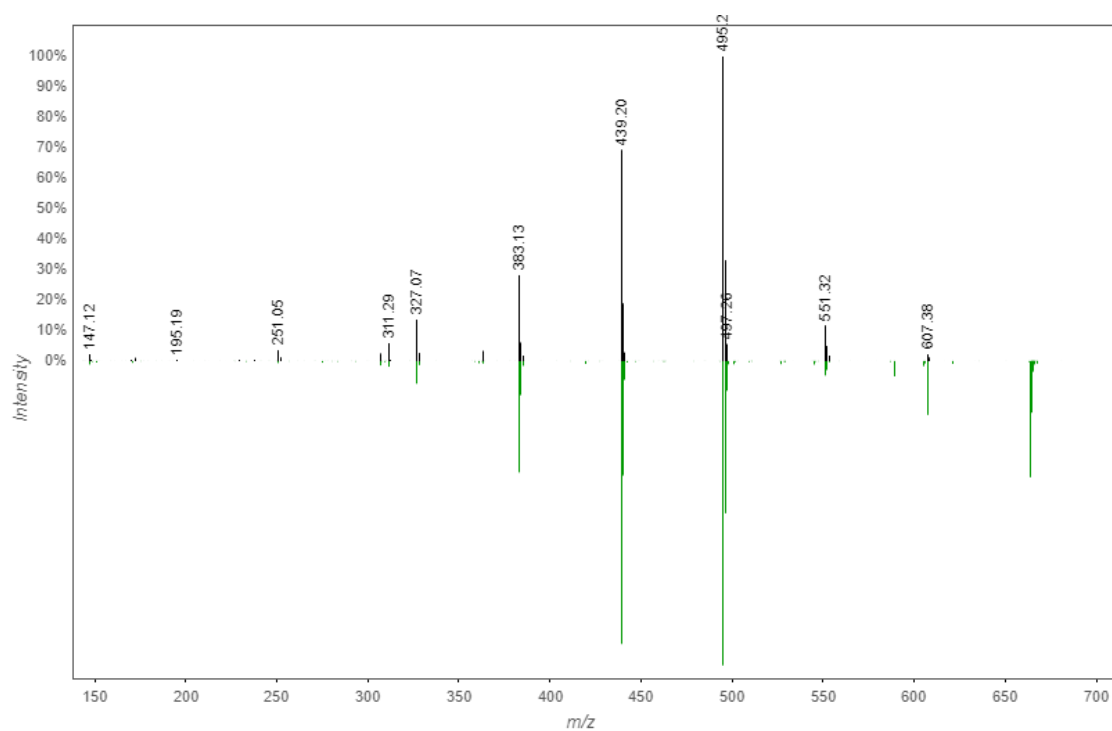


Fig S9. MS/MS match between GNPS database (green) and *Euterpe oleracea* Mart extract (black) for **5**.

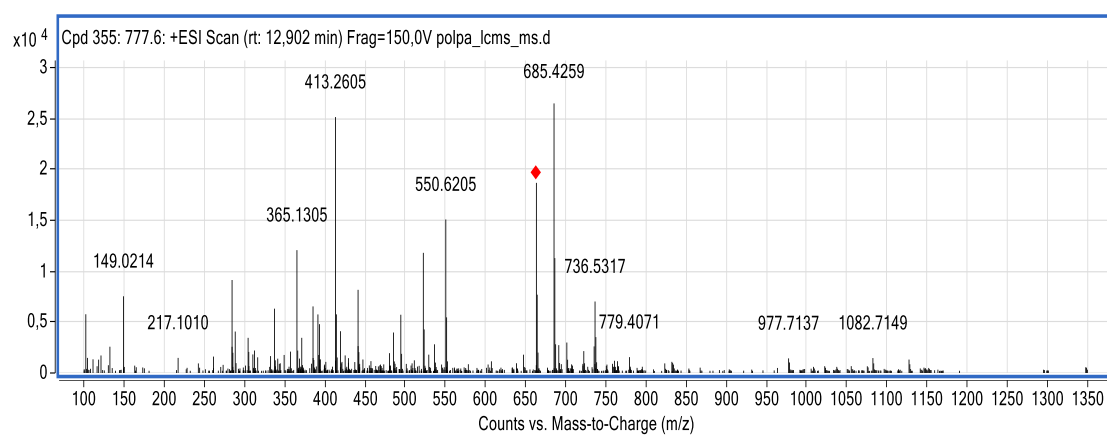


Fig. S10. Mass Spectrum of $[M+H]^+$ of **5**

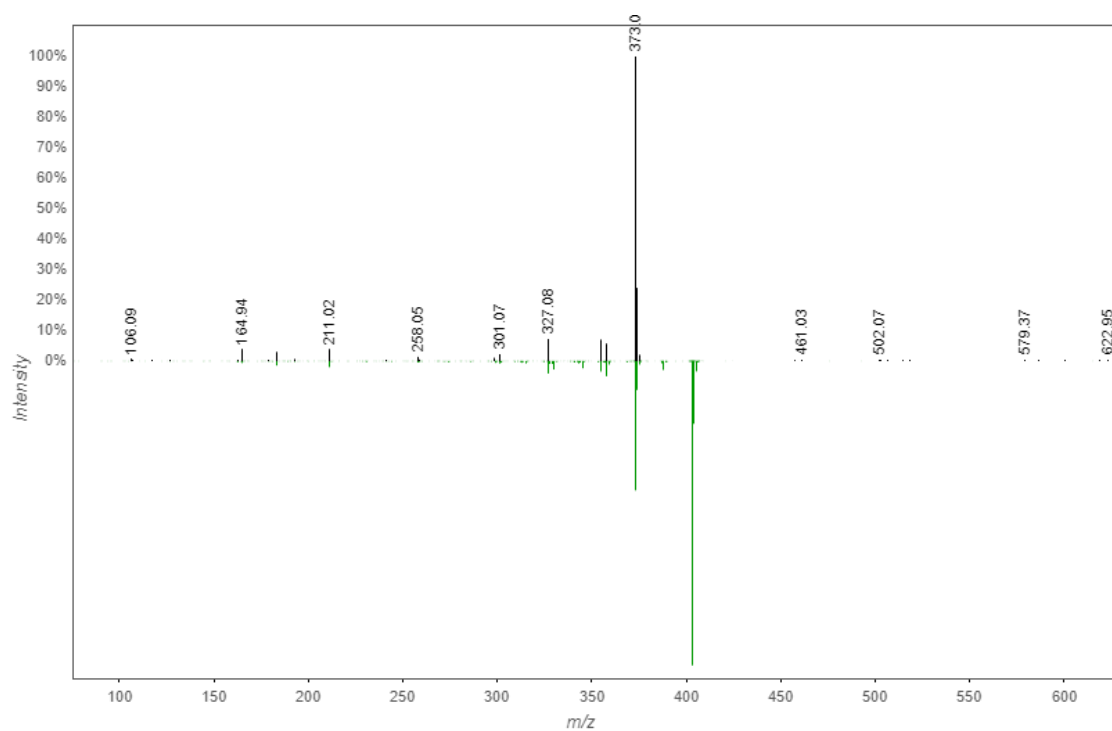


Fig S11. MS/MS match between GNPS database (green) and *Euterpe oleracea* Mart extract (black) for **6**.

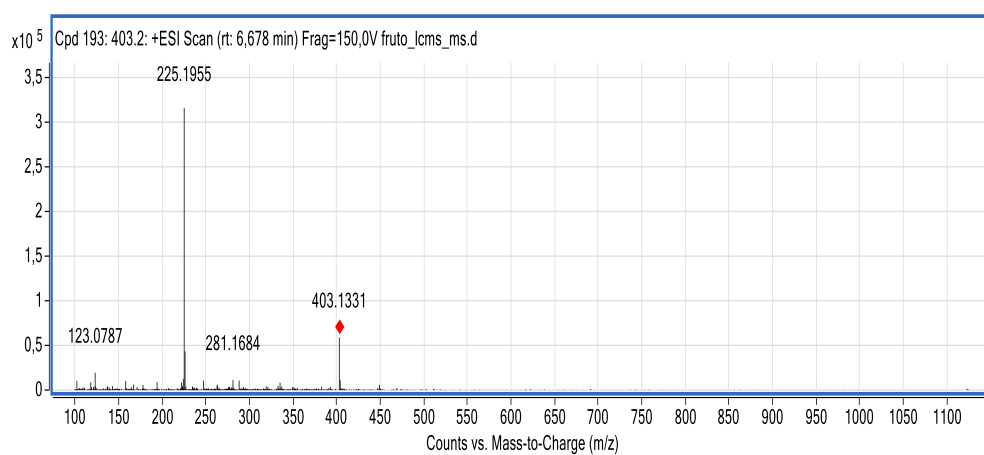


Fig. S12. Mass Spectrum of $[M+H]^+$ of **6**

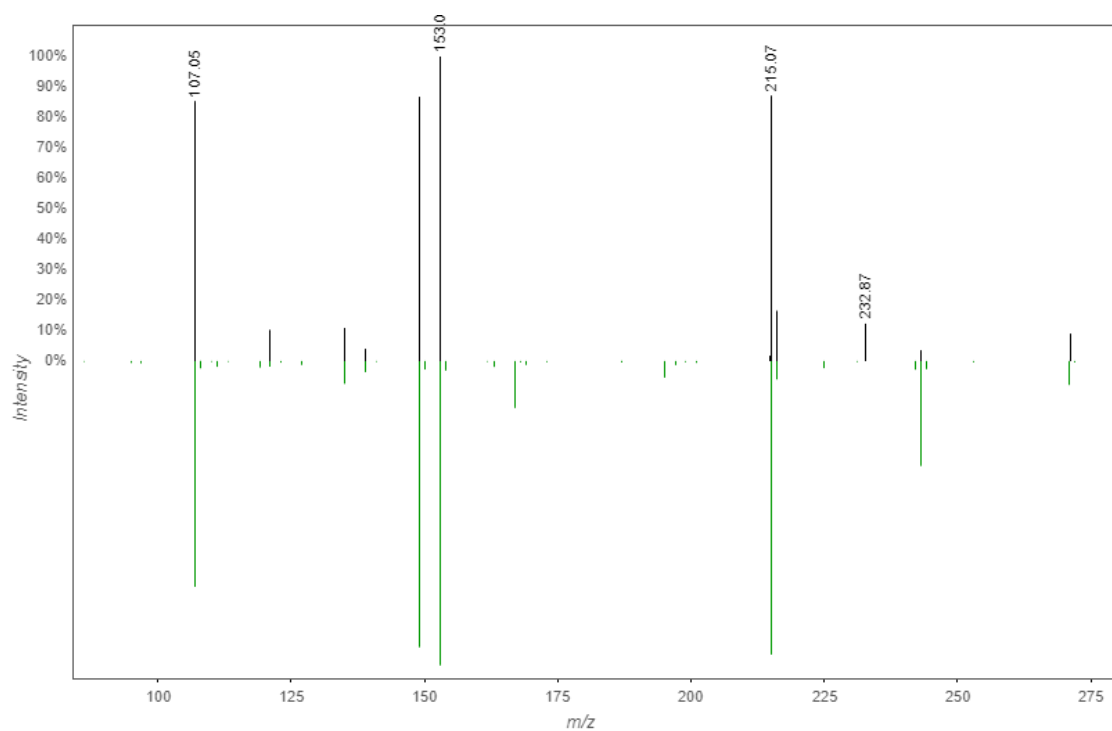


Fig S13. MS/MS match between GNPS database (green) and *Euterpe oleracea* Mart extract (black) for **7**.

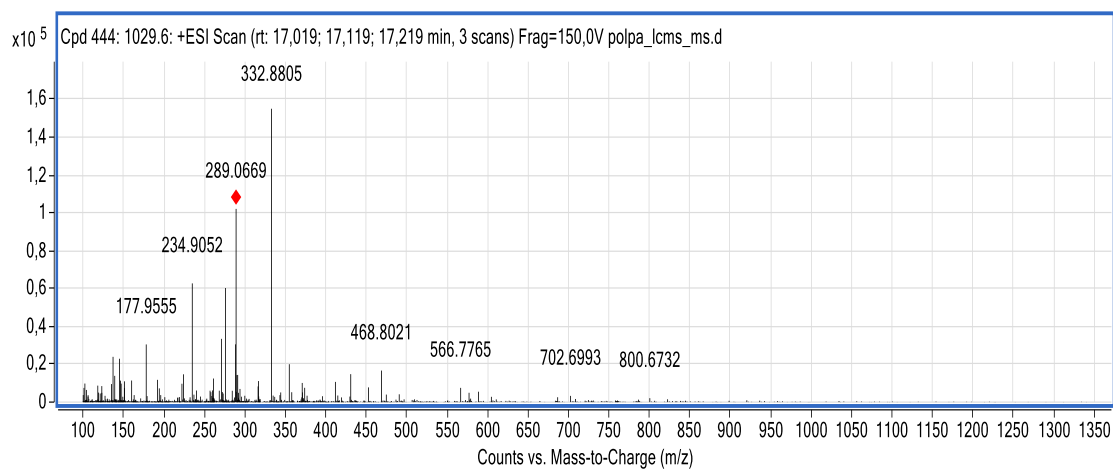


Fig. S14. Mass Spectrum of $[M+H]^+$ of **7**

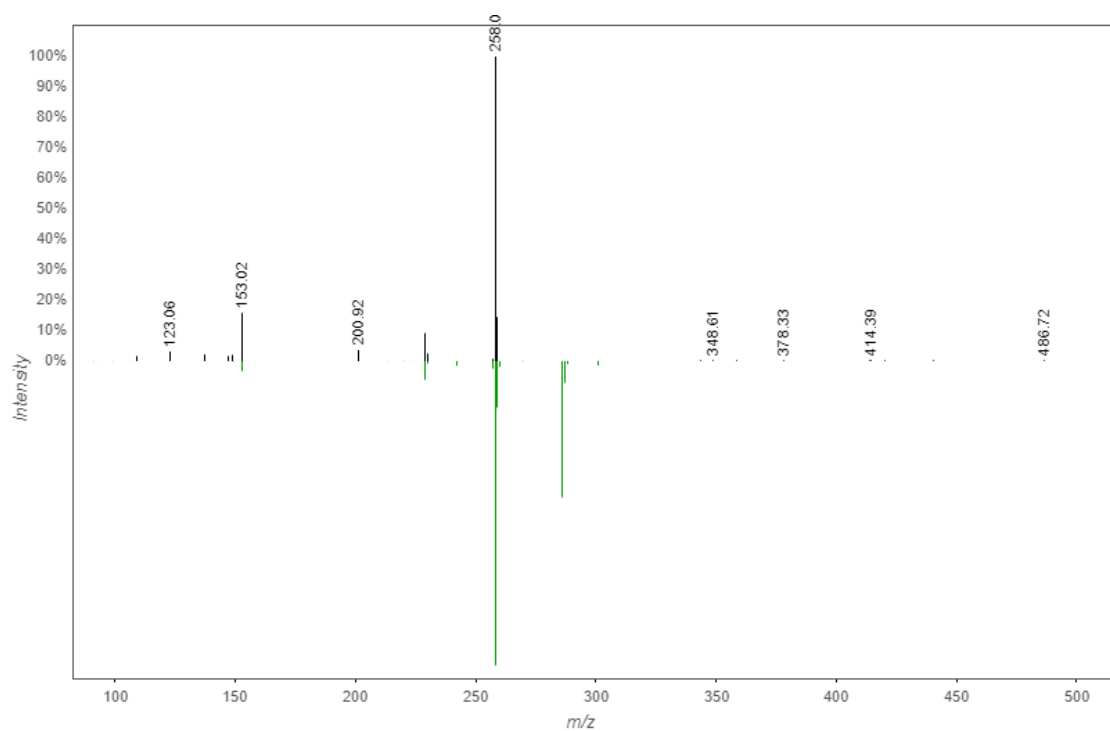


Fig S15. MS/MS match between GNPS database (green) and *Euterpe oleracea* Mart extract (black) for **8**.

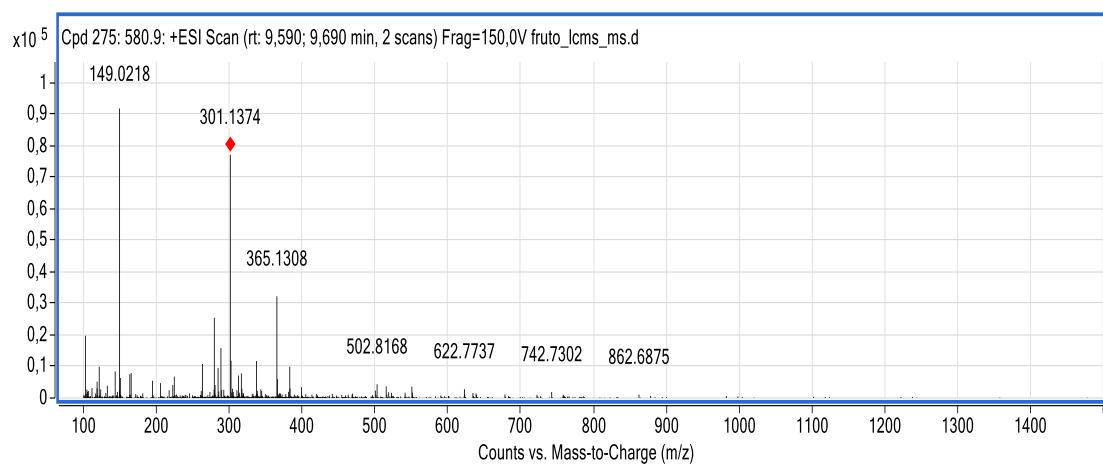


Fig. S16. Mass Spectrum of $[M+H]^+$ of **8**

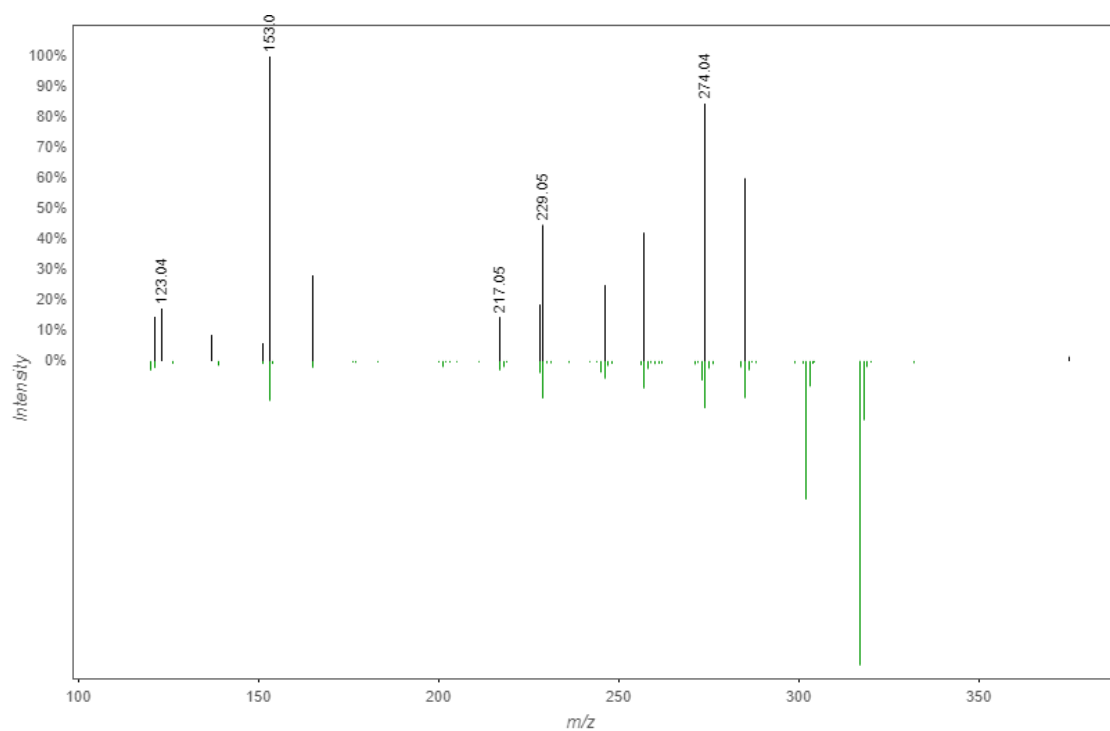


Fig S17 MS/MS match between GNPS database (green) and *Euterpe oleracea* Mart extract (black) for **9**.

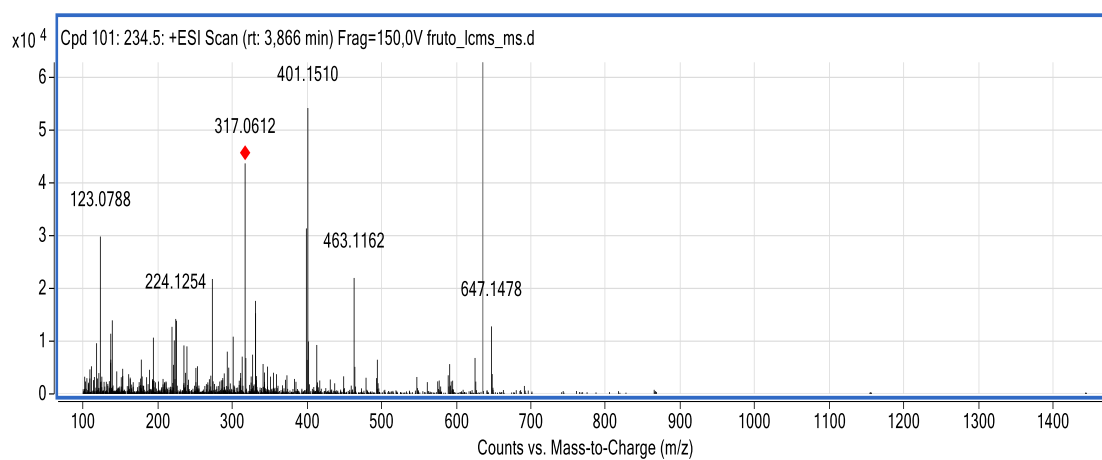


Fig. S18. Mass Spectrum of [M+H]⁺ of **9**

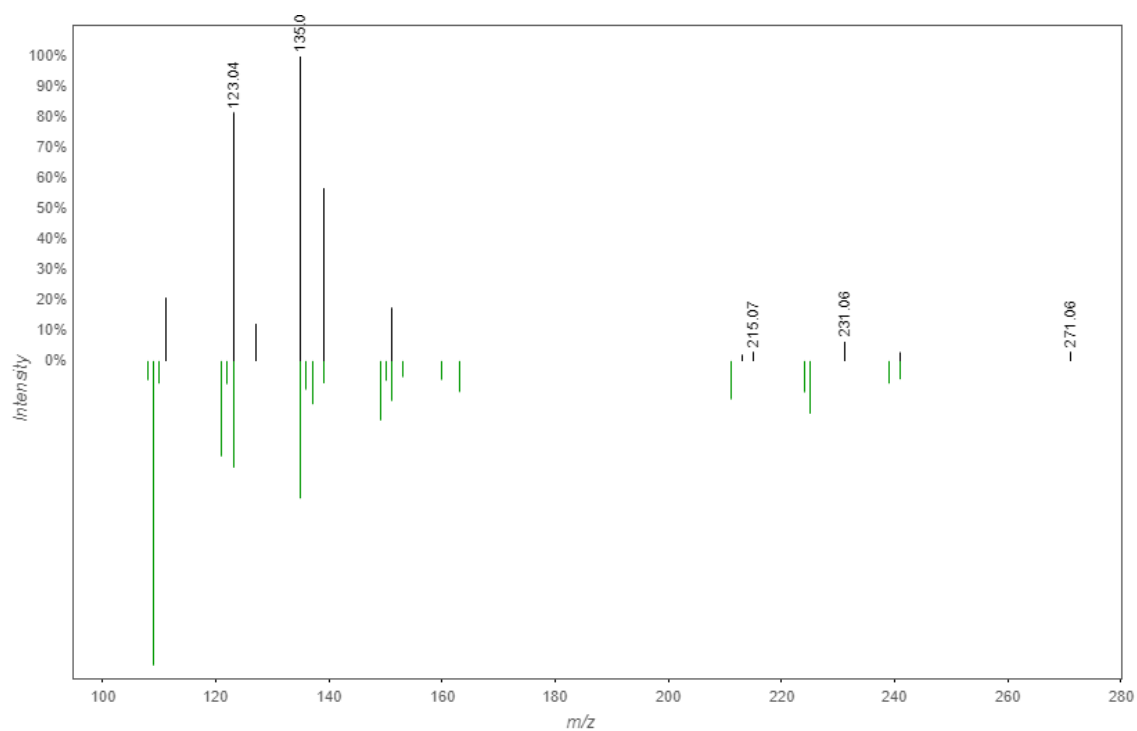


Fig S19. MS/MS match between GNPS database (green) and *Euterpe oleracea* Mart extract (black) for **10**.

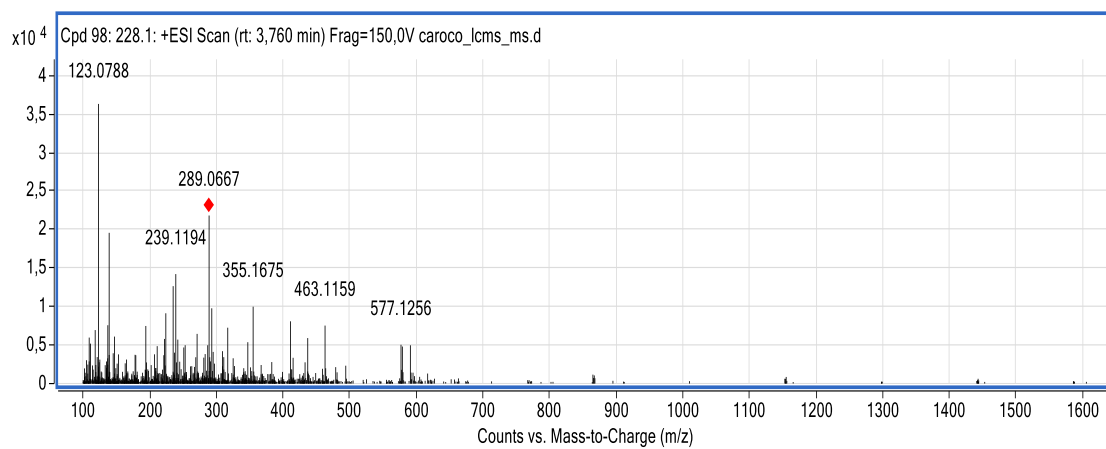


Fig. S20. Mass Spectrum of $[M+H]^+$ of **10**

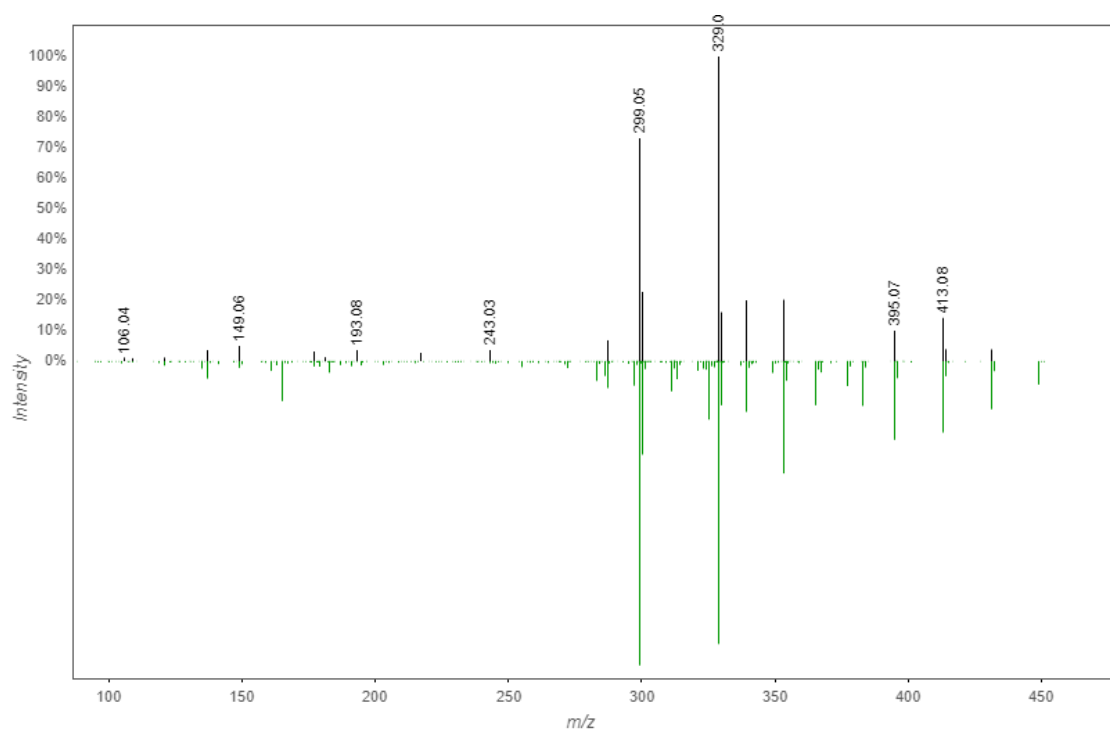


Fig S21. MS/MS match between GNPS database (green) and *Euterpe oleracea* Mart extract (black) for **11**.

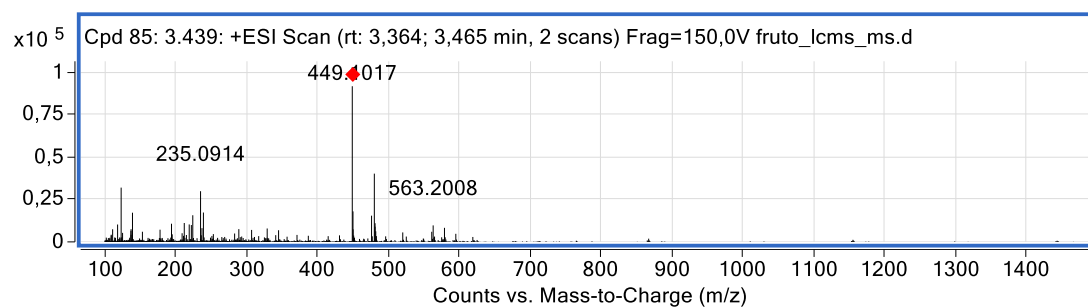


Fig. S22. Mass Spectrum of $[M+H]^+$ of **11**

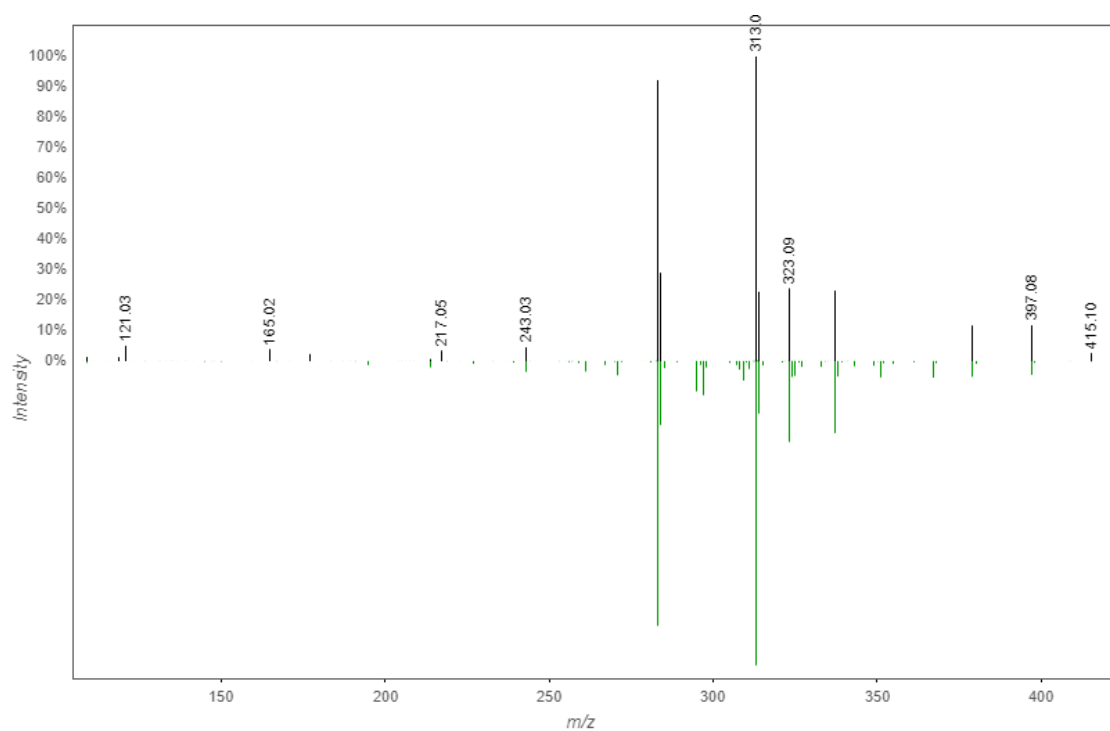


Fig S23. MS/MS match between GNPS database (green) and *Euterpe oleracea* Mart extract (black) for **12**.

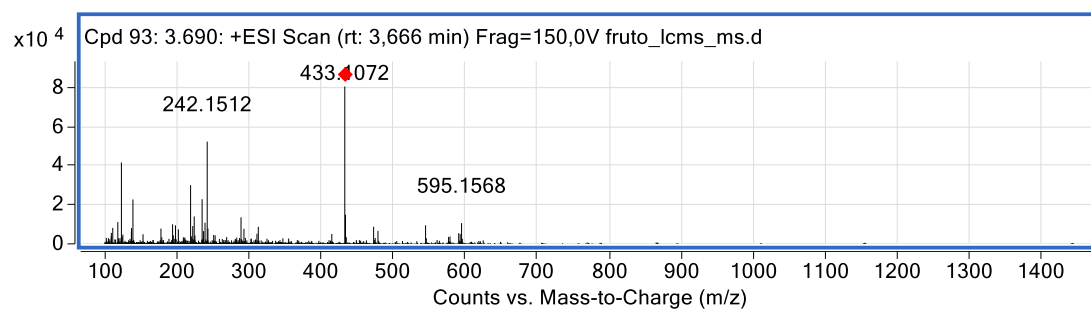


Fig. S24. Mass Spectrum of $[M+H]^+$ of **12**

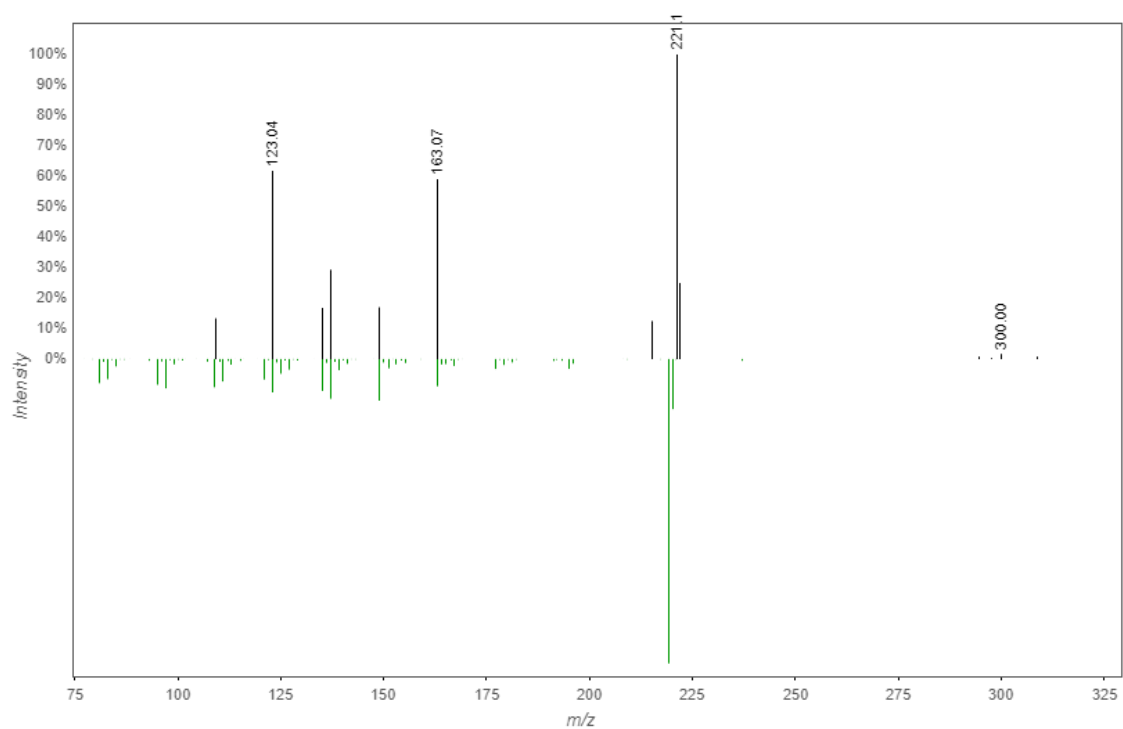


Fig S25. MS/MS match between GNPS database (green) and *Euterpe oleracea* Mart extract (black) for **13**

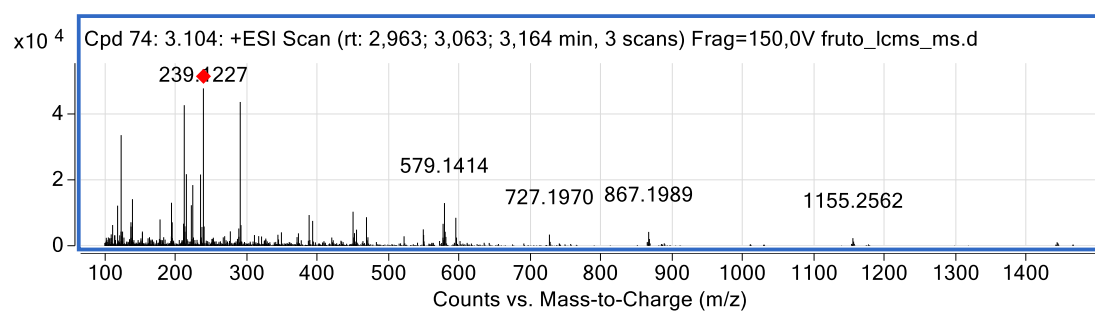


Fig. S26. Mass Spectrum of $[M+H]^+$ of **13**

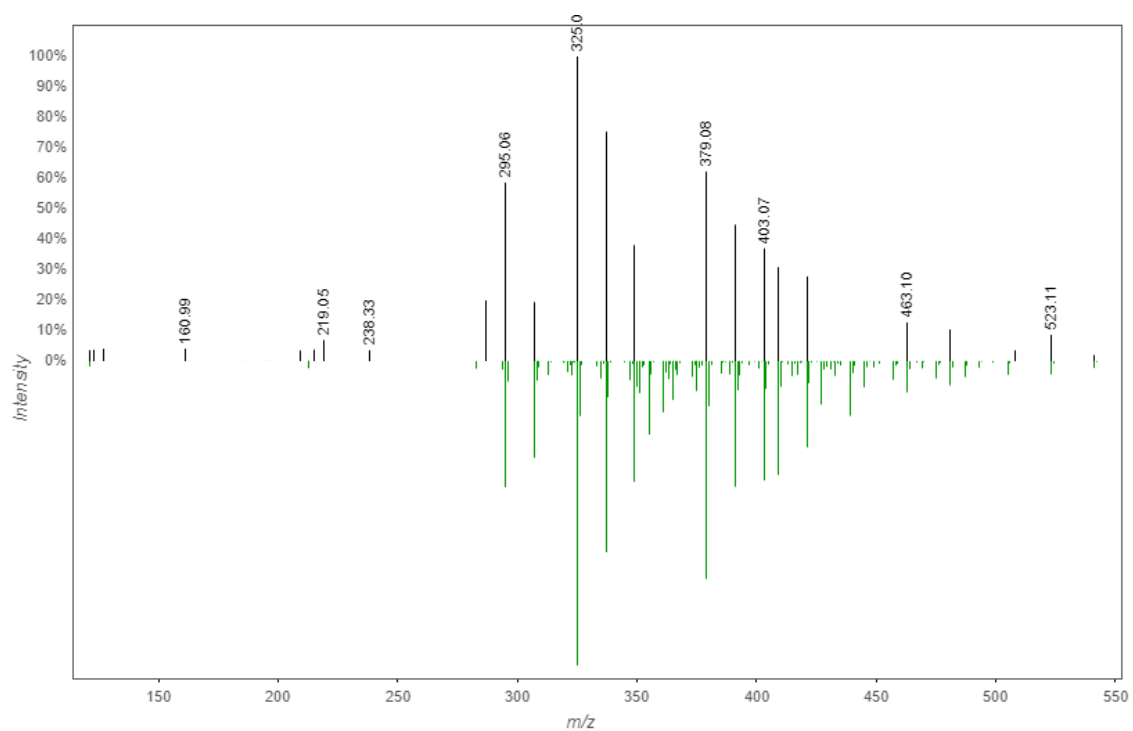


Fig S27. MS/MS match between GNPS database (green) and *Euterpe oleracea* Mart extract (black) for **14**

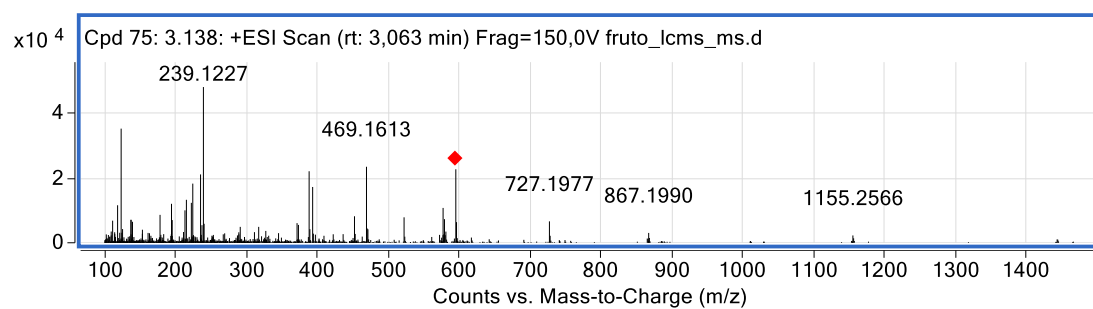


Fig. S28. Mass Spectrum of $[M+H]^+$ of **14**