

Figure S1. Linear fit of $p/[n(p_0-p)]$ against p/p_0 plots

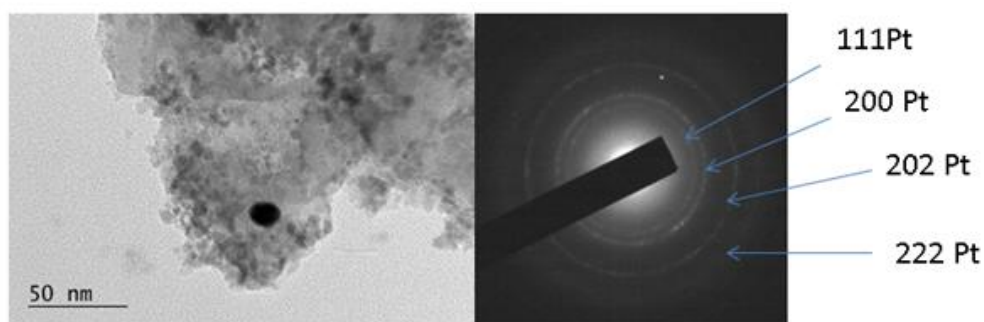


Figure S2. SAED of 10Ni1Pt/Z-h (B) (Phases identified: Pt cubic, $a=3.87800$, #96-101-1115 and Ni hexagonal, $a=2.62200$ Å $c=4.32100$ Å, # 96-901-3008)

Table S1. Chemical composition of the studied samples

| Samples | Content of Ni, wt. % | Content of Pt, wt. % | Content of Ru, wt. % |
|-------------|-------------------------|-------------------------|-------------------------|
| 10Ni/Z-h | 9.86 | - | - |
| 10Ni1Pt/Z-h | 9.92 | 0.98 | - |
| Pt/Z-h | 1.02 | - | - |
| 5Ru/Z-h | - | - | 4.83 |
| 5Ru1Pt/Z-h | - | 0.92 | 4.89 |