

First Evidence of Earth Wax Inside the Casting Molds from the Roman Era

Klára Jagošová, Jan Jílek, Pavel Fojtík, Ivan Čižmář, Miroslav Popelka, Ondřej Kurka and Lukáš Kučera

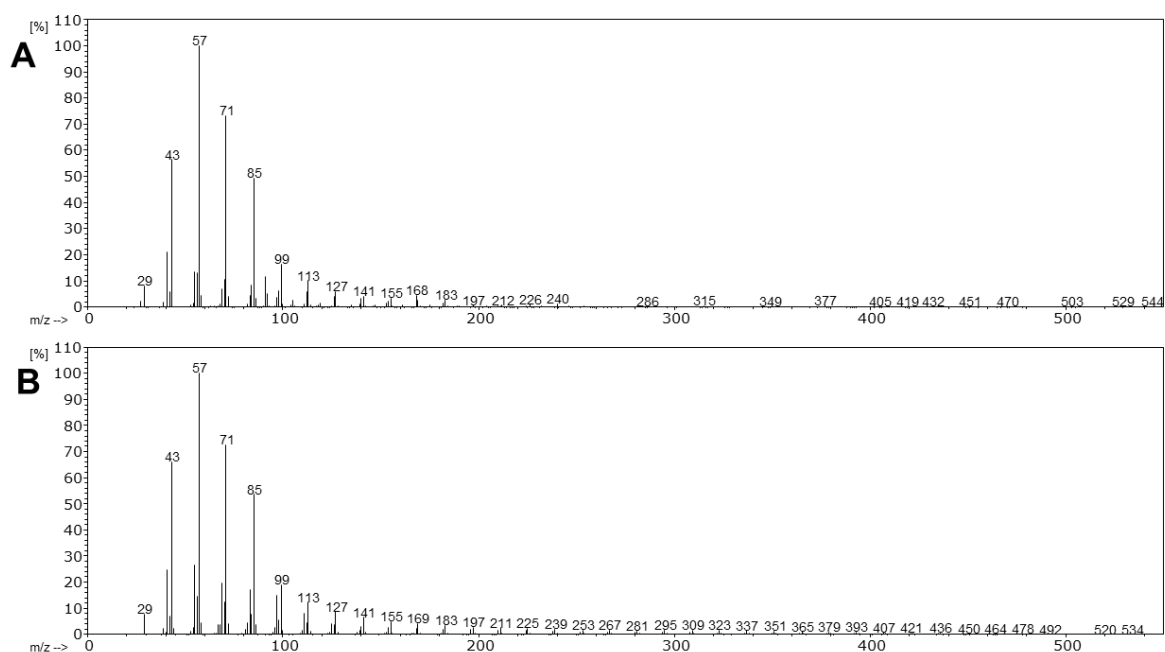


Figure S1: Combined mass spectra of all detected peaks in pyrogram (range 8.0–19.0 min) of the solid sample from mold #2 (A) and the database reference mass spectrum of ozokerite wax C1-C40 (B)

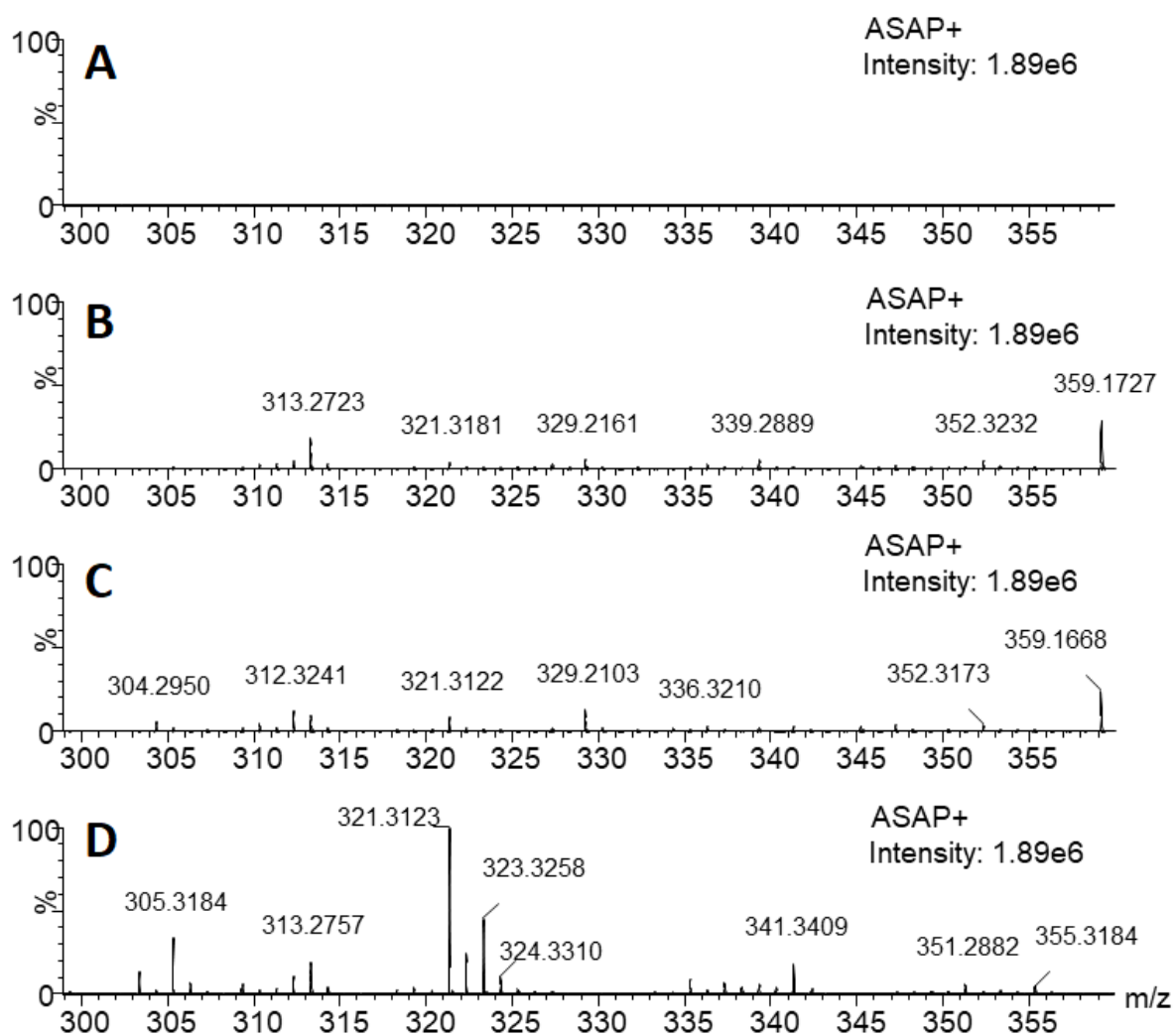


Figure S2: ASAP-IMS-HRMS spectrum in MS mode of blank (**A**), sample from mold #1 (**B**), mold #2 (**C**) and ceresin standard (**D**) in mass range 300-360 Da.