

A Novel L-Shaped Fluorescent Probe for AIE Sensing of Zinc (II) Ion by a DR/NIR Response

Rosita Diana ¹, Ugo Caruso ², Francesco Silvio Gentile ², Luigi Di Costanzo ¹ and Barbara Panunzi ^{1,*}

¹ Department of Agriculture, University of Napoli Federico II, 80055 Portici, NA, Italy; rosita.diana@unina.it (R.D.); luigi.dicostanzo4@unina.it (L.D.C.)

² Department of Chemical Sciences, University of Napoli Federico II, 80126 Napoli, Italy; ugo.caruso@unina.it (U.C.); francesco.gentile@unina.it (F.S.G.)

* Correspondence: barbara.panunzi@unina.it; Tel.: +39-081-674-170

SUPPLEMENTARY MATERIAL

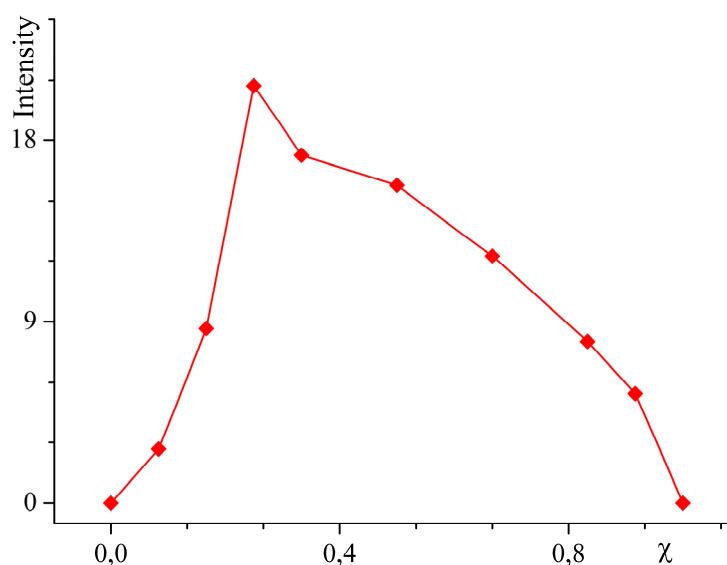


Figure S1. Job's plot for the L-zinc (II) adduct ($\chi = [\text{Metal}]/[\text{Metal}] + [\text{Ligand}]$).

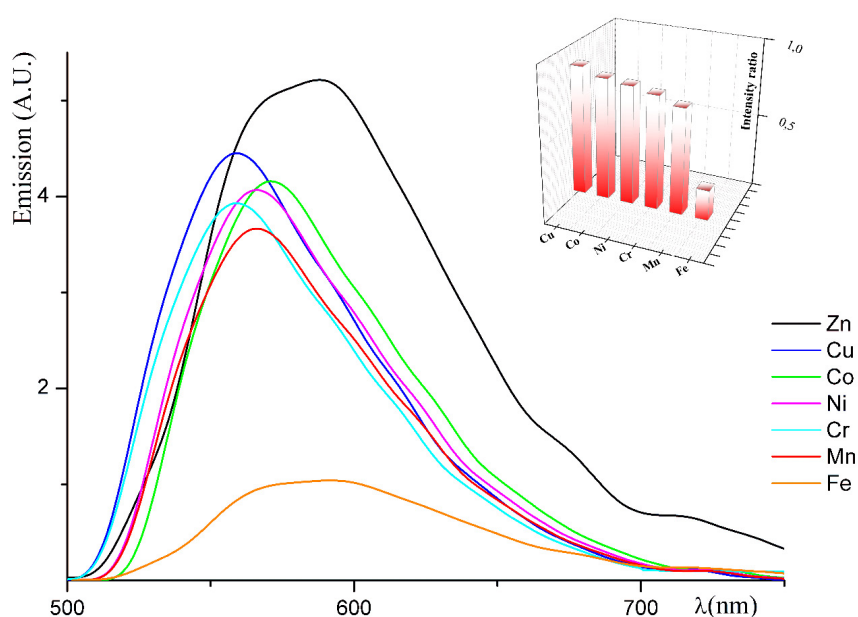
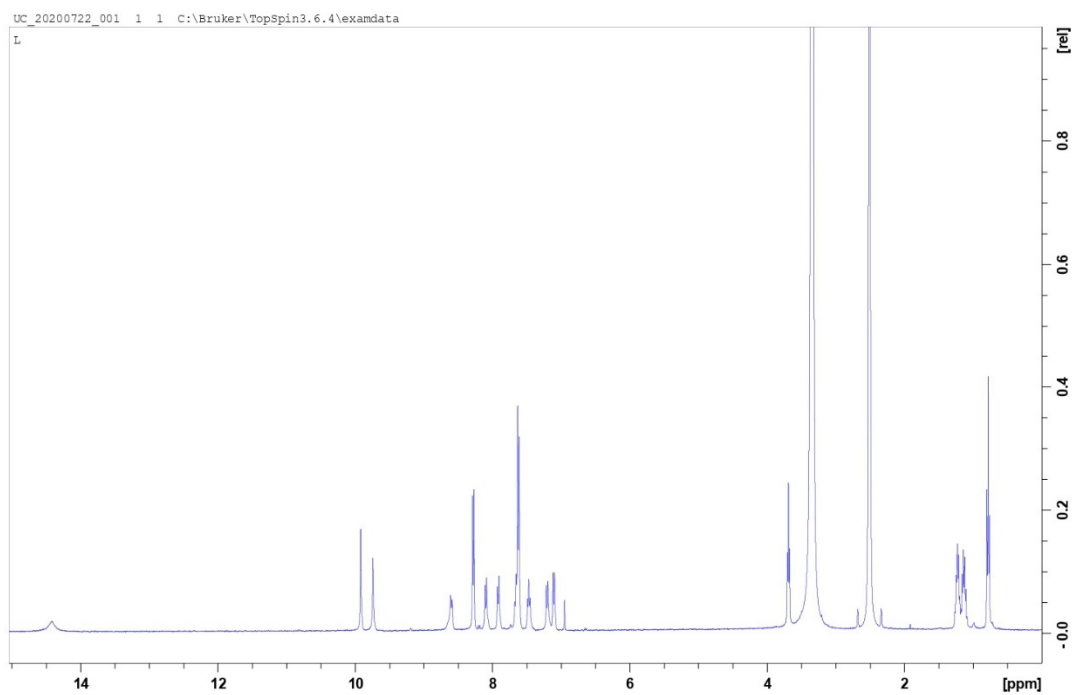
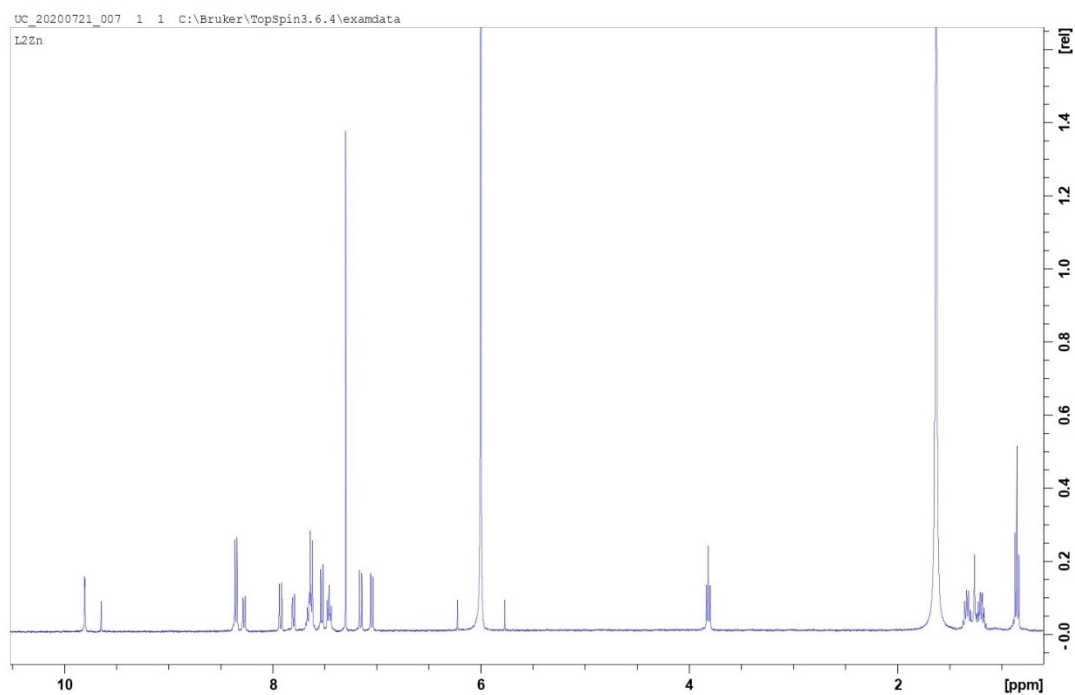


Figure S2. Fluorescence spectra of L_2Zn in presence of 1 equivalent of interferent transition metal ions in 200 mM ethanolic solutions. In the inset: quantitative representation by the interferogram curve.



Hard copy of the ^1H NMR (400 MHz, DMSO- d_6 , 25 $^\circ\text{C}$, ppm) spectrum of L.



Hard copy of the ^1H NMR (400 MHz, DMSO- d_6 , 25 $^\circ\text{C}$, ppm) spectrum of L₂Zn.