

Supplementary Materials

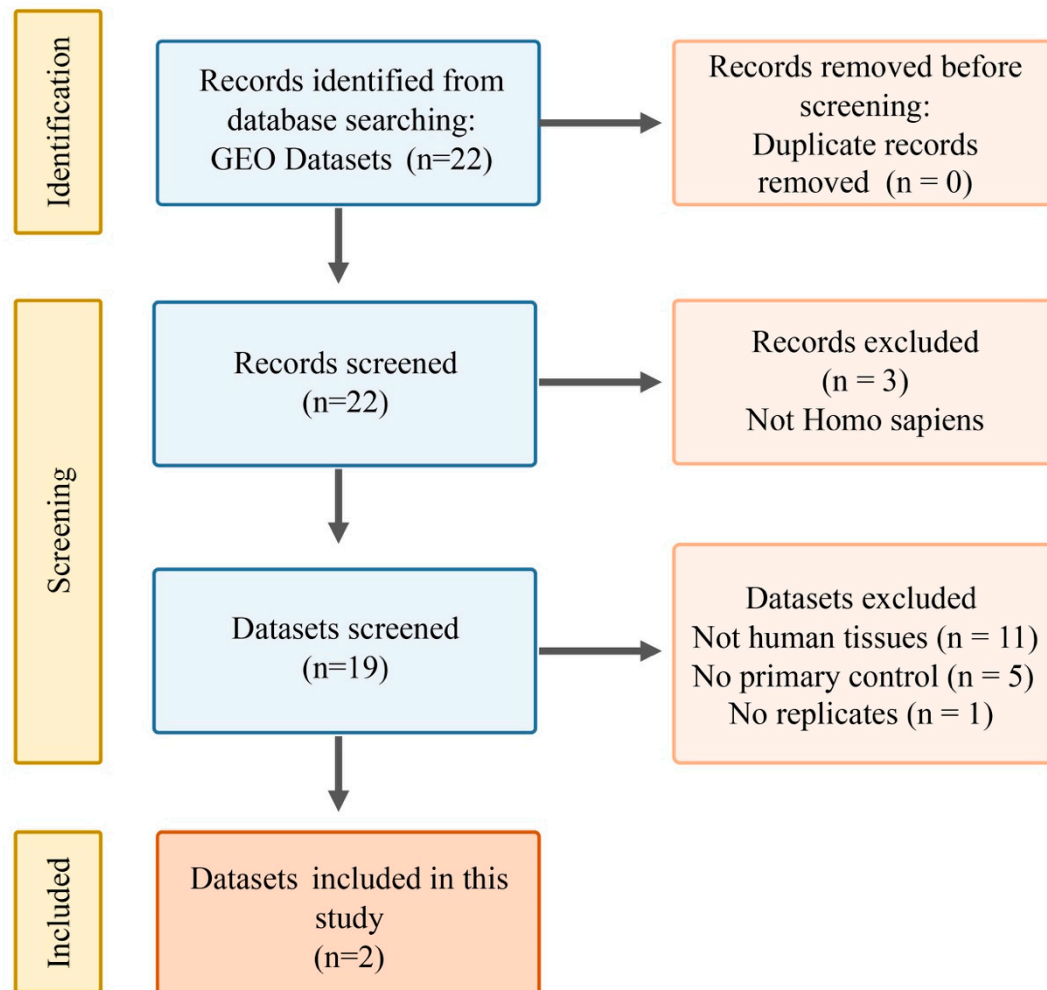


Figure S1. Flowchart of inclusion criteria and exclusion criteria for GSE datasets selection according to the PRISMA guidelines.

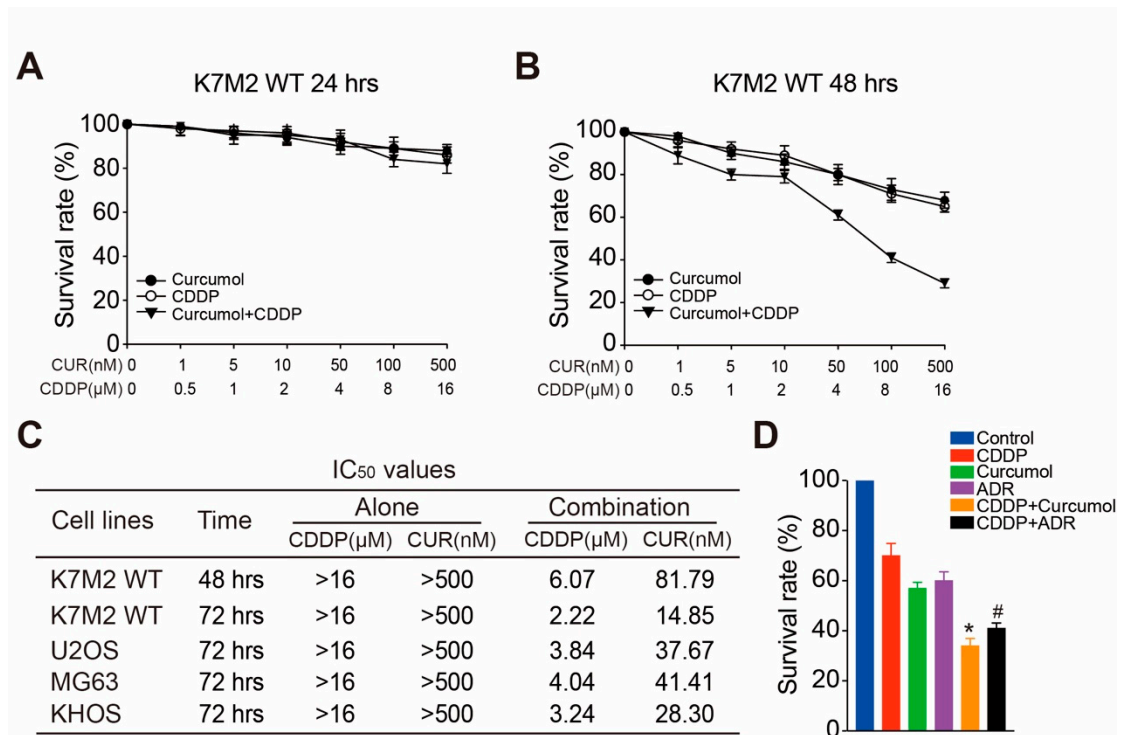


Figure S2. Curcumol synergized CDDP to inhibit cell proliferation in K7M2 WT cells. (A-B) Cell-proliferation inhibitory activities in K7M2 WT cells were investigated by SRB assays. Cells were seeded in 96-well plates and treated with serial concentrations of curcumol, CDDP or combinations of both for 24 h (A) or 48 h (B). Dose-response curves for curcumol, CDDP or combination treatment are displayed. Each experimental value is a result of triplicate repeats, and the error bars indicate the standard deviation (SD). (C) The IC₅₀ values were calculated for the curcumol and CDDP concentrations used in the SRB assays. (D) K7M2 WT cells were seeded in 96-well plates and the groups were set as: control, CDDP (5μM), Curcumol (100nM), ADR (1μM), CDDP (5μM)+Curcumol (100nM), and CDDP (5μM)+ADR (1μM). After 72 h treatment, cells were collected for SRB assay. *p<0.05 (CDDP group compared with the CDDP+Curcumol group), # p<0.05 (CDDP group compared with the CDDP+ADR group); Student's t test.

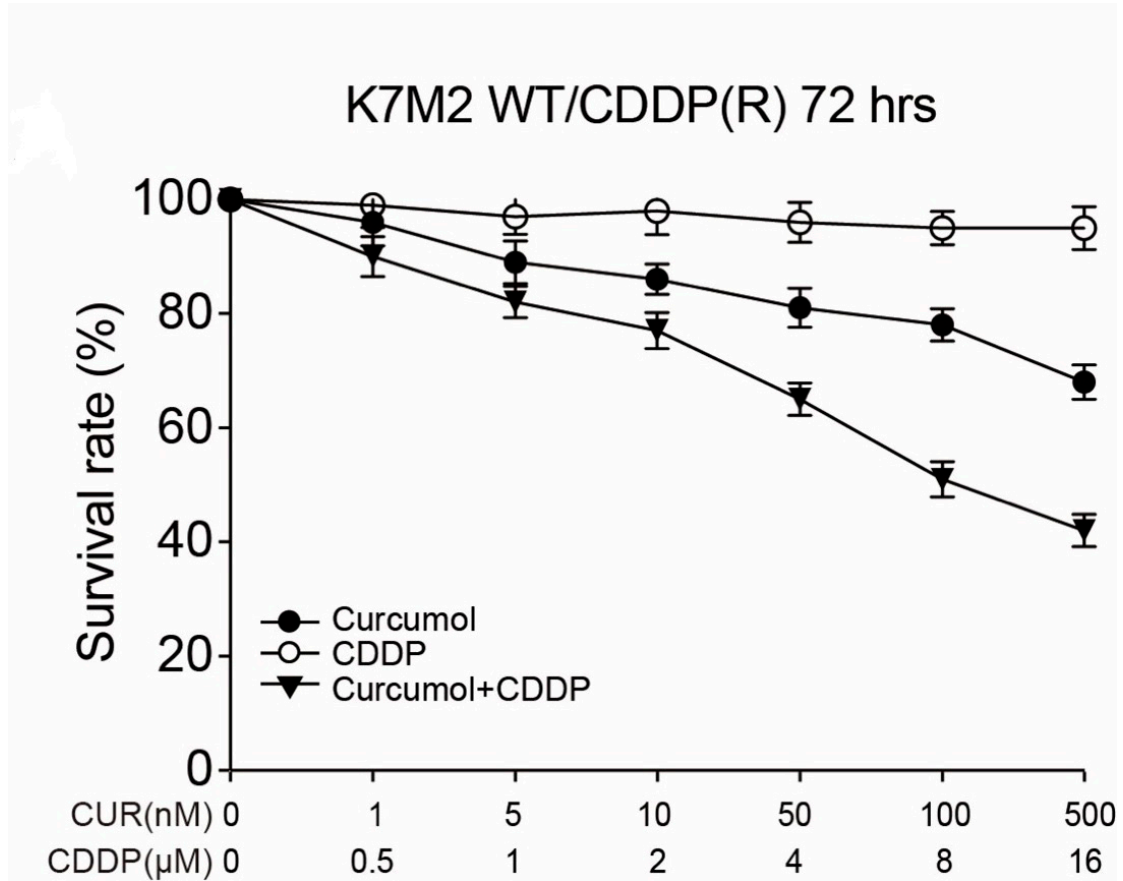


Figure S3. Curcumol synergized CDDP to inhibit cell proliferation in K7M2 WT/CDDP-resistant cells. The drug-resistant cell line (K7M2 WT/CDDP (R)) was obtained by plating K7M2 WT cells onto a 6-well plate and treating with 5μM CDDP for 48h, and then the dead cells were removed with DMEM (Gibco). This step was repeated until the subsequent addition of CDDP did not lead to any further cell death. Finally, the cells obtained were the drug-resistant cell line (K7M2 WT/CDDP-resistant cells). (A) Cell-proliferation inhibitory activities in K7M2 WT/CDDP(R) cells were investigated by SRB assays. Cells were seeded in 96-well plates and treated with serial concentrations of curcumol, CDDP or combinations of both for 72h. Dose-response curves for curcumol, CDDP or combination treatment are displayed. Each experimental value is a result of triplicate repeats, and the error bars indicate the standard deviation (SD).