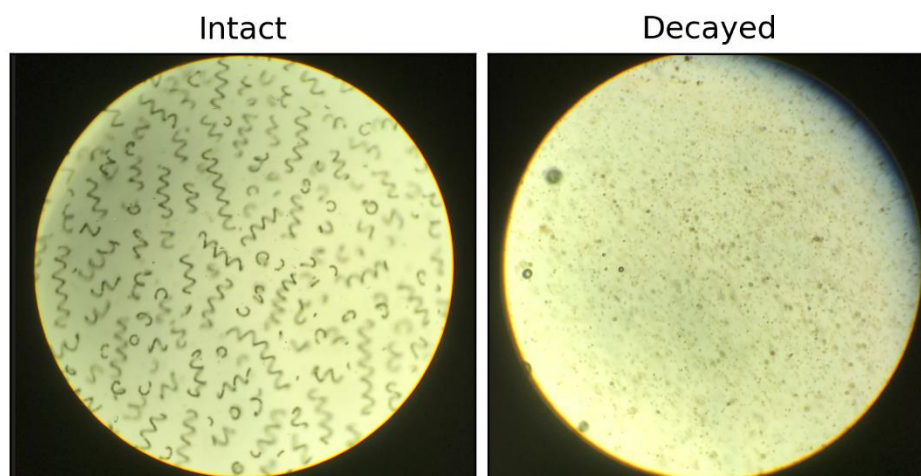
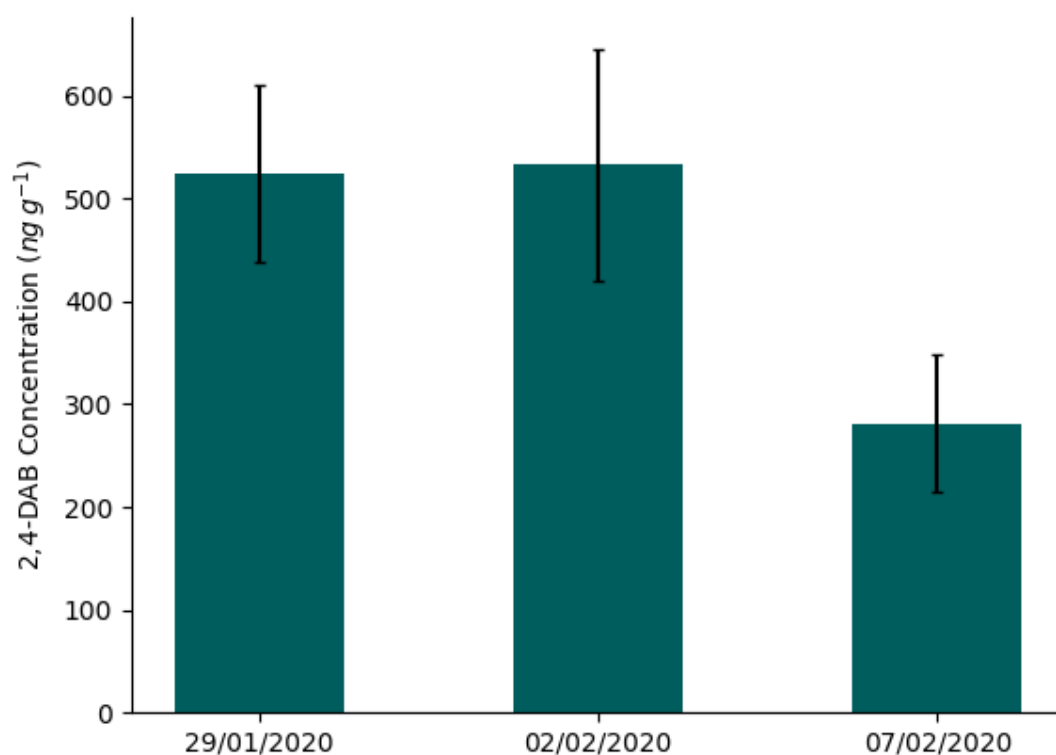


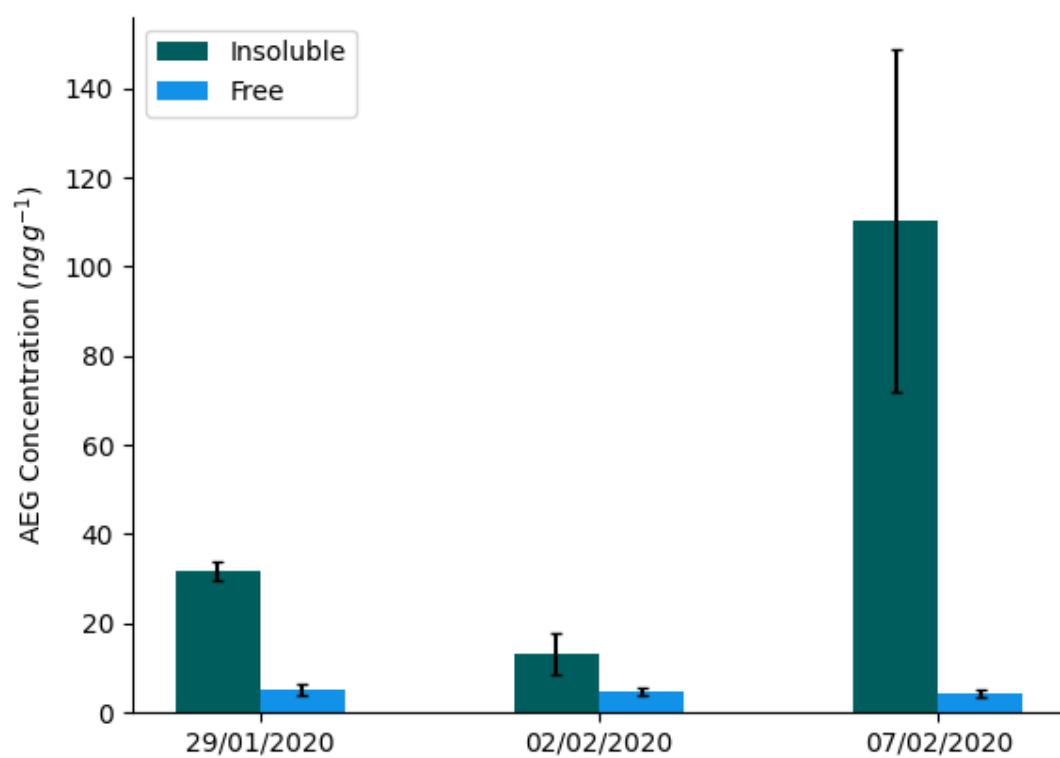
Supplementary Information



Supplementary Figure S1. Micrograph of the two samples taken from 07/02/2020 at 100x magnification. “Intact” is the sample taken from the bulk of the bloom, “Decayed” was selectively sampled from a part of the bloom with cell breakdown.



Supplementary Figure S2 2,4-DAB concentrations in the insoluble fraction \pm standard deviation in environmental cyanobacteria samples ($n=3$, $n=6$ for 07/02/2020 with combined decayed and the intact results).



Supplementary Figure S3 AEG concentrations \pm standard deviation in environmental cyanobacteria samples (n=3, n=6 for 07/02/2020 with combined decayed and the intact results).