

## Supplementary Materials

### Effect of *Holoptelea integrifolia* (Roxb.) Planch. *n*-Hexane Extract and Its Bioactive Compounds on Wound Healing and Anti-Inflammatory Activity

Kanokwan Somwong <sup>1,2</sup>, Pattawika Lertpatipanpong <sup>2</sup>, Wutigri Nimlamool <sup>3</sup>, Aussara Panya <sup>1,4</sup>, Yingmanee Tragoolpua <sup>1,4</sup>, Rujipas Yongsawas <sup>1</sup>, Wandee Gritsanapan <sup>5</sup>, Hataichanok Pandith <sup>1,4,\*</sup> and Seung Joon Baek <sup>2,\*</sup>

<sup>1</sup> Department of Biology, Faculty of Science, Chiang Mai University, Chiang Mai 50200, Thailand

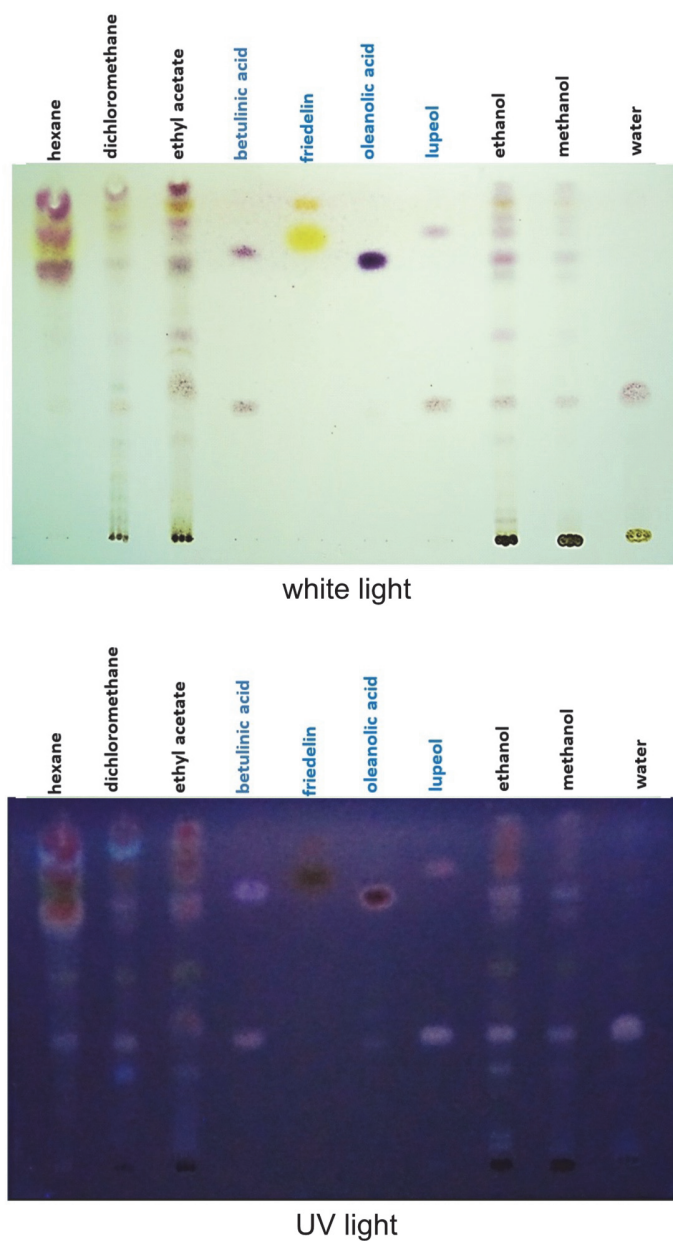
<sup>2</sup> Laboratory of Signal Transduction, College of Veterinary Medicine and Research Institute for Veterinary Science, Seoul National University, Seoul 08826, Republic of Korea

<sup>3</sup> Department of Pharmacology, Faculty of Medicine, Chiang Mai University, Chiang Mai 50200, Thailand

<sup>4</sup> Research Center in Bioresources for Agriculture, Industry and Medicine, Chiang Mai 50200, Thailand

<sup>5</sup> Department of Pharmacognosy, Faculty of Pharmacy, Mahidol University, Bangkok 10400, Thailand

\*Correspondence: hataichanok064@gmail.com (H.P.); baeksj@snu.ac.kr (S.J.B.)



**Supplementary Figure S1.** The TLC membrane demonstrated the phytochemical components of *H. integrifolia* extract with various solvents (hexane, dichloromethane, ethyl acetate, ethanol, methanol, and water) were developed along with triterpenoids (betulinic acid, friedelin, oleanolic acid, and lupeol). Hexane demonstrated a promising solvent to show a large amount of phytochemical components.