

Inhibitory Effect of ursolic acid against the migration and invasion of Doxorubicin-resistant breast cancer

Li Zong^{1, †}, Guorong Cheng^{1, †}, Jingwu Zhao¹, Xiaoyu Zhuang^{2*}, Zhong Zheng¹,

Zhiqiang Liu¹, Fengrui Song^{1, *}

¹ State Key Laboratory of Electroanalytical Chemistry, Jilin Province Key Laboratory of Chinese Medicine Chemistry and Mass Spectrometry, Changchun Institute of Applied Chemistry, Chinese Academy of Sciences, Changchun 130022, China; zongliciac@126.com (L.Z.); mslab26@ciac.ac.cn (G.C.); mslab21@ciac.ac.cn (Z.P.); zhengzh@ciac.ac.cn (Z.Z.); liuzq@ciac.ac.cn (Z.L.)

² Experiment Center for Science and Technology, Shanghai University of Traditional Chinese Medicine, Shanghai, 201203, China;

[†] These authors contributed equally to this work.

* Correspondence: xyzhuang59@foxmail.com (X.Z.) and songfr@ciac.ac.cn (F.S.)

Table S1. Multiple reaction monitoring (MRM) parameters for ten analytes.

Analytes	MRM transition (m/z)	Cone voltage (V)	Collision energy (eV)	Ion mode
Arg	175.1>70.1 ^a	14	12	positive
	175.1>60.1	14	18	positive
Orn	133.1>70.1 ^a	16	14	positive
	133.1>116.0	16	10	positive
Met	150.0>104.1 ^a	20	10	positive
	150.0>133.03	20	8	positive
SAM	399.3>136.1 ^a	16	22	positive
	399.3>250.1	16	14	positive
MTA	298.2>136.1 ^a	18	18	positive
	298.2>119.1	18	40	positive
Put	89.2>72.1 ^a	10	8	positive
Spd	146.1>112.1 ^a	18	10	positive
	146.1>72.2	18	14	positive
Spm	203.2>84.1 ^a	18	28	positive
	203.2>112.2	18	18	positive
Acetylspn	245.3>129.1 ^a	18	14	positive
	245.3>100.1	18	18	positive
IS	117.0>100.1 ^a	30	10	positive
	117.0>55.2	30	16	positive

^aprecursor/product ion pair was used for quantification of the analytes.



Figure S1. Original western blots images of ODC (n=3).



Figure S2. Original western blots images of Erk1/2 (n=3).



Figure S3. Original western blots images of P-Erk1/2 (n=3).

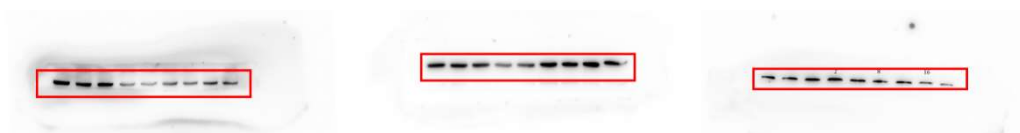


Figure S4. Original western blots images of VEGF (n=3).



Figure S5. Original western blots images of MMP-9 (n=3).



Figure S6. Original western blots images of GAPDH (n=3).