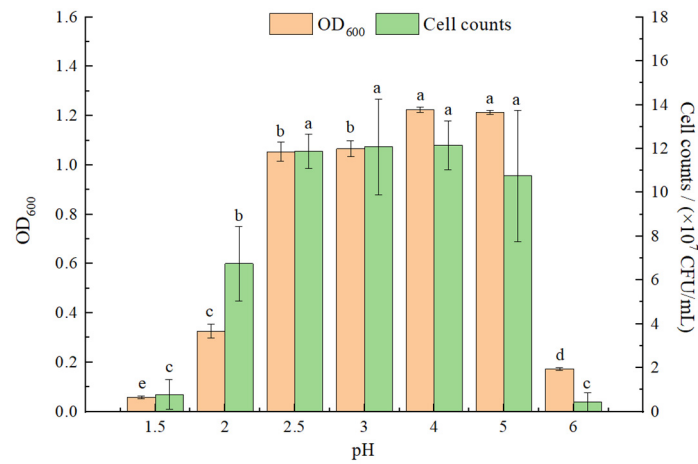
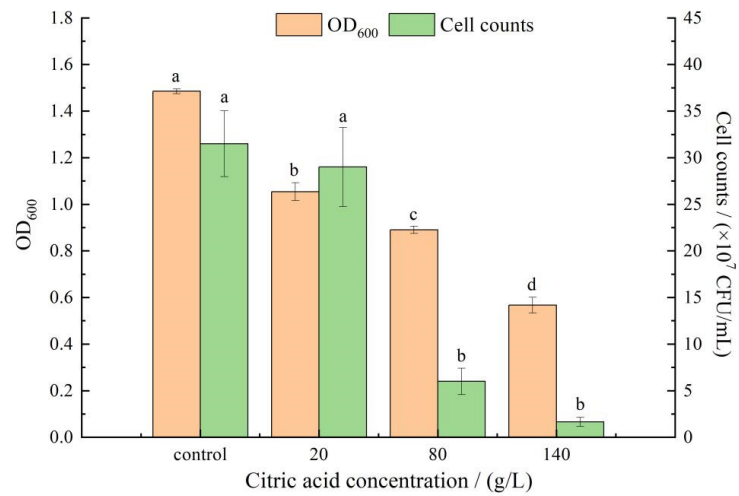


(A)

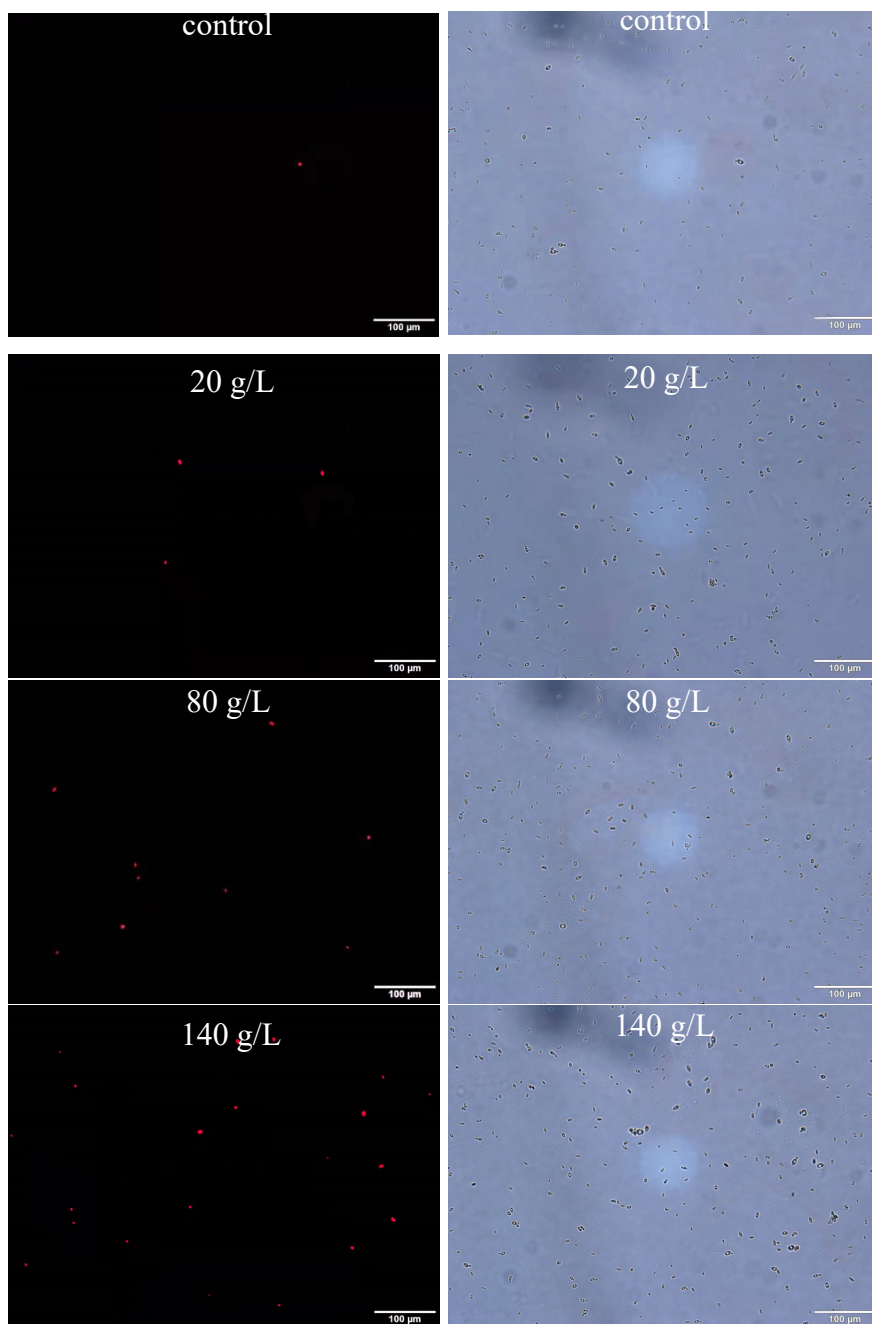


(B)

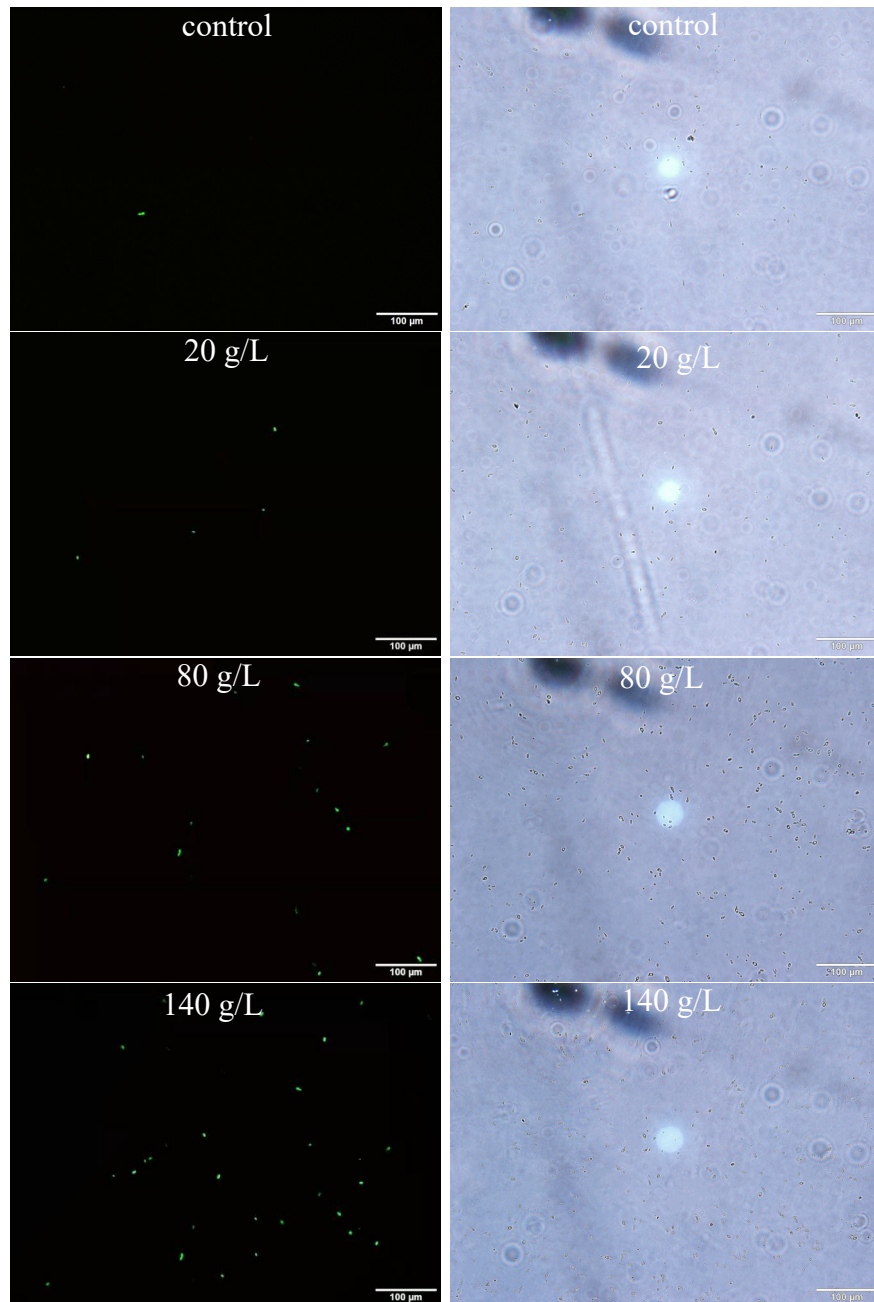


**Supplementary Figure S1.** Cell viabilities of *I. terricola* WJL-G4 under different pH (A) and citric acid concentrations (B). Error bars: SD ( $n = 3$ ). Statistically significant differences ( $p < 0.05$ ) were determined by one-way ANOVA with Duncan's test and were indicated with different letters within each indicator.

(A)



(B)



**Supplementary Figure S2.** PI and DCFH-DA staining observation results.

Letters correspond to: (A): Fluorescence microscope observation pictures after PI staining. (B): Fluorescence microscope observation pictures after DCFH-DA staining.