

Supplementary Material

Cytotoxic Activity of Dammarane-Type Triterpenoids from the Stem Bark of *Aglaia cucullata* (Meliaceae)

Purnama ¹, Kindi Farabi ^{1,3}, Dudi Runadi ¹, Hadi Kuncoro ², Desi Harneti ¹, Nurlelasari ¹, Tri Mayanti ¹, Mohamad Nurul Azmi ⁴, Sofa Fajriah ⁵, Unang Supratman ^{1,3,*}

¹Department of Chemistry, Faculty of Mathematics and Natural Sciences, Universitas Padjadjaran, Jatinangor, 45363, Indonesia

²Faculty of Pharmacy, Universitas Mulawarman, Samarinda, 75123, East Kalimantan, Indonesia

³Central Laboratory, Universitas Padjadjaran, Jatinangor, 45363, Indonesia.

⁴School of Chemical Sciences, Universiti Sains Malaysia, 11800 Minden, Penang, Malaysia

⁵Research Center for Pharmaceutical Ingredients and Traditional Medicine, National Research and Innovation Agency (BRIN), Complex Cibinong Science Center – BRIN., Cibinong 16911, Bogor, Jawa Barat, Indonesia

* Correspondence: unang.supratman@unpad.ac.id; Tel.: +62 22 7794391

Contents

Figure S1. HRTOFMS Spectrum of **1**.

Figure S2. FTIR Spectrum of **1**.

Figure S3. ^1H -NMR Spectrum of **1** (500 MHz in CDCl_3).

Figure S4. ^{13}C -NMR and DEPT-135° Spectrum of **1** (125 MHz in CDCl_3).

Figure S5. HMQC Spectrum of **1**.

Figure S6. HMBC Spectrum of **1**.

Figure S7. ^1H - ^1H -COSY Spectrum of **1**.

Figure S8. HRTOFMS Spectrum of **2**.

Figure S9. FTIR Spectrum of **2**.

Figure S10. ^1H -NMR Spectrum of **2** (500 MHz in CDCl_3).

Figure S11. ^{13}C -NMR and DEPT-135° Spectrum of **2** (125 MHz in CDCl_3).

Figure S12. HRTOFMS Spectrum of **3**.

Figure S13. FTIR Spectrum of **3**.

Figure S14. ^1H -NMR Spectrum of **3** (500 MHz in CDCl_3).

Figure S15. ^{13}C -NMR and DEPT-135° Spectrum of **3** (125 MHz in CDCl_3).

Figure S16. HRTOFMS Spectrum of **4**.

Figure S17. FTIR Spectrum of **4**.

Figure S18. ^1H -NMR Spectrum of **4** (500 MHz in CDCl_3).

Figure S19. ^{13}C -NMR and DEPT-135° Spectrum of **4** (125 MHz in CDCl_3).

Figure S20. HMQC Spectrum of **4**.

Figure S21. HMBC Spectrum of **4**.

Figure S22. ^1H - ^1H -COSY Spectrum of **4**.

Figure S23. HRTOFMS Spectrum of **5**.

Figure S24. FTIR Spectrum of **5**.

Figure S25. ^1H -NMR Spectrum of **5** (500 MHz in CDCl_3).

Figure S26. ^{13}C -NMR and DEPT-135° Spectrum of **5** (125 MHz in CDCl_3).

Figure S27. HMQC Spectrum of **5**.

Figure S28. HMBC Spectrum of **5**.

Figure S29. ^1H - ^1H -COSY Spectrum of **5**.

Figure S30. HRTOFMS Spectrum of **6**.

Figure S31. FTIR Spectrum of **6**.

Figure S32. ^1H -NMR Spectrum of **6** (500 MHz in CDCl_3).

Figure S33. ^{13}C -NMR and DEPT-135° Spectrum of **6** (125 MHz in CDCl_3).

Figure S34. HRTOFMS Spectrum of **7**.

Figure S35. FTIR Spectrum of **7**.

Figure S36. ^1H -NMR Spectrum of **7** (500 MHz in CDCl_3).

Figure S37. ^{13}C -NMR and DEPT-135° Spectrum of **7** (125 MHz in CDCl_3).

Figure S38. Results of cytotoxic activity of **1** against MCF-7 cell line.

Figure S39. Results of cytotoxic activity of **2** against MCF-7 cell line.

Figure S40. Results of cytotoxic activity of **3** against MCF-7 cell line.

Figure S41. Results of cytotoxic activity of **4** against MCF-7 cell line.

Figure S42. Results of cytotoxic activity of **5** against MCF-7 cell line.

Figure S43. Results of cytotoxic activity of **6** against MCF-7 cell line.

Figure S44. Results of cytotoxic activity of **7** against MCF-7 cell line.

Figure S45. Results of cytotoxic activity of **1** against B16-F10 cell line.

Figure S46. Results of cytotoxic activity of **2** against B16-F10 cell line.

Figure S47. Results of cytotoxic activity of **3** against B16-F10 cell line.

Figure S48. Results of cytotoxic activity of **4** against B16-F10 cell line.

Figure S49. Results of cytotoxic activity of **5** against B16-F10 cell line.

Figure S50. Results of cytotoxic activity of **6** against B16-F10 cell line.

Figure S51. Results of cytotoxic activity of **7** against B16-F10 cell line.

Figure S52. Results of cytotoxic activity of **1** against CV-1 cell line.

Figure S53. Results of cytotoxic activity of **2** against CV-1 cell line.

Figure S54. Results of cytotoxic activity of **3** against CV-1 cell line.

Figure S55. Results of cytotoxic activity of **4** against CV-1 cell line.

Figure S56. Results of cytotoxic activity of **5** against CV-1 cell line.

Figure S57. Results of cytotoxic activity of **6** against CV-1 cell line.

Figure S58. Results of cytotoxic activity of **7** against CV-1 cell line.

Figure S59. TLC profile of compounds **1-7**.

Figure S1. HRTOFMS Spectrum of **1**.

Single Mass Analysis

Tolerance = 5.0 mDa / DBE: min = -1.5, max = 50.0

Element prediction: Off

Number of isotope peaks used for i-FIT = 3

Monoisotopic Mass, Even Electron Ions

109 formula(e) evaluated with 1 results within limits (all results (up to 1000) for each mass)

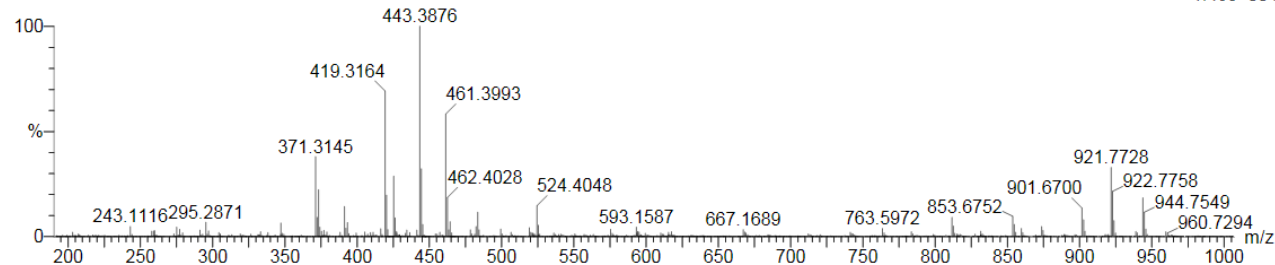
Elements Used:

C: 0-500 H: 0-1000 O: 0-200

DAMMARANE KINDI 4 (0.085) Cm (2:5)

TOF MS ES+

1.46e+004



Minimum: -1.5
Maximum: 5.0 10.0 50.0

Mass	Calc. Mass	mDa	PPM	DBE	i-FIT	i-FIT (Norm)	Formula
461.3993	461.3995	-0.2	-0.4	4.5	93.2	0.0	C30 H53 O3

Figure S2. FTIR Spectrum of **1**.

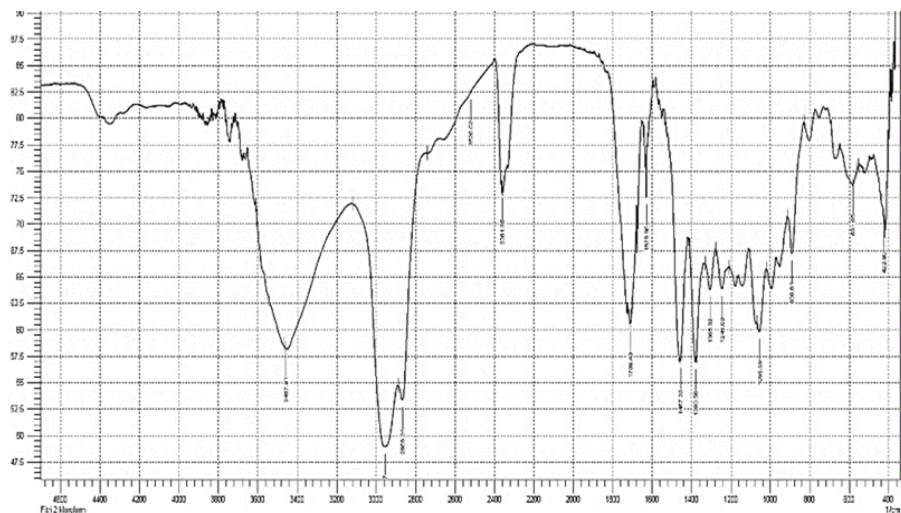


Figure S3. ^1H -NMR Spectrum of **1** (500 MHz in CDCl_3).

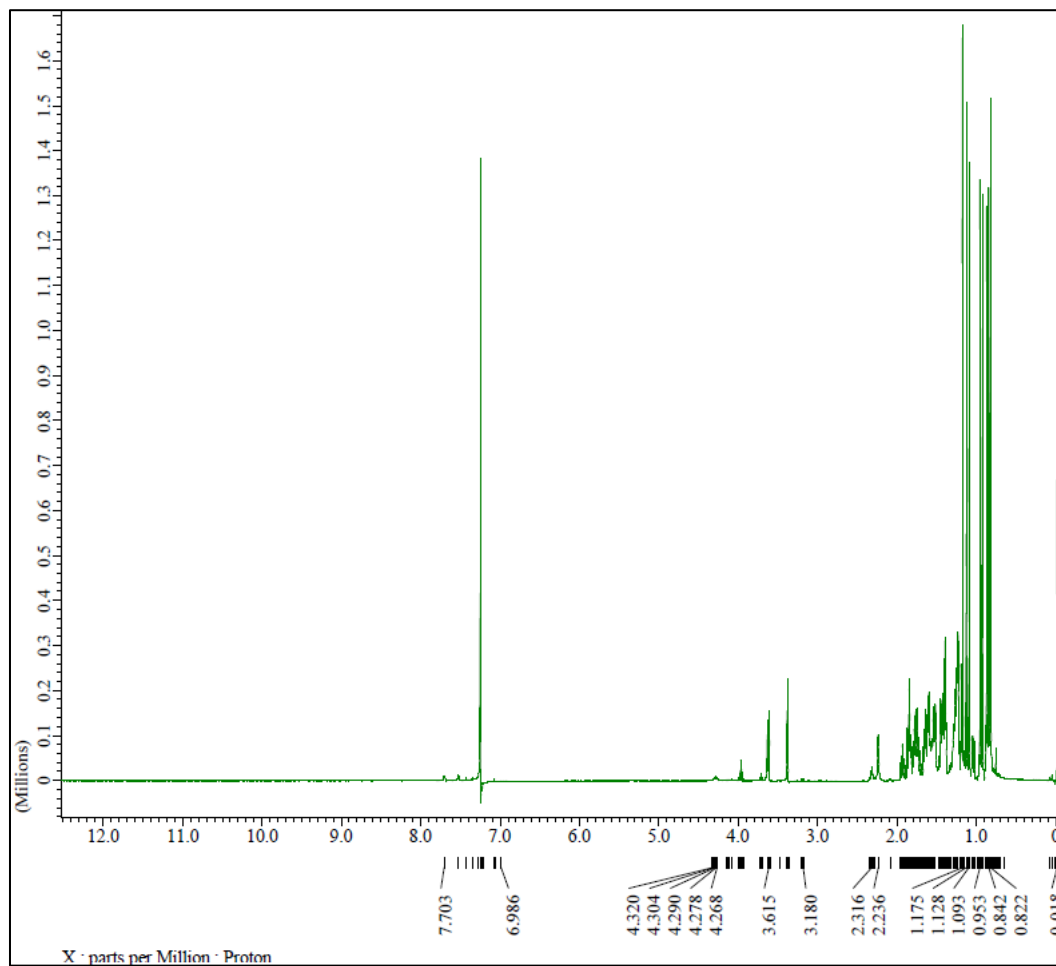


Figure S4. ^{13}C -NMR and DEPT-135 $^\circ$ Spectrum of **1** (125 MHz in CDCl_3).

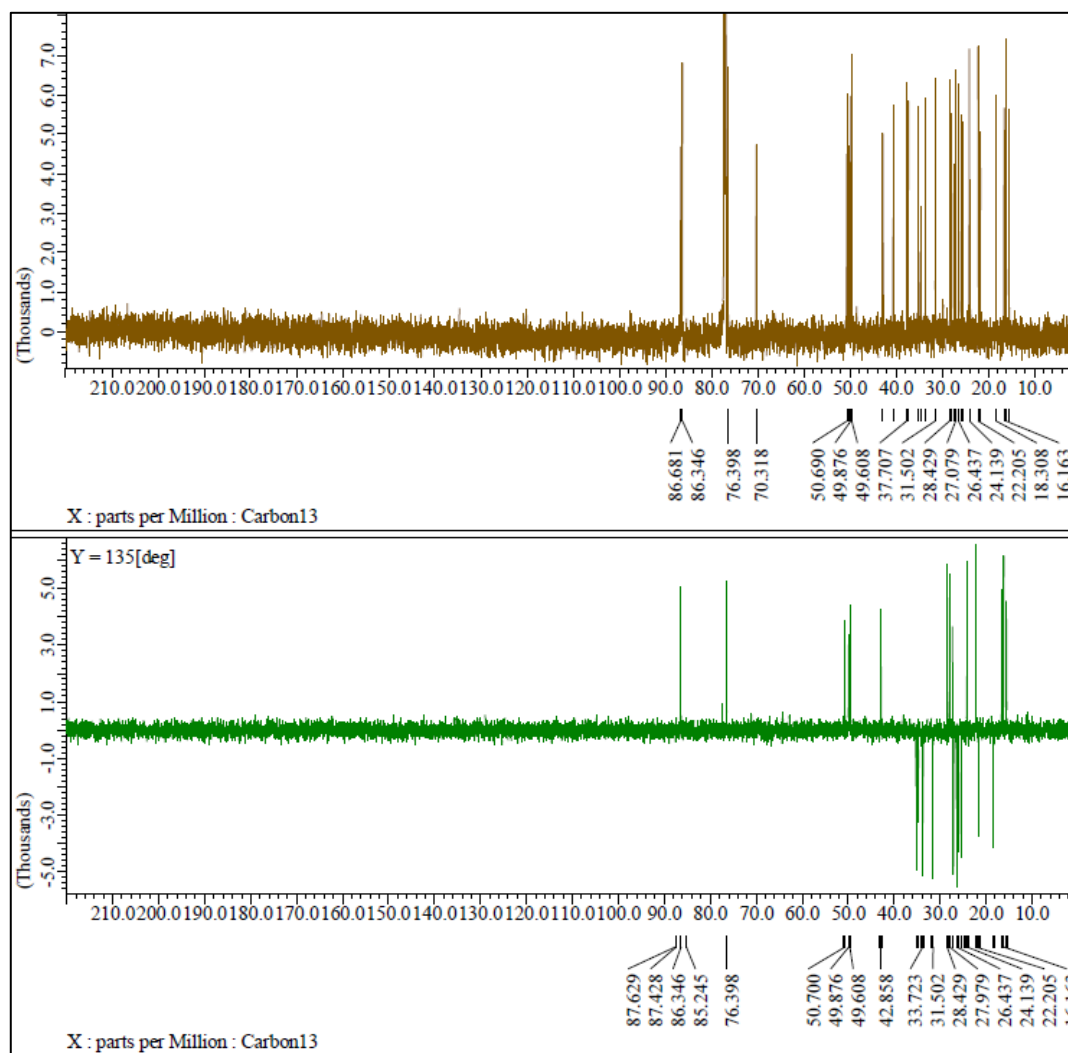


Figure S5. HMQC Spectrum of **1**.

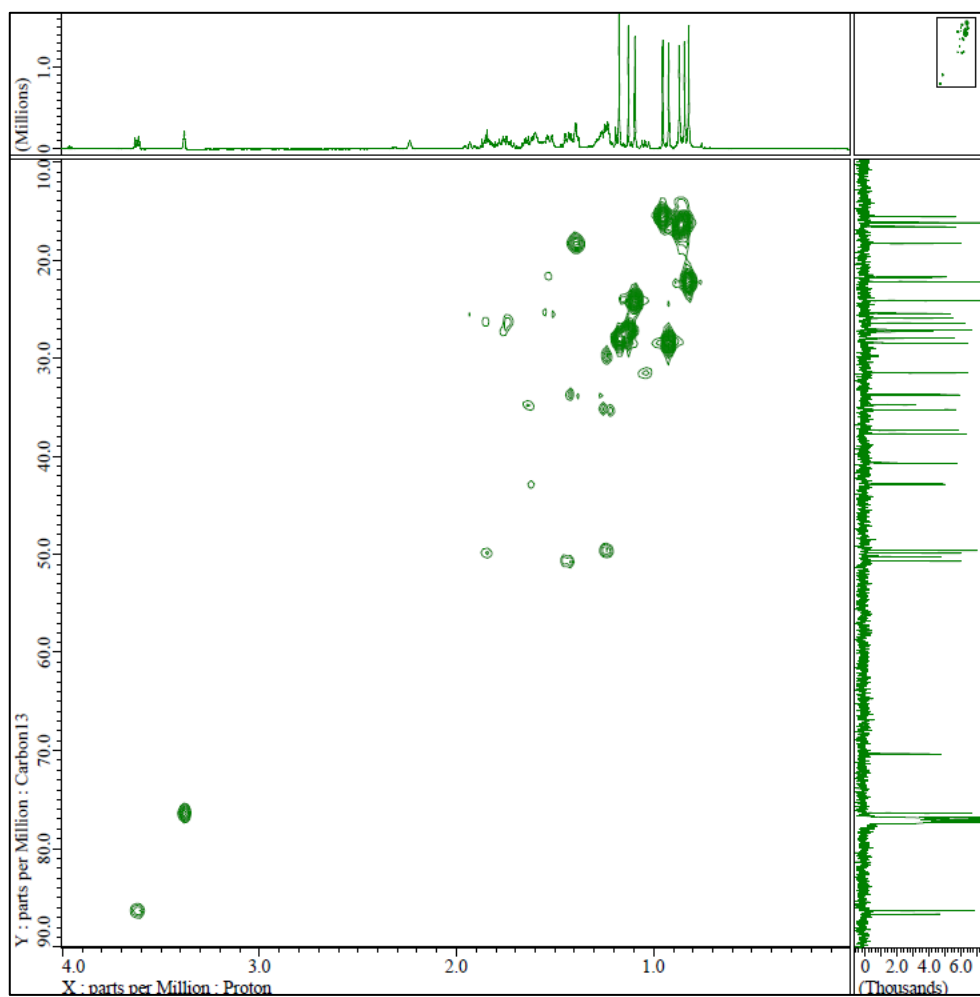


Figure S6. HMBC Spectrum of **1**.

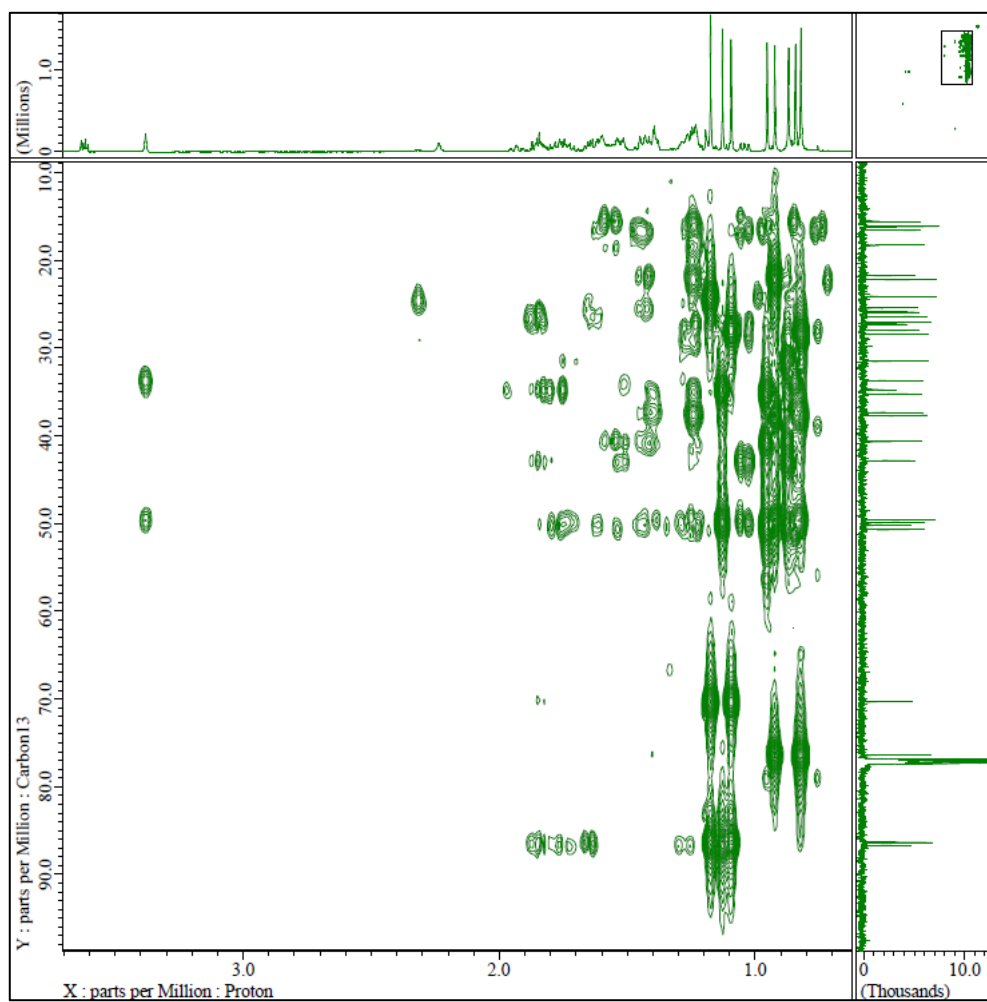


Figure S7. ^1H - ^1H -COSY Spectrum of **1**.

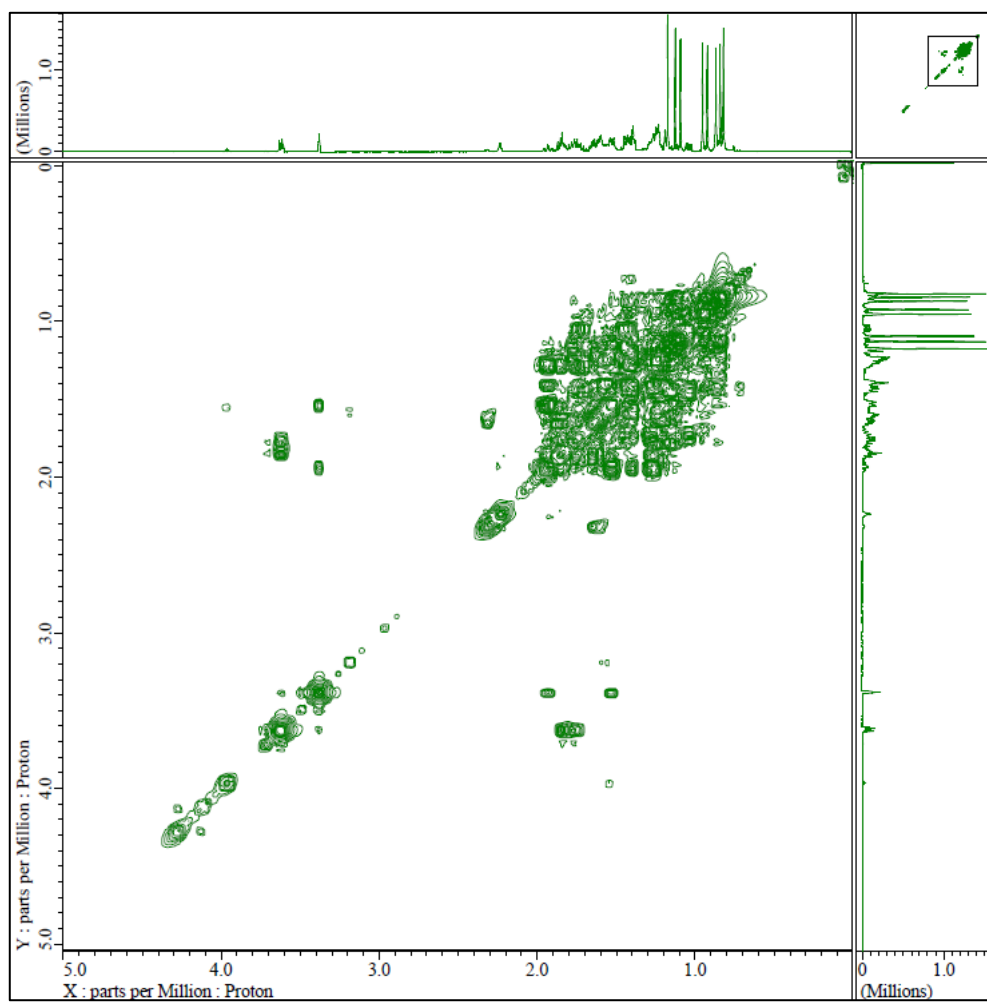


Figure S8. HRTOFMS Spectrum of 2.

Single Mass Analysis

Tolerance = 50.0 mDa / DBE: min = -1.5, max = 50.0

Element prediction: Off

Number of isotope peaks used for i-FIT = 3

Monoisotopic Mass, Even Electron Ions

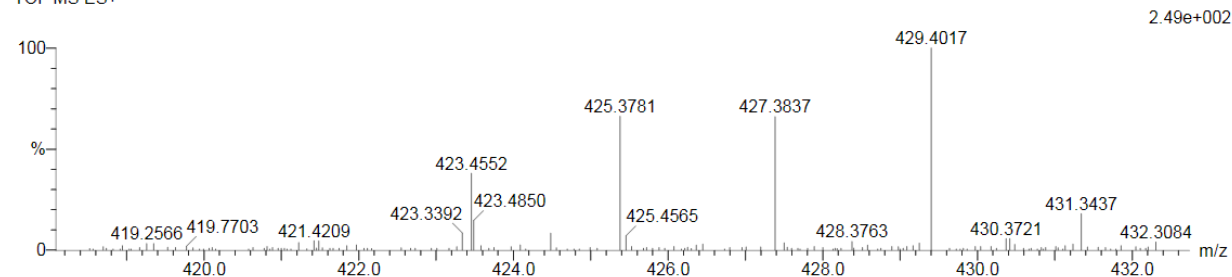
95 formula(e) evaluated with 6 results within limits (up to 50 closest results for each mass)

Elements Used:

C: 0-500 H: 0-1000 O: 0-200

KIN C 4 21 (0.376) Cm (19.21)

TOF MS ES+



Minimum: -1.5
Maximum: 50.0 10.0 50.0

Mass	Calc. Mass	mDa	PPM	DBE	i-FIT	i-FIT (Norm)	Formula
425.3781	425.3783	-0.2	-0.5	6.5	81.9	1.2	C30 H49 O

Figure S9. FTIR Spectrum of 2.

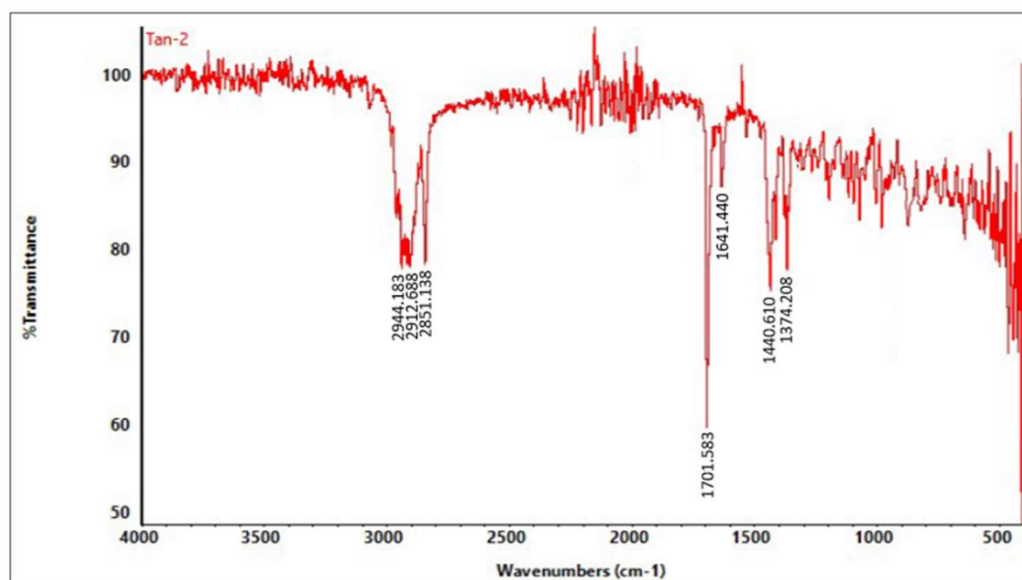


Figure S10. ^1H -NMR Spectrum of **2** (500 MHz in CDCl_3).

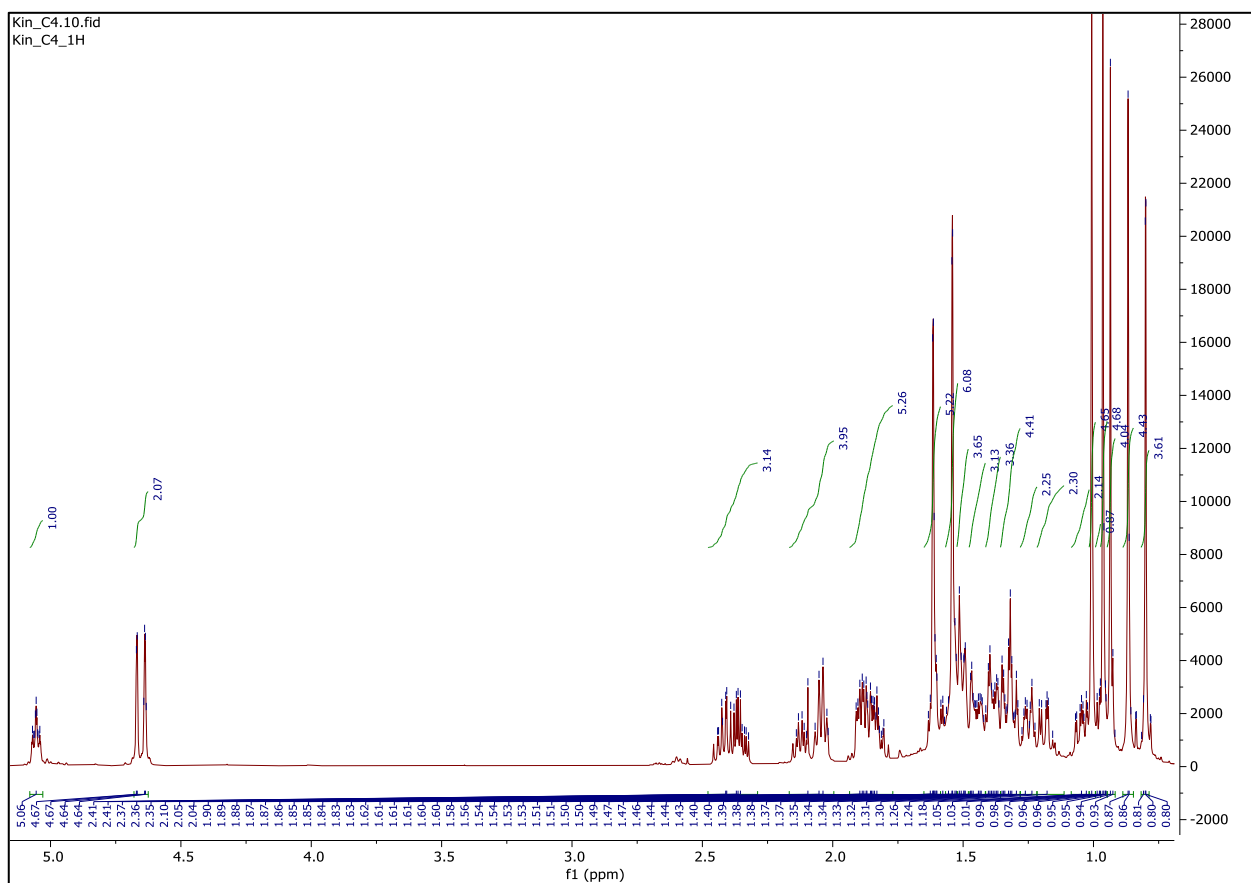


Figure S11. ^{13}C -NMR and DEPT-135° Spectrum of **2** (125 MHz in CDCl_3).

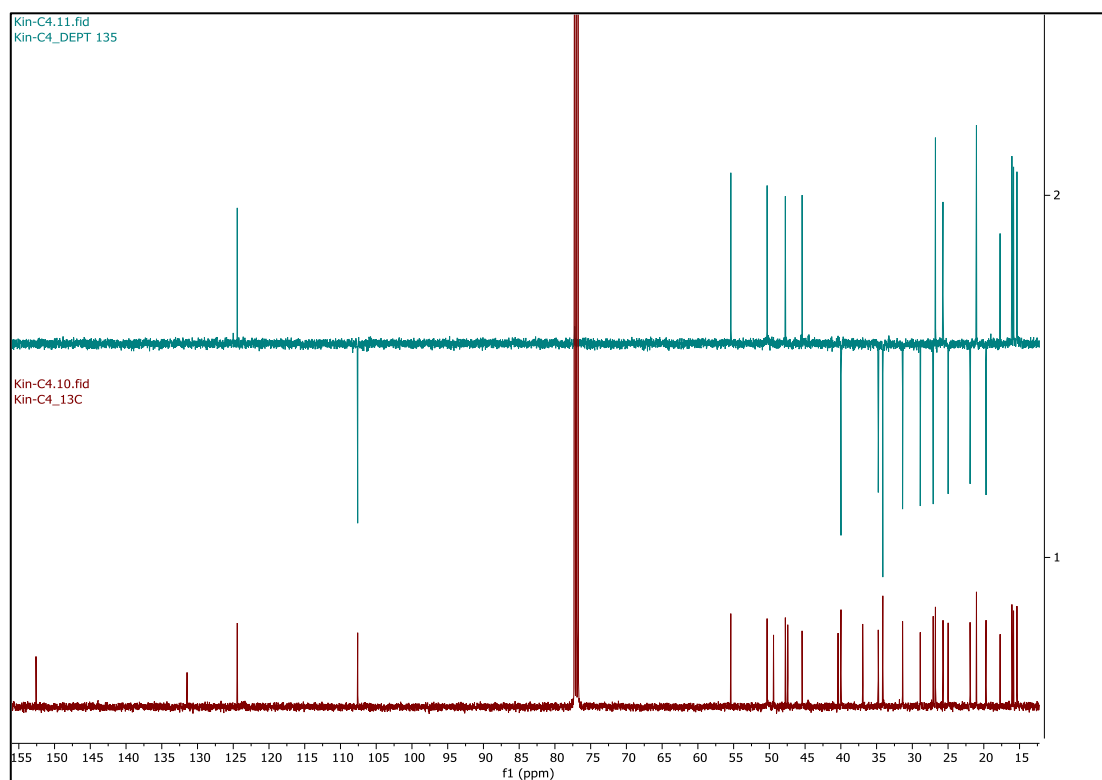


Figure S12. HRTOFMS Spectrum of **3**.

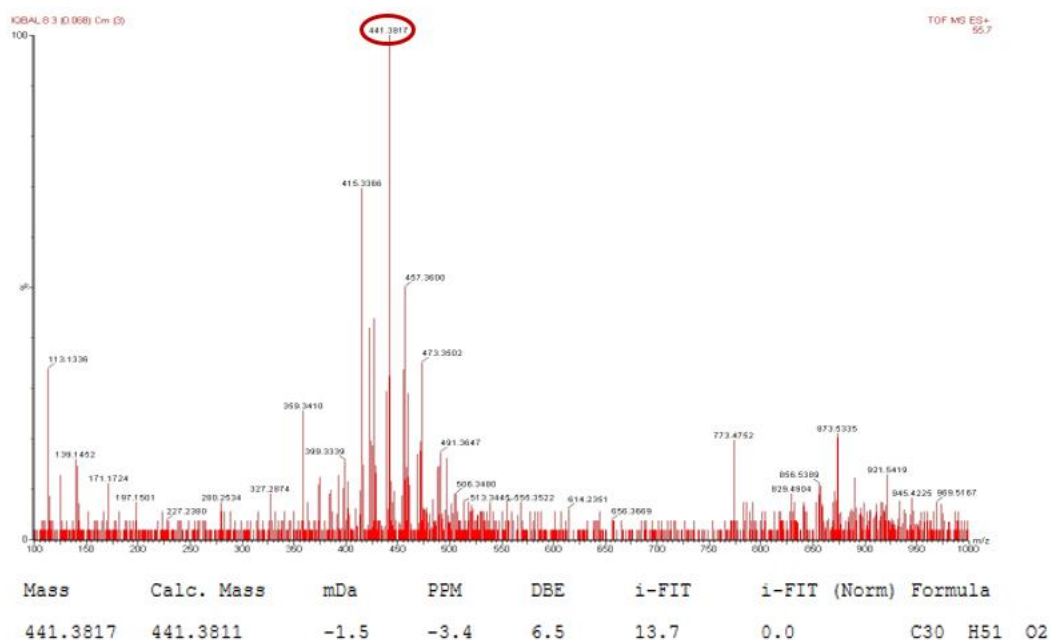


Figure S13. FTIR Spectrum of **3**.

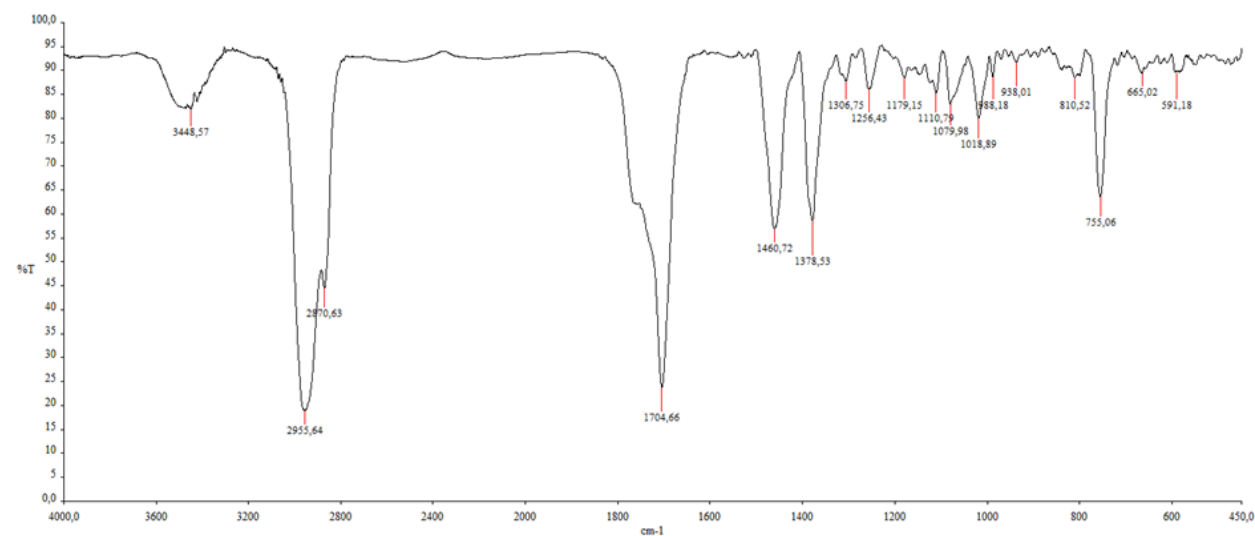


Figure S14. ^1H -NMR Spectrum of **3** (500 MHz in CDCl_3).

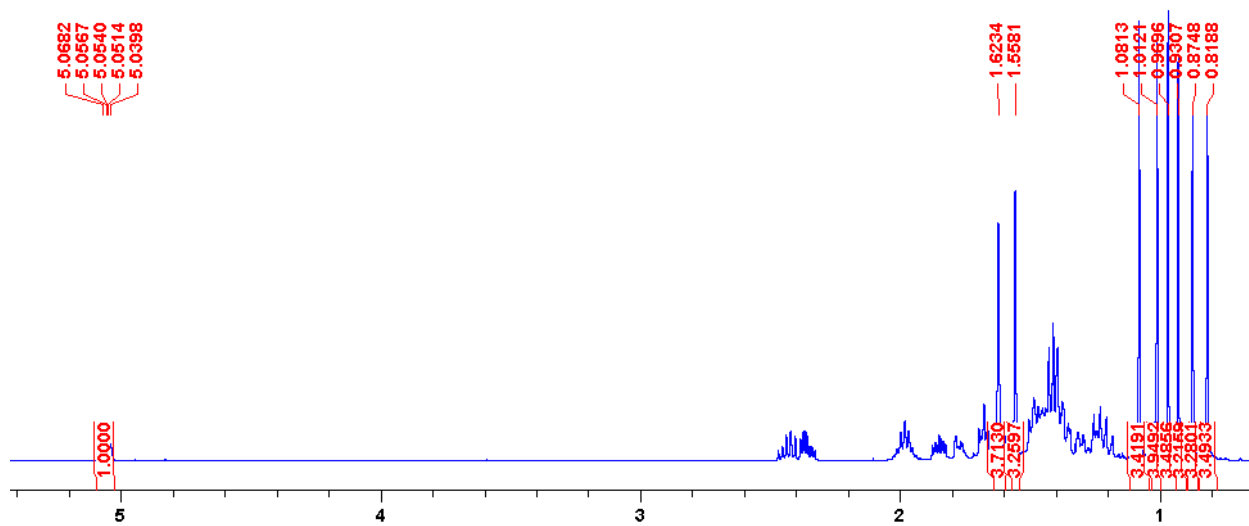


Figure S15. ^{13}C -NMR and DEPT-135 $^\circ$ Spectrum of **3** (125 MHz in CDCl_3).

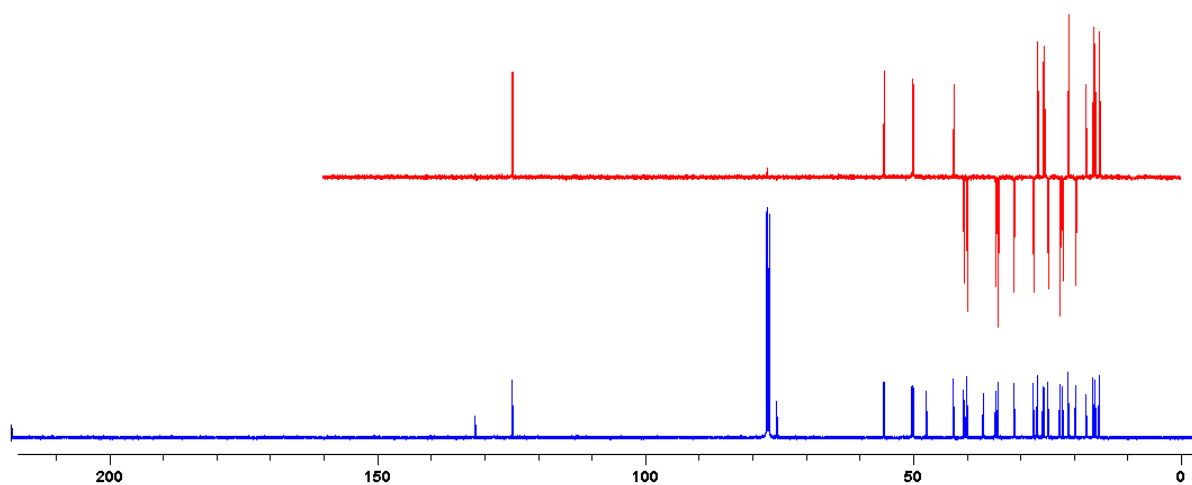


Figure S16. HRTOFMS Spectrum of **4**.

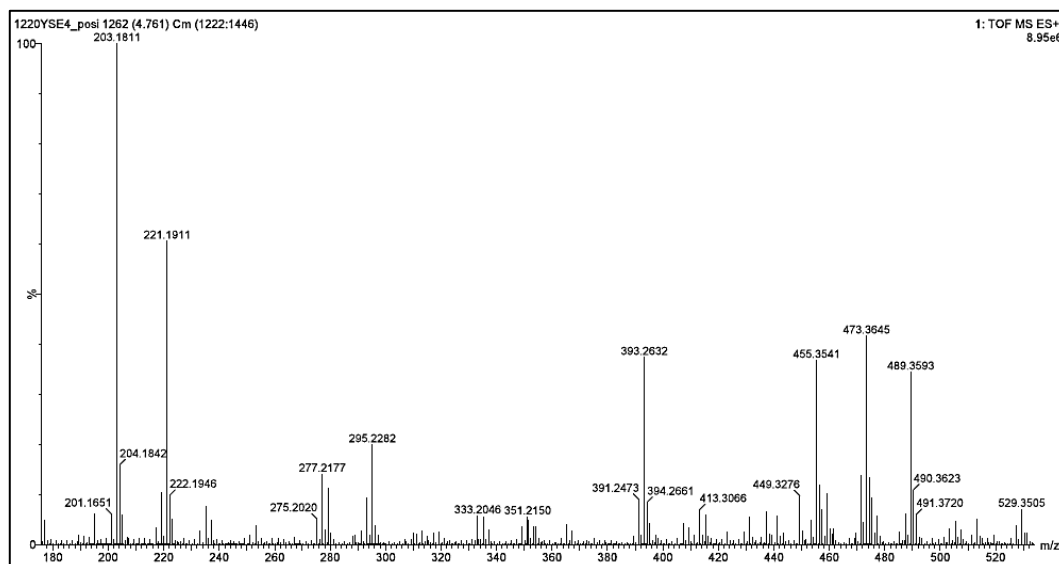


Figure S17. FTIR Spectrum of **4**.

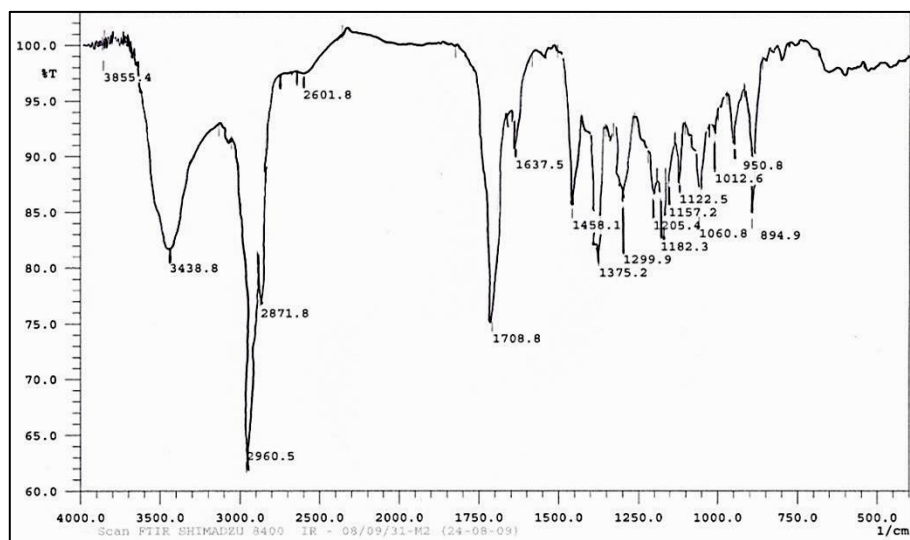


Figure S18. ^1H -NMR Spectrum of **4** (500 MHz in CDCl_3).

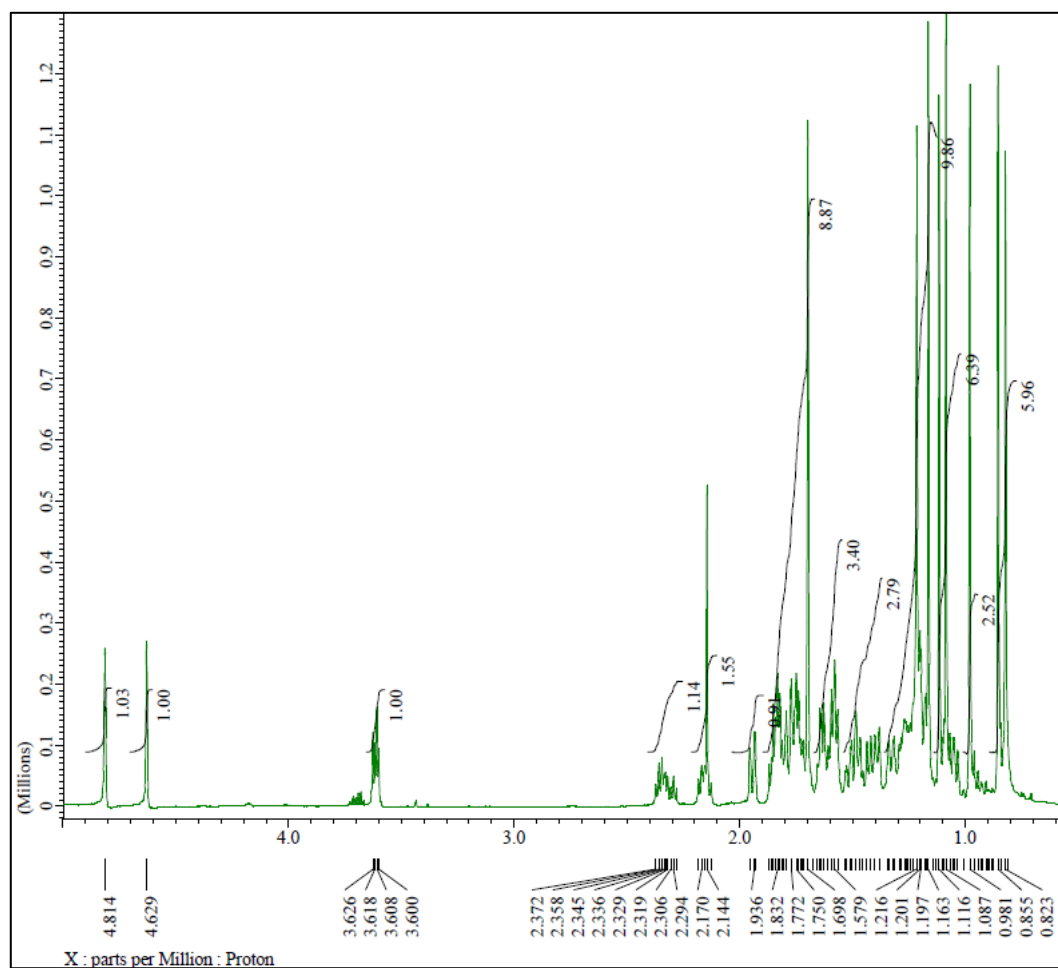


Figure S19. ^{13}C -NMR and DEPT-135° Spectrum of **4** (125 MHz in CDCl_3).

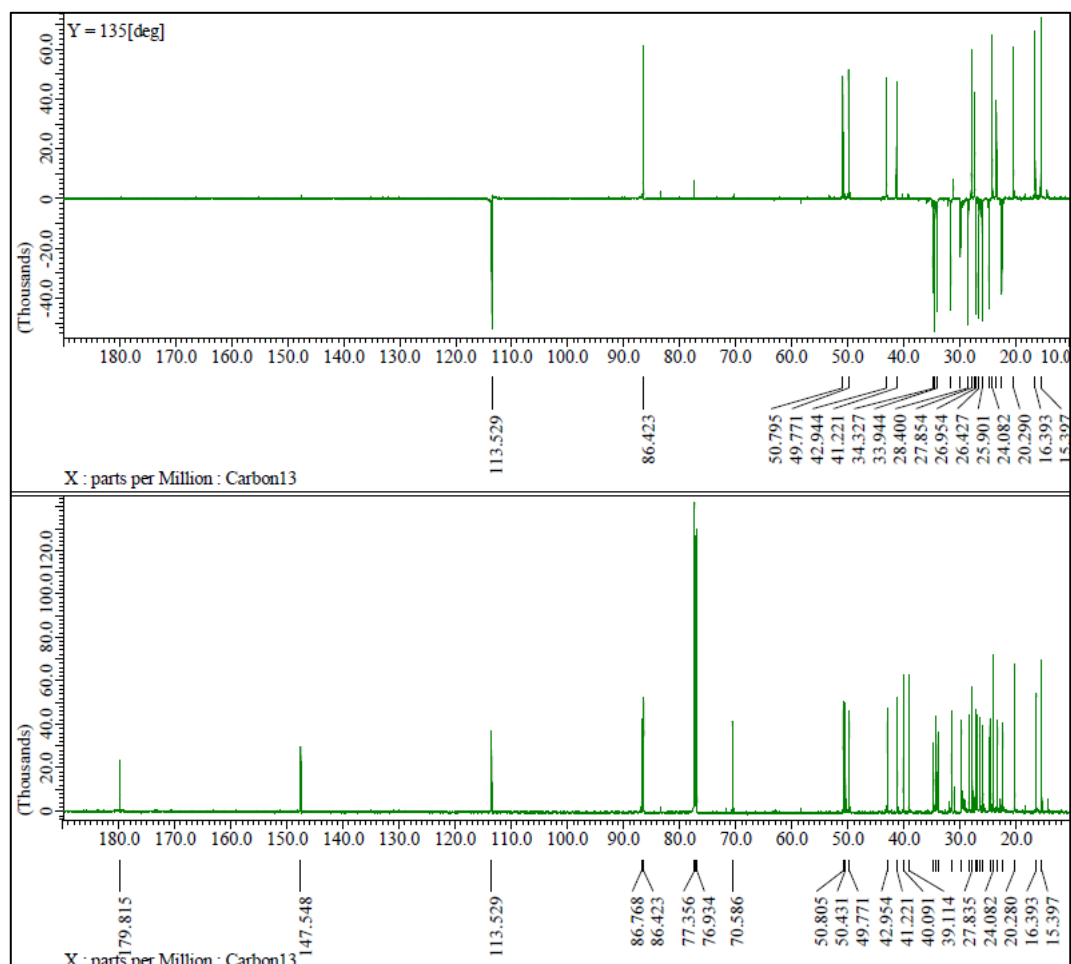


Figure S20. HMQC Spectrum of **4**.

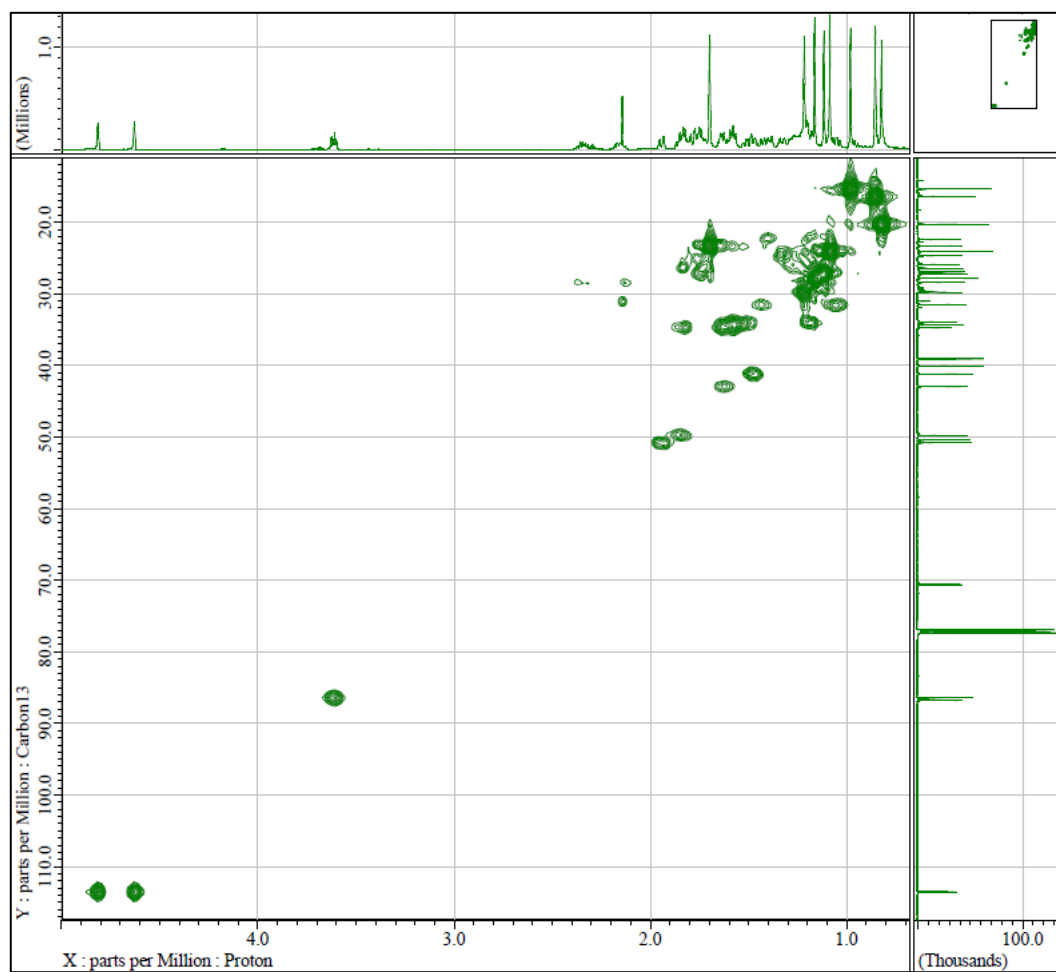


Figure S21. HMBC Spectrum of **4**.

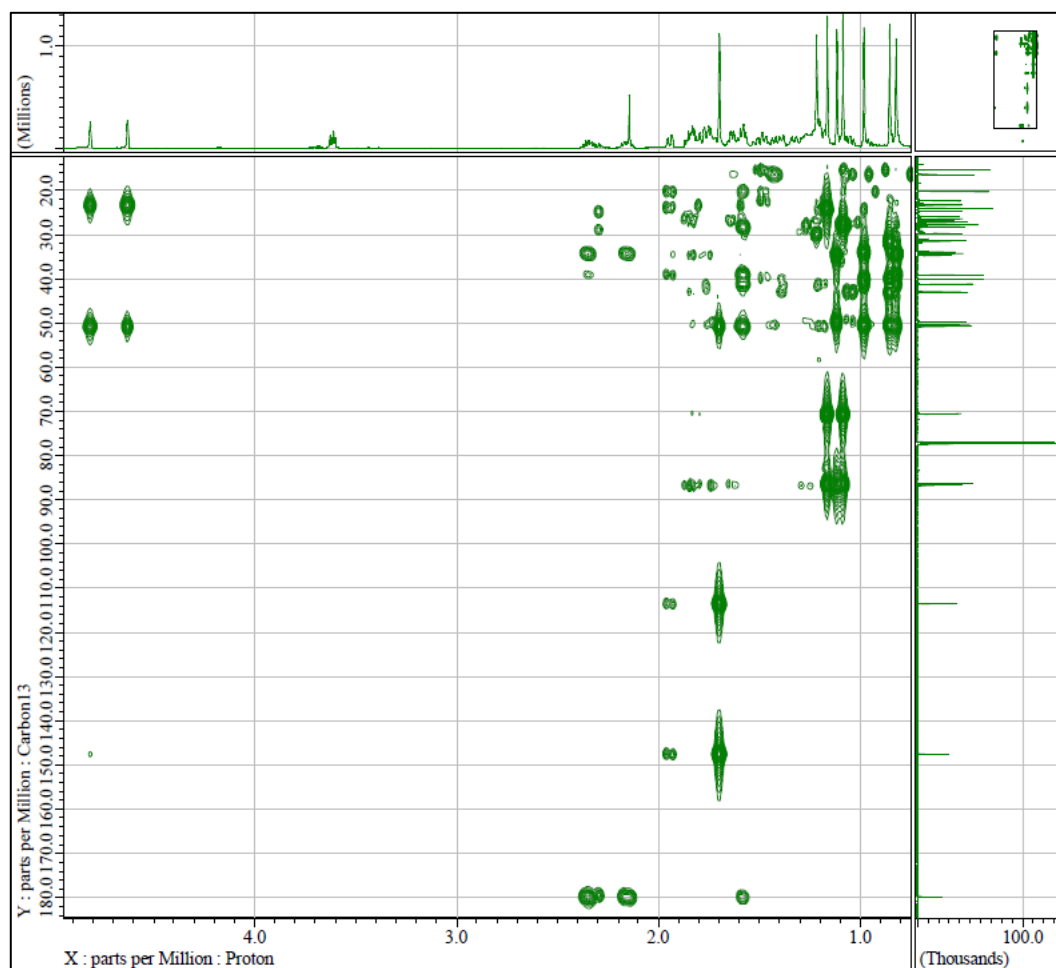


Figure S22. ^1H - ^1H -COSY Spectrum of **4**.

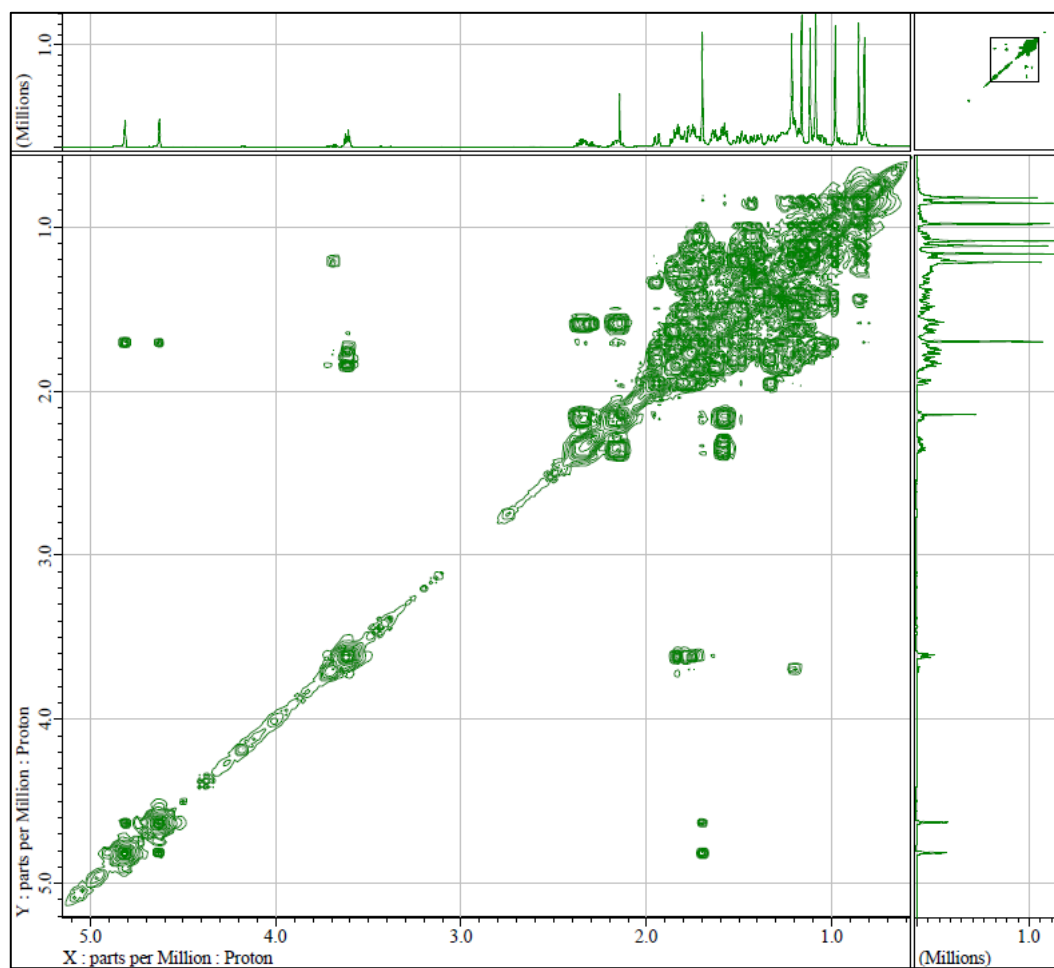


Figure S23. HRTOFMS Spectrum of **5**.

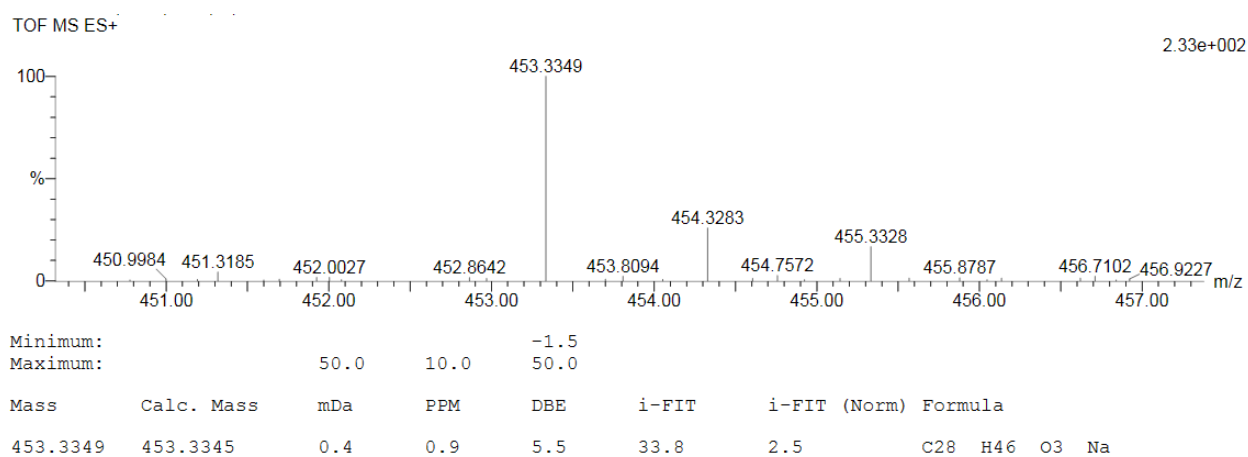


Figure S24. FTIR Spectrum of **5**.

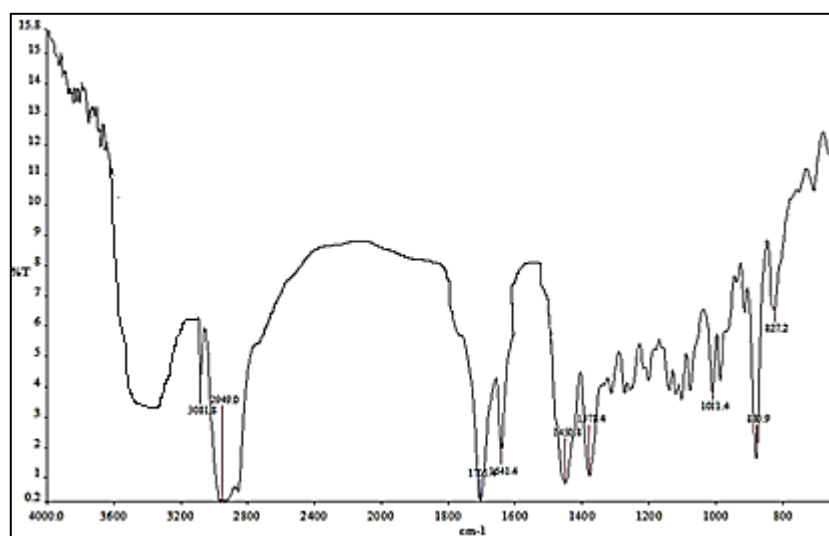


Figure S25. ^1H -NMR Spectrum of **5** (500 MHz in CDCl_3).

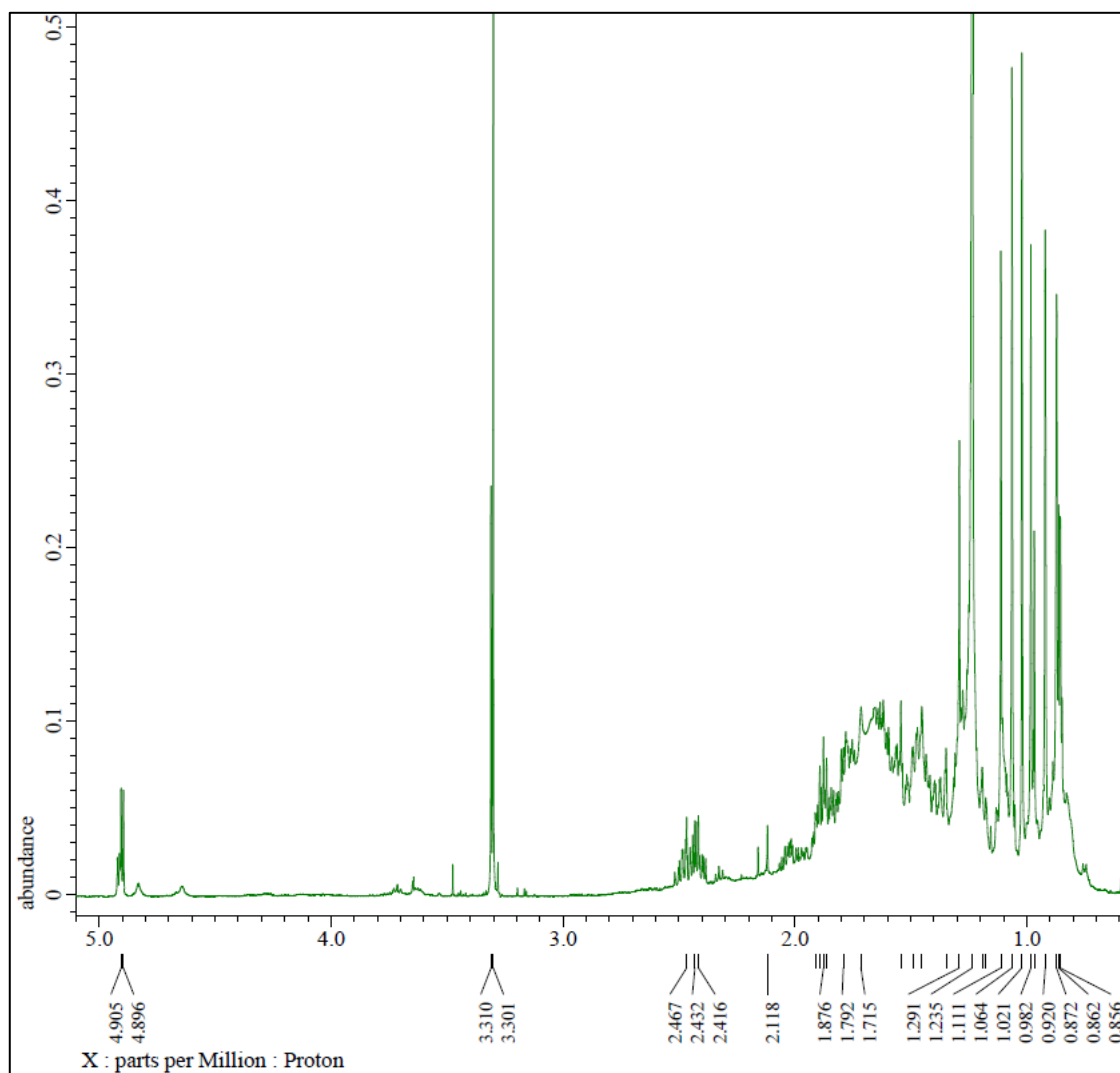


Figure S26. ^{13}C -NMR and DEPT-135° Spectrum of **5** (125 MHz in CDCl_3).

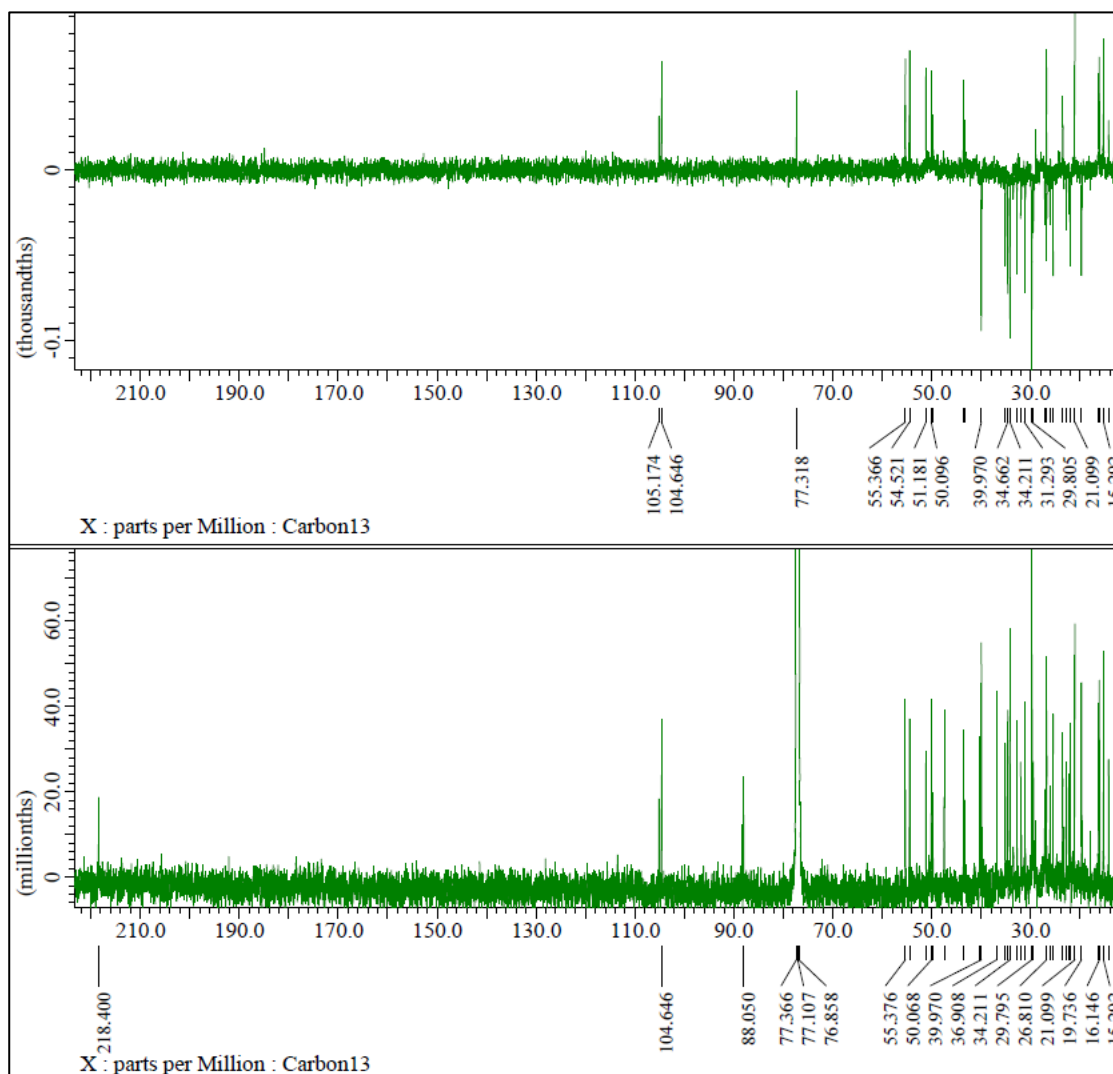


Figure S27. HMQC Spectrum of **5**.

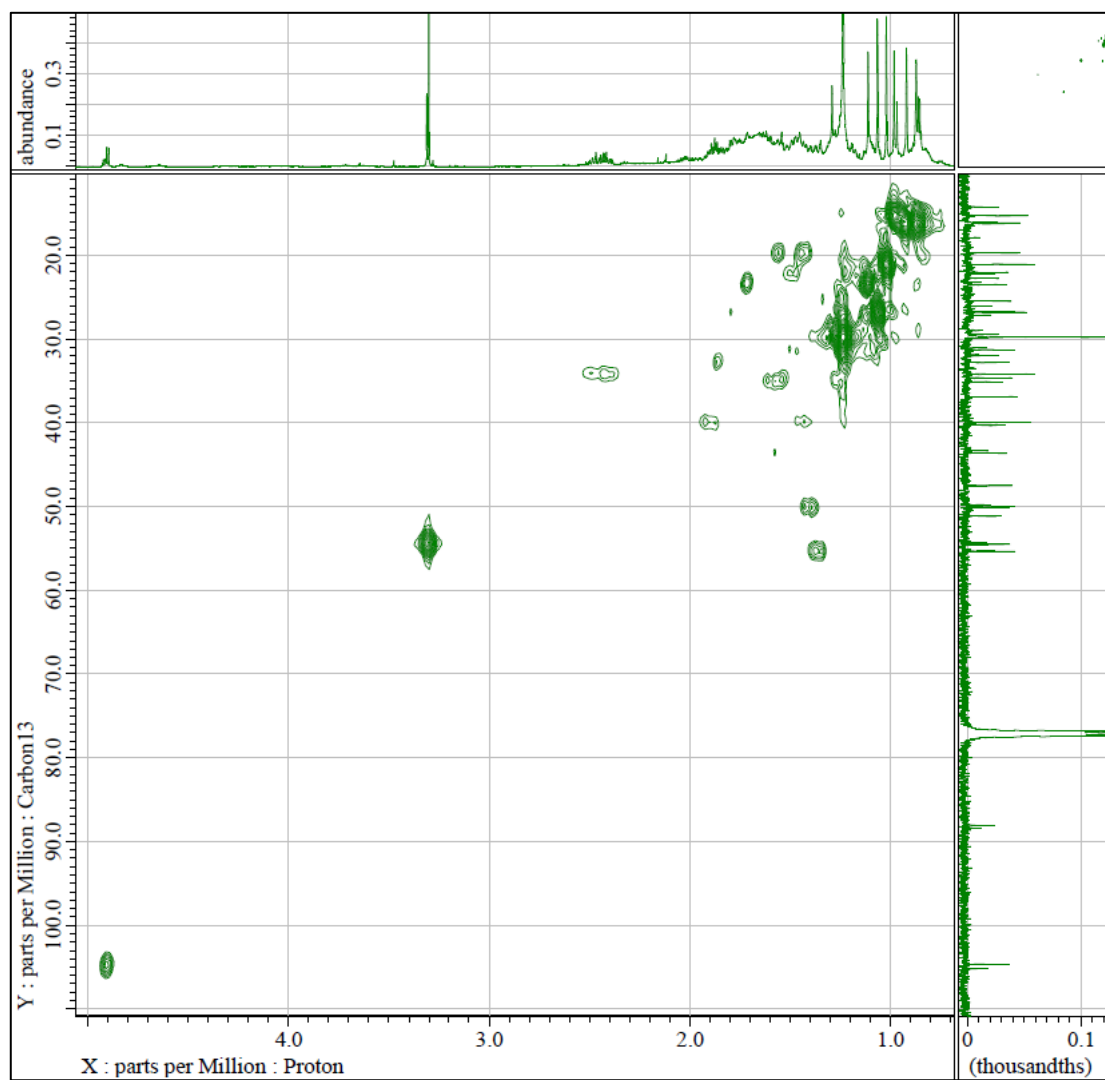


Figure S28. HMBC Spectrum of **5**.

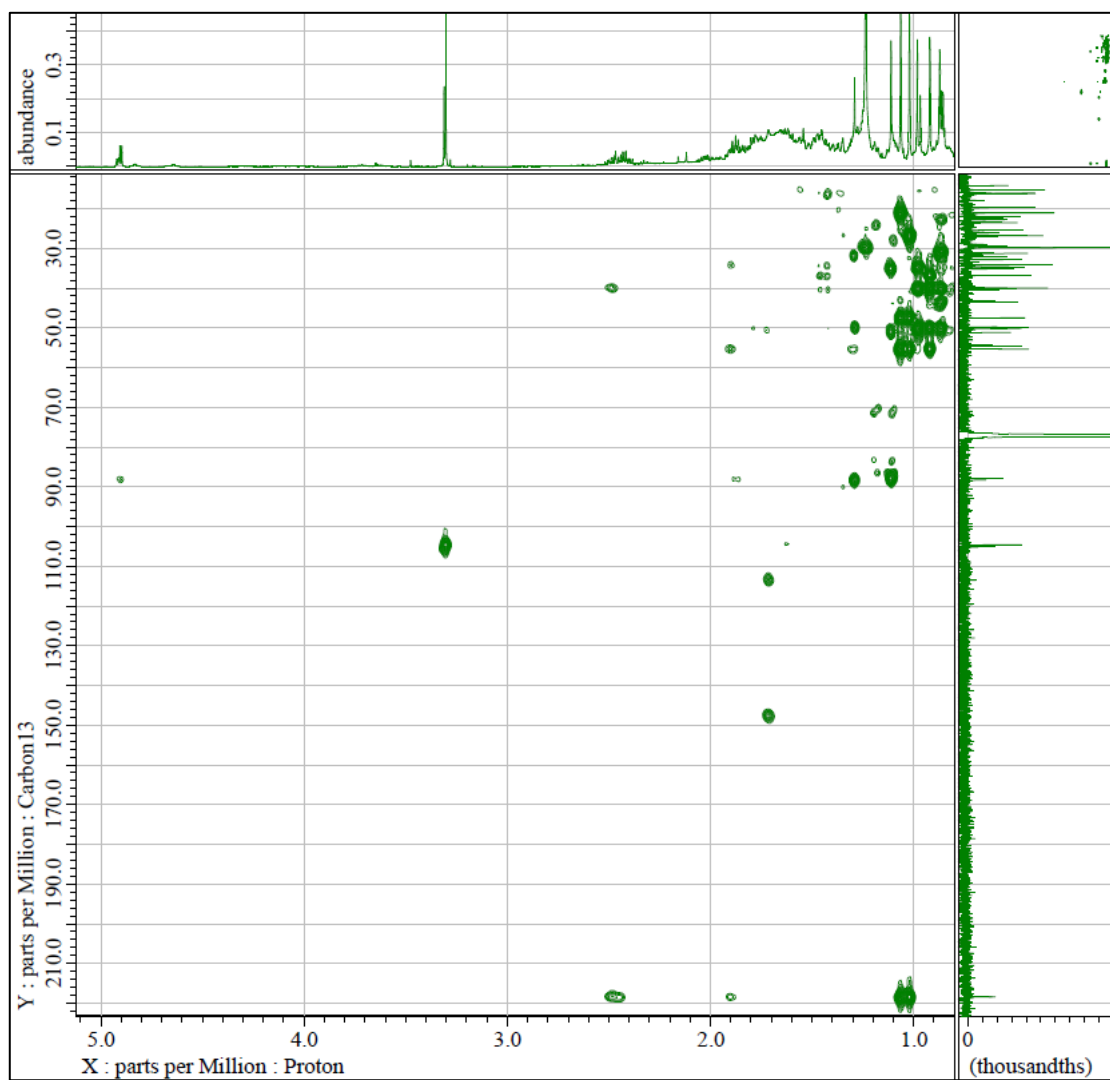


Figure S29. ^1H - ^1H -COSY Spectrum of **5**.

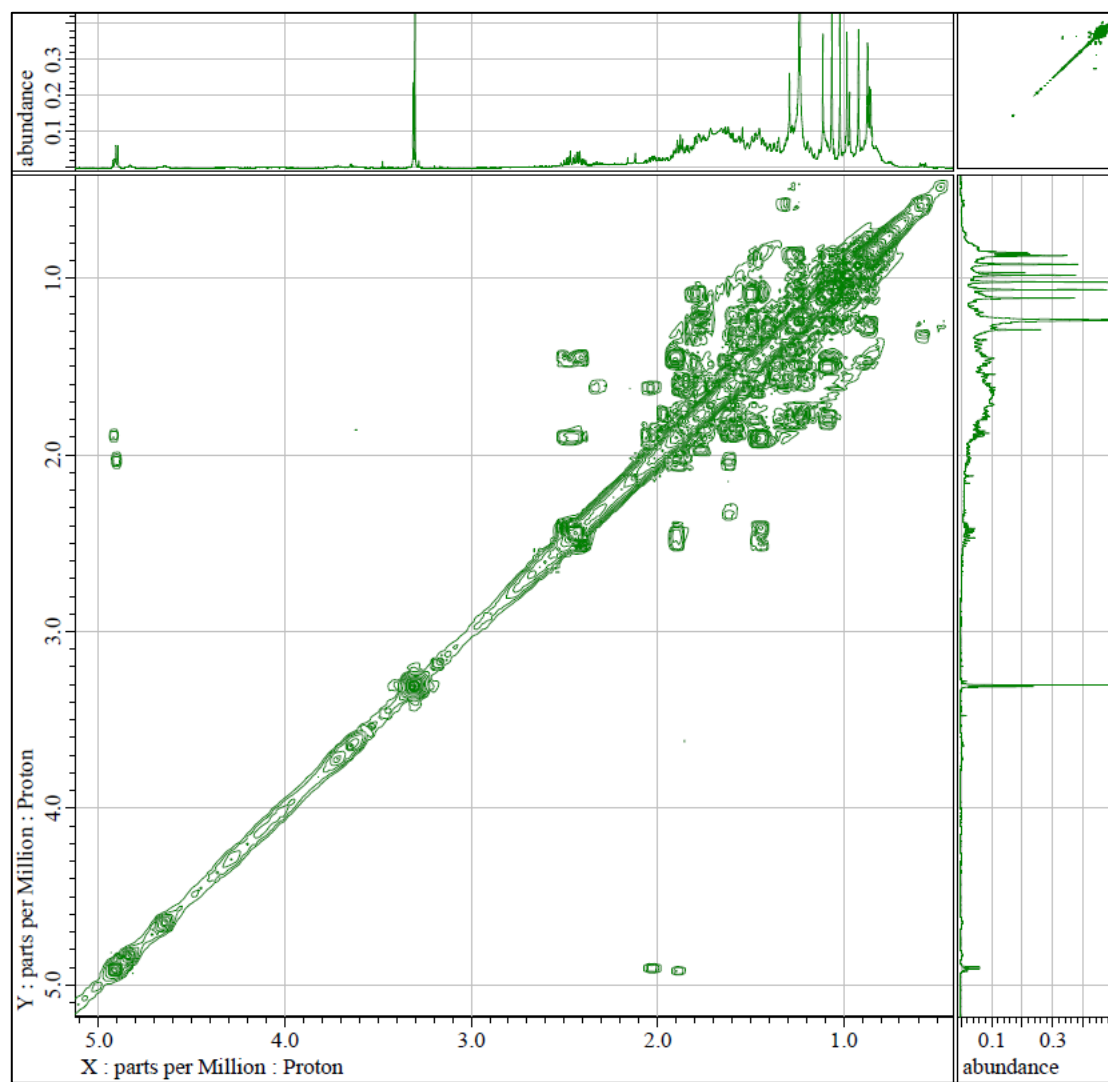


Figure S30. HRTOFMS Spectrum of 6.

Single Mass Analysis

Tolerance = 50.0 mDa / DBE: min = -1.5, max = 50.0

Element prediction: Off

Number of isotope peaks used for i-FIT = 3

Monoisotopic Mass, Even Electron Ions

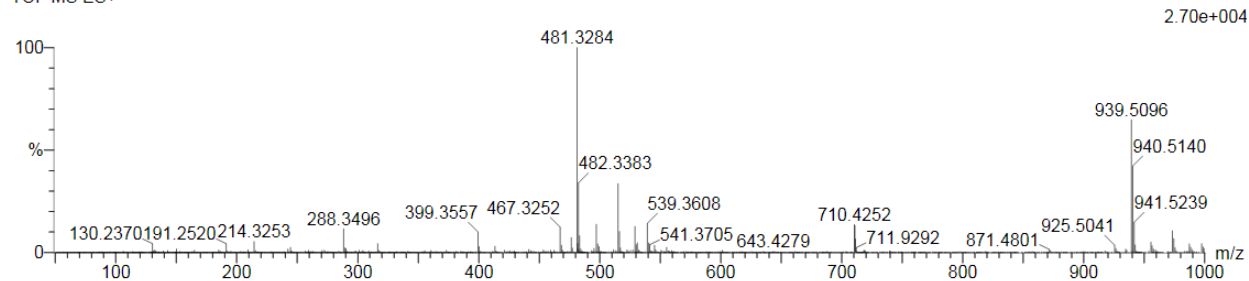
222 formula(e) evaluated with 21 results within limits (up to 50 closest results for each mass)

Elements Used:

C: 0-500 H: 0-1000 O: 0-200 Na: 0-1

KIN C 15 22 (0.393) Cm (22)

TOF MS ES+



Minimum: -1.5
Maximum: 50.0 10.0 50.0

Mass	Calc. Mass	mDa	PPM	DBE	i-FIT	i-FIT (Norm)	Formula
481.3284	481.3294	-1.0	-2.1	6.5	99.1	2.9	C ₂₉ H ₄₆ O ₄ Na

Figure S31. FTIR Spectrum of 6.

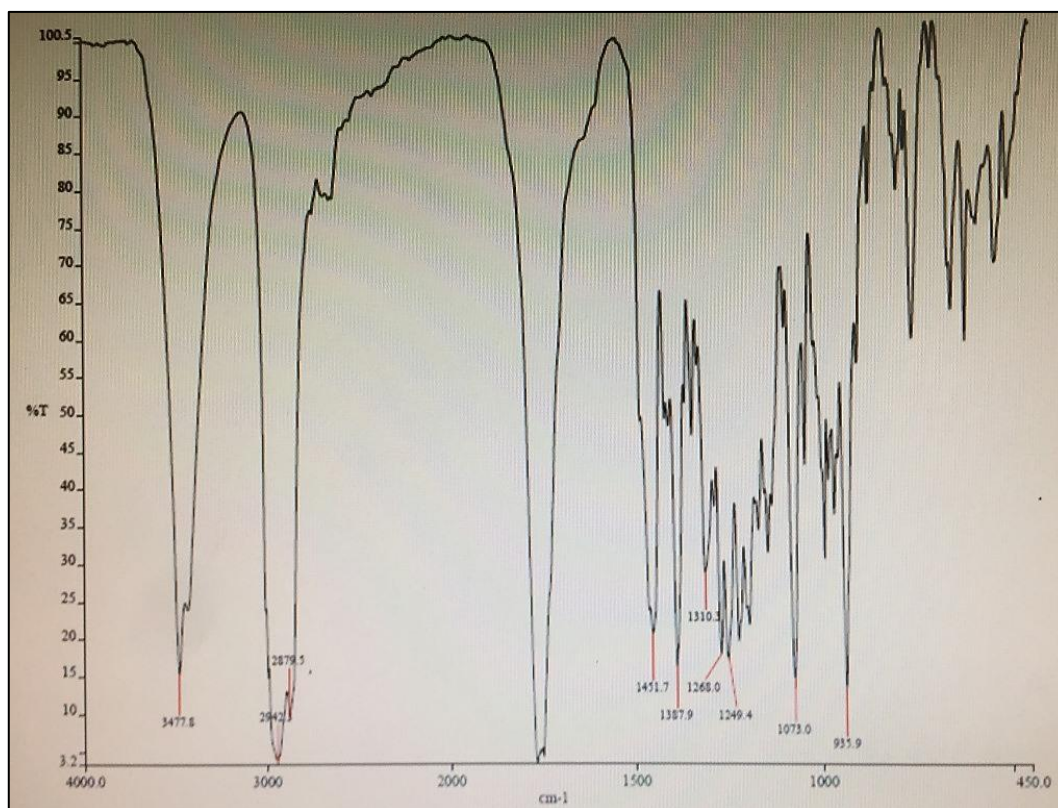


Figure S32. ^1H -NMR Spectrum of **6** (500 MHz in CDCl_3).

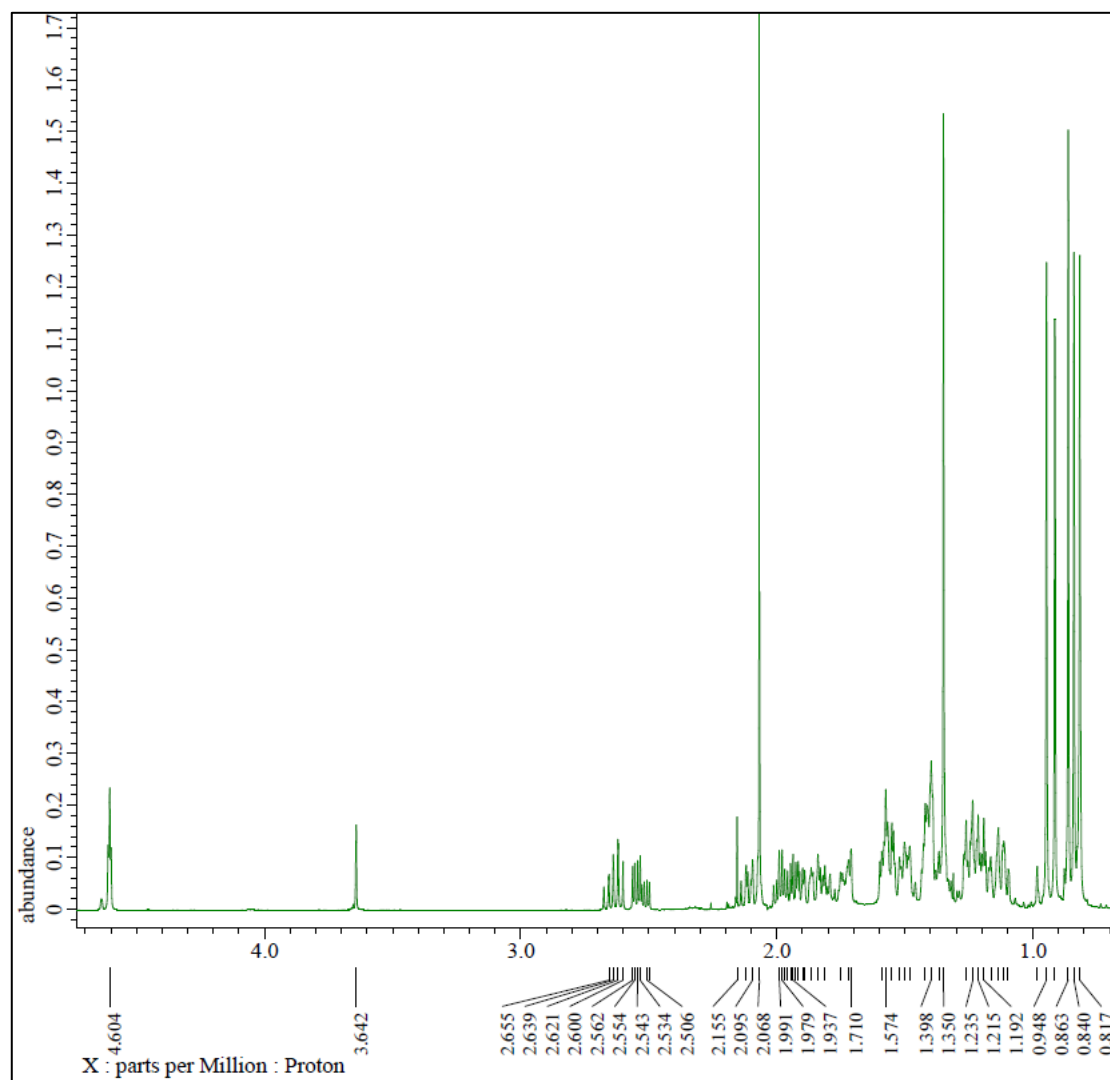


Figure S33. ^{13}C -NMR and DEPT-135° Spectrum of **6** (125 MHz in CDCl_3).

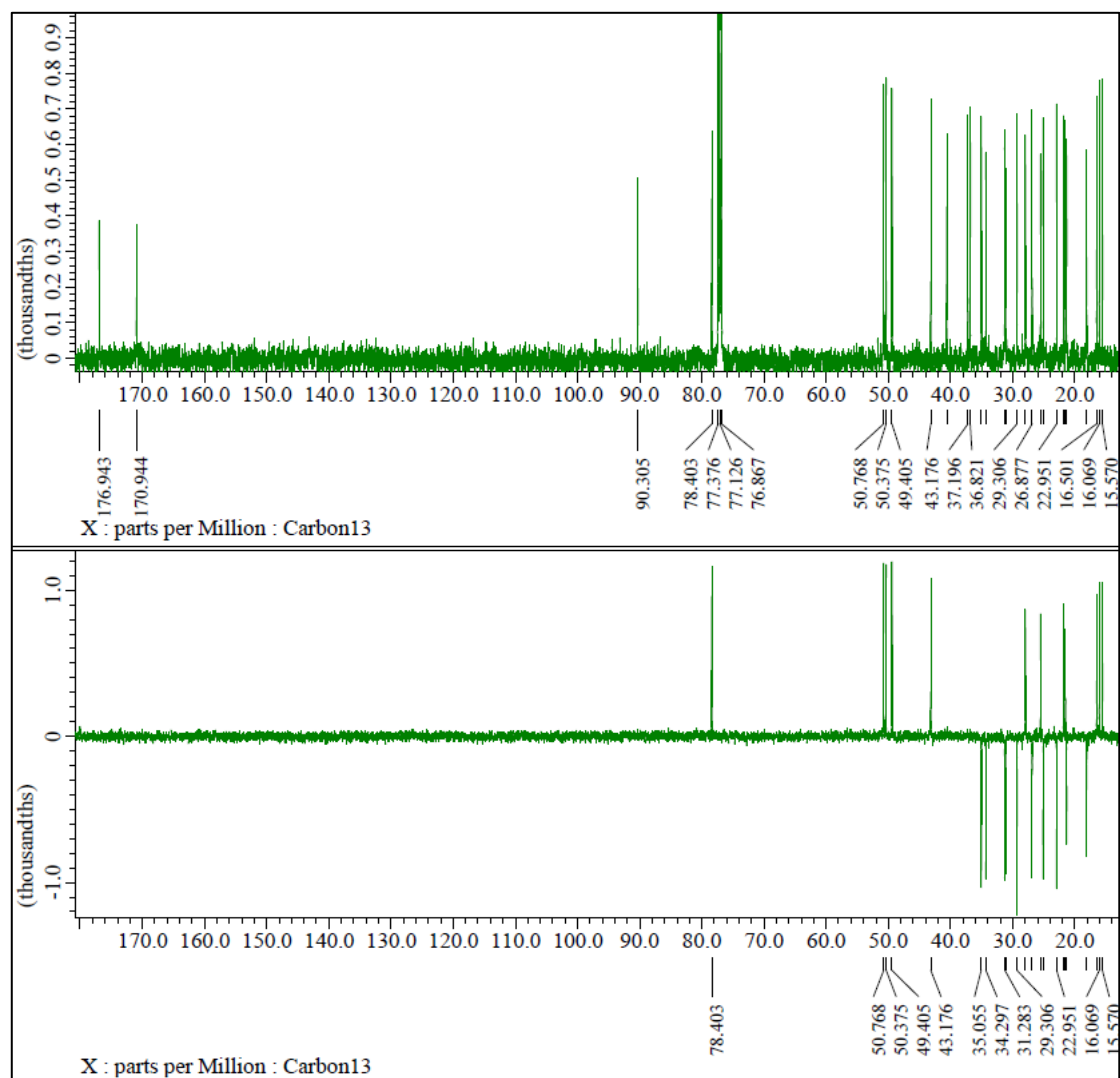


Figure S34. HRTOFMS Spectrum of **7**.

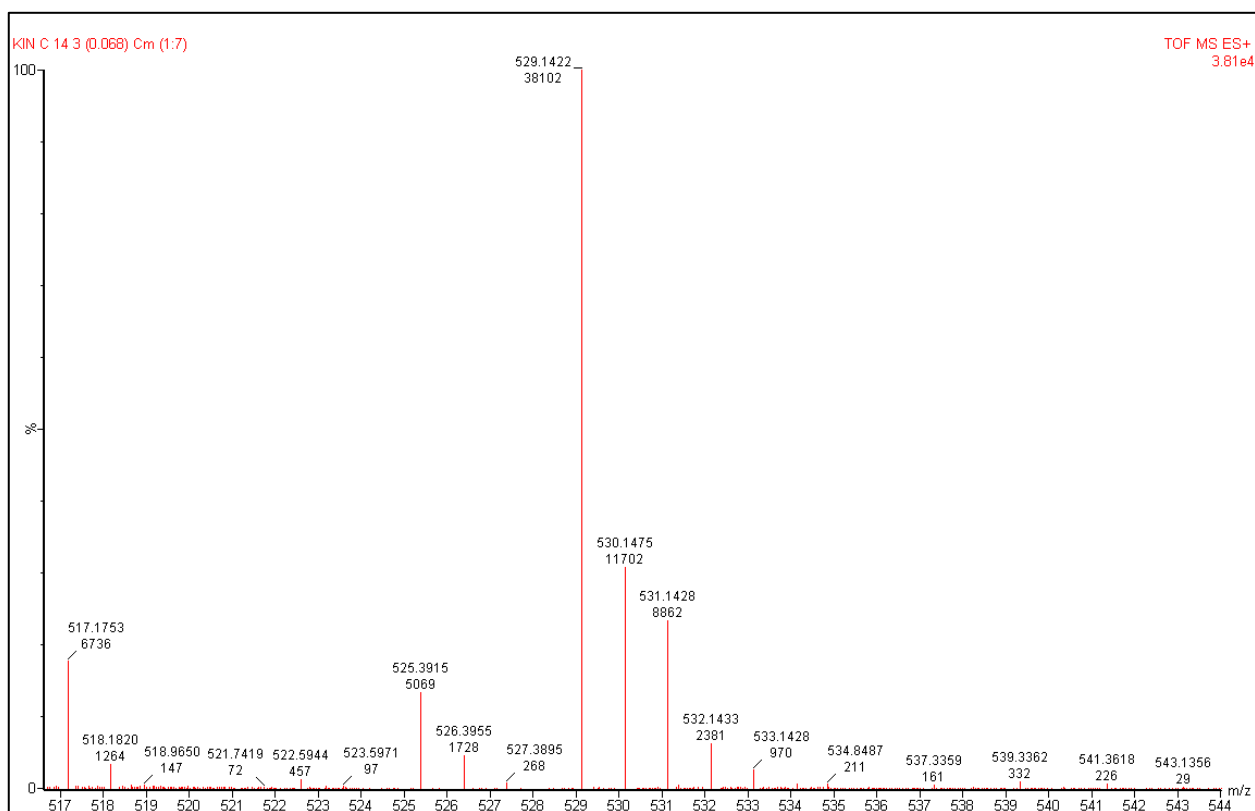


Figure S35. FTIR Spectrum of **7**.

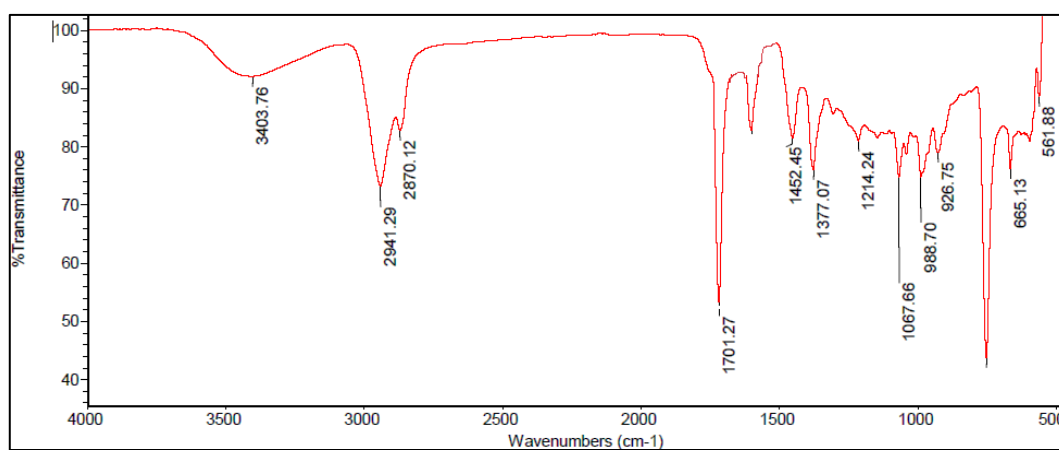


Figure S36. ^1H -NMR Spectrum of **7** (500 MHz in CDCl_3).

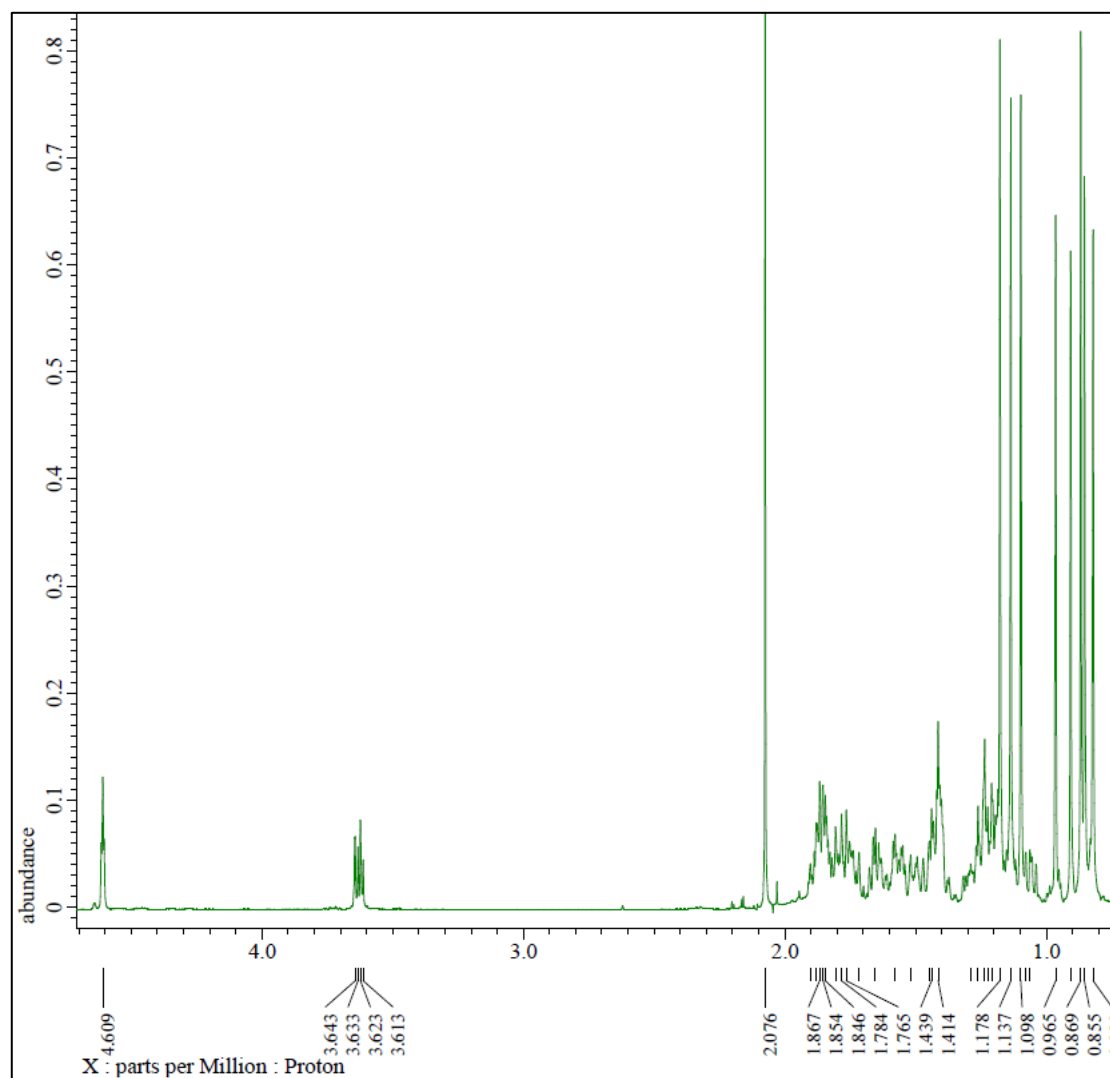


Figure S37. ^{13}C -NMR and DEPT-135° Spectrum of **7** (125 MHz in CDCl_3).

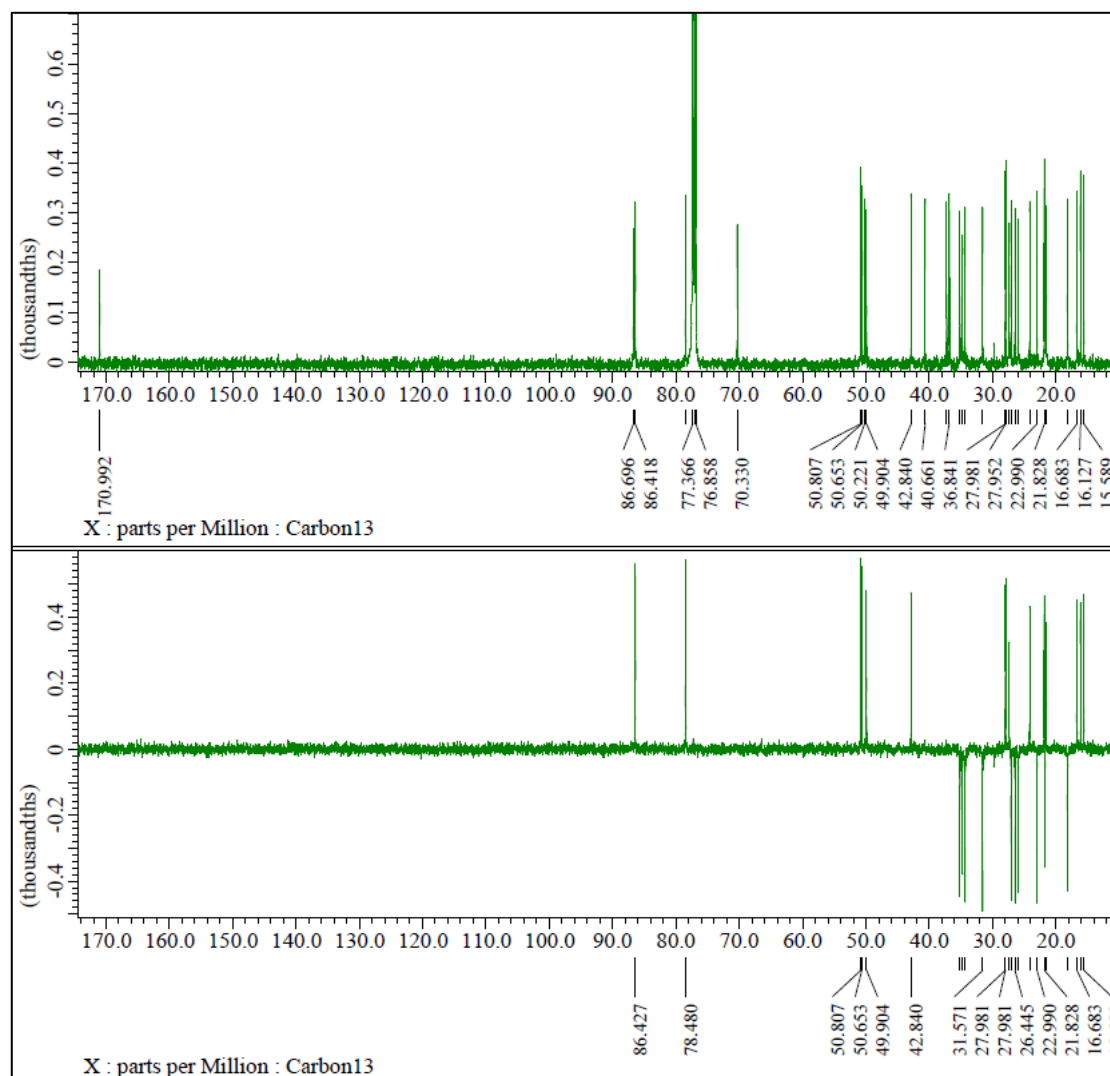
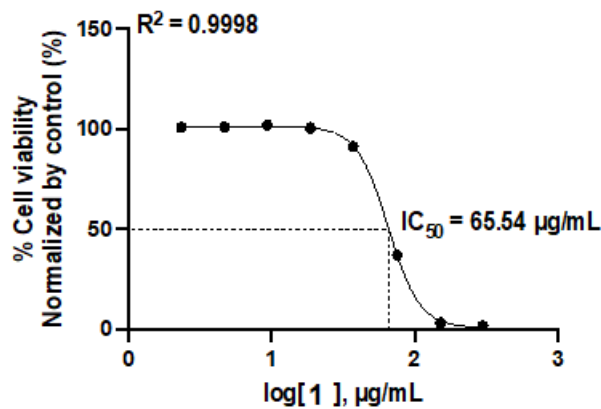
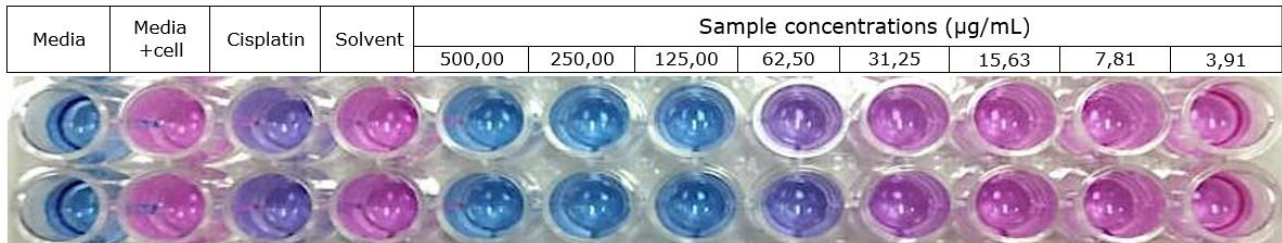
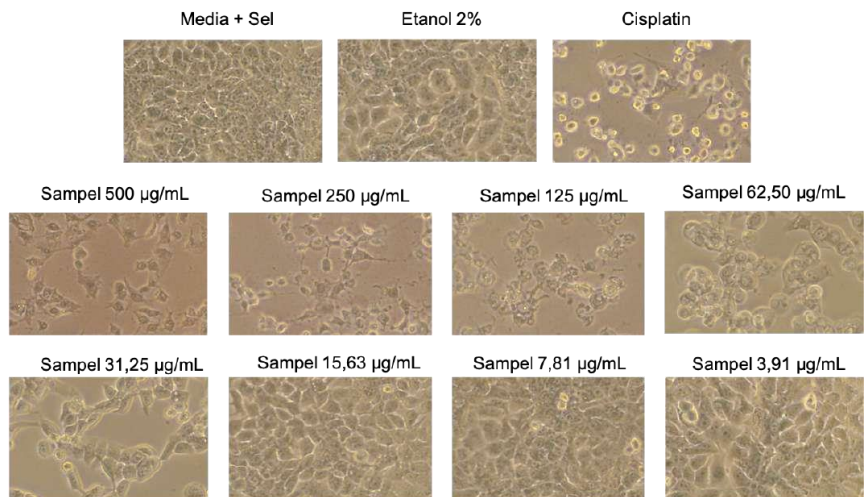


Figure S38. Results of cytotoxic activity of **1** against MCF-7 cell line.

	Media	Media+Cell	Cisplatin	DMSO 2,00%	Sample concentrations (µg/mL)							
					300.00	150.00	75.00	37.50	18.75	9.38	4.69	2.34
Absorbance 570nm	0.4499	0.7129	0.5763	0.6898	0.4461	0.4495	0.5270	0.6792	0.7836	0.7261	0.7223	0.7040
	0.4585	0.6953	0.5720	0.7189	0.4649	0.3713	0.4720	0.6561	0.6677	0.7268	0.6984	0.7247
Absorbance 600nm	0.5814	0.2328	0.4878	0.2131	0.5641	0.5759	0.4240	0.2393	0.2636	0.2287	0.2204	0.2159
	0.5950	0.2173	0.4902	0.2220	0.5952	0.4749	0.3840	0.2311	0.2073	0.2255	0.2135	0.2290
Absorbance difference	-0.1315	0.4801	0.0885	0.4767	-0.1180	-0.1264	0.1030	0.4399	0.5200	0.4974	0.5019	0.4881
	-0.1365	0.4780	0.0818	0.4969	-0.1303	-0.1036	0.0880	0.4250	0.4604	0.5013	0.4849	0.4957
% live cell		98.92	35.84	98.37	2.58	1.22	38.18	92.45	105.35	101.71	102.43	100.21
		98.58	34.76	101.63	0.60	4.90	35.76	90.05	95.75	102.34	99.69	101.43
Average % live cell		98.75	35.30	100.00	1.59	3.06	36.97	91.25	100.55	102.02	101.06	100.82
SEM		0.17	0.54	1.63	0.99	1.84	1.21	1.20	4.80	0.31	1.37	0.61
Normalize data		98.75	35.30	100.00	1.59	3.06	36.97	91.25	100.55	102.02	101.06	100.82



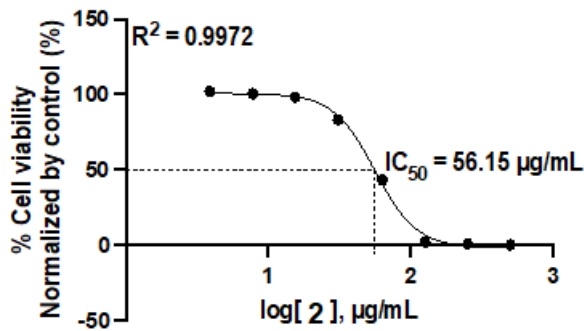
Media	Media +cell	Cisplatin	Solvent	Sample concentrations (µg/mL)							
				500,00	250,00	125,00	62,50	31,25	15,63	7,81	3,91
											




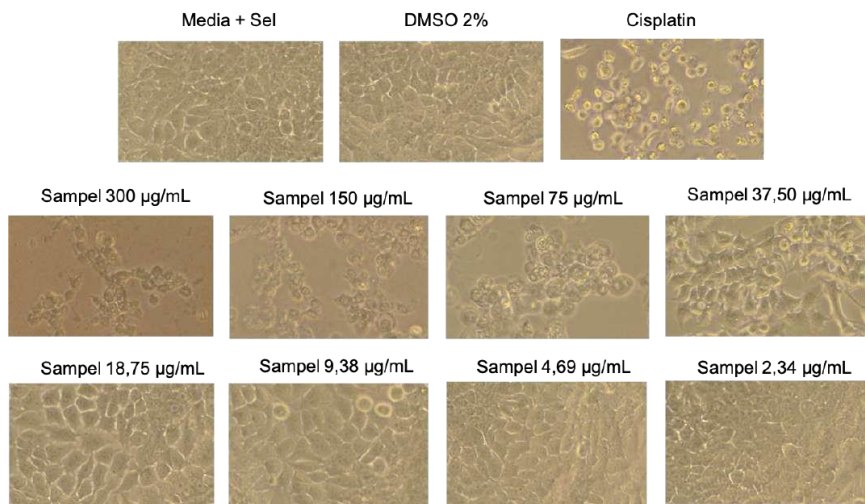
MCF-7 cell morphology at each concentration of compound **1**

Figure S39. Results of cytotoxic activity of **2** against MCF-7 cell line.

	Media	Media+Cell	Cisplatin	DMSO 2,00%	Sample concentrations (µg/mL)							
					500.00	250.00	125.00	62.50	31.25	15.63	7.81	3.91
Absorbance	0.4213	0.7029	0.5601	0.7319	0.4407	0.4270	0.4357	0.5889	0.6605	0.6873	0.6929	0.6916
570nm	0.4246	0.6978	0.5420	0.7072	0.4430	0.4295	0.4410	0.5324	0.6616	0.6898	0.6905	0.6930
Absorbance	0.5432	0.2123	0.4377	0.2369	0.5633	0.5444	0.5402	0.4000	0.2738	0.2240	0.2215	0.2114
600nm	0.5484	0.2123	0.4406	0.2653	0.5660	0.5473	0.5594	0.4546	0.3094	0.2385	0.2199	0.2113
Absorbance	-0.1219	0.4906	0.1224	0.4950	-0.1226	-0.1174	-0.1045	0.1889	0.3867	0.4633	0.4714	0.4802
difference	-0.1238	0.4855	0.1014	0.4419	-0.1230	-0.1178	-0.1184	0.0778	0.3522	0.4513	0.4706	0.4817
% live cell		103.75	41.48	104.49	0.04	0.92	3.10	52.72	86.17	99.13	100.50	101.99
		102.88	37.92	95.51	-0.03	0.85	0.75	33.93	80.34	97.10	100.36	102.24
Average % live cell		103.31	39.70	100.00	0.01	0.89	1.93	43.33	83.26	98.11	100.43	102.11
SEM		0.43	1.78	4.49	0.03	0.03	1.18	9.39	2.92	1.01	0.07	0.13
Normalize data		103.31	39.70	100.00	0.01	0.89	1.93	43.33	83.26	98.11	100.43	102.11



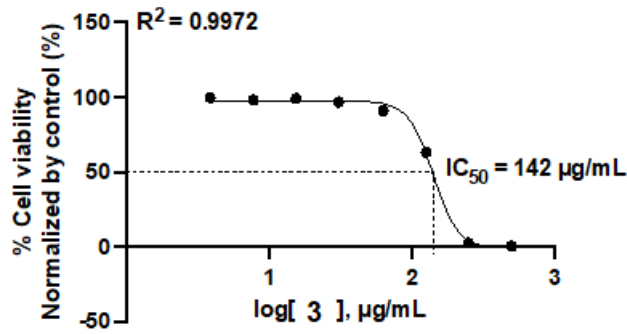
Media	Media +Cell	Cisplatin	Solvent	Sample concentrations (µg/mL)							
				300	150,00	75,00	37,50	18,75	9,38	4,69	2,34
											




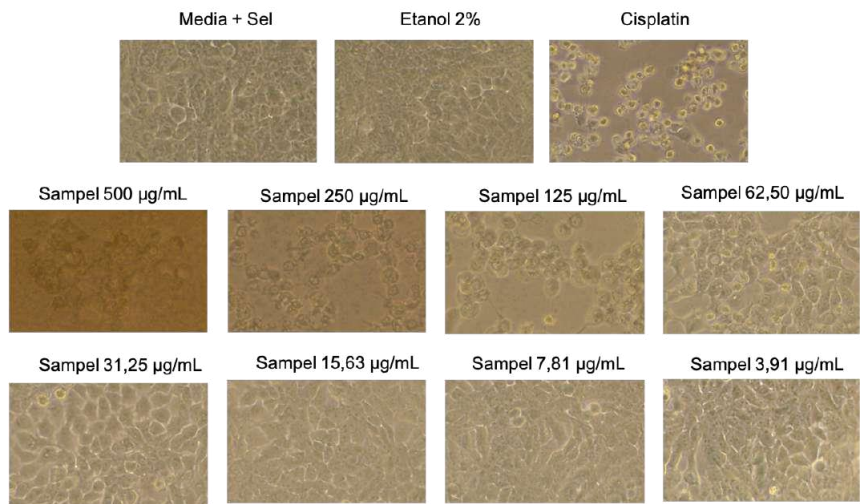
MCF-7 cell morphology at each concentration of compound **2**

Figure S40. Results of cytotoxic activity of **3** against MCF-7 cell line.

	Media	Media+Cell	Cisplatin	DMSO 2,00%	Sample concentrations (µg/mL)							
					500.00	250.00	125.00	62.50	31.25	15.63	7.81	3.91
Absorbance	0.4184	0.7361	0.5164	0.7271	0.5020	0.4571	0.6659	0.7166	0.7301	0.7249	0.6999	0.7463
570nm	0.4279	0.7269	0.5190	0.7316	0.4924	0.4761	0.6329	0.7409	0.7095	0.7233	0.7160	0.7042
Absorbance	0.5337	0.1803	0.4928	0.1876	0.6193	0.5687	0.3574	0.2605	0.2086	0.1863	0.1748	0.1904
600nm	0.5457	0.1778	0.4769	0.1834	0.6024	0.5620	0.3396	0.2262	0.1871	0.1830	0.1785	0.1746
Absorbance	-0.1153	0.5558	0.0236	0.5395	-0.1173	-0.1116	0.3085	0.4561	0.5215	0.5386	0.5251	0.5559
difference	-0.1178	0.5491	0.0421	0.5482	-0.1100	-0.0859	0.2933	0.5147	0.5224	0.5403	0.5375	0.5296
% live cell		101.81	21.22	99.34	-0.11	0.75	64.36	86.71	96.62	99.21	97.16	101.82
		100.79	24.02	100.66	0.99	4.64	62.06	95.59	96.75	99.46	99.04	97.84
Average % live cell		101.30	22.62	100.00	0.44	2.70	63.21	91.15	96.68	99.33	98.10	99.83
SEM		0.51	1.40	0.66	0.55	1.95	1.15	4.44	0.07	0.13	0.94	1.99
Normalize data		101.30	22.62	100.00	0.44	2.70	63.21	91.15	96.68	99.33	98.10	99.83



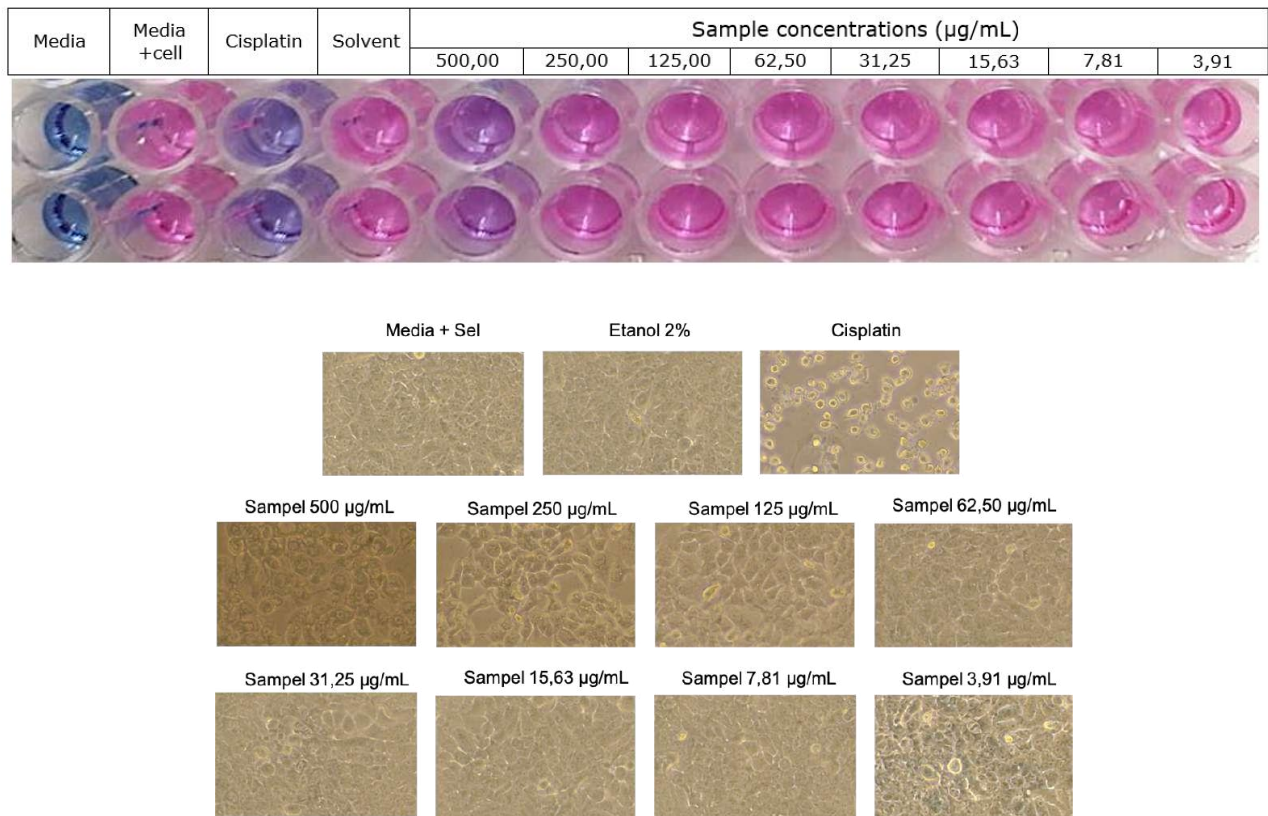
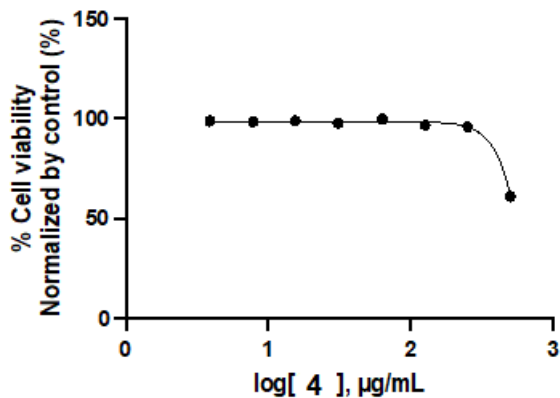
Media	Media +cell	Cisplatin	Solvent	Sample concentrations (µg/mL)							
				500,00	250,00	125,00	62,50	31,25	15,63	7,81	3,91
											



MCF-7 cell morphology at each concentration of compound **3**

Figure S41. Results of cytotoxic activity of **4** against MCF-7 cell line.

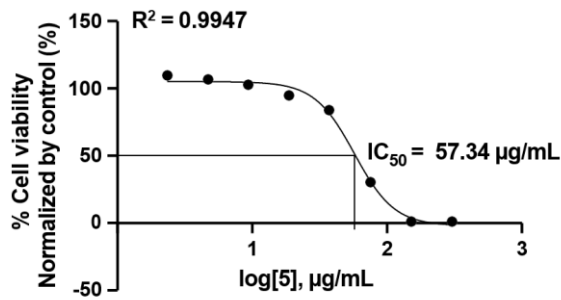
	Media	Media+Cell	Cisplatin	DMSO 2,00%	Sample concentrations (µg/mL)							
					500.00	250.00	125.00	62.50	31.25	15.63	7.81	3.91
Absorbance 570nm	0.4267	0.7354	0.546	0.7267	0.6523	0.7451	0.7266	0.7583	0.7172	0.7282	0.7315	0.7167
	0.4305	0.735	0.5434	0.7386	0.6757	0.7484	0.7262	0.7227	0.7275	0.7218	0.7063	0.728
Absorbance 600nm	0.5443	0.1818	0.4777	0.1825	0.381	0.2304	0.2009	0.1998	0.1857	0.1819	0.1819	0.1786
	0.5485	0.1815	0.4632	0.1828	0.3633	0.2174	0.1945	0.1841	0.1883	0.1798	0.1774	0.1821
Absorbance difference	-0.1176	0.5536	0.0683	0.5442	0.2713	0.5147	0.5257	0.5585	0.5315	0.5463	0.5496	0.5381
	-0.1180	0.5535	0.0802	0.5558	0.3124	0.5310	0.5317	0.5386	0.5392	0.5420	0.5289	0.5459
% live cell		100.54	27.87	99.13	58.27	94.71	96.36	101.27	97.23	99.45	99.94	98.22
		100.52	29.65	100.87	64.42	97.15	97.26	98.29	98.38	98.80	96.84	99.39
Average % live cell		100.53	28.76	100.00	61.34	95.93	96.81	99.78	97.81	99.12	98.39	98.80
SEM		0.01	0.89	0.87	3.08	1.22	0.45	1.49	0.58	0.32	1.55	0.58
Normalize data		100.53	28.76	100.00	61.34	95.93	96.81	99.78	97.81	99.12	98.39	98.80




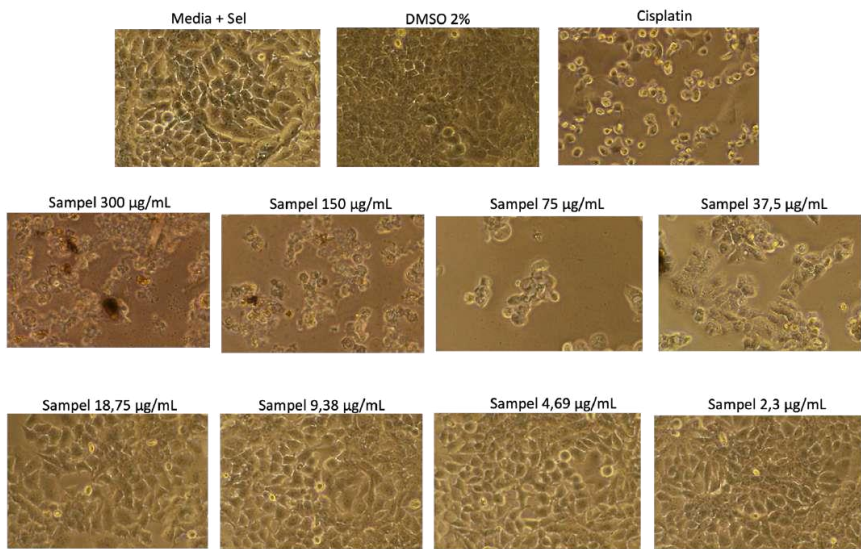
MCF-7 cell morphology at each concentration of compound **4**

Figure S42. Results of cytotoxic activity of **5** against MCF-7 cell line.

	Media	Media + cell	Cisplatin	Solvent	Sample concentrations (µg/mL)							
					2,34	4,69	9,38	18,75	37,50	75,00	150,00	300,00
Absorbance 570nm	0,4706	0,7728	0,5746	0,7568	0,7833	0,7678	0,7578	0,7323	0,7316	0,5663	0,4709	0,4640
	0,4842	0,7666	0,5718	0,7562	0,7754	0,7728	0,7657	0,7419	0,7088	0,5703	0,4761	0,5014
Absorbance 600nm	0,6023	0,2352	0,5244	0,2838	0,2467	0,2531	0,2642	0,2845	0,3246	0,5133	0,5965	0,5893
	0,6201	0,2342	0,5277	0,2782	0,2450	0,2531	0,2723	0,3026	0,3629	0,5189	0,6023	0,6325
Absorbance difference	-0,1317	0,5376	0,0502	0,4730	0,5366	0,5147	0,4936	0,4478	0,4070	0,0530	-0,1256	-0,1253
	-0,1359	0,5324	0,0441	0,4780	0,5304	0,5197	0,4934	0,4393	0,3459	0,0514	-0,1262	-0,1311
% live cell		110,19	30,20	99,59	110,03	106,43	102,97	95,45	88,76	30,66	1,35	1,40
		109,34	29,20	100,41	109,01	107,25	102,94	94,06	78,73	30,40	1,25	0,44
Average % live cell		109,77	29,70	100,00	109,52	106,84	102,95	94,76	83,74	30,53	1,30	0,92
SEM		0,43	0,50	0,41	0,51	0,41	0,02	0,70	5,01	0,13	0,05	0,48
Normalized data % live cell		109,77	29,70	100,00	109,52	106,84	102,95	94,76	83,74	30,53	1,30	0,92



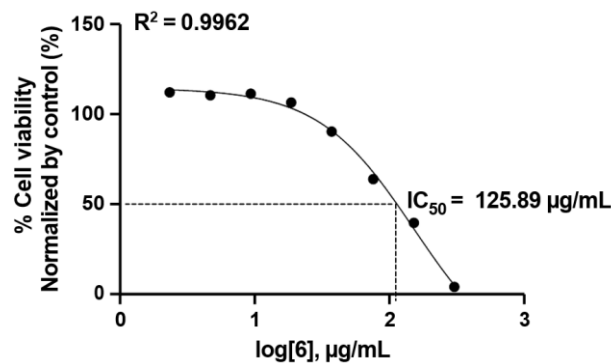
Media	Media +cell	Cisplatin	Solvent	Sample concentrations (µg/mL)							
				2,34	4,69	9,38	18,75	37,50	75,00	150,00	300,00
											




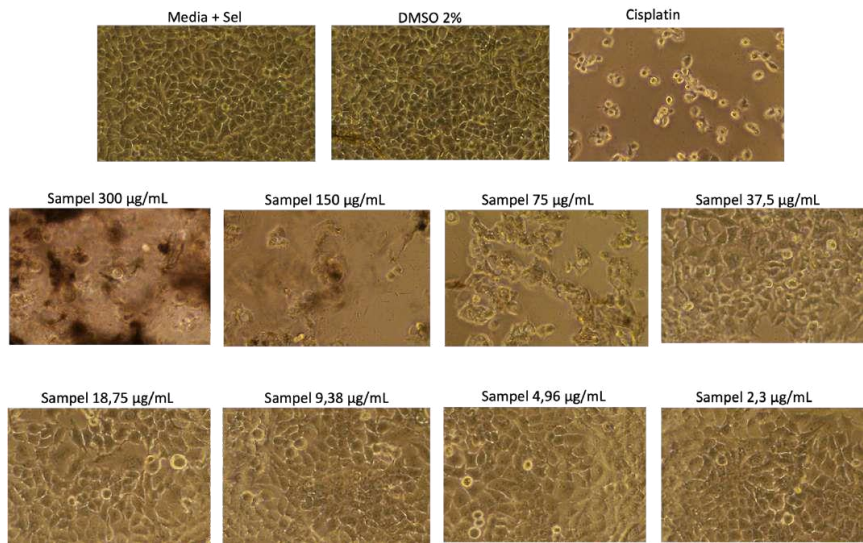
MCF-7 cell morphology at each concentration of compound **5**

Figure S43. Results of cytotoxic activity of **6** against MCF-7 cell line.

	Media	Media + cell	Cisplatin	Solvent	Sample concentrations (µg/mL)							
					2,34	4,69	9,38	18,75	37,50	75,00	150,00	300,00
Absorbance 570nm	0,4756	0,7769	0,5661	0,7535	0,7673	0,7584	0,7799	0,7670	0,7051	0,6611	0,6010	0,5074
	0,4961	0,7783	0,5699	0,7509	0,7678	0,7539	0,7754	0,7505	0,5997	0,6806	0,6265	0,4938
Absorbance 600nm	0,6079	0,2388	0,5239	0,2793	0,2381	0,2313	0,2517	0,2676	0,2935	0,4269	0,5192	0,6099
	0,6319	0,2364	0,5260	0,3143	0,2452	0,2485	0,2603	0,2644	0,2166	0,4299	0,5100	0,6108
Absorbance difference	-0,1323	0,5381	0,0422	0,4742	0,5292	0,5271	0,5282	0,4994	0,4116	0,2342	0,0818	-0,1025
	-0,1358	0,5419	0,0439	0,4366	0,5226	0,5054	0,5151	0,4861	0,3831	0,2507	0,1165	-0,1170
% live cell		114,03	29,90	103,19	112,52	112,16	112,35	107,46	92,57	62,47	36,62	5,35
		114,67	30,19	96,81	111,40	108,48	110,13	105,21	87,73	65,27	42,51	2,89
Average % live cell		114,35	30,04	100,00	111,96	110,32	111,24	106,34	90,15	63,87	39,56	4,12
SEM		0,32	0,14	3,19	0,56	1,84	1,11	1,13	2,42	1,40	2,94	1,23
Normalized data % live cell		114,35	30,04	100,00	111,96	110,32	111,24	106,34	90,15	63,87	39,56	4,12



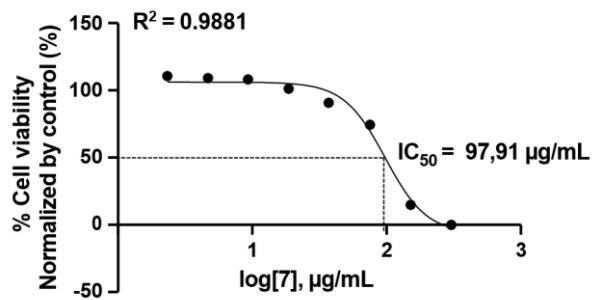
Media	Media +cell	Cisplatin	Solvent	Sample concentrations (µg/mL)						
				2,34	4,69	9,38	18,75	37,50	75,00	150,00
										




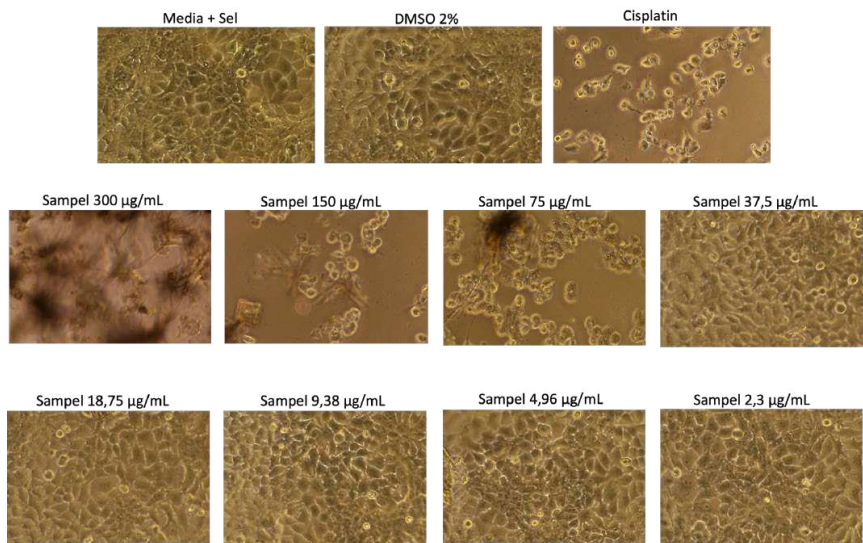
MCF-7 cell morphology at each concentration of compound **6**

Figure S44. Results of cytotoxic activity of **7** against MCF-7 cell line.

	Media	Media + cell	Cisplatin	Solvent	Sample concentrations (µg/mL)							
					2,34	4,69	9,38	18,75	37,50	75,00	150,00	300,00
Absorbance 570nm	0,4693	0,7481	0,5716	0,7565	0,7825	0,7779	0,7556	0,7436	0,7284	0,6887	0,5271	0,4850
	0,4886	0,7770	0,5703	0,7580	0,7592	0,7694	0,7567	0,7374	0,7153	0,7010	0,5306	0,4951
Absorbance 600nm	0,6010	0,2242	0,5216	0,2728	0,2356	0,2420	0,2364	0,2434	0,2978	0,3639	0,5485	0,6092
	0,6225	0,2337	0,5218	0,2929	0,2314	0,2465	0,2318	0,2723	0,3080	0,3872	0,5937	0,6355
Absorbance difference	-0,1317	0,5239	0,0500	0,4837	0,5469	0,5359	0,5192	0,5002	0,4306	0,3248	-0,0214	-0,1242
	-0,1339	0,5433	0,0485	0,4651	0,5278	0,5229	0,5249	0,4651	0,4073	0,3138	-0,0631	-0,1404
% live cell		108,15	30,11	101,53	111,94	110,13	107,38	104,25	92,79	75,36	18,35	1,42
		111,35	29,86	98,47	108,79	107,99	108,32	98,47	88,95	73,55	11,48	-1,25
Average % live cell		109,75	29,98	100,00	110,37	109,06	107,85	101,36	90,87	74,46	14,91	0,08
SEM		1,60	0,12	1,53	1,57	1,07	0,47	2,89	1,92	0,91	3,43	1,33
Normalized data % live cell		109,75	29,98	100,00	110,37	109,06	107,85	101,36	90,87	74,46	14,91	0,08



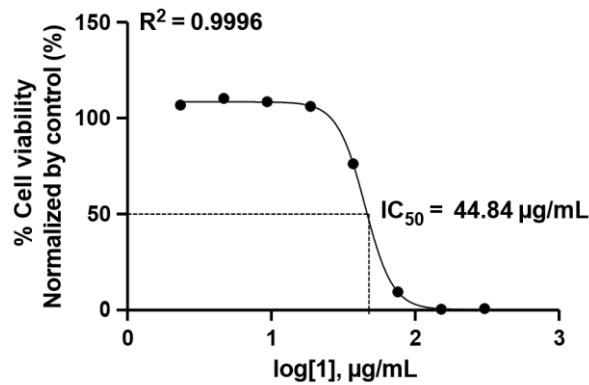
Media	Media +cell	Cisplatin	Solvent	Sample concentrations (µg/mL)							
				2,34	4,69	9,38	18,75	37,50	75,00	150,00	300,00
											




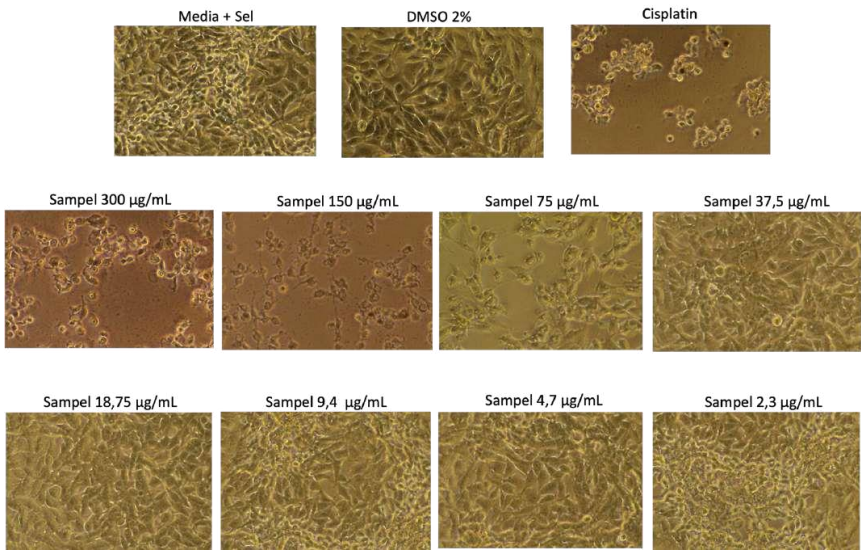
MCF-7 cell morphology at each concentration of compound **7**

Figure S45. Results of cytotoxic activity of **1** against B16-F10 cell line.

	Media	Media + cell	Cisplatin	Solvent	Sample concentrations (µg/mL)							
					2,34	4,69	9,38	18,75	37,50	75,00	150,00	300,00
Absorbance 570nm	0,4740	0,8303	0,5658	0,7732	0,8008	0,8332	0,8115	0,7873	0,7135	0,5146	0,4995	0,5000
	0,4868	0,7935	0,5606	0,7750	0,8084	0,8181	0,8023	0,7869	0,7186	0,5299	0,5090	0,4896
Absorbance 600nm	0,5998	0,2586	0,5273	0,2734	0,2661	0,2622	0,2513	0,2510	0,3629	0,5810	0,6237	0,6243
	0,6178	0,2801	0,5600	0,2767	0,2595	0,2602	0,2566	0,2472	0,3699	0,6018	0,6376	0,6129
Absorbance difference	-0,1258	0,5717	0,0385	0,4998	0,5347	0,5710	0,5602	0,5363	0,3506	-0,0664	-0,1242	-0,1243
	-0,1310	0,5134	0,0006	0,4983	0,5489	0,5579	0,5457	0,5397	0,3487	-0,0719	-0,1286	-0,1233
% live cell		111,58	26,60	100,12	105,68	111,47	109,75	105,94	76,34	9,88	0,67	0,65
		102,29	20,56	99,88	107,94	109,38	107,43	106,48	76,04	9,00	-0,03	0,81
Average % live cell		106,93	23,58	100,00	106,81	110,42	108,59	106,21	76,19	9,44	0,32	0,73
SEM		4,65	3,02	0,12	1,13	1,04	1,16	0,27	0,15	0,44	0,35	0,08
Normalized data % live cell		106,93	23,58	100,00	106,81	110,42	108,59	106,21	76,19	9,44	0,32	0,73



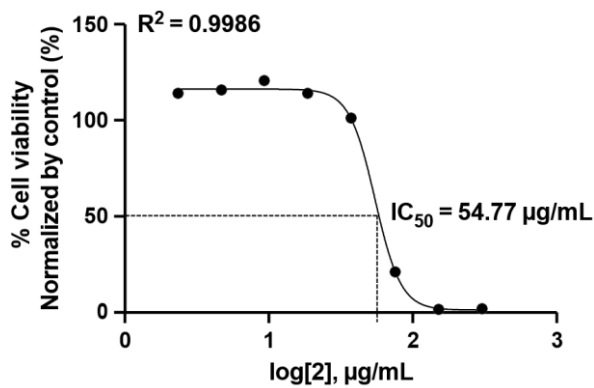
Media	Media +cell	Cisplatin	Solvent	Sample concentrations (µg/mL)							
				2,34	4,69	9,38	18,75	37,50	75,00	150,00	300,00
											




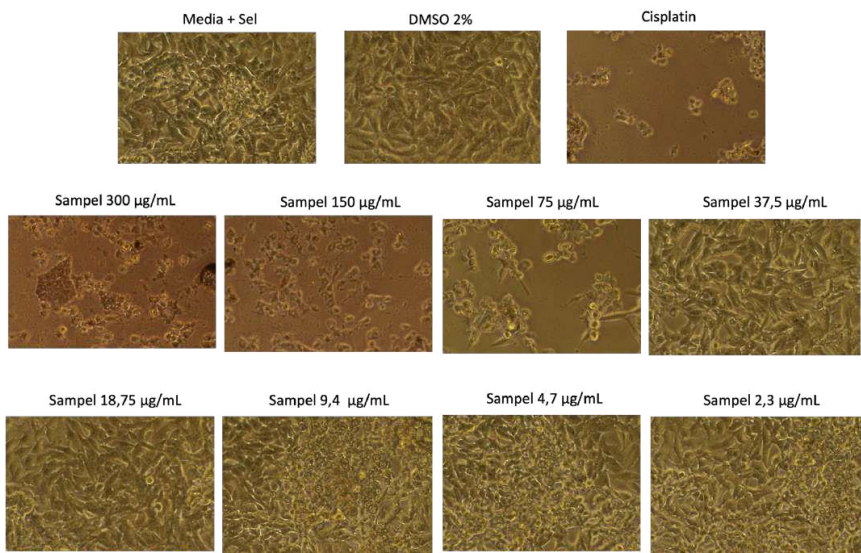
B16-F10 cell morphology at each concentration of compound **1**

Figure S46. Results of cytotoxic activity of **2** against B16-F10 cell line.

	Media	Media + cell	Cisplatin	Solvent	Sample concentrations (µg/mL)							
					2,34	4,69	9,38	18,75	37,50	75,00	150,00	300,00
Absorbance 570nm	0,3298	0,5262	0,3541	0,5074	0,5555	0,5501	0,5502	0,5308	0,5103	0,3734	0,3537	0,3510
	0,3429	0,5442	0,3610	0,5103	0,5432	0,5559	0,5944	0,5297	0,5093	0,4019	0,3661	0,3515
Absorbance 600nm	0,3880	0,2086	0,4036	0,2196	0,2112	0,2087	0,2053	0,1906	0,2217	0,3771	0,4089	0,4047
	0,4026	0,2030	0,4009	0,2184	0,2110	0,2072	0,2150	0,1918	0,2098	0,3695	0,4185	0,4017
Absorbance difference	-0,0582	0,3176	-0,0495	0,2878	0,3443	0,3414	0,3449	0,3402	0,2886	-0,0037	-0,0552	-0,0537
	-0,0597	0,3412	-0,0399	0,2919	0,3322	0,3487	0,3794	0,3379	0,2995	0,0324	-0,0524	-0,0502
% live cell		107,96	2,71	99,41	115,61	114,78	115,78	114,44	99,64	15,84	1,08	1,51
		114,72	5,46	100,59	112,14	116,87	125,67	113,78	102,77	26,19	1,88	2,51
Average % live cell		111,34	4,09	100,00	113,88	115,83	120,73	114,11	101,20	21,01	1,48	2,01
SEM		3,38	1,38	0,59	1,73	1,05	4,95	0,33	1,56	5,17	0,40	0,50
Normalized data % live cell		111,34	4,09	100,00	113,88	115,83	120,73	114,11	101,20	21,01	1,48	2,01



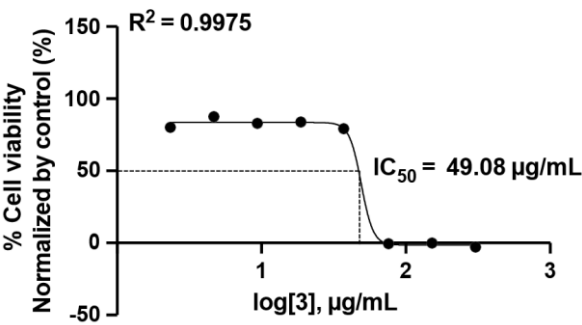
Media	Media +cell	Cisplatin	Solvent	Sample concentrations (µg/mL)							
				2,34	4,69	9,38	18,75	37,50	75,00	150,00	300,00
											




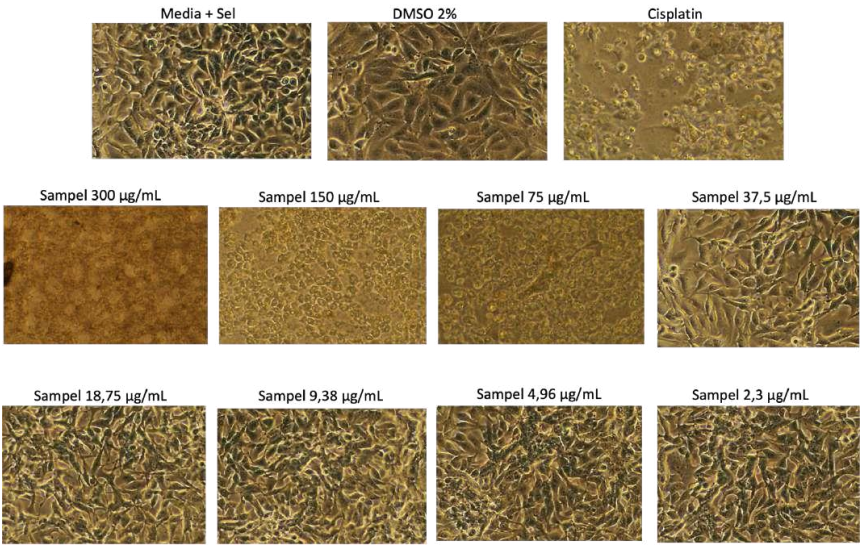
B16-F10 cell morphology at each concentration of compound **2**

Figure S47. Results of cytotoxic activity of **3** against B16-F10 cell line.

	Media	Media + cell	Cisplatin	Solvent	Sample concentrations (µg/mL)							
					2,34	4,69	9,38	18,75	37,50	75,00	150,00	300,00
Absorbance 570nm	0,4350	0,7556	0,6233	0,7508	0,7565	0,7121	0,7175	0,7637	0,7275	0,4970	0,5186	0,5010
	0,4505	0,7470	0,5993	0,7526	0,7005	0,7952	0,7523	0,7182	0,7569	0,4965	0,5574	0,4966
Absorbance 600nm	0,5490	0,2919	0,4025	0,2771	0,3405	0,3734	0,3831	0,3505	0,4008	0,6142	0,6433	0,6308
	0,5662	0,2662	0,4239	0,2642	0,3929	0,3201	0,3289	0,3634	0,3690	0,6165	0,6626	0,6316
Absorbance difference	-0,1140	0,4637	0,2208	0,4737	0,4160	0,3387	0,3344	0,4132	0,3267	-0,1172	-0,1247	-0,1298
	-0,1157	0,4808	0,1754	0,4884	0,3076	0,4751	0,4234	0,3548	0,3879	-0,1200	-0,1052	-0,1350
% live cell		98,54	57,17	100,25	90,42	77,25	76,52	89,94	75,21	-0,40	-1,68	-2,55
		101,46	49,44	102,75	71,96	100,49	91,68	79,99	85,63	-0,88	1,64	-3,43
Average % live cell		100,00	53,30	101,50	81,19	88,87	84,10	84,97	80,42	-0,64	-0,02	-2,99
SEM		1,46	3,87	1,25	9,23	11,62	7,58	4,97	5,21	0,24	1,66	0,44
Normalized data % live cell		98,52	52,52	100,00	79,99	87,56	82,86	83,71	79,23	-0,63	-0,02	-2,95



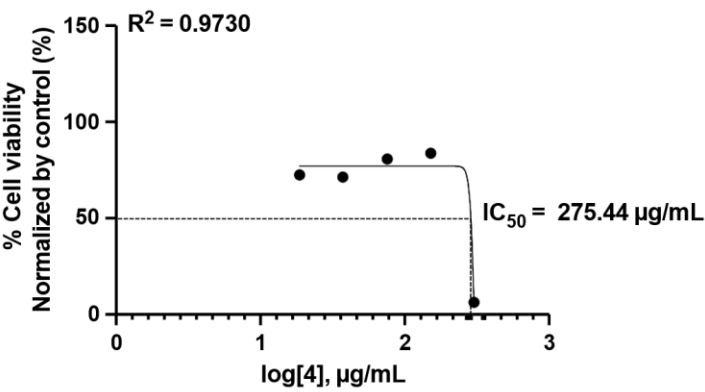
Media	Media +cell	Cisplatin	Solvent	Sample concentrations (µg/mL)							
				2,34	4,69	9,38	18,75	37,50	75,00	150,00	300,00
											




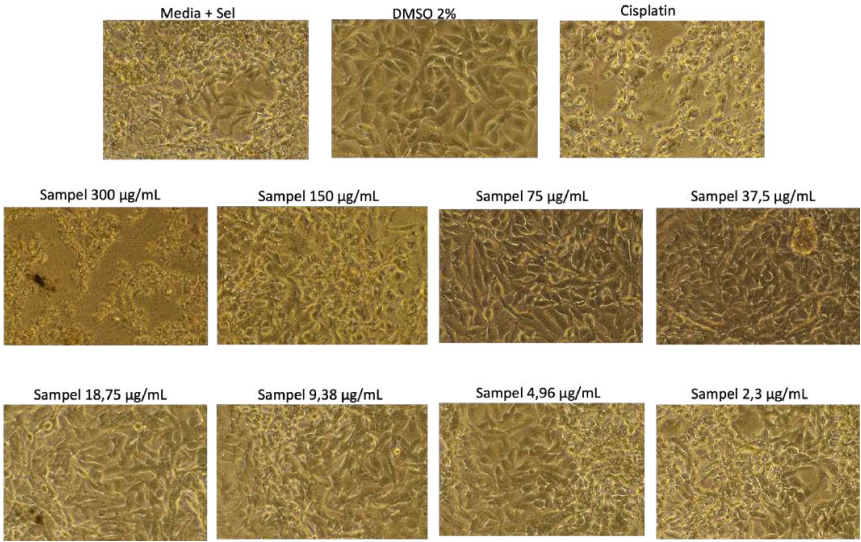
B16-F10 cell morphology at each concentration of compound **3**

Figure S48. Results of cytotoxic activity of **4** against B16-F10 cell line.

	Media	Media + cell	Cisplatin	Solvent	Sample concentrations (µg/mL)							
					2,34	4,69	9,38	18,75	37,50	75,00	150,00	300,00
Absorbance 570nm	0,4350	0,7556	0,6233	0,7508	0,7646	0,6342	0,6616	0,7139	0,7212	0,7322	0,7312	0,5145
	0,4505	0,7470	0,5993	0,7526	0,6985	0,6452	0,6456	0,7058	0,691	0,7509	0,7442	0,5188
Absorbance 600nm	0,5490	0,2919	0,4025	0,2771	0,3509	0,4202	0,419	0,3901	0,3664	0,362	0,3704	0,6063
	0,5662	0,2662	0,4239	0,2642	0,4006	0,4604	0,4365	0,3942	0,4241	0,3878	0,3356	0,5804
Absorbance difference	-0,1140	0,4637	0,2208	0,4737	0,4137	0,2140	0,2426	0,3238	0,3548	0,3702	0,3608	-0,0918
	-0,1157	0,4808	0,1754	0,4884	0,2979	0,1848	0,2091	0,3116	0,2669	0,3631	0,4086	-0,0616
% live cell		98,54	57,17	100,25	90,03	56,01	60,88	74,71	79,99	82,62	81,02	3,93
		101,46	49,44	102,75	70,30	51,04	55,18	72,64	65,02	81,41	89,16	9,07
Average % live cell		100,00	53,30	101,50	80,17	53,53	58,03	73,68	72,51	82,01	85,09	6,50
SEM		1,46	3,87	1,25	9,86	2,49	2,85	1,04	7,49	0,60	4,07	2,57
Normalized data % live cell		98,52	52,52	100,00	78,98	52,74	57,17	72,59	71,44	80,80	83,83	6,40



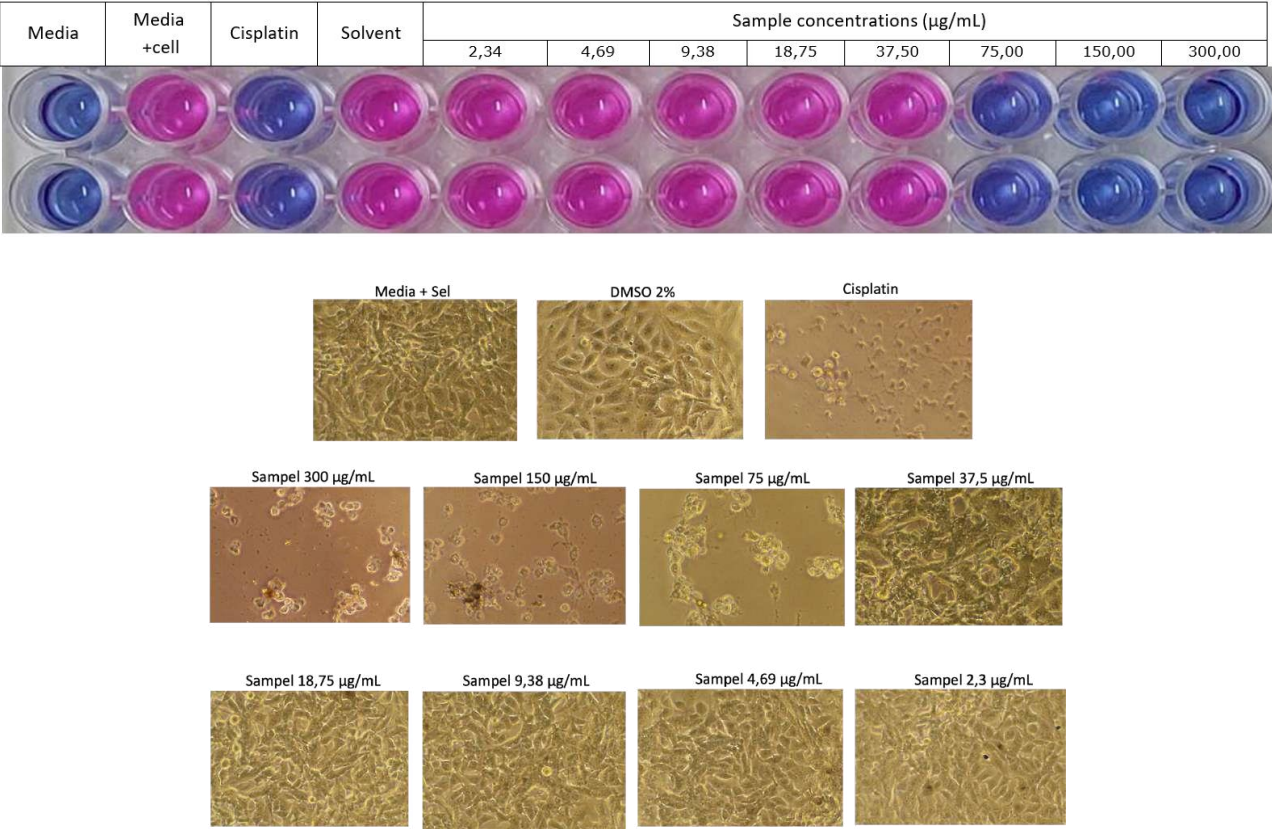
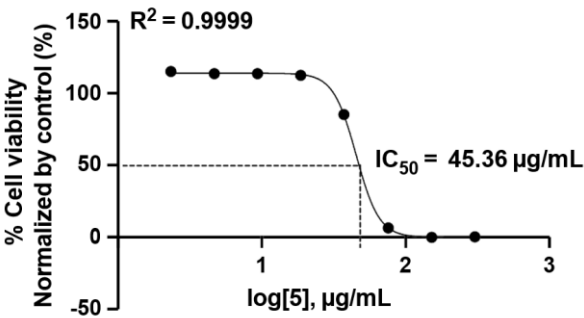
Media	Media +cell	Cisplatin	Solvent	Sample concentrations (µg/mL)							
				2,34	4,69	9,38	18,75	37,50	75,00	150,00	300,00
											



B16-F10 cell morphology at each concentration of compound **4**

Figure S49. Results of cytotoxic activity of **5** against B16-F10 cell line.

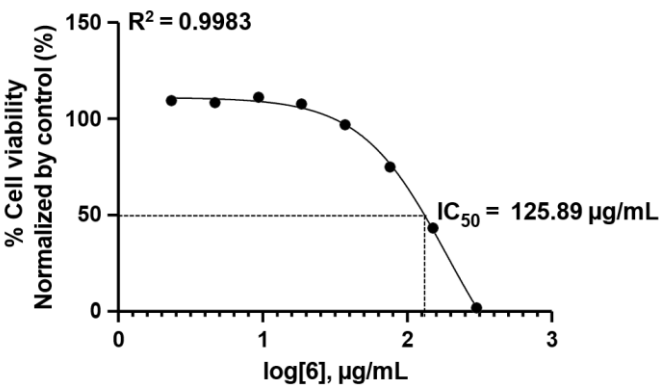
	Media	Media + cell	Cisplatin	Solvent	Sample concentrations (µg/mL)							
					2,34	4,69	9,38	18,75	37,50	75,00	150,00	300,00
Absorbance 570nm	0,4525	0,7797	0,4912	0,7199	0,7613	0,7580	0,7566	0,7478	0,6946	0,5090	0,4848	0,4863
	0,4987	0,7640	0,4970	0,7186	0,7608	0,7664	0,7653	0,7614	0,6989	0,5149	0,4963	0,4848
Absorbance 600nm	0,5775	0,2607	0,5922	0,3137	0,2741	0,2910	0,2879	0,2816	0,3693	0,6003	0,6215	0,6162
	0,6378	0,2726	0,5976	0,3261	0,2911	0,2927	0,2925	0,2987	0,3842	0,6199	0,6250	0,6166
Absorbance difference	-0,1250	0,5190	-0,1010	0,4062	0,4872	0,4670	0,4687	0,4662	0,3253	-0,0913	-0,1367	-0,1299
	-0,1391	0,4914	-0,1006	0,3925	0,4697	0,4737	0,4728	0,4627	0,3147	-0,1050	-0,1287	-0,1318
% live cell		122,52	5,84	101,29	116,53	112,73	113,05	112,58	86,07	7,67	-0,88	0,40
		117,32	5,92	98,71	113,24	113,99	113,82	111,92	84,07	5,09	0,63	0,05
Average % live cell		119,92	5,88	100,00	114,89	113,36	113,44	112,25	85,07	6,38	-0,12	0,23
SEM		2,60	0,04	1,29	1,65	0,63	0,39	0,33	1,00	1,29	0,75	0,18
Normalized data % live cell		119,92	5,88	100,00	114,89	113,36	113,44	112,25	85,07	6,38	-0,12	0,23




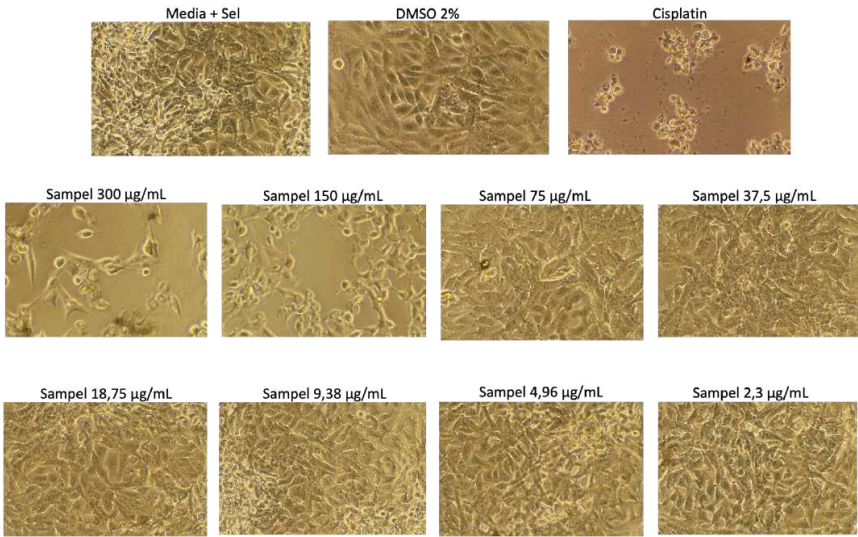
B16-F10 cell morphology at each concentration of compound **5**

Figure S50. Results of cytotoxic activity of **6** against B16-F10 cell line.

	Media	Media + cell	Cisplatin	Solvent	Sample concentrations (µg/mL)							
					2,34	4,69	9,38	18,75	37,50	75,00	150,00	300,00
Absorbance 570nm	0,4927	0,7869	0,4960	0,7199	0,7273	0,7219	0,7350	0,7306	0,6836	0,6445	0,5961	0,5731
	0,4921	0,7905	0,5134	0,7378	0,7850	0,7901	0,7923	0,7715	0,7871	0,7280	0,6339	0,4870
Absorbance 600nm	0,6282	0,2574	0,5898	0,3211	0,3149	0,3237	0,3074	0,3286	0,3757	0,4500	0,5443	0,6970
	0,6261	0,2592	0,6123	0,3165	0,2735	0,2776	0,2765	0,2697	0,3101	0,3754	0,4843	0,6138
Absorbance difference	-0,1355	0,5295	-0,0938	0,3988	0,4124	0,3982	0,4276	0,4020	0,3079	0,1945	0,0518	-0,1239
	-0,1340	0,5313	-0,0989	0,4213	0,5115	0,5125	0,5158	0,5018	0,4770	0,3526	0,1496	-0,1268
% live cell		121,93	7,52	97,94	100,43	97,82	103,22	98,52	81,25	60,44	34,24	1,99
		122,26	6,58	102,06	118,62	118,81	119,41	116,84	112,29	89,45	52,19	1,46
Average % live cell		122,09	7,05	100,00	109,53	108,31	111,32	107,68	96,77	74,94	43,22	1,73
SEM		0,17	0,47	2,06	9,10	10,49	8,09	9,16	15,52	14,51	8,98	0,27
Normalized data % live cell		122,09	7,05	100,00	109,53	108,31	111,32	107,68	96,77	74,94	43,22	1,73



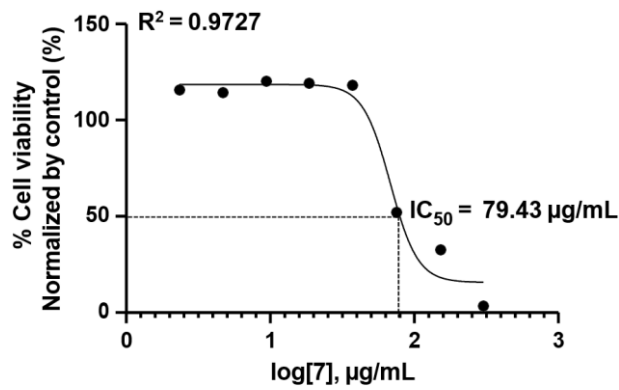
Media	Media +cell	Cisplatin	Solvent	Sample concentrations (µg/mL)							
				2,34	4,69	9,38	18,75	37,50	75,00	150,00	300,00
											




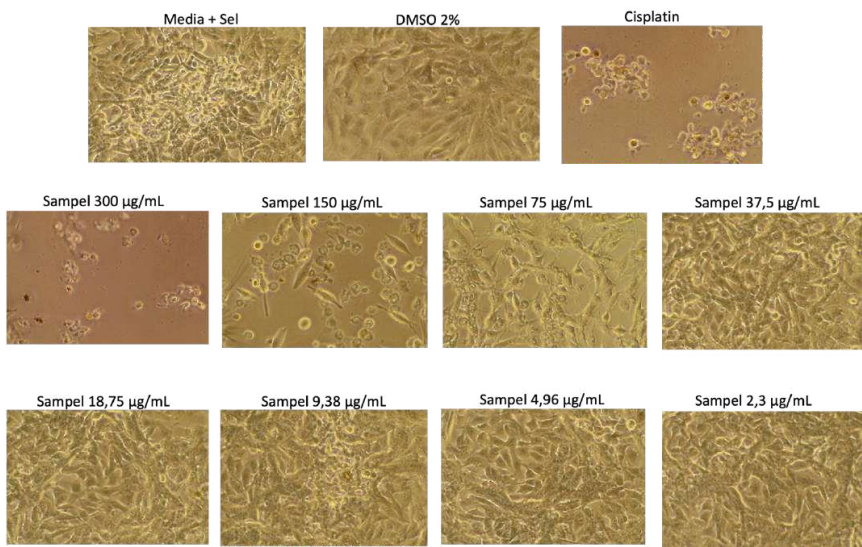
B16-F10 cell morphology at each concentration of compound **6**

Figure S51. Results of cytotoxic activity of **7** against B16-F10 cell line.

	Media	Media + cell	Cisplatin	Solvent	Sample concentrations (µg/mL)							
					2,34	4,69	9,38	18,75	37,50	75,00	150,00	300,00
Absorbance 570nm	0,4836	0,7798	0,4930	0,7107	0,7595	0,7377	0,7650	0,7577	0,7595	0,6684	0,5573	0,5005
	0,4968	0,7865	0,5016	0,7147	0,7555	0,7494	0,7822	0,7613	0,7579	0,5643	0,5584	0,5098
Absorbance 600nm	0,6183	0,2650	0,5895	0,3311	0,2952	0,2814	0,2873	0,2813	0,2763	0,4048	0,5319	0,6177
	0,6344	0,2664	0,6046	0,3280	0,2906	0,2926	0,2830	0,2713	0,2857	0,5586	0,5180	0,6308
Absorbance difference	-0,1347	0,5148	-0,0965	0,3796	0,4643	0,4563	0,4777	0,4764	0,4832	0,2636	0,0254	-0,1172
	-0,1376	0,5201	-0,1030	0,3867	0,4649	0,4568	0,4992	0,4900	0,4722	0,0057	0,0404	-0,1210
% live cell		125,35	7,64	99,32	115,63	114,09	118,21	117,96	119,27	76,98	31,11	3,65
		126,37	6,38	100,68	115,74	114,18	122,35	120,58	117,15	27,32	34,00	2,92
Average % live cell		125,86	7,01	100,00	115,68	114,13	120,28	119,27	118,21	52,15	32,55	3,28
SEM		0,51	0,63	0,68	0,06	0,05	2,07	1,31	1,06	24,83	1,44	0,37
Normalized data % live cell		125,86	7,01	100,00	115,68	114,13	120,28	119,27	118,21	52,15	32,55	3,28



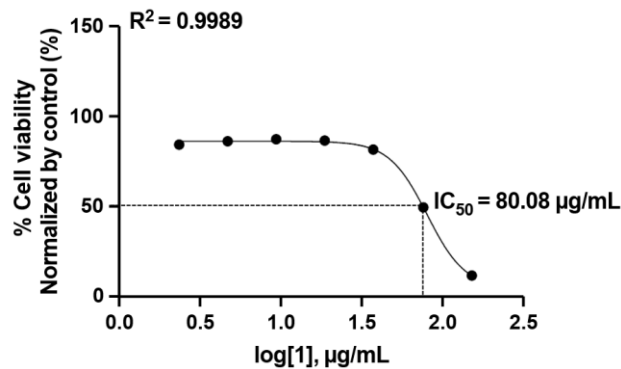
Media	Media +cell	Cisplatin	Solvent	Sample concentrations (µg/mL)							
				2,34	4,69	9,38	18,75	37,50	75,00	150,00	300,00
											



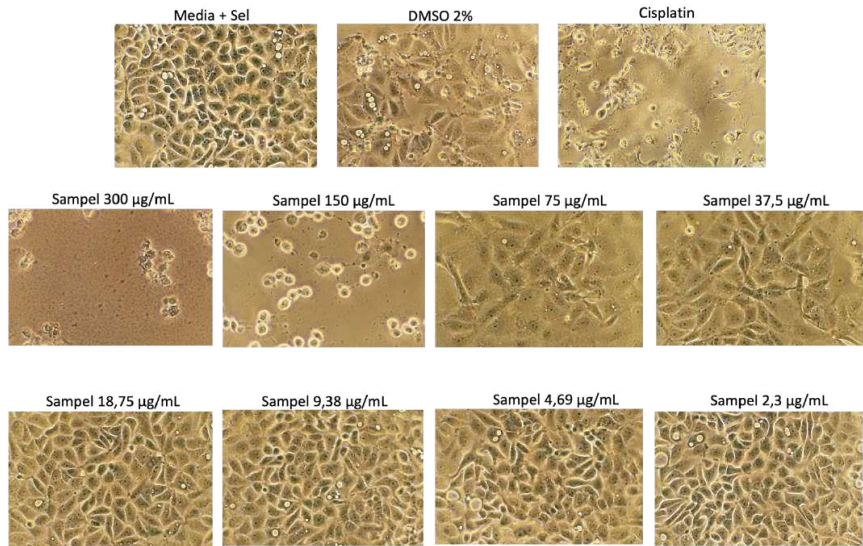
B16-F10 cell morphology at each concentration of compound **7**

Figure S52. Results of cytotoxic activity of **1** against CV-1 cell line.

	Media	Media + cell	Cisplatin	Solvent	Sample concentrations (µg/mL)							
					2,34	4,69	9,38	18,75	37,50	75,00	150,00	300,00
Absorbance 570nm	0,5356	0,7346	0,6104	0,7829	0,7258	0,7339	0,7347	0,7302	0,7241	0,6270	0,5508	0,4946
	0,5339	0,7388	0,6105	0,7838	0,7183	0,7412	0,7442	0,7478	0,7443	0,6362	0,5726	0,5070
Absorbance 600nm	0,5267	0,2567	0,4439	0,2193	0,2540	0,2521	0,2490	0,2560	0,2727	0,3454	0,4778	0,4896
	0,5317	0,2659	0,4321	0,2397	0,2553	0,2682	0,2621	0,2627	0,2914	0,3642	0,5062	0,5053
Absorbance difference	0,0089	0,4779	0,1665	0,5636	0,4718	0,4818	0,4857	0,4742	0,4514	0,2816	0,0730	0,0050
	0,0022	0,4729	0,1784	0,5441	0,4630	0,4730	0,4821	0,4851	0,4529	0,2720	0,0664	0,0017
% live cell		100,53	34,26	118,77	99,23	101,36	102,19	99,74	94,89	58,75	14,36	-0,12
		99,47	36,79	114,62	97,36	99,49	101,43	102,06	95,21	56,71	12,95	-0,82
Average % live cell		100,00	35,52	116,70	98,30	100,43	101,81	100,90	95,05	57,73	13,65	-0,47
SEM		0,53	1,27	2,08	0,94	0,94	0,38	1,16	0,16	1,02	0,70	0,35
Normalized data % live cell		85,69	30,44	100,00	84,23	86,06	87,24	86,47	81,45	49,47	11,70	-0,40



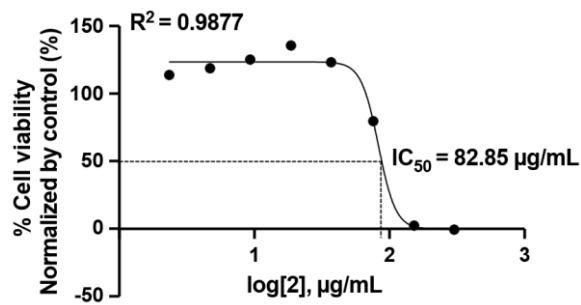
Media	Media +cell	Cisplatin	Solvent	Sample concentrations (µg/mL)							
				2,34	4,69	9,38	18,75	37,50	75,00	150,00	300,00




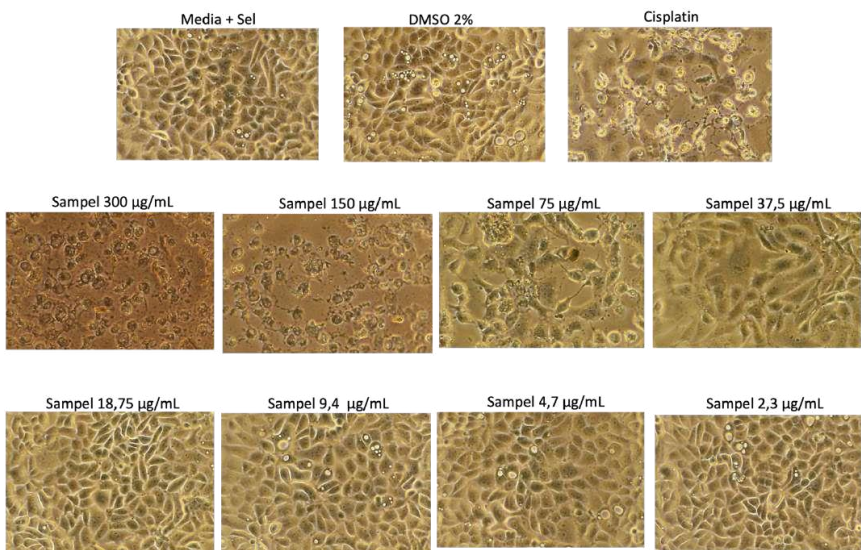
CV-1 cell morphology at each concentration of compound **1**

Figure S53. Results of cytotoxic activity of **2** against CV-1 cell line.

	Media	Media + cell	Cisplatin	Solvent	Sample concentrations (µg/mL)							
					2,34	4,69	9,38	18,75	37,50	75,00	150,00	300,00
Absorbance 570nm	0,4518	0,6048	0,5419	0,6064	0,6056	0,6122	0,6213	0,6346	0,6249	0,5790	0,5091	0,4896
	0,4546	0,6030	0,5455	0,5857	0,6074	0,6298	0,6354	0,6355	0,6201	0,5713	0,5182	0,4913
Absorbance 600nm	0,5738	0,4401	0,5407	0,4647	0,4472	0,4425	0,4408	0,4207	0,4383	0,4932	0,6266	0,6122
	0,5792	0,4398	0,5475	0,4841	0,4556	0,4636	0,4503	0,4315	0,4484	0,5141	0,6375	0,6175
Absorbance difference	-0,1220	0,1647	0,0012	0,1417	0,1584	0,1697	0,1805	0,2139	0,1866	0,0858	-0,1175	-0,1226
	-0,1246	0,1632	-0,0020	0,1016	0,1518	0,1662	0,1851	0,2040	0,1717	0,0572	-0,1193	-0,1262
% live cell		117,58	50,83	108,19	115,00	119,62	124,03	137,66	126,52	85,36	2,37	0,29
		116,96	49,52	91,81	112,31	118,19	125,90	133,62	120,43	73,69	1,63	-1,18
Average % live cell		117,27	50,17	100,00	113,66	118,90	124,96	135,64	123,47	79,53	2,00	-0,45
SEM		0,31	0,65	8,19	1,35	0,71	0,94	2,02	3,04	5,84	0,37	0,73
Normalized data % live cell		117,27	50,17	100,00	113,66	118,90	124,96	135,64	123,47	79,53	2,00	-0,45



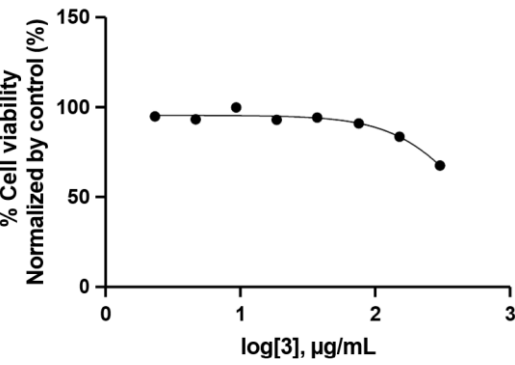
Media	Media +cell	Cisplatin	Solvent	Sample concentrations (µg/mL)							
				2,34	4,69	9,38	18,75	37,50	75,00	150,00	300,00
											




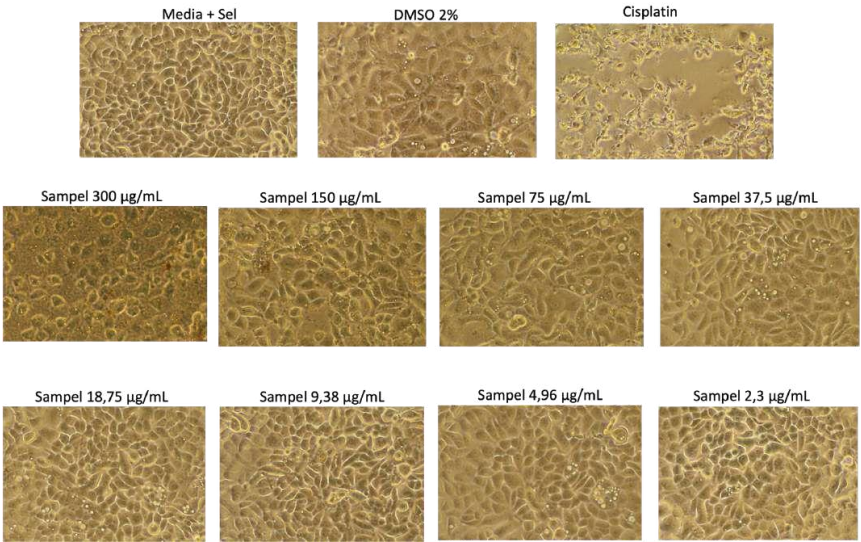
CV-1 cell morphology at each concentration of compound **2**

Figure S54. Results of cytotoxic activity of **3** against CV-1 cell line.

	Media	Media + cell	Cisplatin	Solvent	Sample concentrations (µg/mL)							
					2,34	4,69	9,38	18,75	37,50	75,00	150,00	300,00
Absorbance 570nm	0,4165	0,6597	0,5592	0,6652	0,6441	0,6231	0,6520	0,6504	0,6416	0,6214	0,6311	0,6229
	0,4796	0,6565	0,4082	0,6498	0,6503	0,6287	0,7295	0,6420	0,6444	0,6658	0,6517	0,6498
Absorbance 600nm	0,5388	0,3514	0,4926	0,3588	0,3832	0,3702	0,3580	0,3722	0,3713	0,3975	0,4297	0,5089
	0,6217	0,3466	0,3182	0,3662	0,3656	0,3496	0,4347	0,3904	0,3743	0,3769	0,4040	0,4508
Absorbance difference	-0,1223	0,3083	0,0666	0,3064	0,2609	0,2529	0,2940	0,2782	0,2703	0,2239	0,2014	0,1140
	-0,1421	0,3099	0,0900	0,2836	0,2847	0,2791	0,2948	0,2516	0,2701	0,2889	0,2477	0,1990
% live cell		103,11	46,54	102,67	92,02	90,15	99,77	96,07	94,22	83,36	78,09	57,63
		103,49	52,01	97,33	97,59	96,28	99,95	89,84	94,17	98,57	88,93	77,53
Average % live cell SEM		103,30	49,27	100,00	94,80	93,21	99,86	92,95	94,19	90,96	83,51	67,58
		0,19	2,74	2,67	2,79	3,07	0,09	3,11	0,02	7,61	5,42	9,95
Normalized data % live cell		103,30	49,27	100,00	94,80	93,21	99,86	92,95	94,19	90,96	83,51	67,58



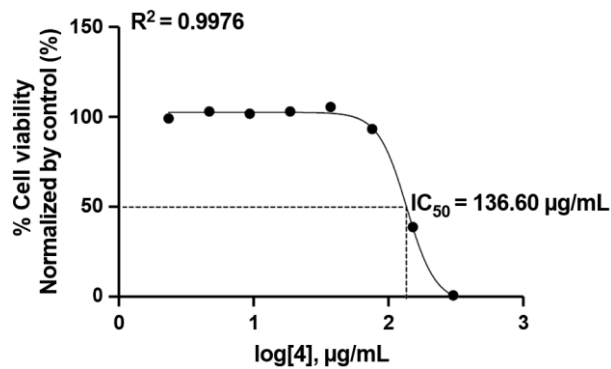
Media	Media +cell	Cisplatin	Solvent	Sample concentrations (µg/mL)							
				2,34	4,69	9,38	18,75	37,50	75,00	150,00	300,00
											




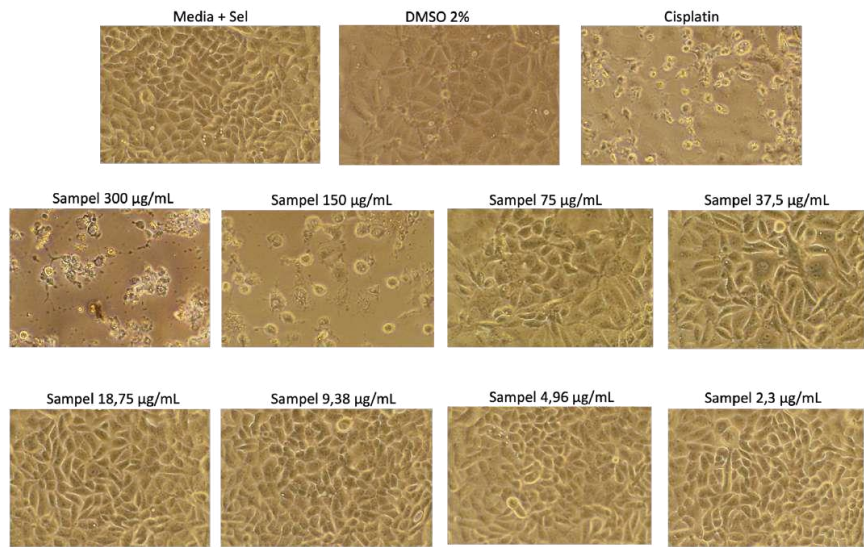
CV-1 cell morphology at each concentration of compound **3**

Figure S55. Results of cytotoxic activity of **4** against CV-1 cell line.

	Media	Media + cell	Cisplatin	Solvent	Sample concentrations (µg/mL)							
					2,34	4,69	9,38	18,75	37,50	75,00	150,00	300,00
Absorbance 570nm	0,4640	0,6657	0,5603	0,6378	0,6427	0,6352	0,6466	0,6474	0,6526	0,6323	0,5216	0,5649
	0,4727	0,6893	0,5760	0,6586	0,6534	0,6664	0,6475	0,6099	0,6818	0,6544	0,5656	0,4729
Absorbance 600nm	0,6025	0,3511	0,4973	0,3726	0,3847	0,3705	0,3526	0,3531	0,3805	0,3779	0,5391	0,7128
	0,6115	0,3249	0,5070	0,3652	0,3608	0,3480	0,3687	0,3207	0,3496	0,4067	0,5019	0,5969
Absorbance difference	-0,1385	0,3146	0,0630	0,2652	0,2580	0,2647	0,2940	0,2943	0,2721	0,2544	-0,0175	-0,1479
	-0,1388	0,3644	0,0690	0,2934	0,2926	0,3184	0,2788	0,2892	0,3322	0,2477	0,0637	-0,1240
% live cell		108,45	48,25	96,63	94,90	96,51	103,52	103,59	98,28	94,04	28,99	-2,21
		120,36	49,68	103,37	103,18	109,36	99,88	102,37	112,66	92,44	48,41	3,51
Average % live cell		114,40	48,97	100,00	99,04	102,93	101,70	102,98	105,47	93,24	38,70	0,65
SEM		5,96	0,72	3,37	4,14	6,42	1,82	0,61	7,19	0,80	9,71	2,86
Normalized data % live cell		114,40	48,97	100,00	99,04	102,93	101,70	102,98	105,47	93,24	38,70	0,65



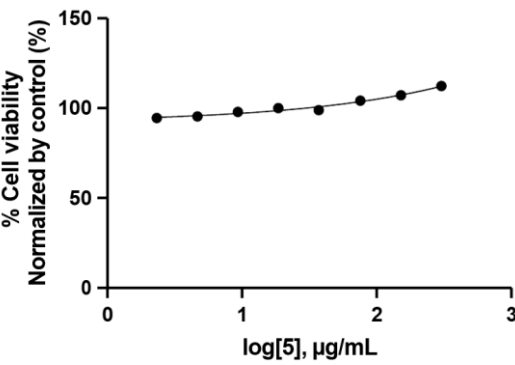
Media	Media +cell	Cisplatin	Solvent	Sample concentrations (µg/mL)							
				2,34	4,69	9,38	18,75	37,50	75,00	150,00	300,00
											




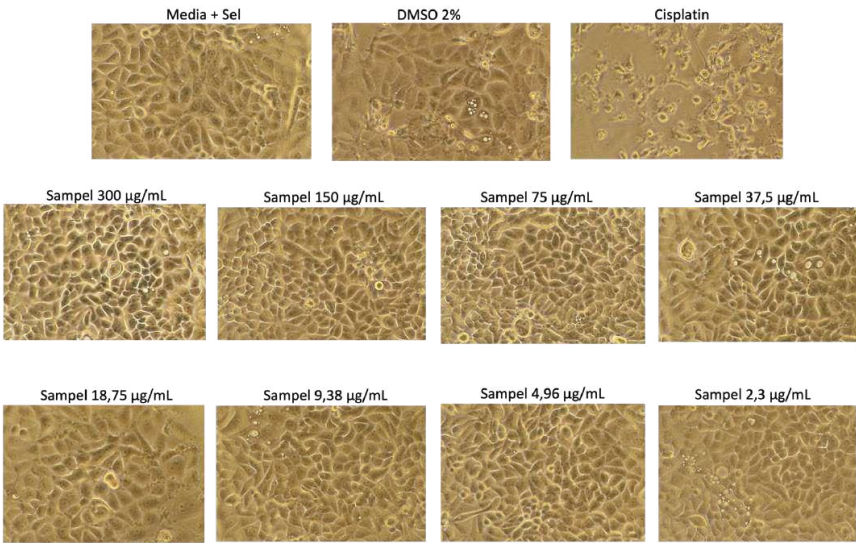
CV-1 cell morphology at each concentration of compound **4**

Figure S56. Results of cytotoxic activity of **5** against CV-1 cell line.

	Media	Media + cell	Cisplatin	Solvent	Sample concentrations (µg/mL)							
					2,34	4,69	9,38	18,75	37,50	75,00	150,00	300,00
Absorbance 570nm	0,4687	0,6433	0,5625	0,6487	0,6356	0,6404	0,6260	0,6342	0,6365	0,6495	0,6546	0,6657
	0,4708	0,6554	0,5644	0,6482	0,6192	0,6210	0,6440	0,6267	0,6308	0,6475	0,6577	0,6626
Absorbance 600nm	0,6093	0,3598	0,5112	0,3601	0,3625	0,3558	0,3648	0,3510	0,3416	0,3308	0,3360	0,3254
	0,6111	0,3561	0,5117	0,3670	0,3697	0,3756	0,3544	0,3410	0,3660	0,3619	0,3469	0,3298
Absorbance difference	-0,1406	0,2835	0,0513	0,2886	0,2731	0,2846	0,2612	0,2832	0,2949	0,3187	0,3186	0,3403
	-0,1403	0,2993	0,0527	0,2812	0,2495	0,2454	0,2896	0,2857	0,2648	0,2856	0,3108	0,3328
% live cell		99,67	45,08	100,87	97,23	99,93	94,43	99,60	102,35	107,95	107,92	113,02
		103,39	45,41	99,13	91,68	90,71	101,10	100,19	95,27	100,16	106,09	111,26
Average % live cell		101,53	45,25	100,00	94,45	95,32	97,77	99,89	98,81	104,06	107,01	112,14
SEM		1,86	0,16	0,87	2,77	4,61	3,34	0,29	3,54	3,89	0,92	0,88
Normalized data % live cell		101,53	45,25	100,00	94,45	95,32	97,77	99,89	98,81	104,06	107,01	112,14



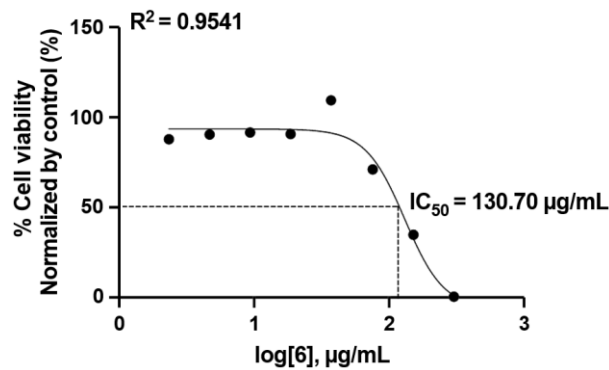
Media	Media +cell	Cisplatin	Solvent	Sample concentrations (µg/mL)							
				2,34	4,69	9,38	18,75	37,50	75,00	150,00	300,00
											




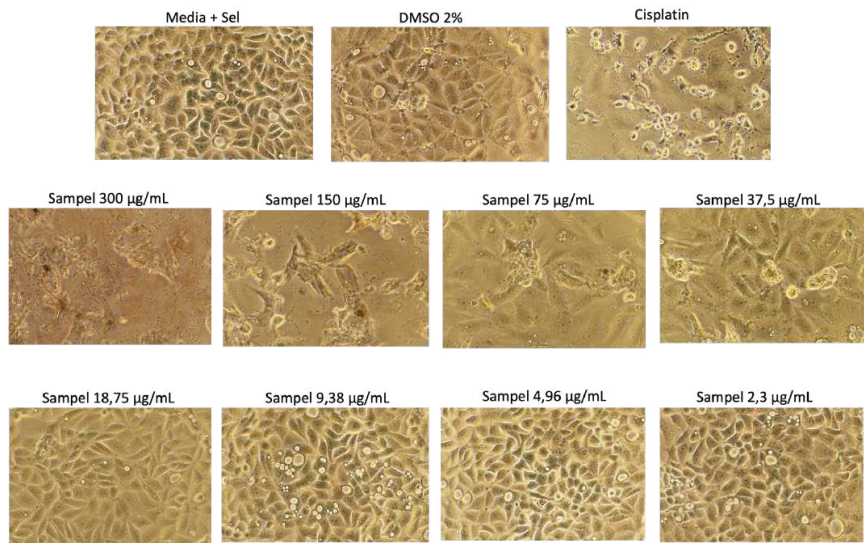
CV-1 cell morphology at each concentration of compound **5**

Figure S57. Results of cytotoxic activity of **6** against CV-1 cell line.

	Media	Media + cell	Cisplatin	Solvent	Sample concentrations (µg/mL)							
					2,34	4,69	9,38	18,75	37,50	75,00	150,00	300,00
Absorbance 570nm	0,5265	0,7176	0,6352	0,7629	0,7335	0,7533	0,7533	0,7493	0,7956	0,6623	0,6026	0,5243
	0,5327	0,7246	0,6209	0,7721	0,7248	0,7415	0,7439	0,7256	0,7917	0,7524	0,6552	0,5266
Absorbance 600nm	0,5257	0,2722	0,4256	0,2385	0,2696	0,2757	0,2699	0,2697	0,2211	0,3672	0,4578	0,5227
	0,5322	0,2699	0,4184	0,2511	0,2693	0,2728	0,2685	0,2560	0,2214	0,3031	0,4340	0,5217
Absorbance difference	0,0008	0,4454	0,2096	0,5244	0,4639	0,4776	0,4834	0,4796	0,5745	0,2951	0,1448	0,0016
	0,0005	0,4547	0,2025	0,5210	0,4555	0,4687	0,4754	0,4696	0,5703	0,4493	0,2212	0,0049
% live cell		98,97	46,50	116,54	103,08	106,13	107,42	106,58	127,69	65,52	32,08	0,21
		101,03	44,92	115,79	101,21	104,15	105,64	104,35	126,76	99,83	49,08	0,95
Average % live cell		100,00	45,71	116,17	102,15	105,14	106,53	105,46	127,23	82,68	40,58	0,58
SEM		1,03	0,79	0,38	0,93	0,99	0,89	1,11	0,47	17,16	8,50	0,37
Normalized data % live cell		86,08	39,34	100,00	87,93	90,51	91,71	90,79	109,52	71,17	34,93	0,50



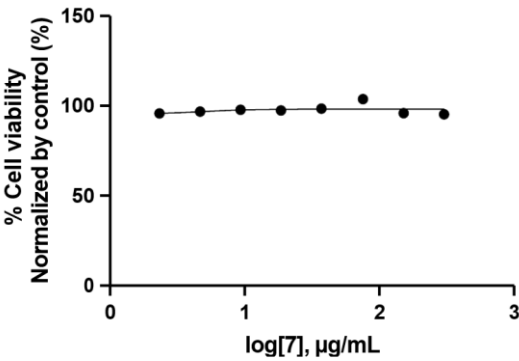
Media	Media +cell	Cisplatin	Solvent	Sample concentrations (µg/mL)							
				2,34	4,69	9,38	18,75	37,50	75,00	150,00	300,00
											




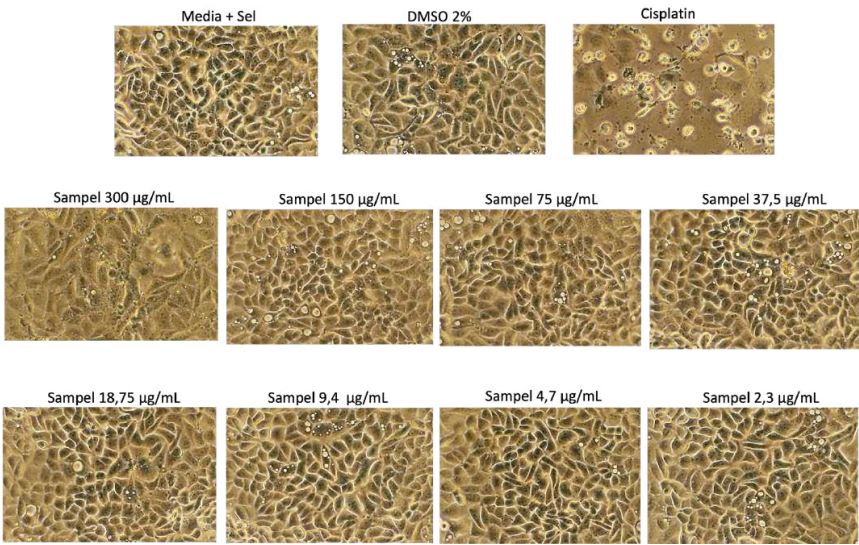
CV-1 cell morphology at each concentration of compound **6**

Figure S58. Results of cytotoxic activity of **7** against CV-1 cell line.

	Media	Media + cell	Cisplatin	Solvent	Sample concentrations (µg/mL)							
					2,34	4,69	9,38	18,75	37,50	75,00	150,00	300,00
Absorbance 570nm	0,5242	0,6329	0,5616	0,6183	0,6212	0,6140	0,6131	0,6115	0,6205	0,6185	0,6231	0,6225
	0,4539	0,6153	0,5522	0,6095	0,6111	0,6084	0,6150	0,6161	0,6215	0,6760	0,6400	0,6143
Absorbance 600nm	0,6704	0,4350	0,5451	0,4271	0,4531	0,4413	0,4347	0,4414	0,4373	0,4385	0,4509	0,4594
	0,5781	0,4504	0,5541	0,4498	0,4549	0,4511	0,4572	0,4523	0,4644	0,4833	0,4874	0,4562
Absorbance difference	-0,1462	0,1979	0,0165	0,1912	0,1681	0,1727	0,1784	0,1701	0,1832	0,1800	0,1722	0,1631
	-0,1242	0,1649	-0,0019	0,1597	0,1562	0,1573	0,1578	0,1638	0,1571	0,1927	0,1526	0,1581
% live cell		107,23	48,83	105,07	97,63	99,11	100,95	98,28	102,49	101,46	98,95	96,02
		96,60	42,91	94,93	93,80	94,16	94,32	96,25	94,09	105,55	92,64	94,41
Average % live cell		101,92	45,87	100,00	95,72	96,64	97,63	97,26	98,29	103,51	95,80	95,22
SEM		5,31	2,96	5,07	1,92	2,48	3,32	1,01	4,20	2,04	3,15	0,80
Normalized data % live cell		101,92	45,87	100,00	95,72	96,64	97,63	97,26	98,29	103,51	95,80	95,22



Media	Media +cell	Cisplatin	Solvent	Sample concentrations (µg/mL)							
				2,34	4,69	9,38	18,75	37,50	75,00	150,00	300,00
											



CV-1 cell morphology at each concentration of compound **7**

Figure S59. TLC profile of compounds **1-7**.

After sprayed with
 H_2SO_4 in EtOH
followed by heating

Under UV 365 nm

Under UV 254 nm

