

SUPPLEMENTARY MATERIALS

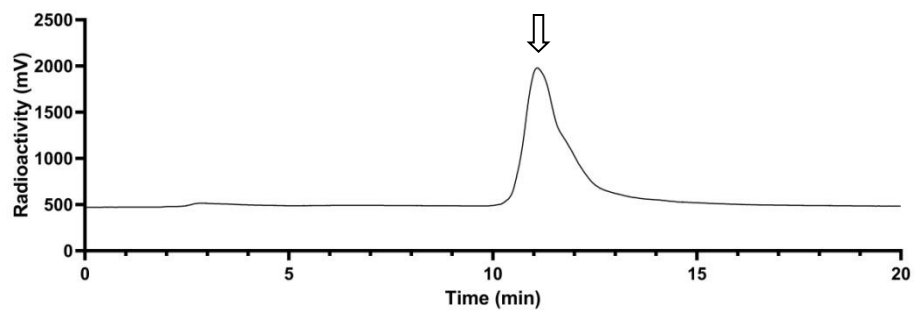


Figure S1. A representative QC radio-HPLC chromatogram of [^{99m}Tc]Tc-EDDA/HYNIC-iPSMA. The desired product peak is pointed by an arrow.

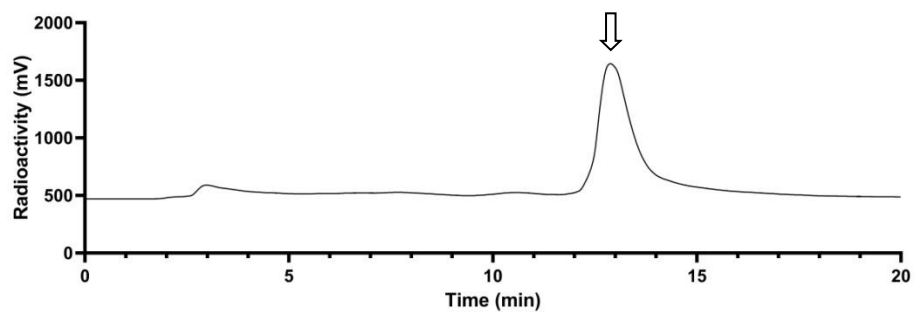


Figure S2. A representative QC radio-HPLC chromatogram of [^{99m}Tc]Tc-EDDA-HTK03180. The desired product peak is pointed by an arrow.

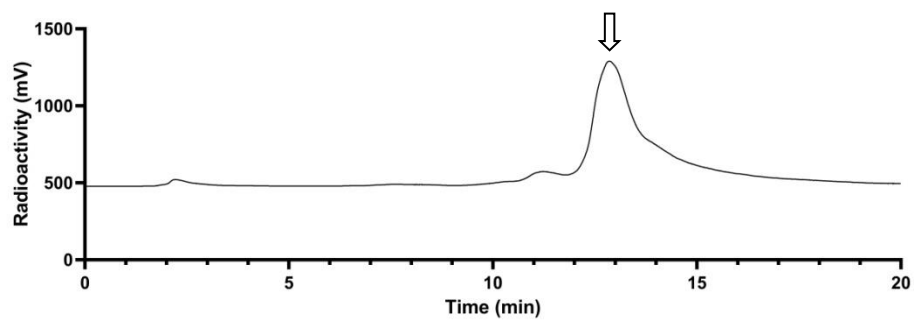


Figure S3. A representative QC radio-HPLC chromatogram of [^{99m}Tc]Tc-EDDA-KL01099. The desired product peak is pointed by an arrow.

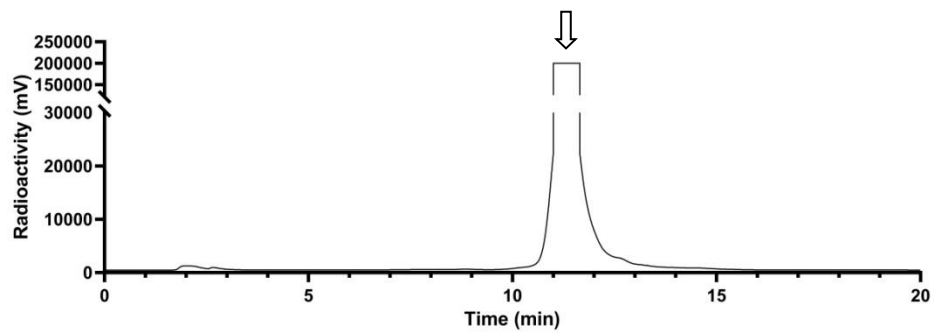


Figure S4. A representative QC radio-HPLC chromatogram of [^{99m}Tc]Tc-EDDA-KL01127. The desired product peak is pointed by an arrow.

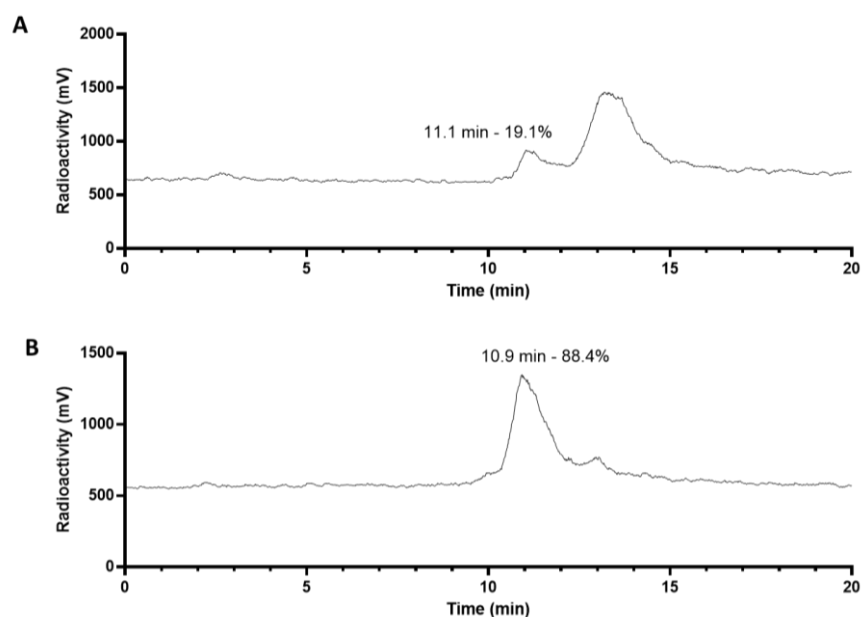


Figure S5. Representative radio-HPLC chromatograms of (A) plasma and (B) urine samples collected at 15 min post-injection from mice injected with [^{99m}Tc]Tc-EDDA/HYNIC-iPSMA. The peaks with the percentages are the intact tracer.

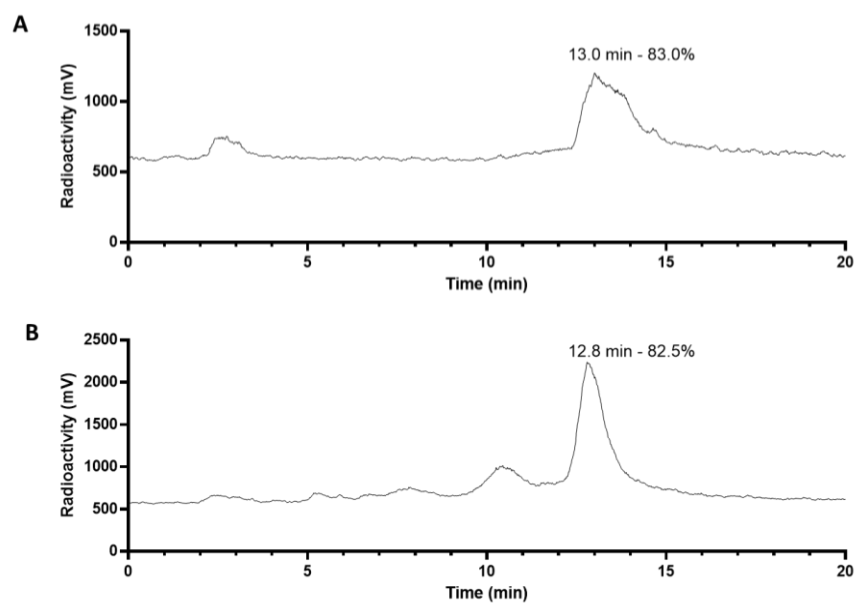


Figure S6. Representative radio-HPLC chromatograms of (A) plasma and (B) urine samples collected at 15 min post-injection from mice injected with [^{99m}Tc]Tc-EDDA-HTK03180. The peaks with the percentages are the intact tracer.

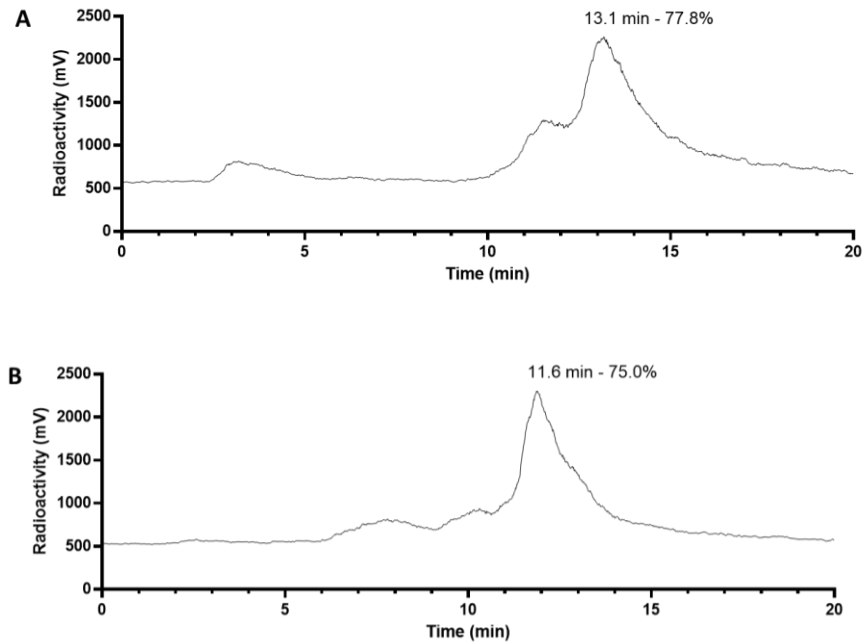


Figure S7. Representative radio-HPLC chromatograms of (A) plasma and (B) urine samples collected at 15 min post-injection from mice injected with [^{99m}Tc]Tc-EDDA-KL01099. The peaks with the percentages are the intact tracer.

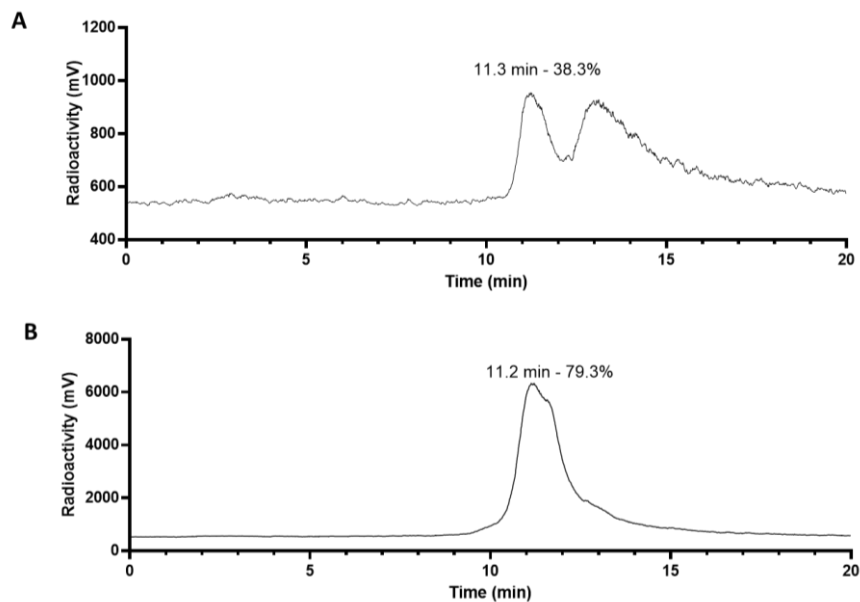


Figure S8. Representative radio-HPLC chromatograms of (A) plasma and (B) urine samples collected at 15 min post-injection from mice injected with [^{99m}Tc]Tc-EDDA-KL01127. The peaks with the percentages are the intact tracer.

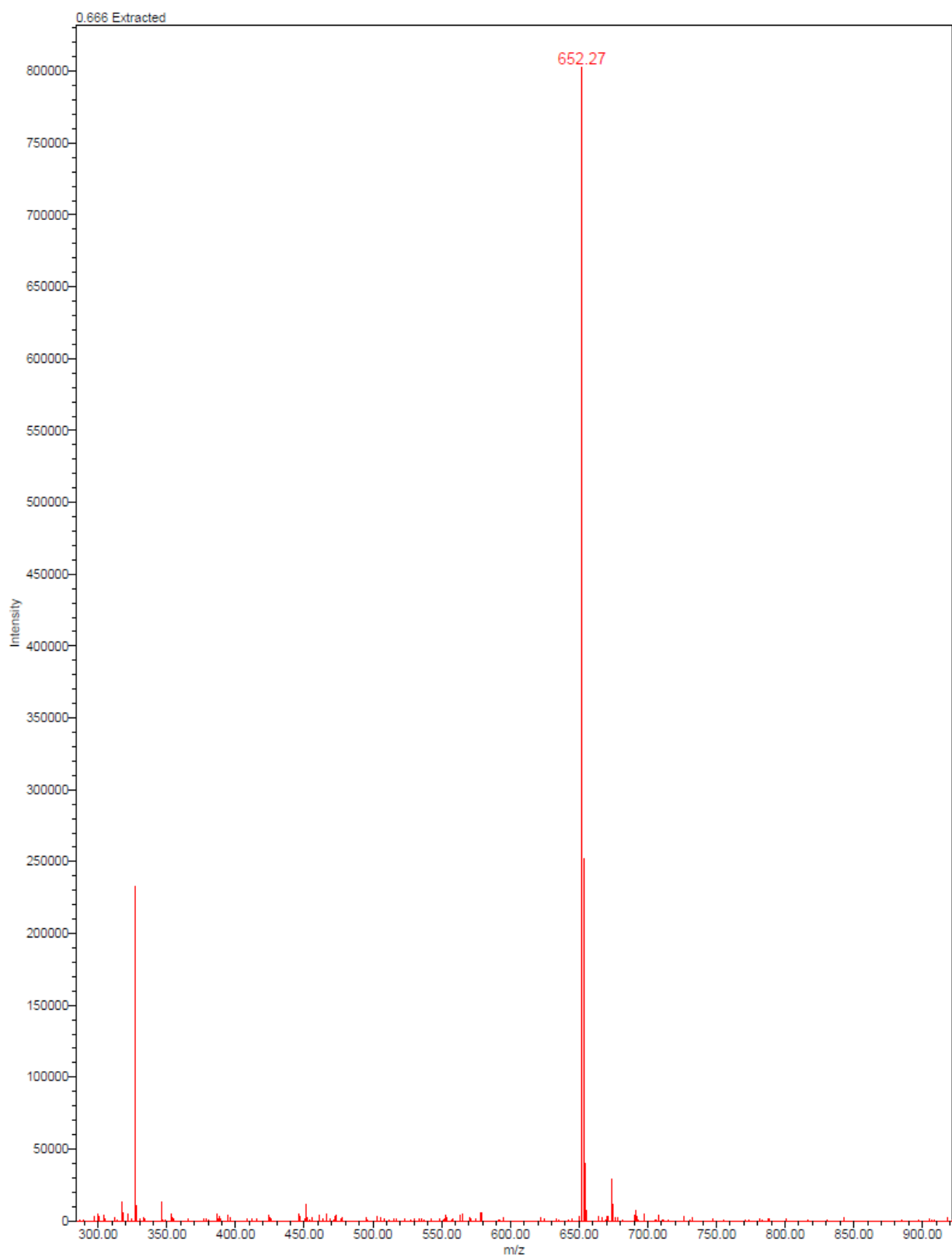


Figure S9. A representative MS spectrum of HYNIC-iPSMA. The calculated m/z value for $[M+H]^+$ is 652.3; observed 652.3.

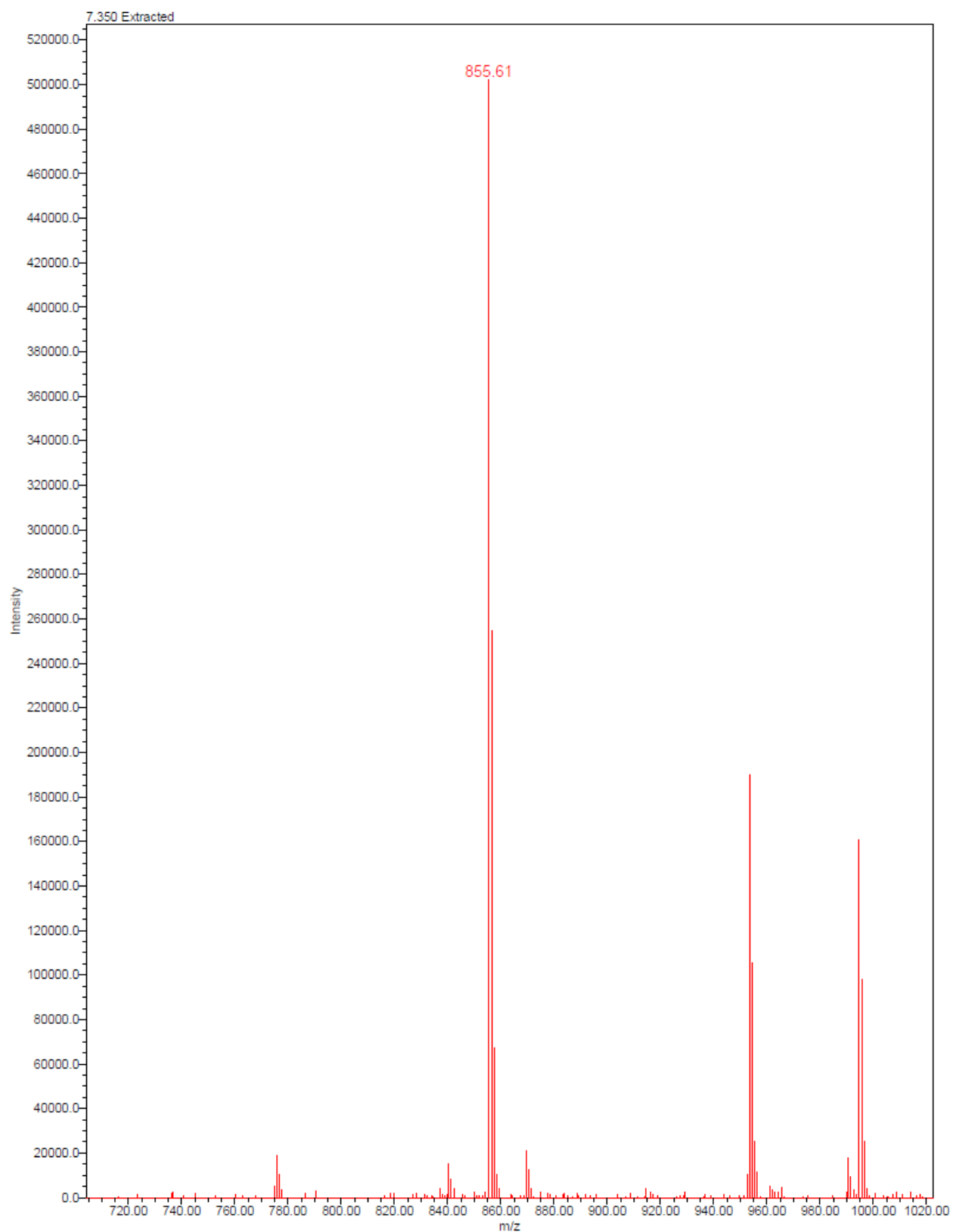


Figure S10. A representative MS spectrum of HTK03180. The calculated m/z value for $[M+H]^+$ is 855.4; observed 855.6.

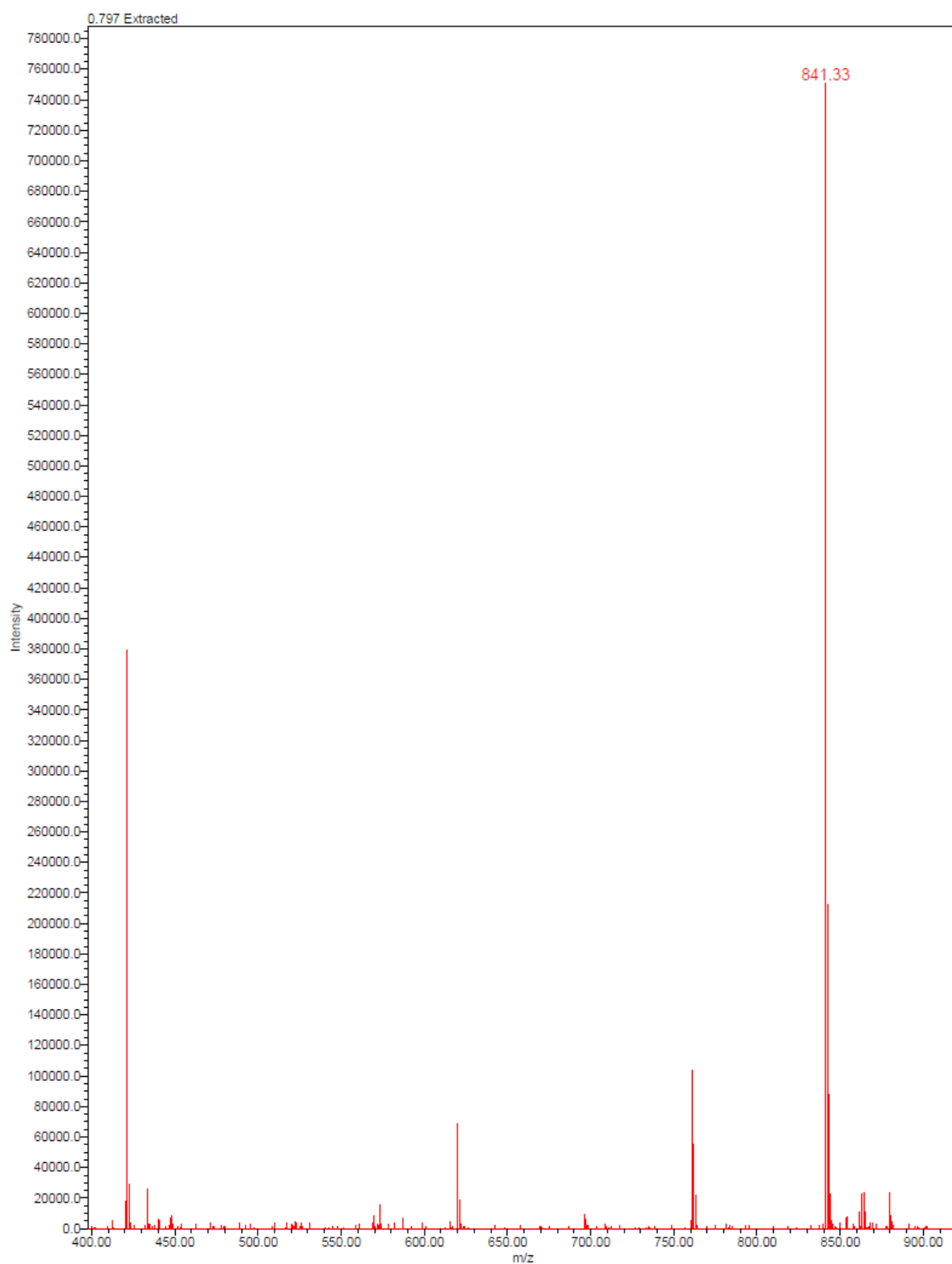


Figure S11. A representative MS spectrum of KL01099. The calculated m/z value for $[M+H]^+$ is 841.4; observed 841.3.

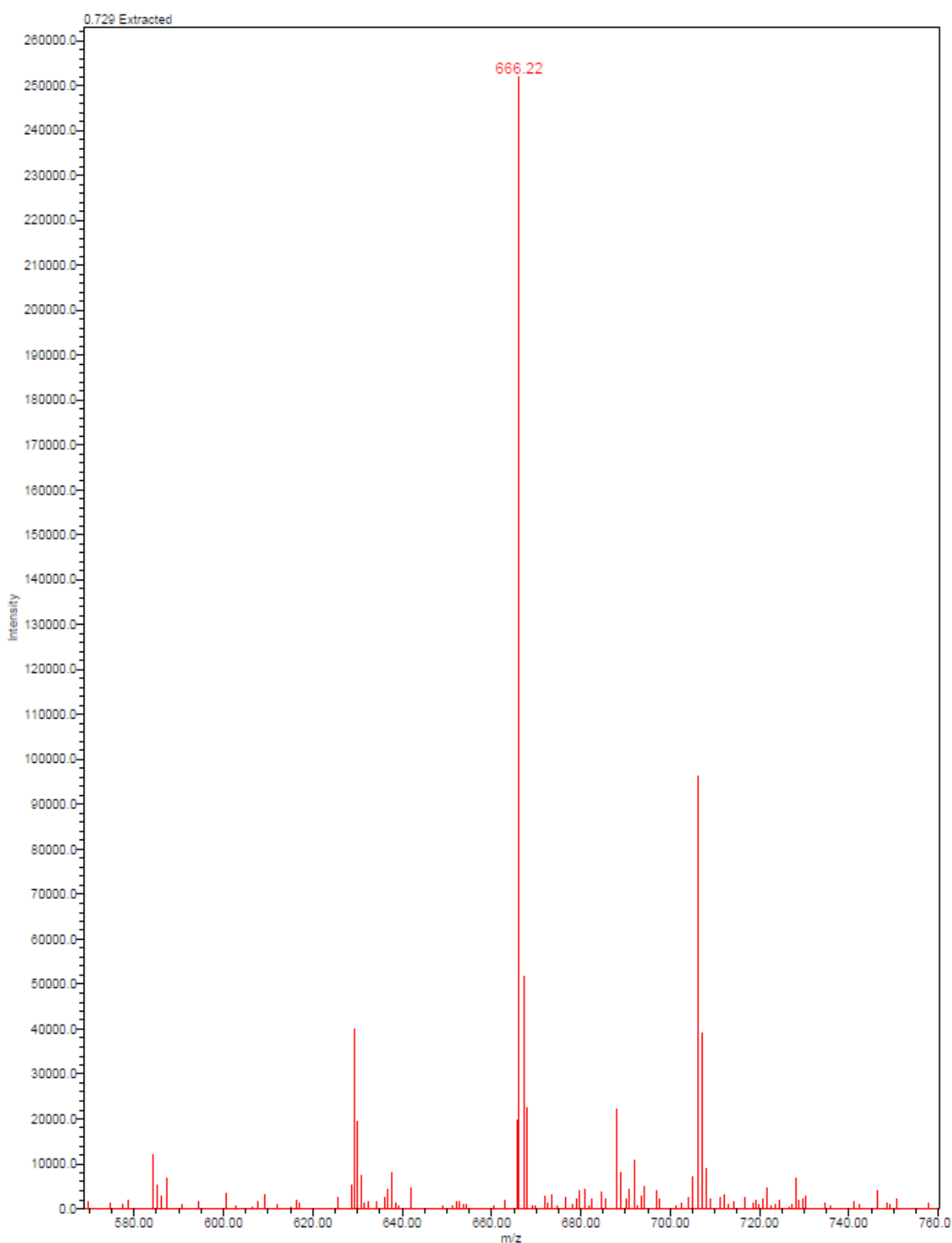


Figure S12. A representative MS spectrum of KL01127. The calculated m/z value for $[M+H]^+$ is 666.3; observed 666.2.