

-Supplementary Materials-

***Mesosphaerum suaveolens* essential oil attenuates inflammatory response and oxidative stress in LPS-stimulated RAW 264.7 macrophages by regulating NF- κ B signaling pathway**

Omprakash Mohanta, Asit Ray, Sudipta Jena, Ambika Sahoo, Soumya Swarup Panda, Prabhat Kumar Das, Sanghamitra Nayak and Pratap Chandra Panda*

Centre for Biotechnology, Siksha 'O' Anusandhan (Deemed to be University),
Kalinga Nagar, Bhubaneswar-751003, India

* Correspondence: author Email: pcpanda2001@yahoo.co.in

Contents:

Figure S1. GC-MS chromatogram of the *Mesosphaerum suaveolens* leaf essential oil (MSLEO).

Figure S2. Image of *Mesosphaerum suaveolens* plant

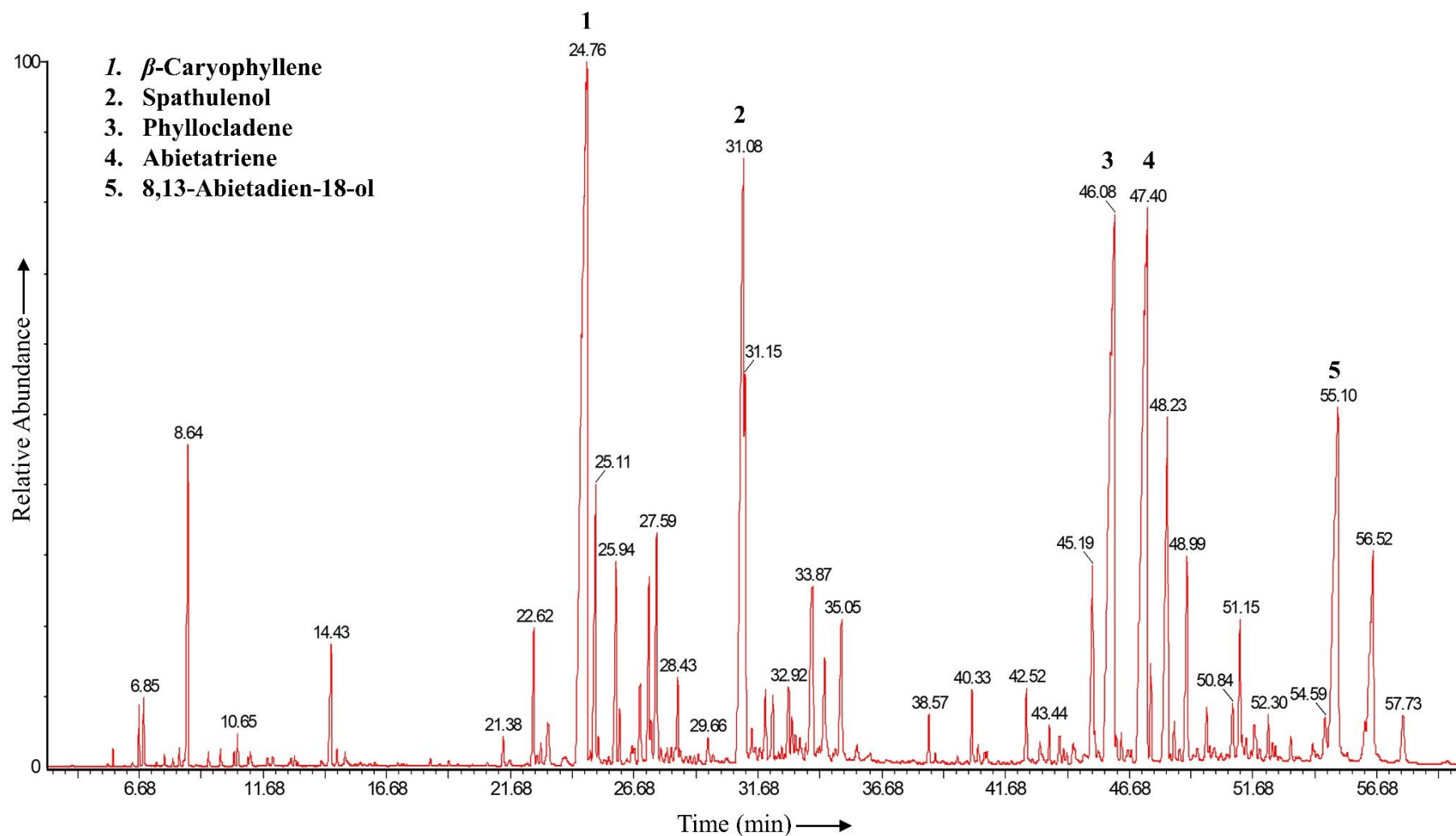


Figure S1. A representative GC-MS chromatogram of *Mesosphaerum suaveolens* leaf essential oil (MSLEO). Peaks corresponds to the five most dominant constituents, labeled as 1 to 5.



Figure S2. *Mesosphaerum suaveolens* plant