

Figure S1. Expression of the recombinant protein (a) Coomassie staining; (b) Immunoblotting with Penta-His tag monoclonal antibody.

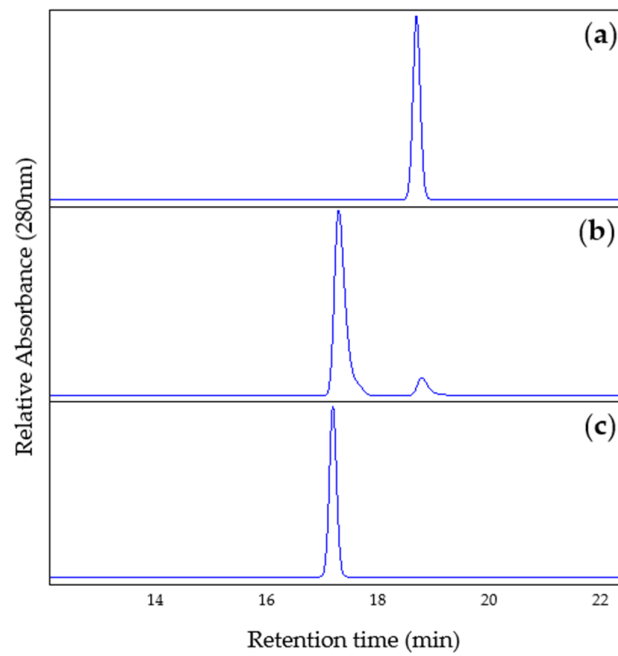


Figure S2. HPLC analysis of the transfer of Gal to pNP- α -GalNAc. (a) Standard pNP- α -GalNAc; (b) incubation for 2 hours; (c) Standard pNP- α -GalNAc- β -Gal.

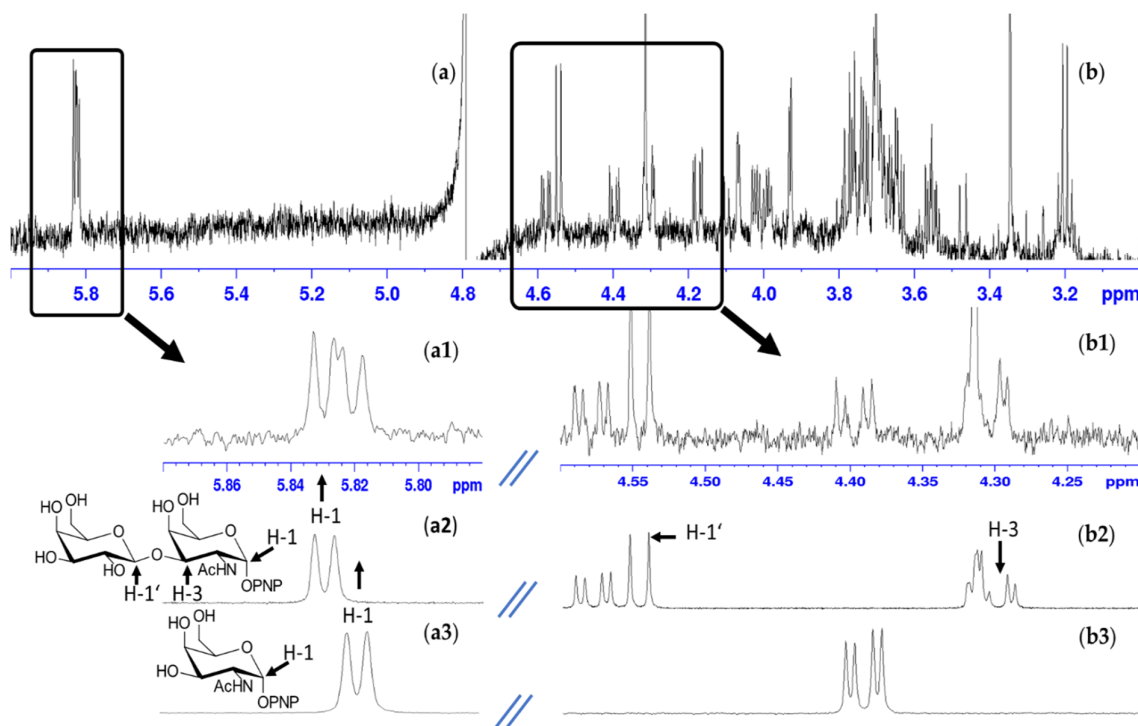


Figure S3. ^1H NMR of the incubation assay compared to ^1H NMR spectra of pNP-GalNAc and Gal- β -(1 \rightarrow 3)GalNAc- α -pNP. (a1) Expanded anomeric region around 5.8 ppm shows a mixture of pNP-GalNAc (a3) and Gal- β -(1 \rightarrow 3)GalNAc- α -pNP (a2); (b1) The core region between 4.6 and 4.2 ppm shows the presence of the β configured position 1 of Gal and glycosylated position 3 of pNP-GalNAc (b2); (a2) and (b2) show expanded ^1H NMR view of commercial available Gal- β -(1 \rightarrow 3)GalNAc- α -pNP reference; (a3) and (b3) show expanded ^1H NMR view of commercial available pNP-GalNAc reference.