

Supporting Information

Self-assembly of palmitic acid in the presence of choline hydroxide

Huifang Xu ^{1,*}, Xin Liang ¹, Song Lu ¹, Meihua Gao ^{2,*}, Sijia Wang ¹, Yuanyuan Li ¹

¹ College of Pharmacy, Henan University of Chinese Medicine, Zhengzhou 450046, P.R. China

² School of Materials and Chemical Engineering, Xuzhou University of Technology, Xuzhou 221018, P.R. China

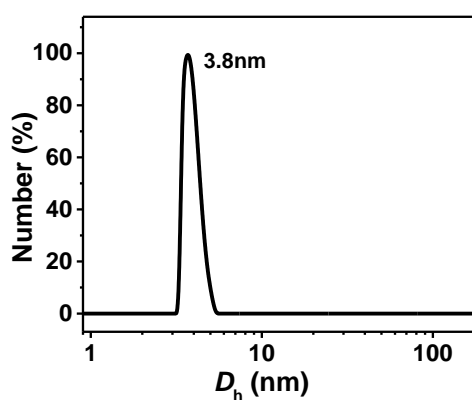


Figure S1. Size distribution of the lower phase of the PA/ChOH system at $R = 0.5$.

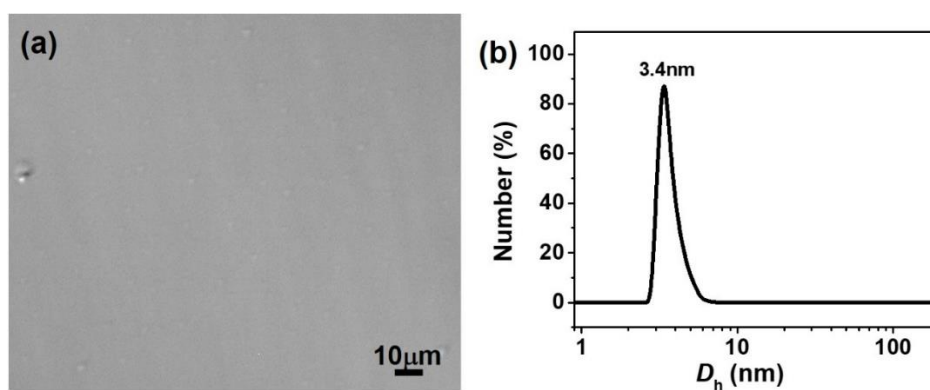


Figure S2. (a) Phase contrast image and (b) size distribution of the lower phase of the PA/ChOH system at $R = 0.6$.

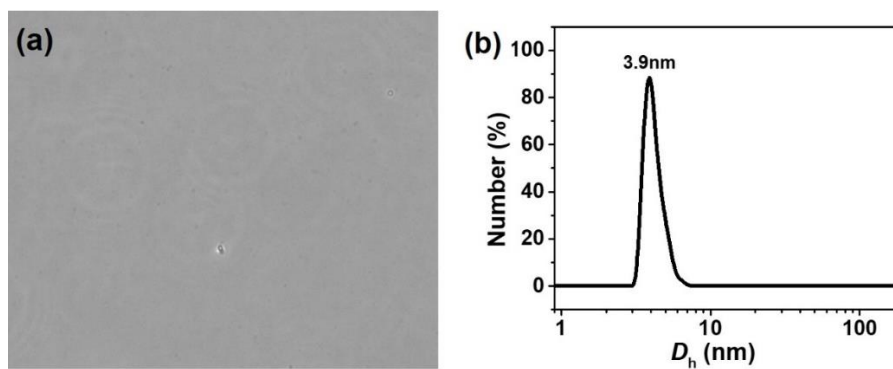


Figure S3. (a) Phase contrast image and (b) size distribution of the PA/ChOH system at $R = 1.0$.

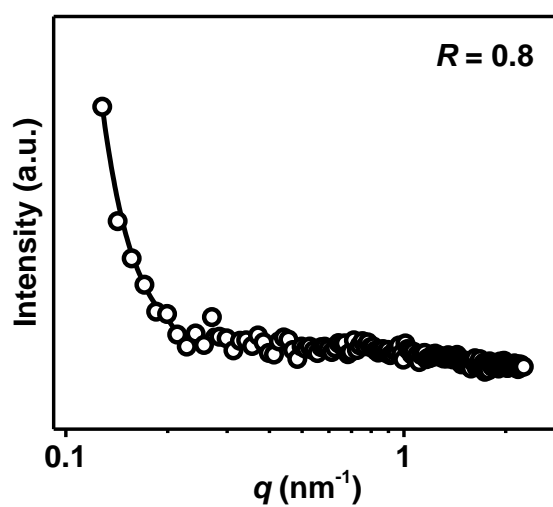


Figure S4. SAXS pattern for the PA/ChOH system at $R = 0.8$ in Region V.

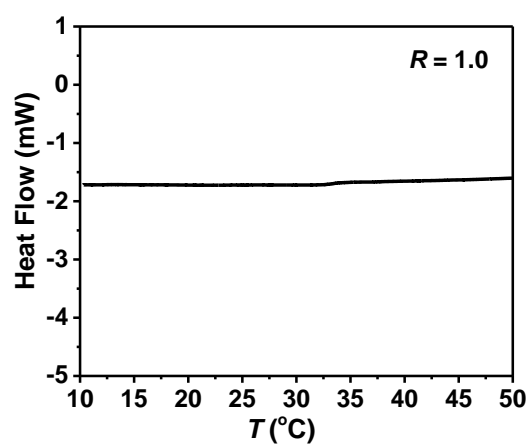


Figure S5. DSC curve for the PA/ChOH system at $R = 1.0$.

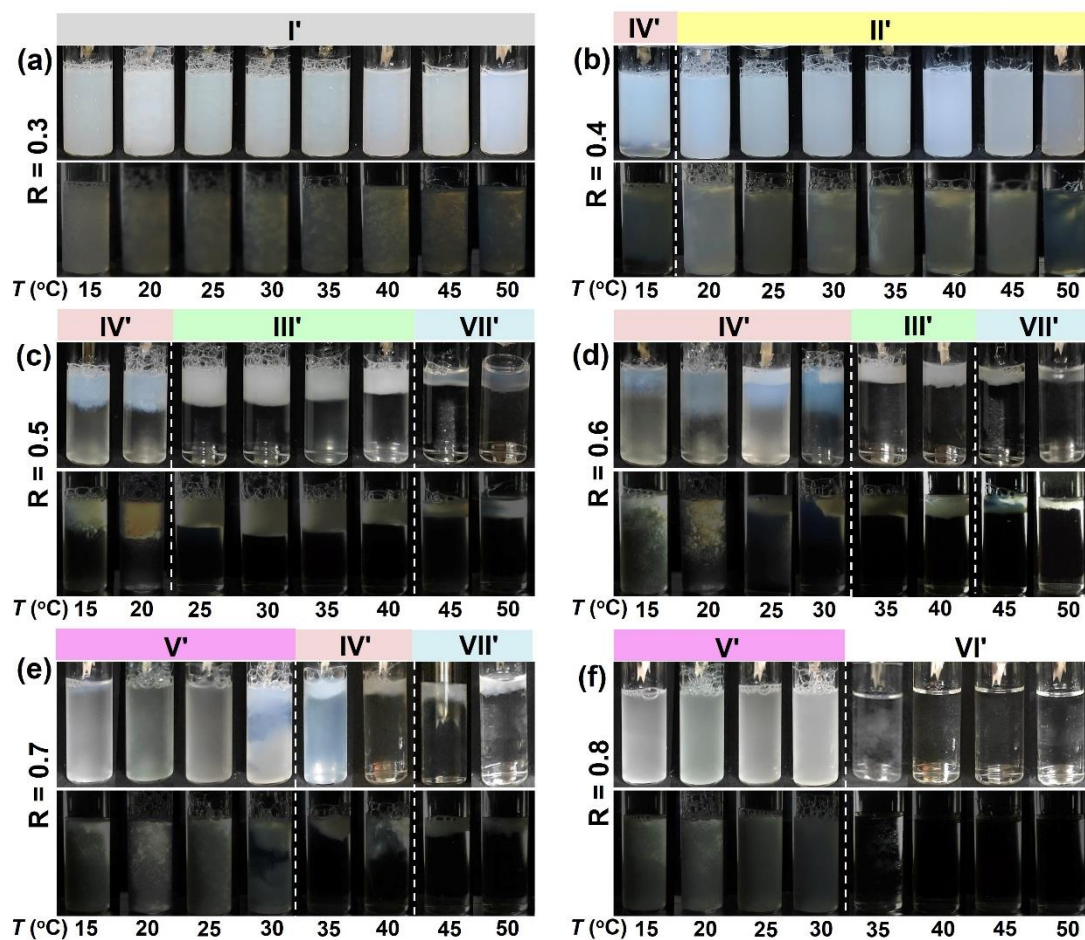


Figure S6. Photographs of PA/ChOH systems in water at different T with (top) and without (down) crossed polarizers. (a) $R = 0.3$, (b) $R = 0.4$, (c) $R = 0.5$, (d) $R = 0.6$, (e) $R = 0.7$, (f) $R = 0.8$.

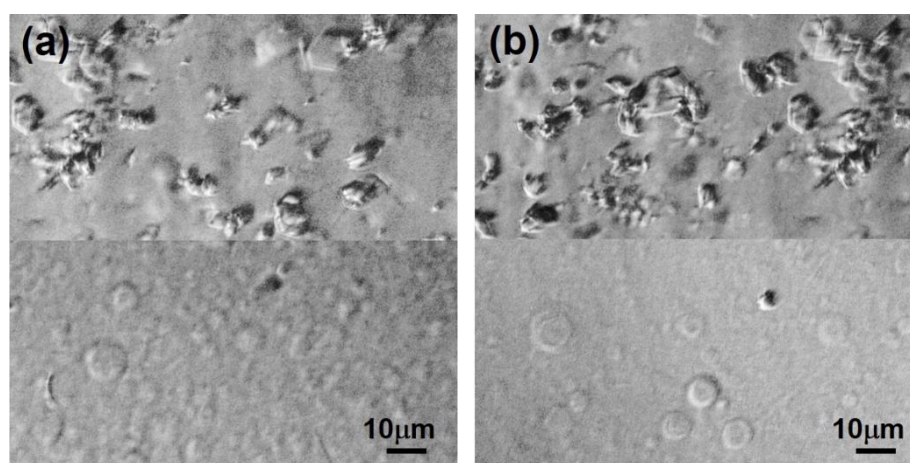


Figure S7. Phase contrast images for the PA/ChOH systems at (a) $R = 0.3, T = 15\text{ °C}$ and (b) $R = 0.3, T = 50\text{ °C}$.

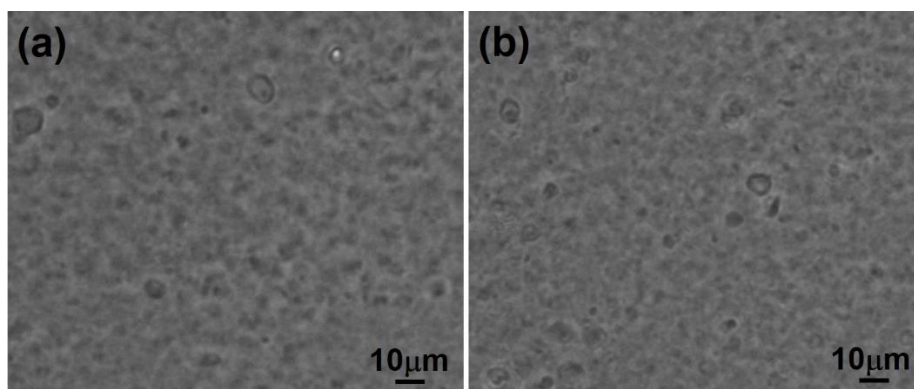


Figure S8. Phase contrast images for the PA/ChOH systems at $R = 0.4$. (a) $T = 35\text{ }^{\circ}\text{C}$,
(b) $T = 50\text{ }^{\circ}\text{C}$.