

Effects of *Melaleuca alternifolia* Chell (Tea Tree) and *Eucalyptus globulus* Labill. Essential Oils on Antibiotic-Resistant Bacterial Biofilms

Ramona Iseppi ¹, Martina Mariani ², Stefania Benvenuti¹, Eleonora Truzzi ¹ and Patrizia Messi ^{1*}

¹ Department of Life Sciences, University of Modena and Reggio Emilia, Via G. Campi 287, 41125 Modena, Italy

² Department of Emergency Surgery, Anesthesia and Intensive Care Unit, A.O.R.N. Antonio Cardarelli, via A. Cardarelli 9, 80131 Naples, Italy

* Correspondence: patrizia.messi@unimore.it

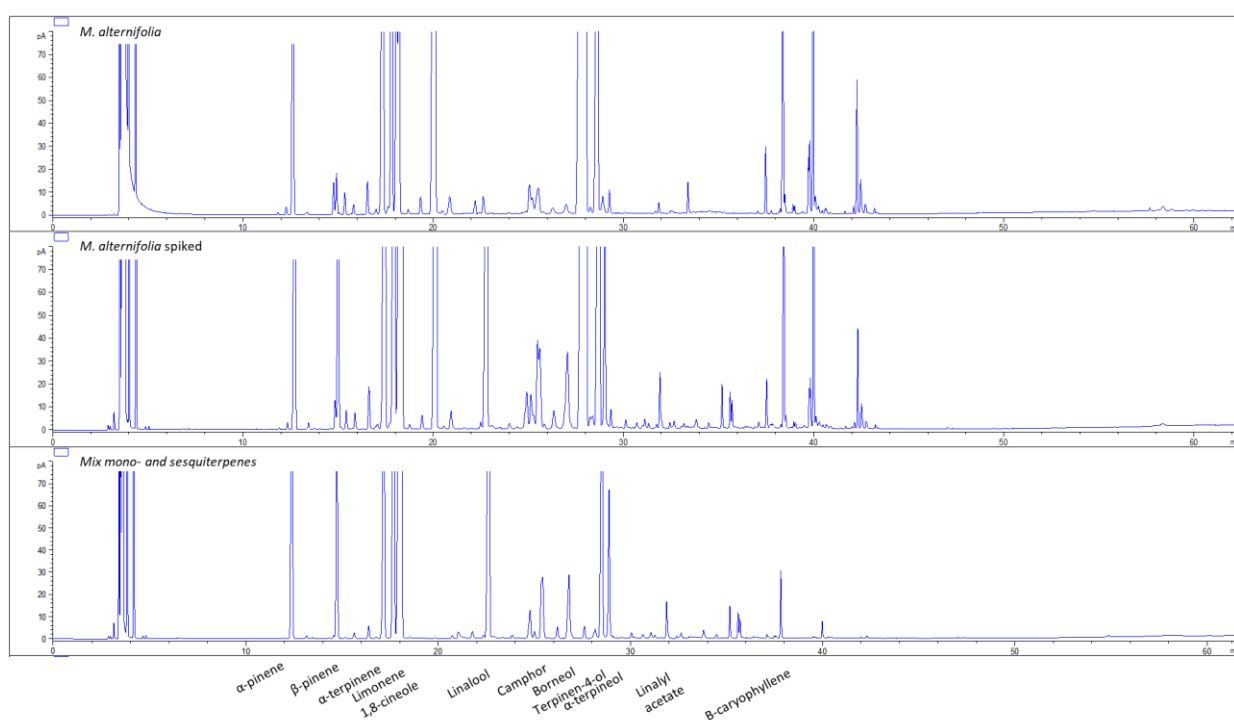


Figure S1: GC chromatograms of pure (a) and spiked (b) *Melaleuca alternifolia* essential oil with most abundant mono- and sesquiterpenes (c).

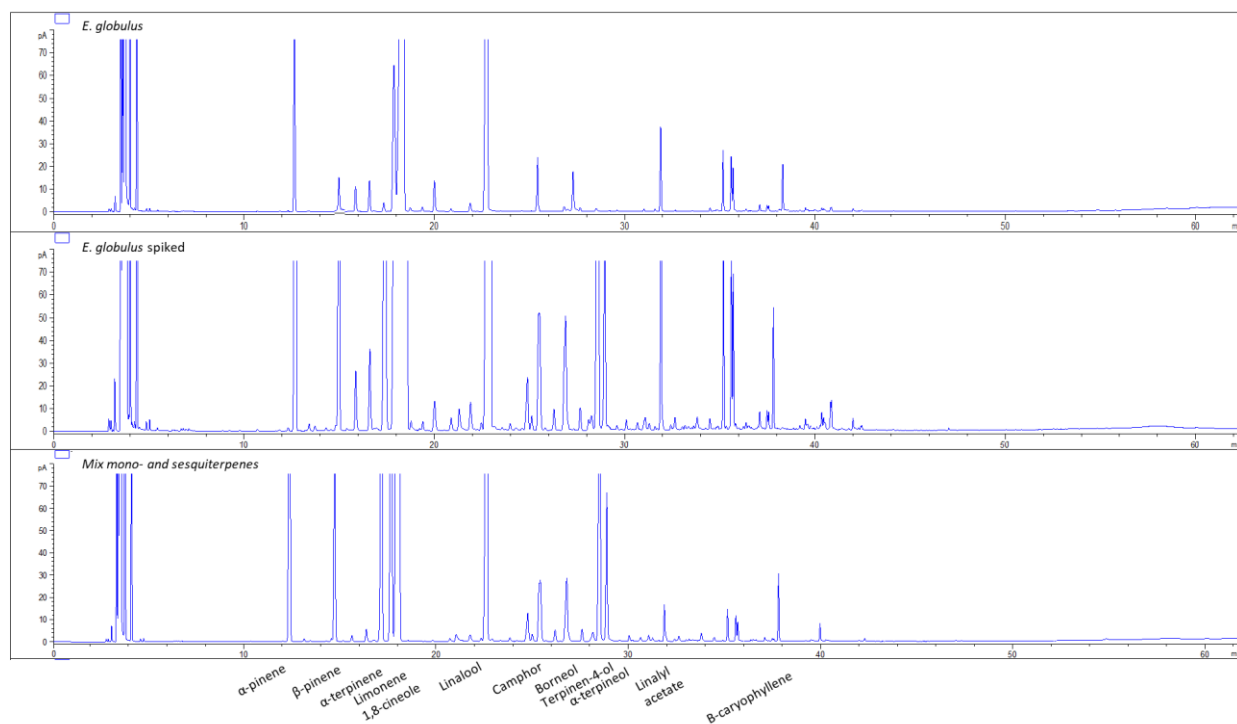


Figure S2: GC chromatograms of pure (a) and spiked (b) *Eucalyptus globulus* essential oil with most abundant mono- and sesquiterpenes (c).