

## Supplementary Material

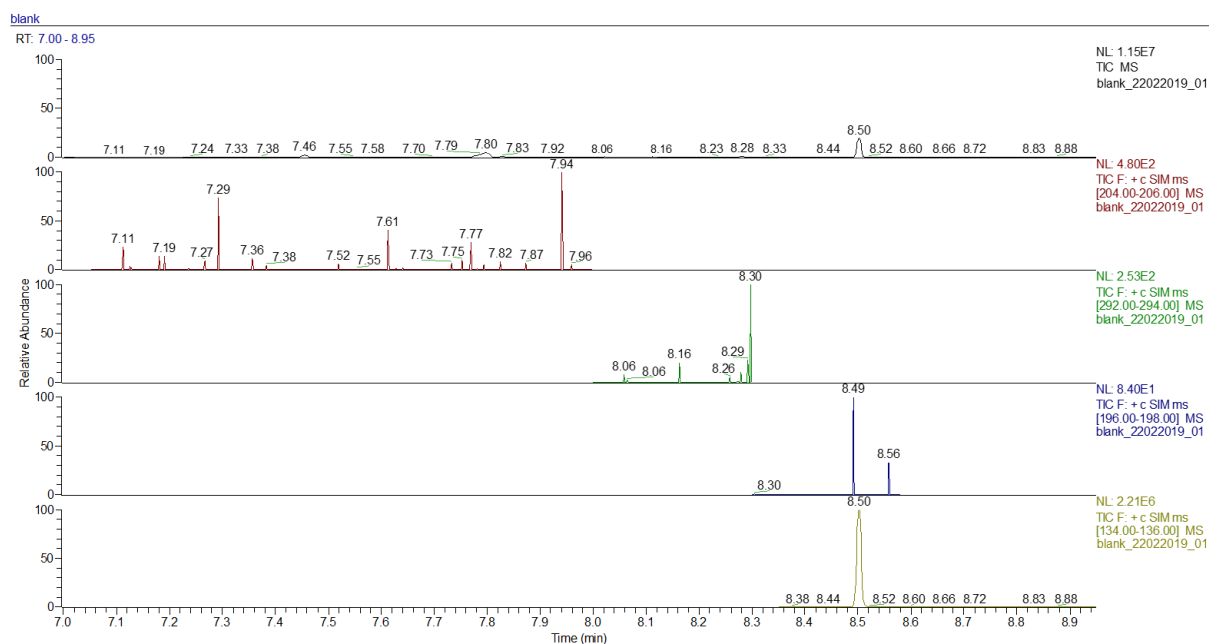


Figure S1. Blank chromatogram after addition of derivatization agent and ISTD acquired using the GC-MS methodology developed for the measurement of PG, VG and EM.

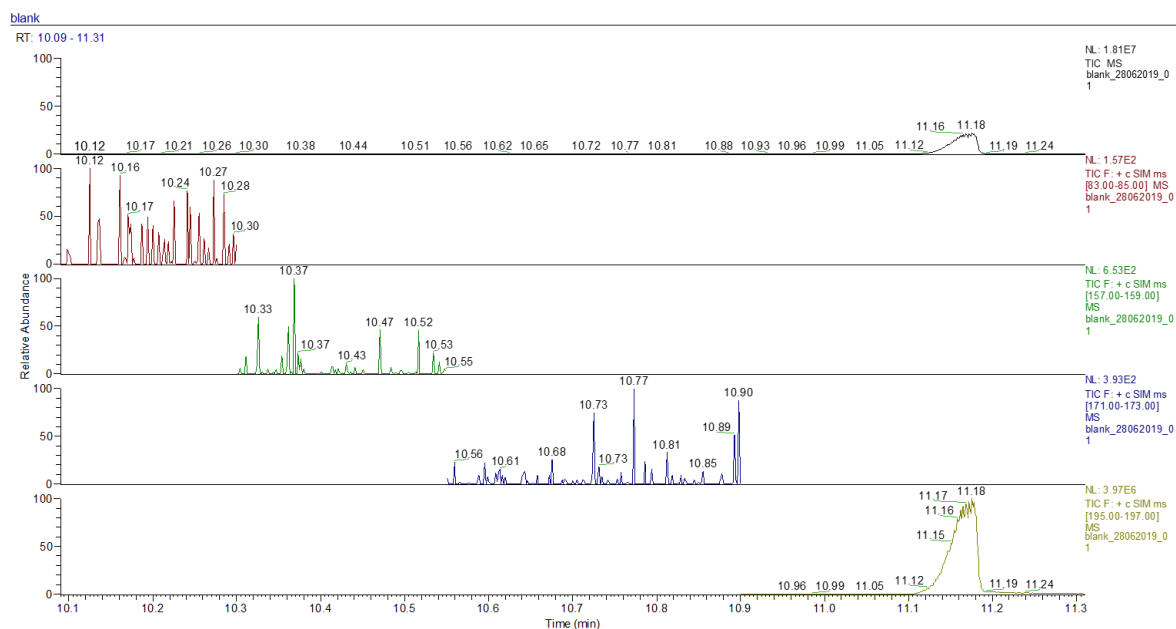


Figure S2. Blank chromatogram after addition of derivatization agent and ISTD acquired using the GC-MS methodology developed for the measurement of nicotine, DA and AP.