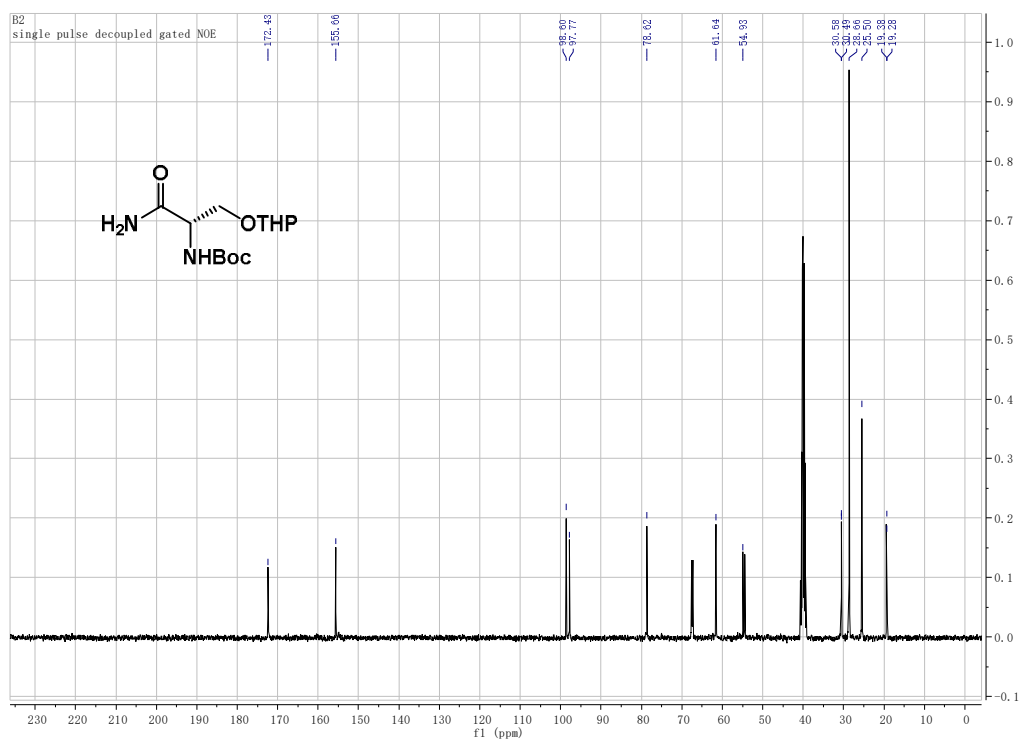
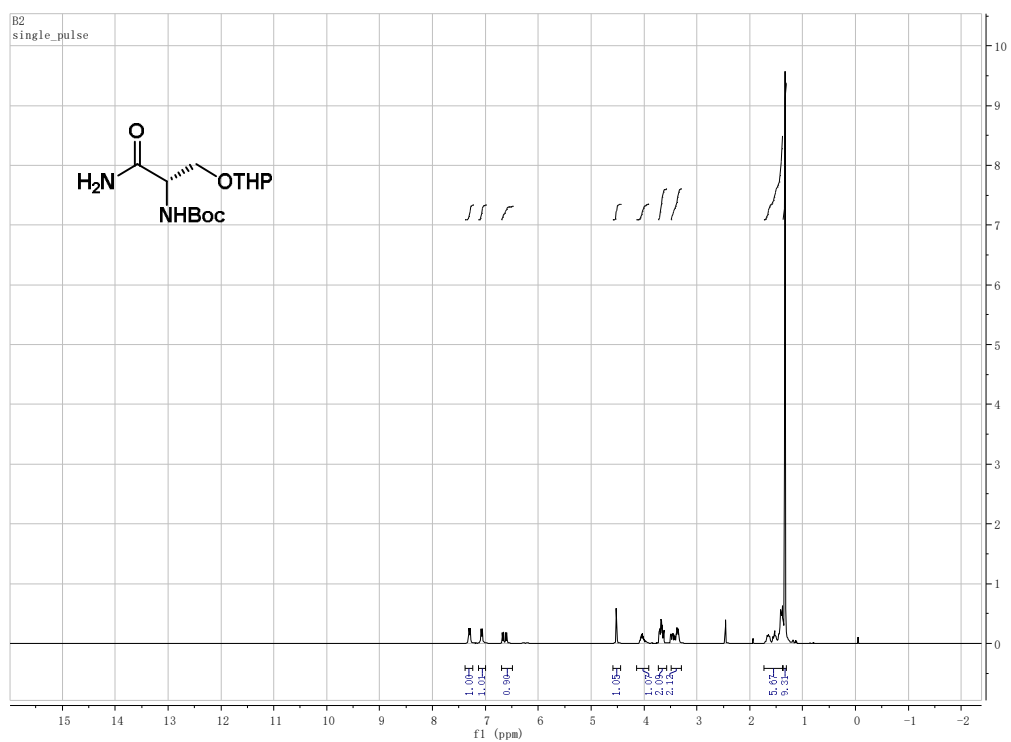
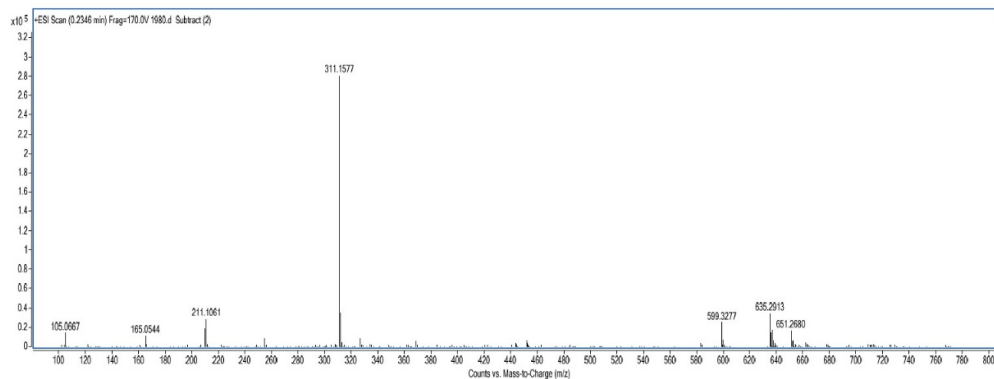

Supplementary Material

- 1 Supplementary Figure S1. ^1H -NMR spectrum of 7 in $\text{DMSO-}d_6$
- 2 Supplementary Figure S2. ^{13}C -NMR spectrum of 7 in $\text{DMSO-}d_6$
- 3 Supplementary Figure S3. HR-ESI-MS spectrum of 7
- 4 Supplementary Figure S4. ^1H -NMR spectrum of 9 in $\text{DMSO-}d_6$
- 5 Supplementary Figure S5. ^{13}C -NMR spectrum of 9 in $\text{DMSO-}d_6$
- 6 Supplementary Figure S6. HR-ESI-MS spectrum of 9
- 7 Supplementary Figure S7. ^1H -NMR spectrum of 11 in $\text{DMSO-}d_6$
- 8 Supplementary Figure S8. ^{13}C -NMR spectrum of 11 in $\text{DMSO-}d_6$
- 9 Supplementary Figure S9. HR-ESI-MS spectrum of 11
- 10 Supplementary Figure S10. ^1H -NMR spectrum of 12 in $\text{DMSO-}d_6$
- 11 Supplementary Figure S11. ^{13}C -NMR spectrum of 12 in $\text{DMSO-}d_6$
- 12 Supplementary Figure S12. HR-ESI-MS spectrum of 12
- 13 Supplementary Figure S13. ^1H -NMR spectrum of 13 in $\text{DMSO-}d_6$
- 14 Supplementary Figure S14. ^{13}C -NMR spectrum of 13 in $\text{DMSO-}d_6$
- 15 Supplementary Figure S15. HR-ESI-MS spectrum of 13
- 16 Supplementary Figure S16. ^1H -NMR spectrum of 14 in $\text{DMSO-}d_6$
- 17 Supplementary Figure S17. ^{13}C -NMR spectrum of 14 in $\text{DMSO-}d_6$
- 18 Supplementary Figure S18 HR-ESI-MS spectrum of 14
- 19 Supplementary Figure S19. ^1H -NMR spectrum of 15 in $\text{DMSO-}d_6$
- 20 Supplementary Figure S20. ^{13}C -NMR spectrum of 15 in $\text{DMSO-}d_6$
- 21 Supplementary Figure S21. HR-ESI-MS spectrum of 15
- 22 Supplementary Figure S22. ^1H -NMR spectrum of 1 in $\text{DMSO-}d_6$
- 23 Supplementary Figure S23. ^{13}C -NMR spectrum of 1 in $\text{DMSO-}d_6$
- 24 Supplementary Figure S24. HR-ESI-MS spectrum of 1
- 25 Supplementary Figure S25. ^1H - ^1H COSY spectrum of 1
- 26 Supplementary Figure S26. HSQC spectrum of 1
- 27 Supplementary Figure S27. HMBC spectrum of 1

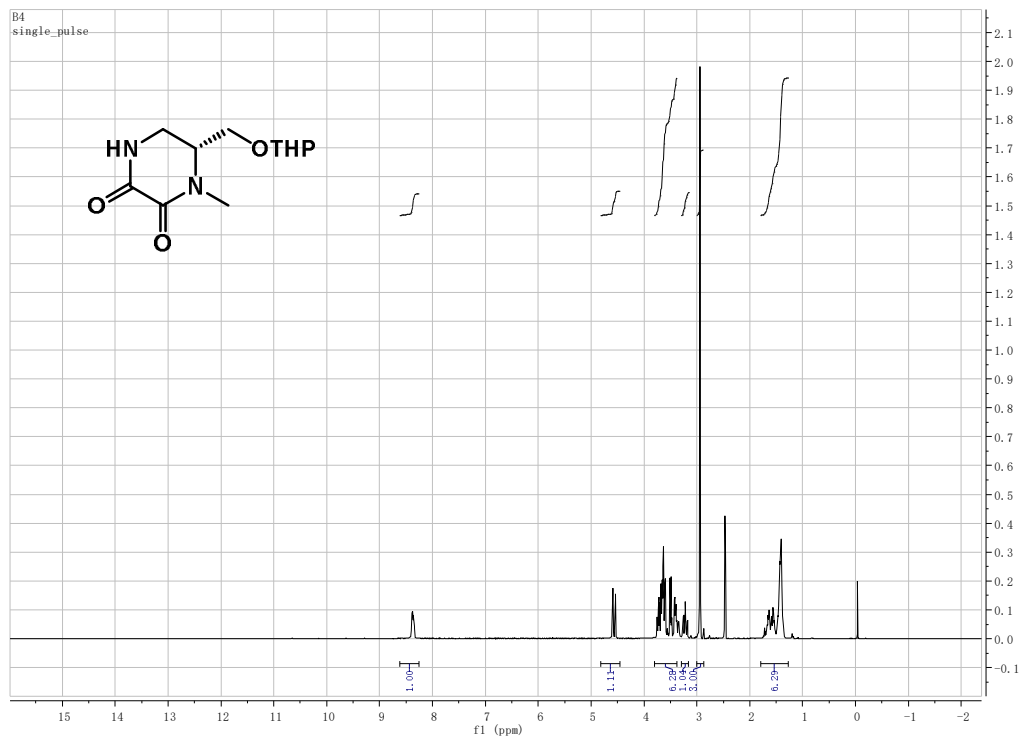


Qualitative Analysis Report

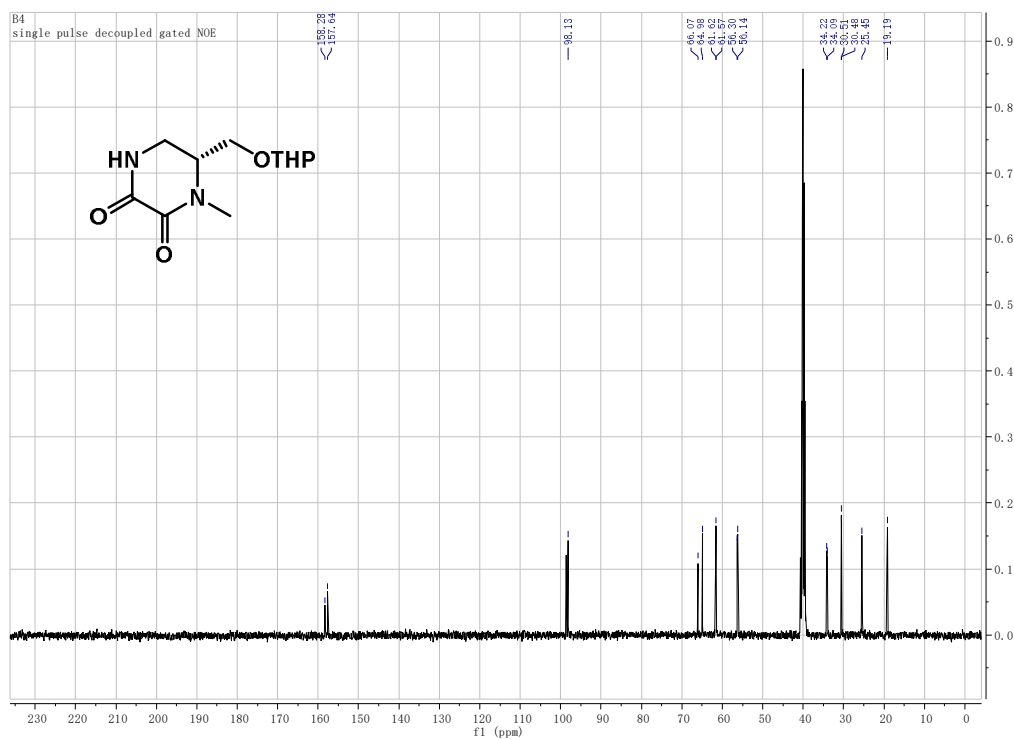
Data Filename	1980.d	Sample Name	L-288
Instrument Name	TOF G6230A	Acquired Time	2023-04-06
Acq Method	YCLM	Acquired SW	6200 series TOF/6500 series
IRM Calibration Status	Success		
User Chromatograms			



Supplementary Figure S3 HR-ESI-MS spectrum of 7

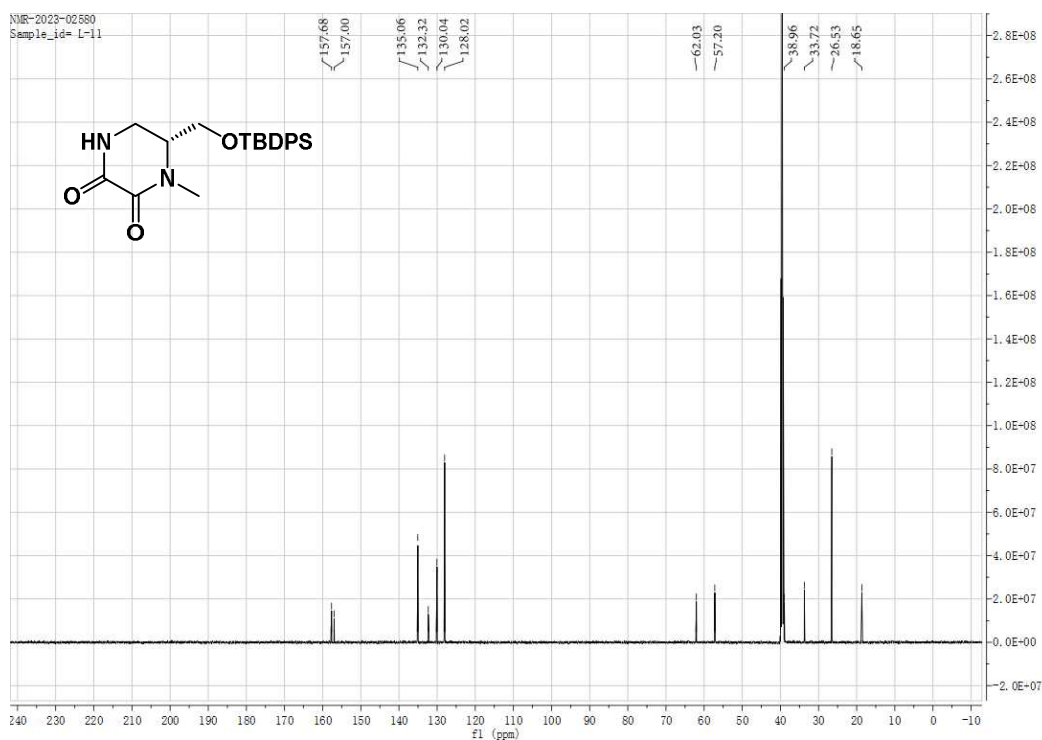


Supplementary Figure S4 ¹H-NMR spectrum of 9



Supplementary Figure S5 ^{13}C -NMR spectrum of **9**

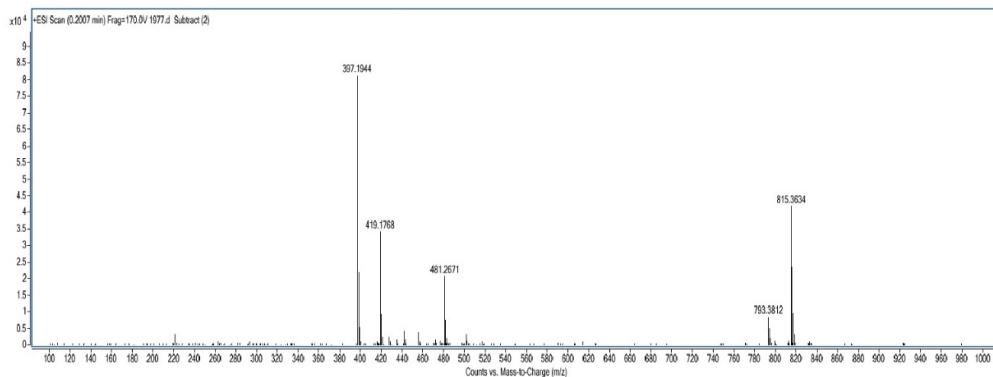
Supplementary Figure S6 HR-ESI-MS spectrum of **9**



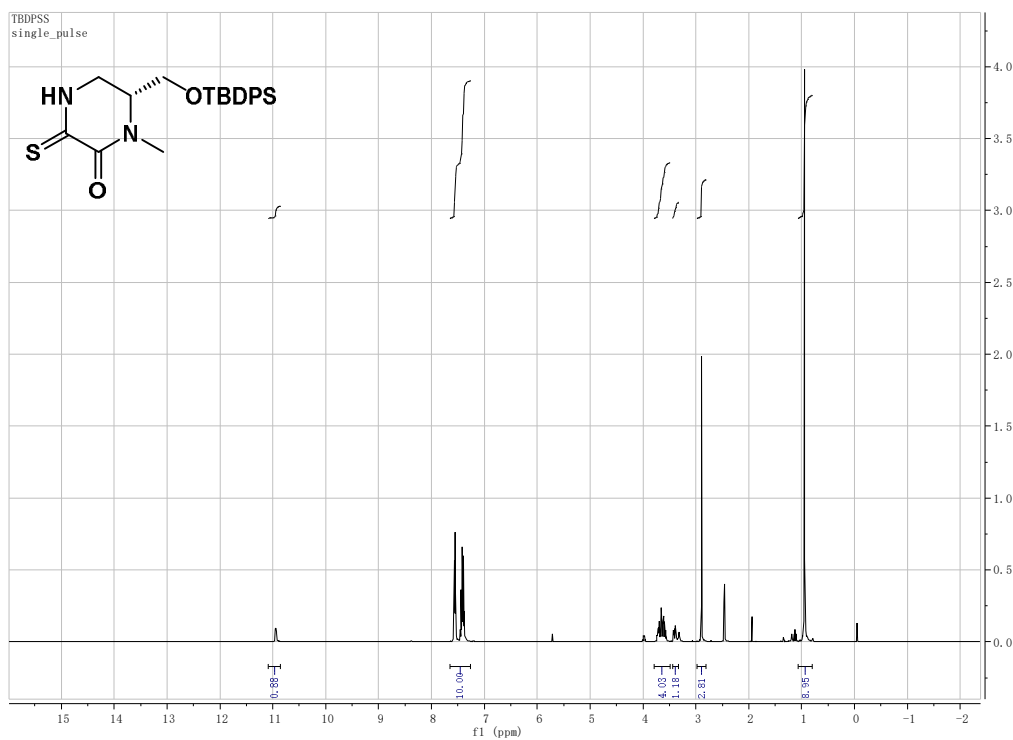
Supplementary Figure S8 ^{13}C -NMR spectrum of 11

Qualitative Analysis Report

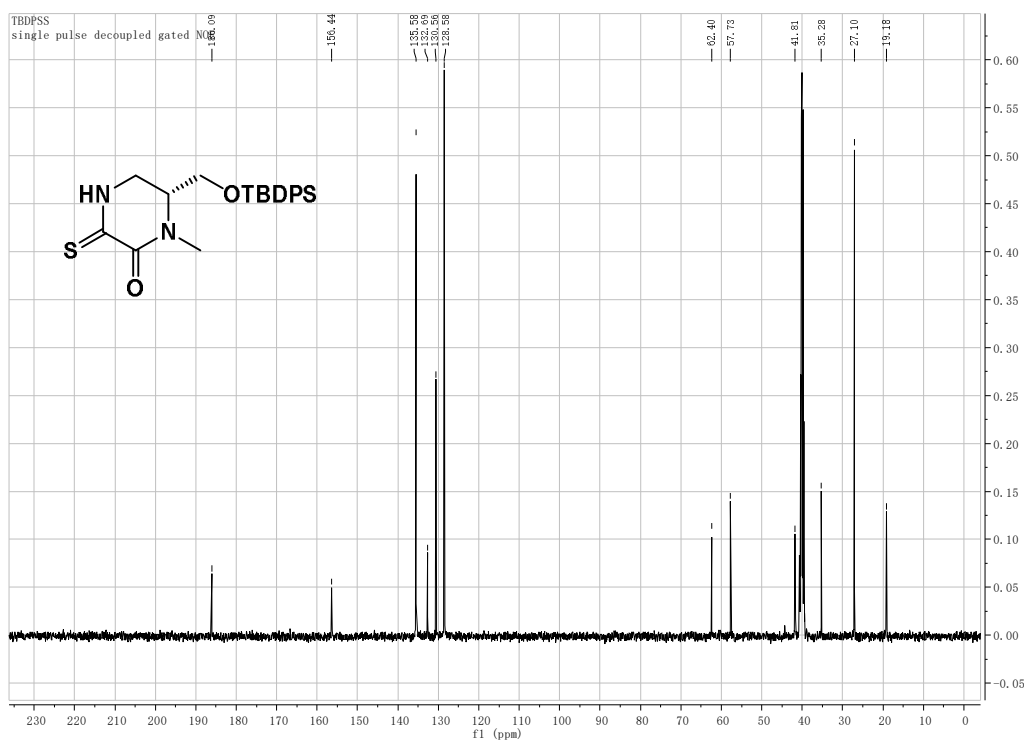
Data Filename	1977.d	Sample Name	L-396
Instrument Name	TOF G6230A	Acquired Time	2023-04-06
Acq Method	YCLM	Acquired SW	6200 series TOF/6500 series
IRM Calibration Status	Success		
User Chromatograms			



Supplementary Figure S9 HR-ESI-MS spectrum of 11

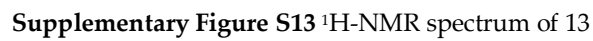
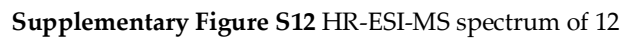


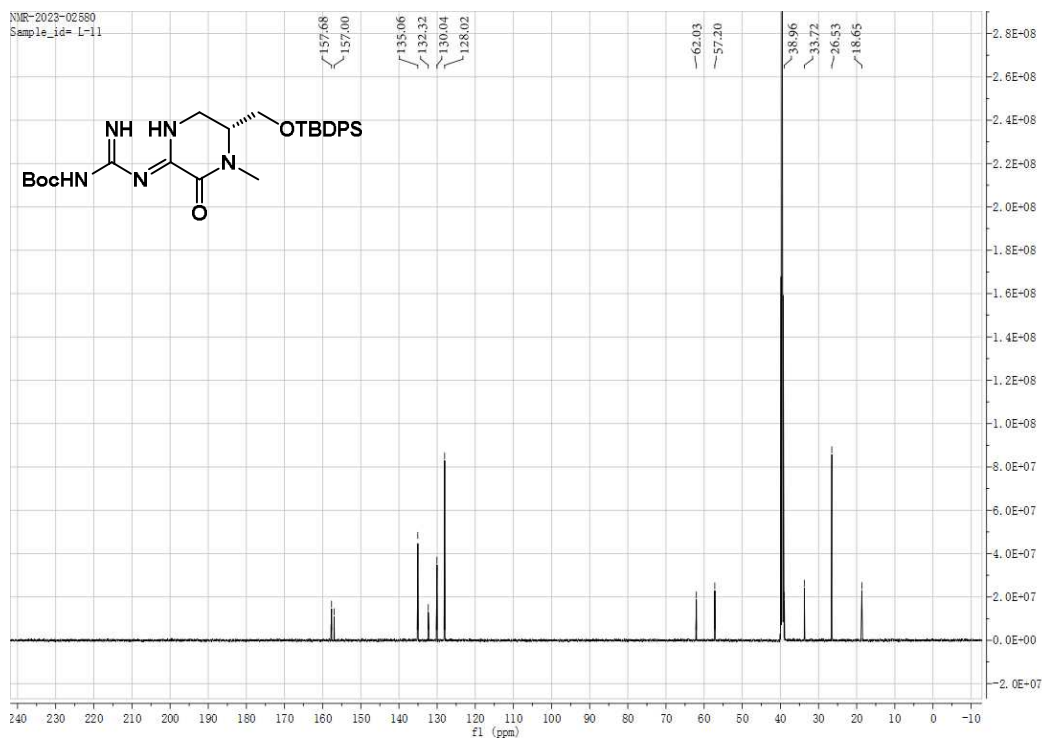
Supplementary Figure S10 ^1H -NMR spectrum of 12



Supplementary Figure S11 ^{13}C -NMR spectrum of 12

Data Filename	1978.d	Sample Name	L-412
Instrument Name	TOF G6230A	Acquired Time	2023-04-06
Acq Method	YCL.M	Acquired SW	6200 series TOF/6500 series
IRM Calibration Status	Success		
User Chromatograms			

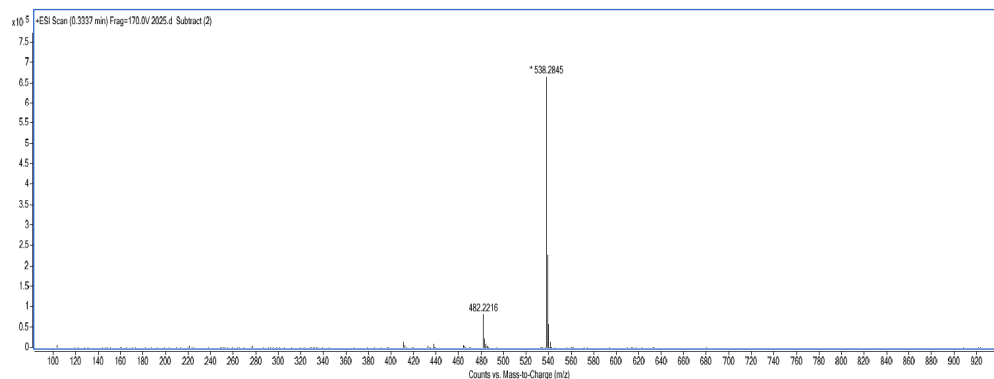




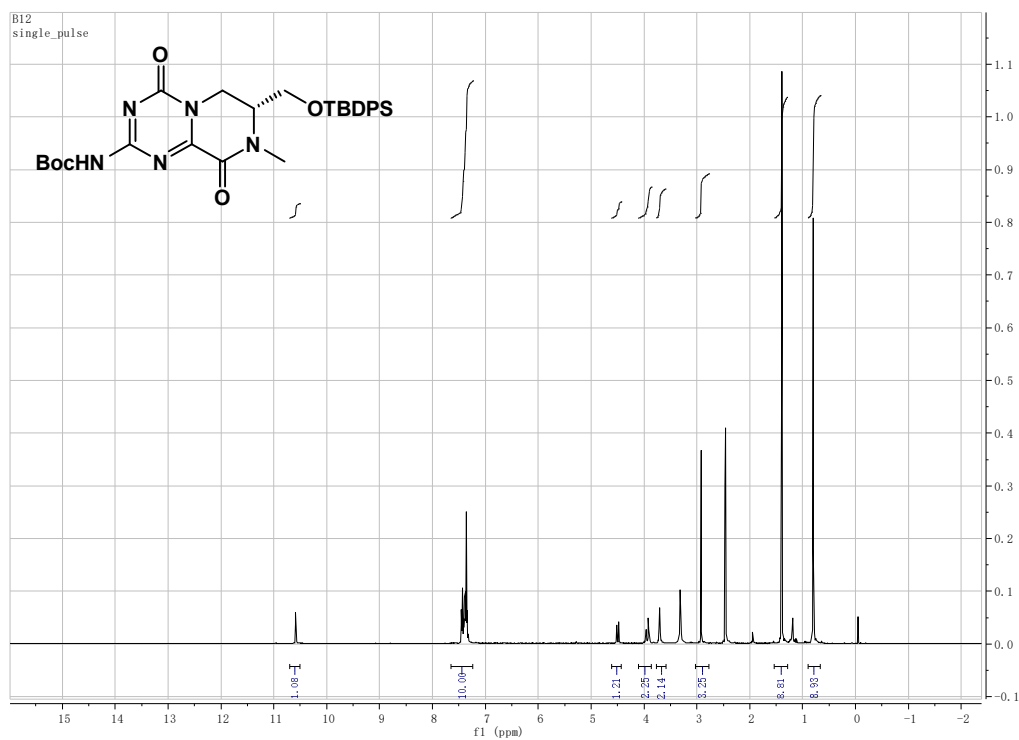
Supplementary Figure S14 ^{13}C -NMR spectrum of 13

Qualitative Analysis Report

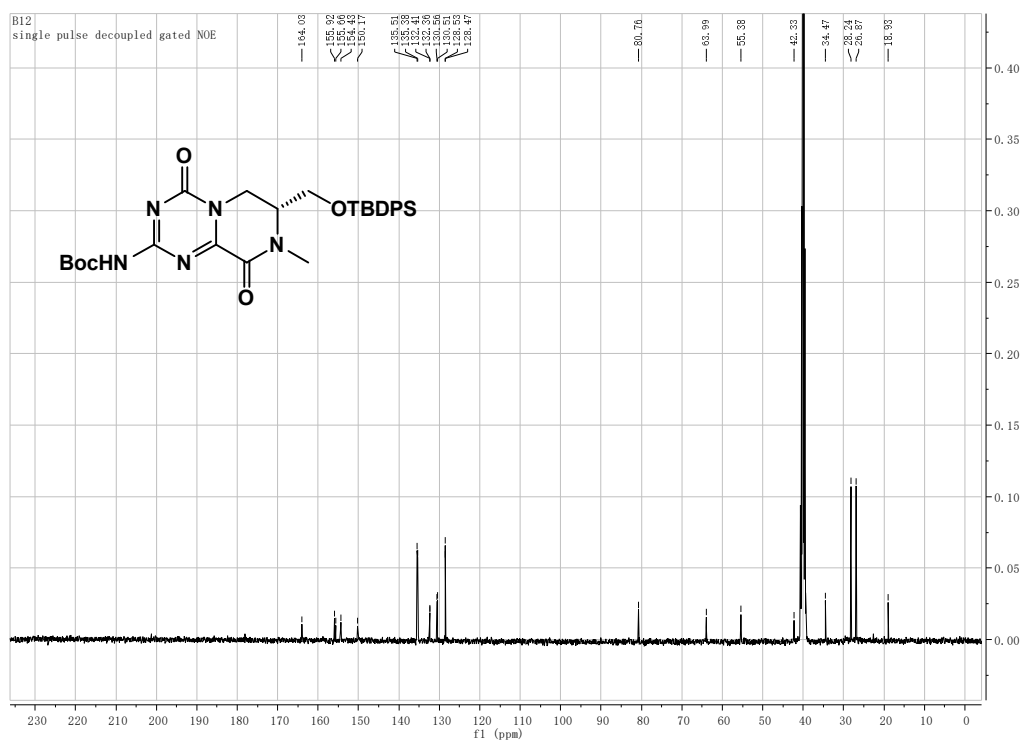
Data Filename	2025.d	Sample Name	L-537
Instrument Name	TOF G6230A	Acquired Time	2023-04-07
Acq Method	YCLM	Acquired SW	6200 series TOF/6500 series
IRM Calibration Status	Success		
User Chromatograms			



Supplementary Figure S15 HR-ESI-MS spectrum of 13



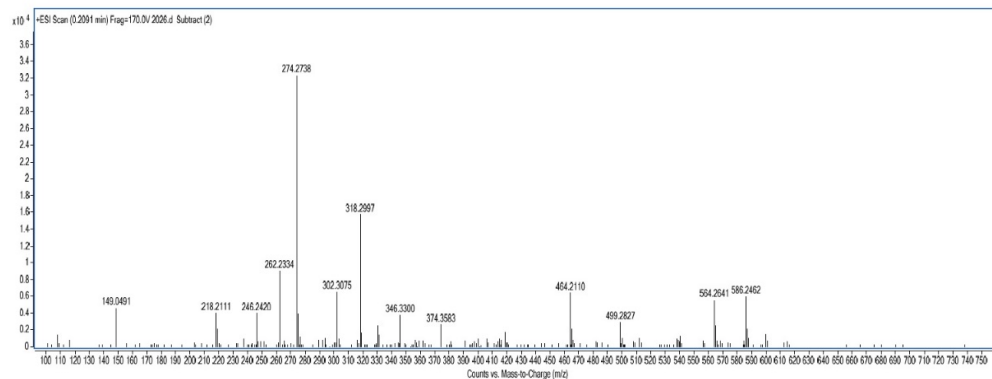
Supplementary Figure S16 ^1H -NMR spectrum of 14



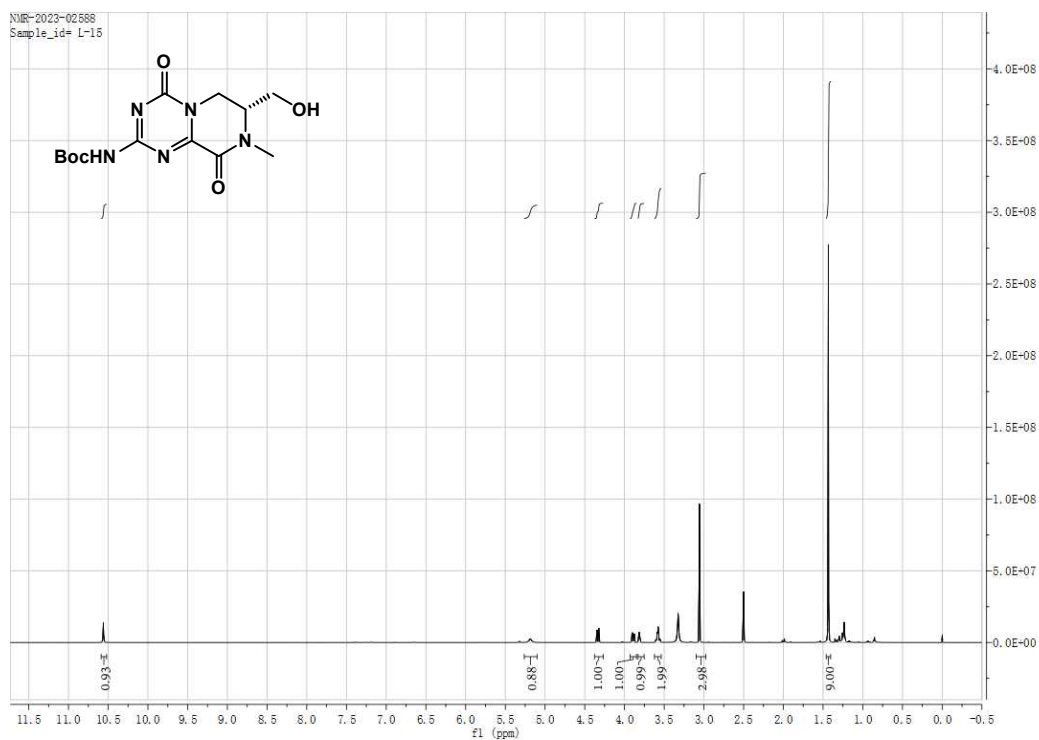
Supplementary Figure S17 ^{13}C -NMR spectrum of 14

Qualitative Analysis Report

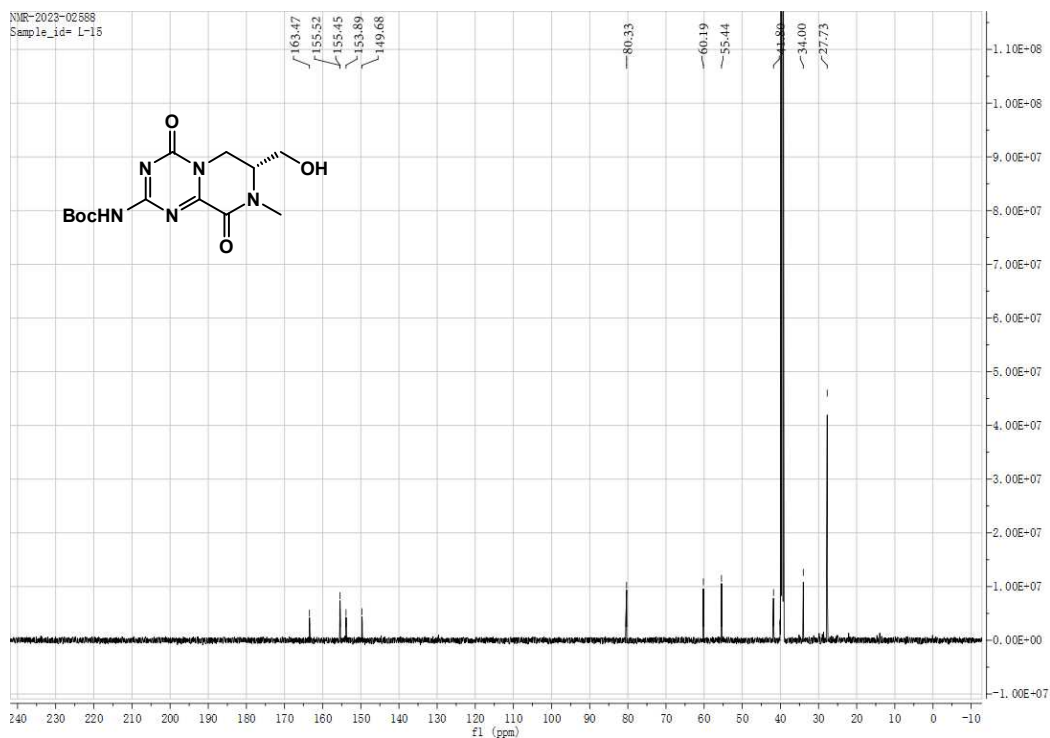
Data Filename	2026.d	Sample Name	L-563
Instrument Name	TOF G6230A	Acquired Time	2023-04-07
Acq Method	YCLM	Acquired SW	6200 series TOF/6500 series
IRM Calibration Status	Success		
User Chromatograms			



Supplementary Figure S18 HR-ESI-MS spectrum of 14



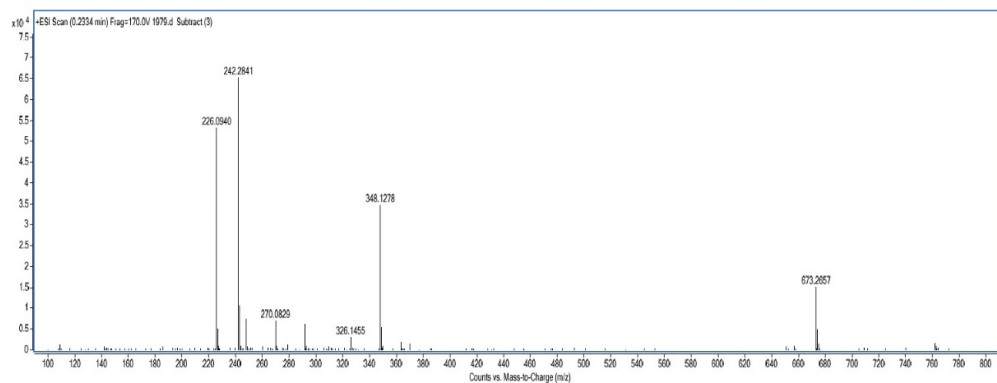
Supplementary Figure S19 ¹H-NMR spectrum of 15



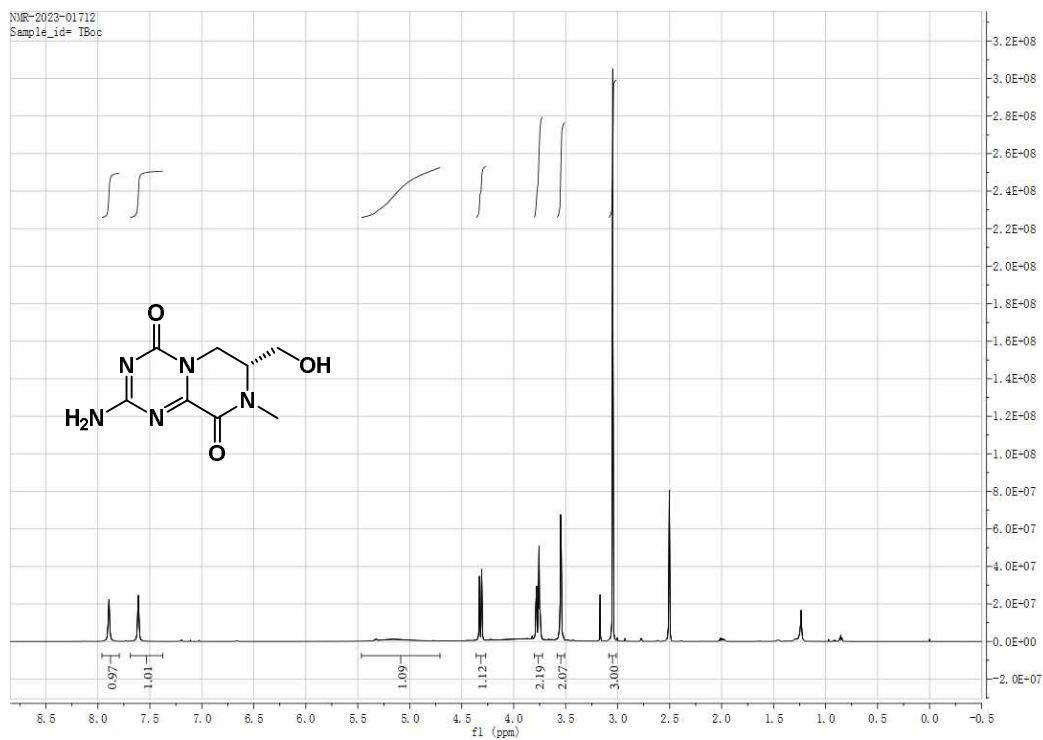
Supplementary Figure S20 ^{13}C -NMR spectrum of 15

Qualitative Analysis Report

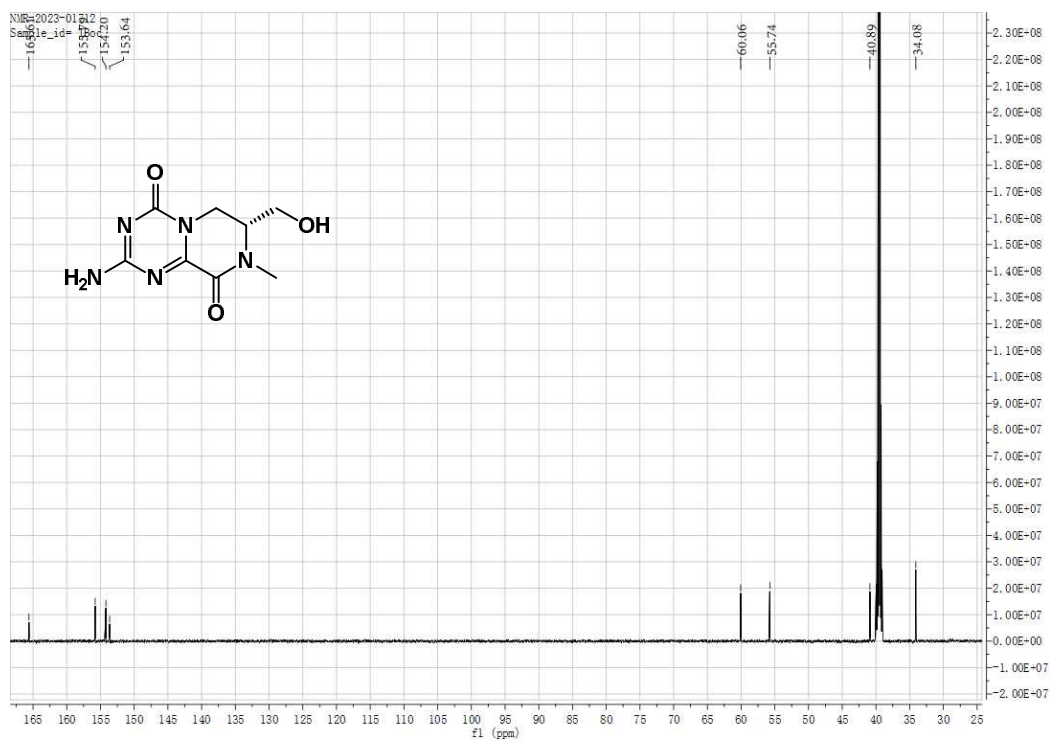
Data Filename	1979.d	Sample Name	L-325
Instrument Name	TOF G6230A	Acquired Time	2023-04-06
Acq Method	YCLM	Acquired SW	6200 series TOF/6500 series
IRM Calibration Status	Success		
User Chromatograms			



Supplementary Figure S21 HR-ESI-MS spectrum of 15



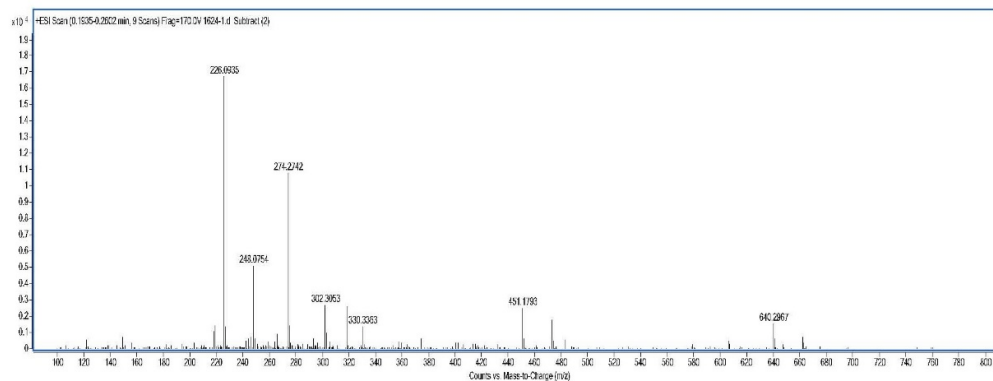
Supplementary Figure S22 ¹H-NMR spectrum of 1



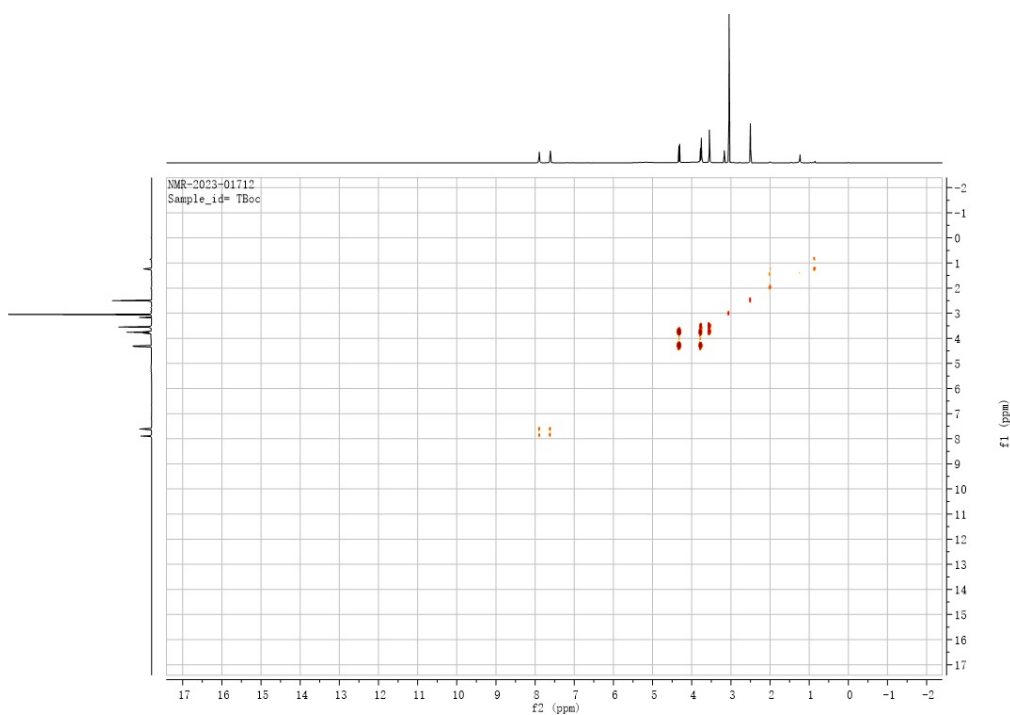
Supplementary Figure S23 ¹³C-NMR spectrum of 1

Qualitative Analysis Report

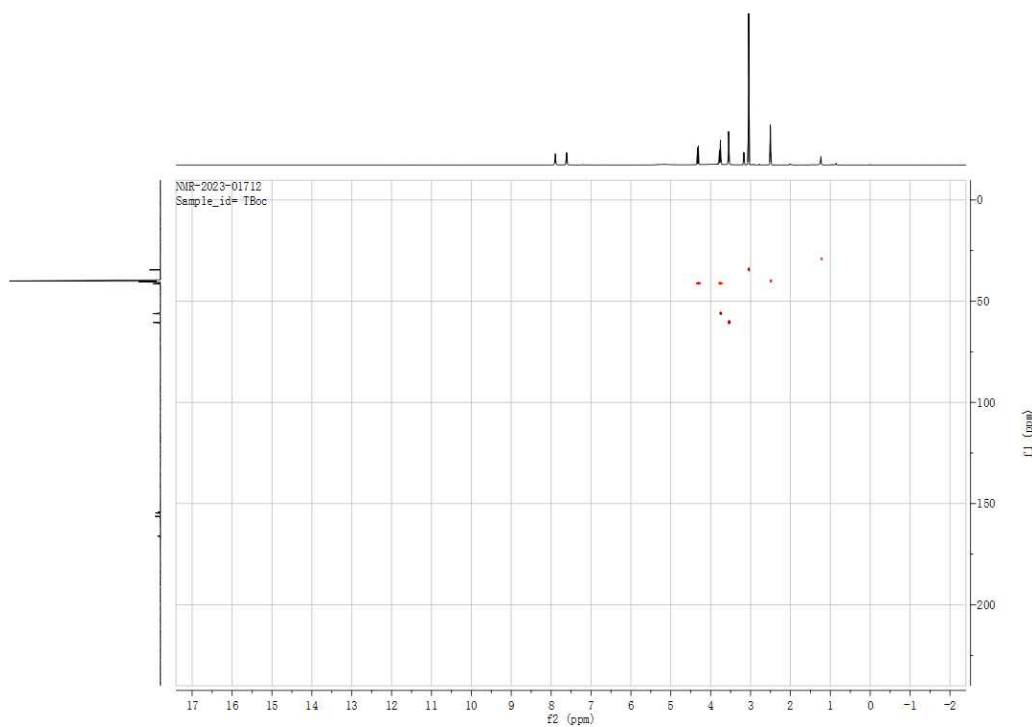
Data Filename	1624.d	Sample Name	TBoc
Instrument Name	TOF G6230A	Acquired Time	2023-03-23
Acq Method	YCLM	Acquired SW	6200 series TOF/6500 series
IRM Calibration Status	Success		
User Chromatograms			



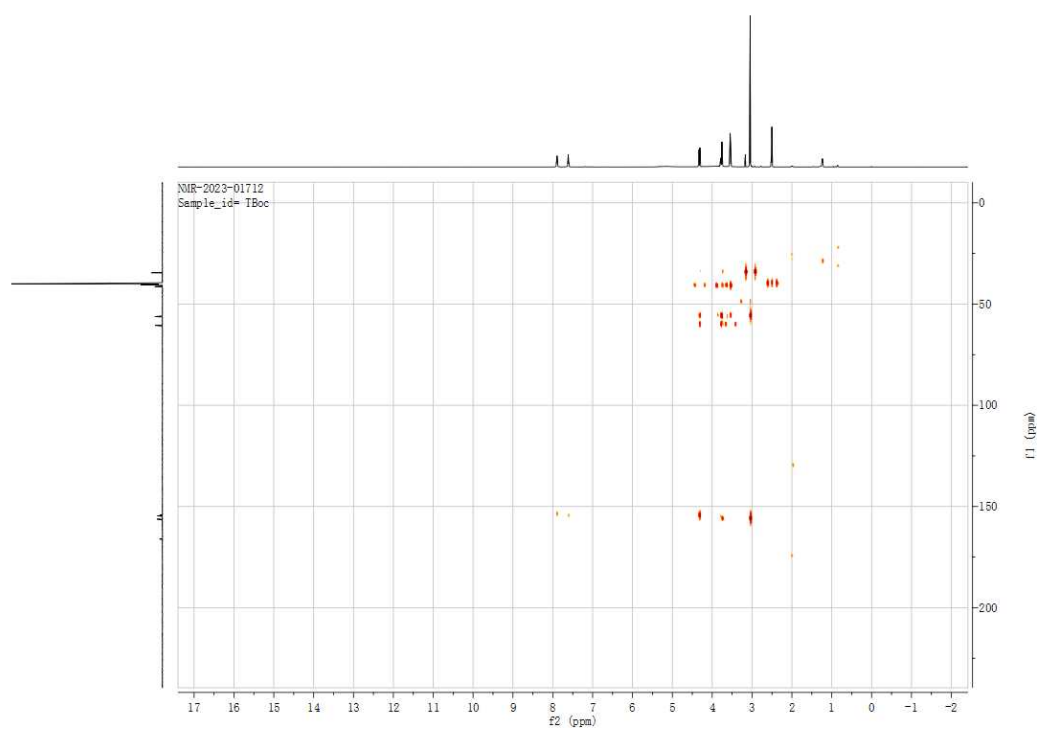
Supplementary Figure S24 HR-ESI-MS spectrum of 1



Supplementary Figure S25 ¹H-¹H COSY spectrum of 1



Supplementary Figure S26 HSQC spectrum of 1



Supplementary Figure S27 HMBC spectrum of 1

