

Figure S1-A: GC-MS Chromatogram of *O. Vulgare ssp. hirtum* essential oil

Figure S1-B: GC-MS Chromatogram of *Rosmarinus officinalis* essential oil

Figure S1-C: GC-MS Chromatogram of *Salvia triloba* essential oil

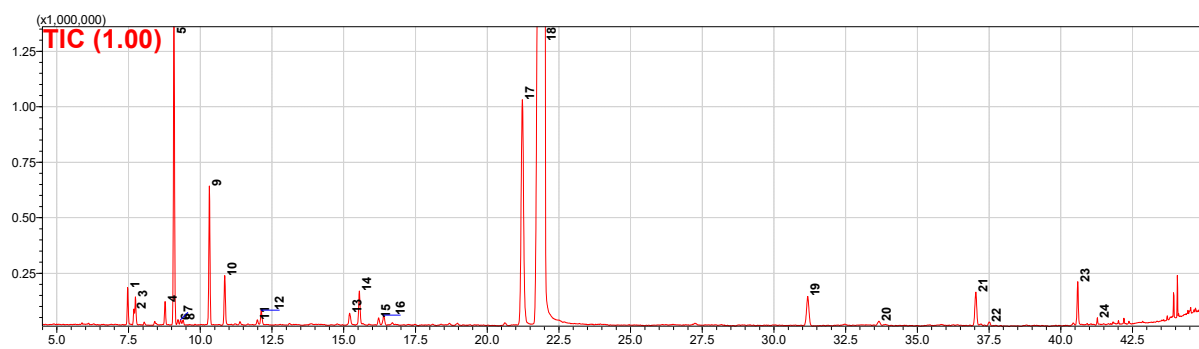


Figure S1-A. Chromatogram of *O. Vulgare ssp. hirtum* essential oil

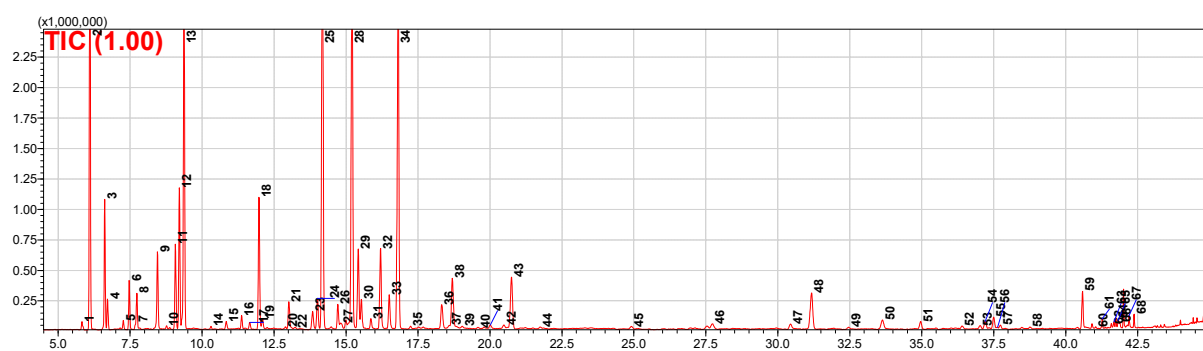


Figure S1-B: GC-MS Chromatogram of *Rosmarinus officinalis* essential oil



Figure S1-C: GC-MS Chromatogram of *Salvia triloba* essential oil