

Supplement materials

Effect of Deashing Treatment on Ash Fusion Characteristics of Biochar from Bamboo Shoot Shells

Hao Ren ^{1,2}, Qi Gao ^{1,2}, Liangmeng Ni ^{1,2}, Mengfu Su ^{1,2}, Shaowen Rong ^{1,2}, Shushu Liu ^{1,2}, Yanhang Zhong ^{1,2} and Zhijia Liu ^{1,2,*}

¹ International Centre for Bamboo and Rattan, Beijing 100102, China;
hao991105@163.com (H.R.); gaoqi677@163.com (Q.G.); 17346610822@163.com (L.N.); smf13850202763@163.com (M.S.);
bramble_001@163.com (S.R.); ls2535075602@163.com (S.L.);
zyh1842675310@gmail.com (Y.Z.)

² Key Laboratory of National Forestry and Grassland Administration/Beijing for Bamboo & Rattan Science and Technology, Beijing 100102, China

* Correspondence: liuzj@icbr.ac.cn

Table S1 BBSS mass difference with different deashing treatments

	Mass before deashing	Mass after deashing	Mass difference
	(g)	(g)	(g)
BBSS-WA	10	8.857	1.143
BBSS-AW	10	8.983	1.017

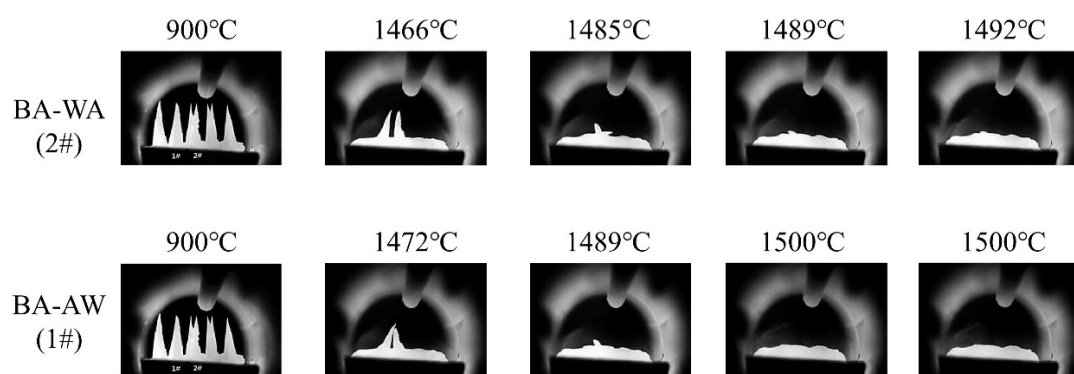


Figure S1. Ash fusion temperature of BA-WA and BA-AW.

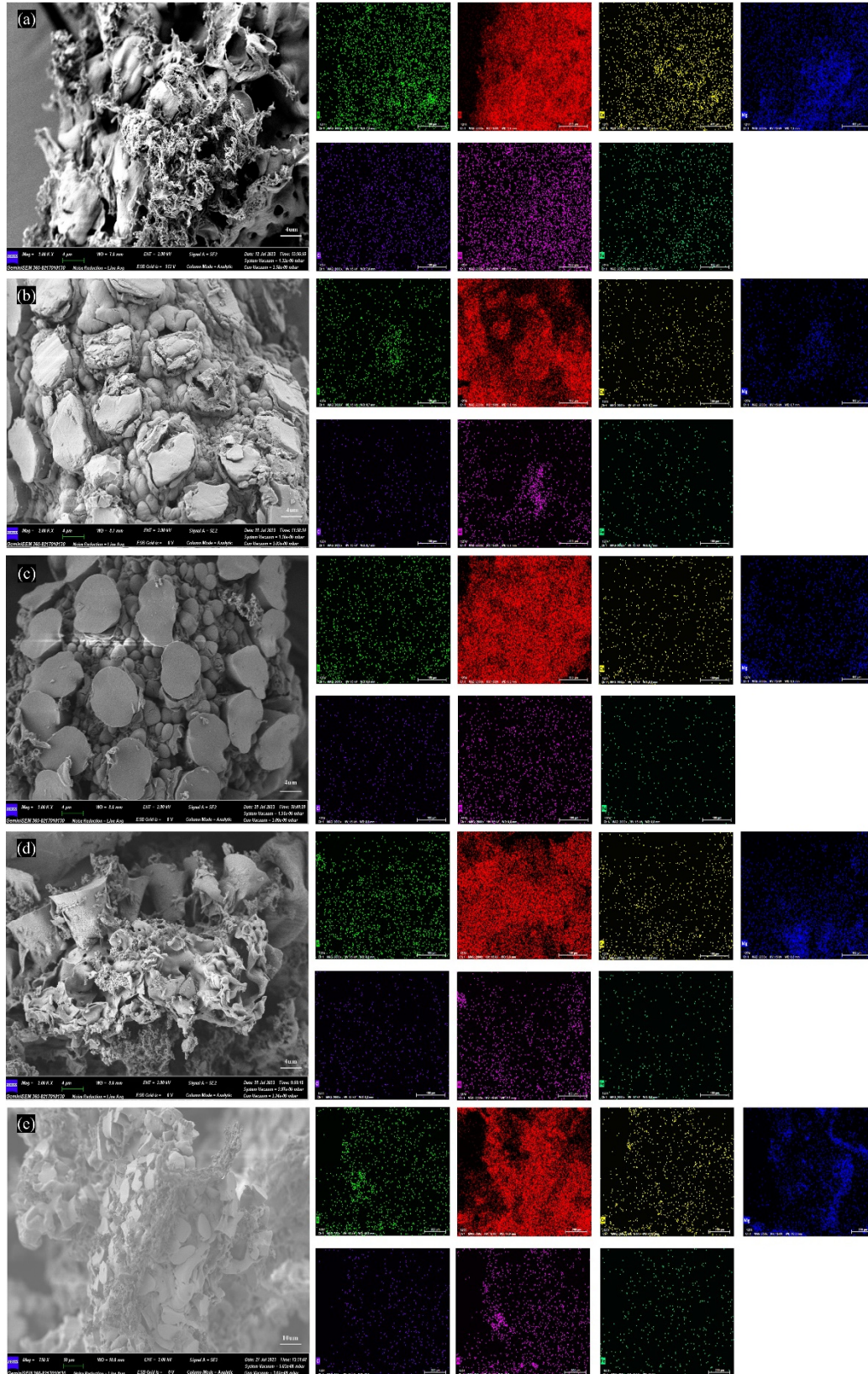


Figure S2. SEM-EDS images of BA-WA at different temperatures.

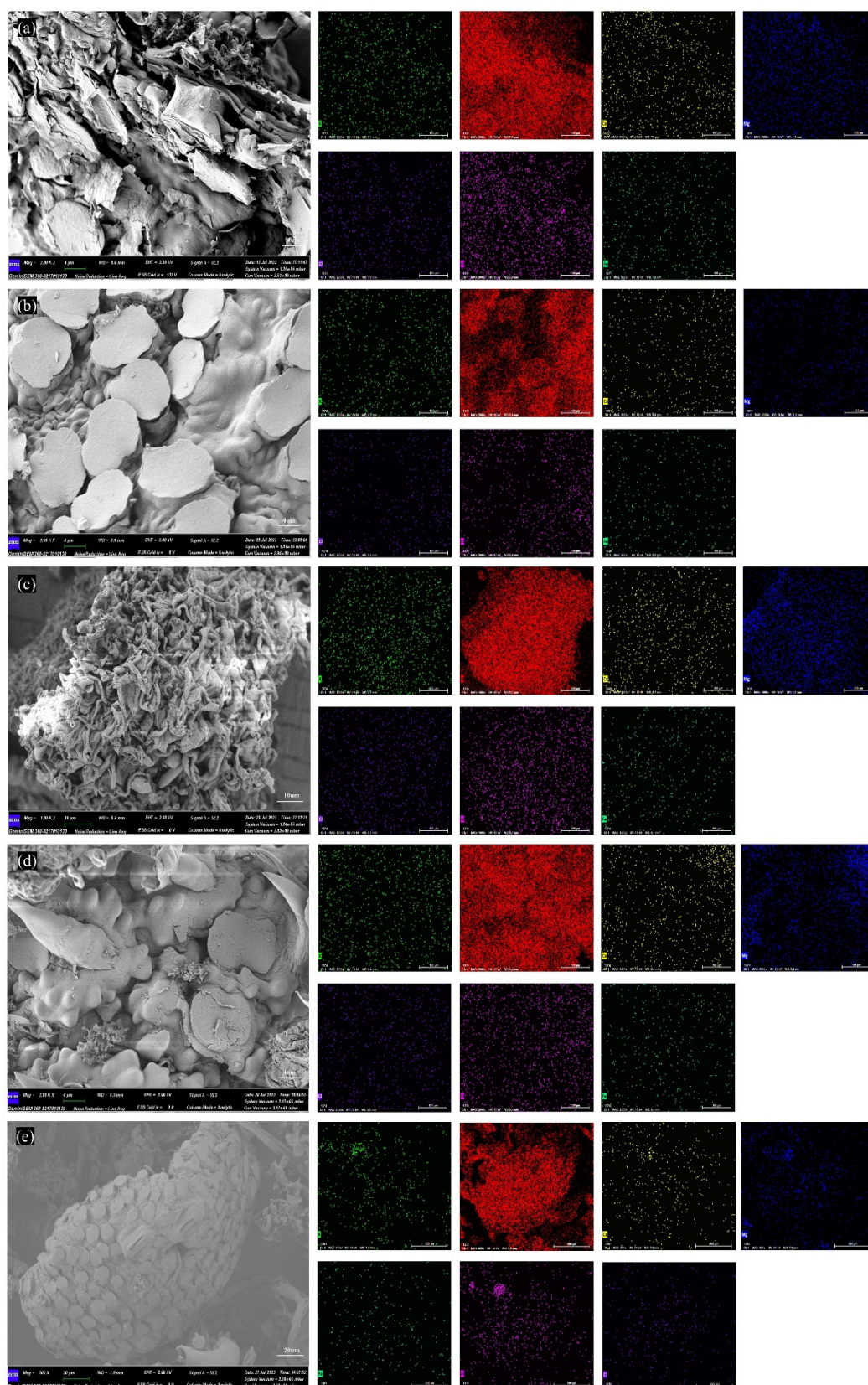


Figure S3. SEM-EDS images of BA-AW at different temperatures.