

Supplementary Information

Figure S1. LDH measurement after osmotic stress. Values are given as the mean \pm SD (error bars) of one representative out of at least three biologically independent experiments. Nim = nimodipine.

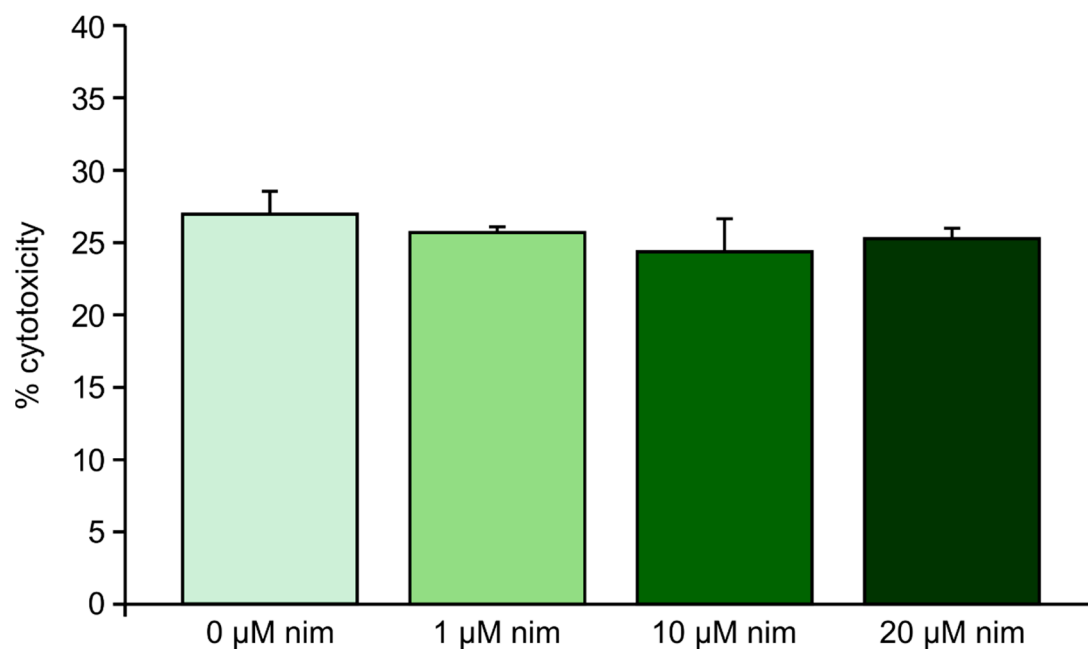


Figure S2. (a) Live/dead staining with FDA and PI. enlargement of microscopy pictures (control, EtOH stress) –nim = w/o nimodipine; +nim = 20 μ M nimodipine; control = non-stressed cells; EtOH = 2% ethanol; (b) Live/dead staining with FDA and PI. enlargement of microscopy pictures (control, EtOH stress) –nim = w/o nimodipine; +nim = 20 μ M nimodipine; heat = 6 h, 42 $^{\circ}$ C; mech = shaking with steel beads; and (c) Live/dead staining with FDA and PI enlargement of microscopy pictures (control, EtOH stress) –nim = w/o nimodipine; +nim = 20 μ M nimodipine; NaCl = 150 mM NaCl; scale bar = 200 μ m.

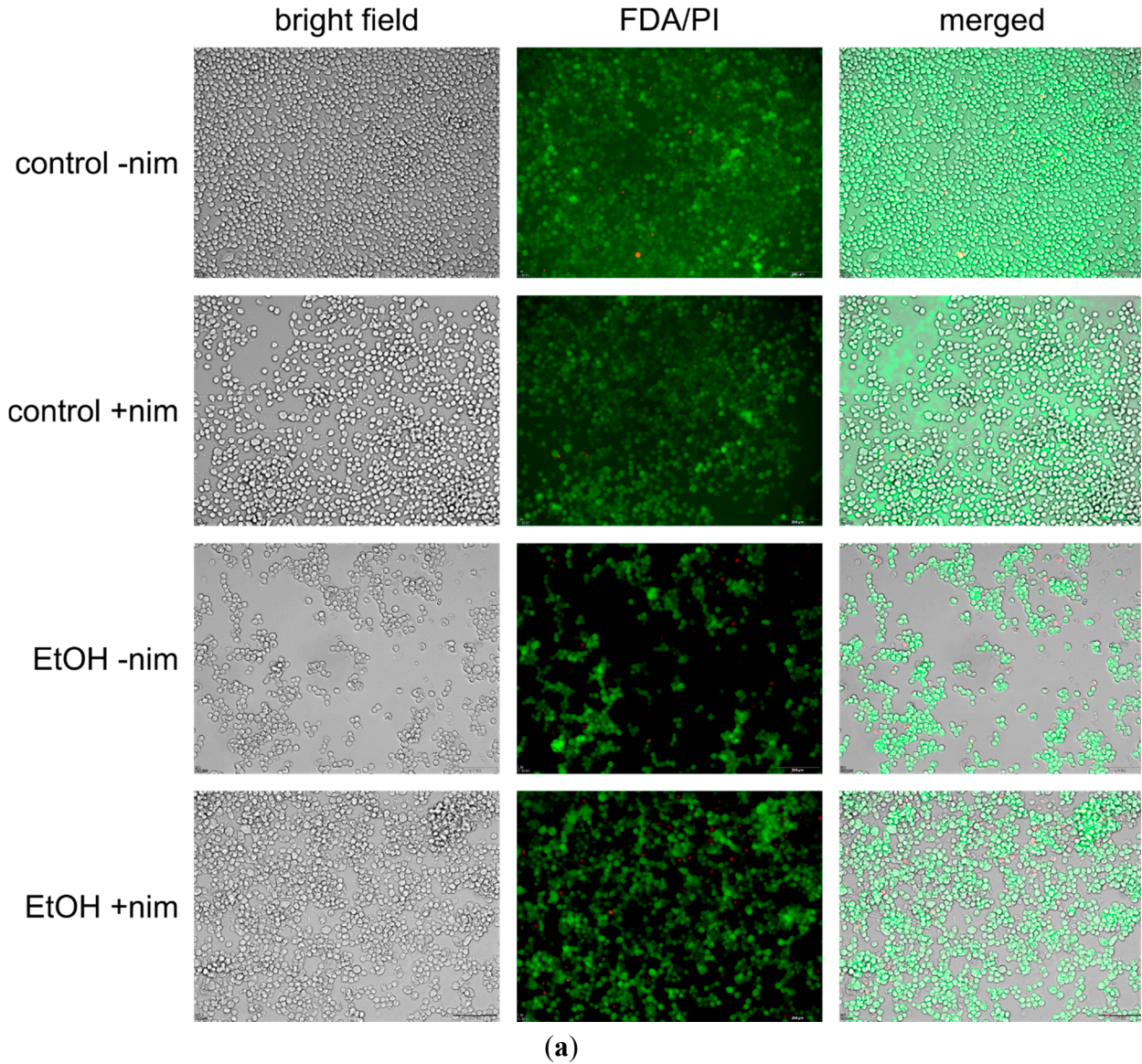


Figure S2. Cont.