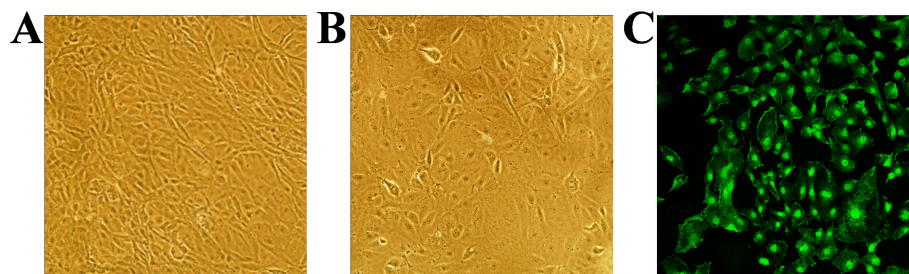


## Supplementary Information

**Figure S1.** Primary rat pulmonary microvascular endothelial cell (RPMVEC) (A) and sub-cultured cells (B) were observed by an inverted microscope (magnification 10×); (C) RPMVEC were identified by the expression of CD31 (magnification 20×).



**Figure S2.** Specific siRNA against Semaphorin 7A (SEMA7A) or negative scrambled control (Scr siRNA).  $n = 8$ , \*\*\*  $p < 0.001$  versus 0  $\mu\text{g/mL}$  SEMA7A siRNA group.

