

Supplementary Information

Figure S1. * For this plot phototoxicity was corrected for uptake (fluorimetry, rel. FI, a.u.). All other plots in this supplement show uncorrected viability. In this case (miR-20a*), correlations with miR expression are significant for all three treatments, if uptake-corrected phototoxicity is taken into account (see also Figure 2). * $p < 0.05$, ** $p < 0.01$.

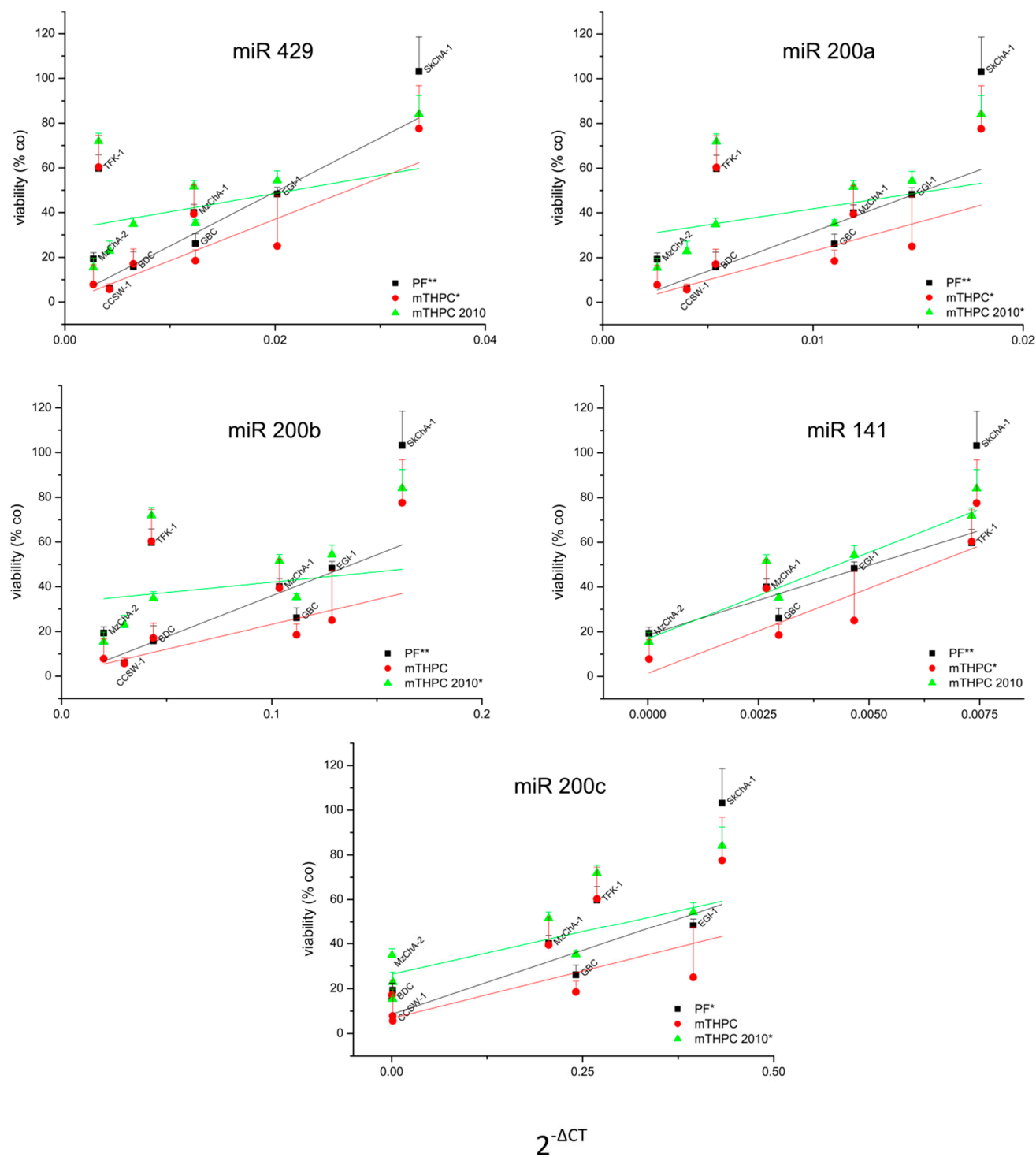


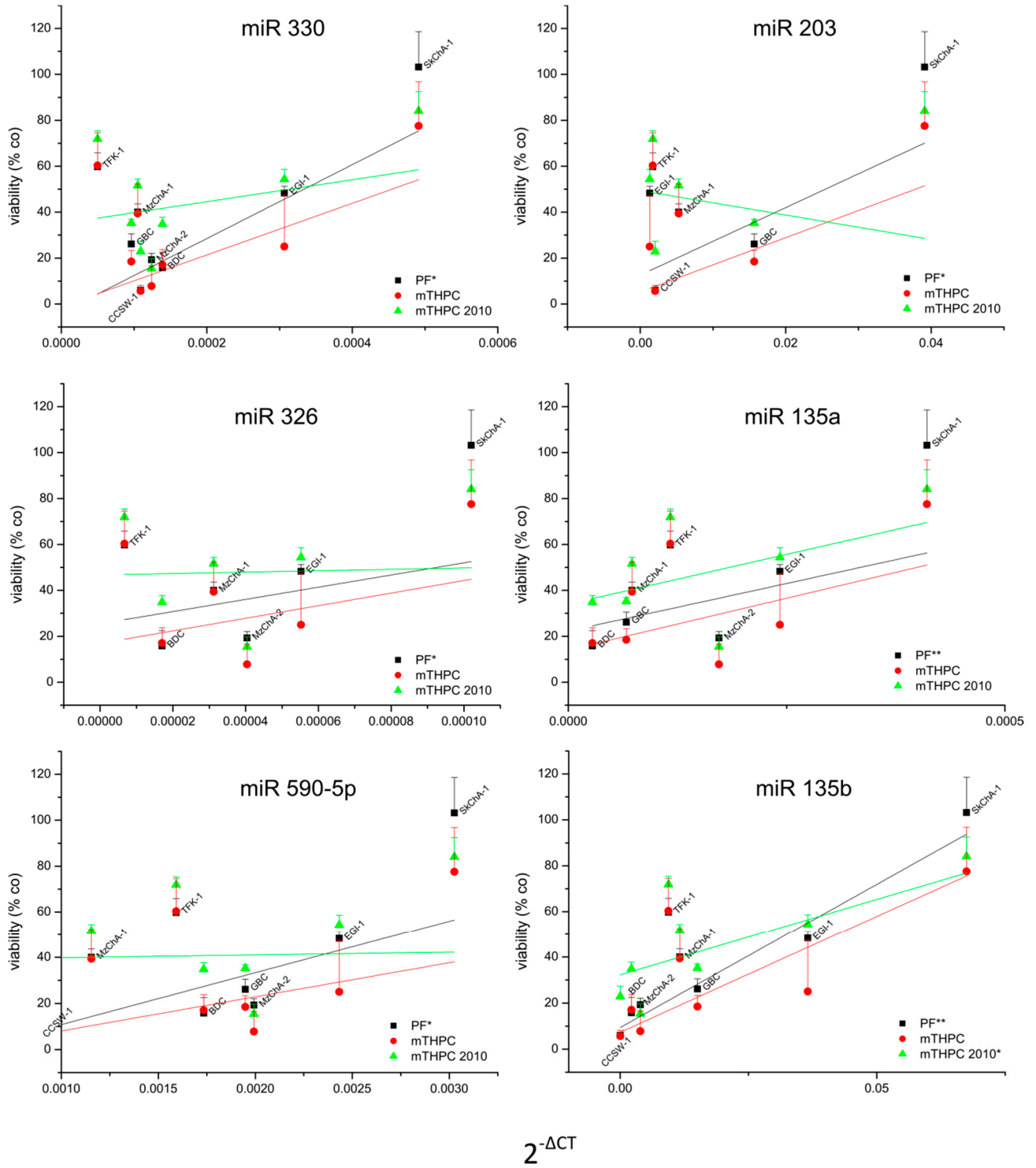
Figure S1. *Cont.*

Figure S1. Cont.

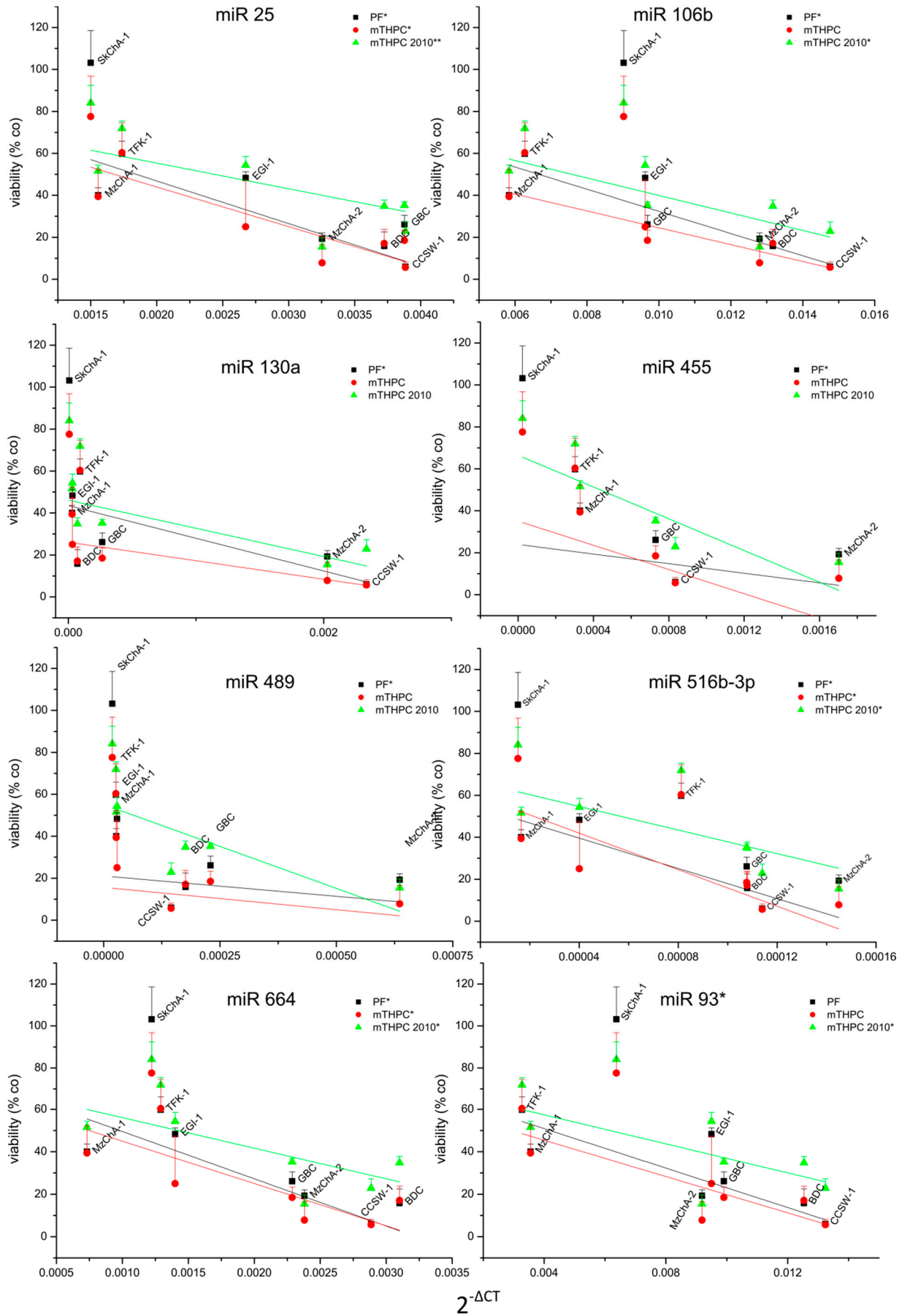


Figure S1. *Cont.*