

Supplementary Materials: Application of Green Tea Catechin for Inducing the Osteogenic Differentiation of Human Dedifferentiated Fat Cells *in Vitro*

Koji Kaida, Yoshitomo Honda, Yoshiya Hashimoto, Masahiro Tanaka and Shunsuke Baba

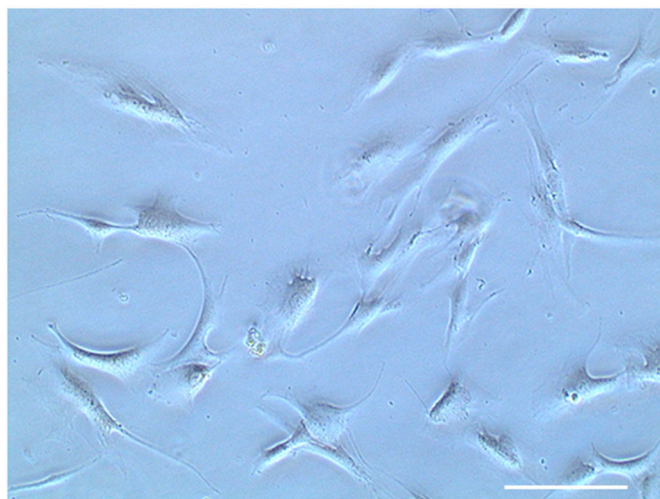


Figure S1. Representative phase contrast image of human dedifferentiated fat (DEAT) cells. Bar = 50 μ m.