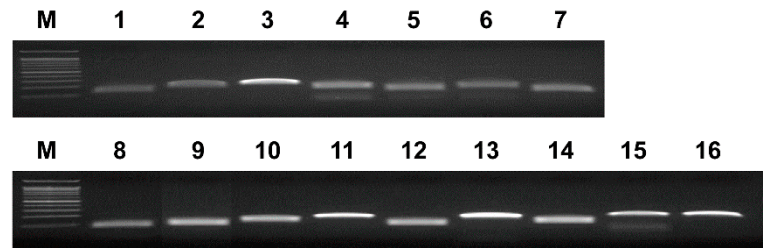


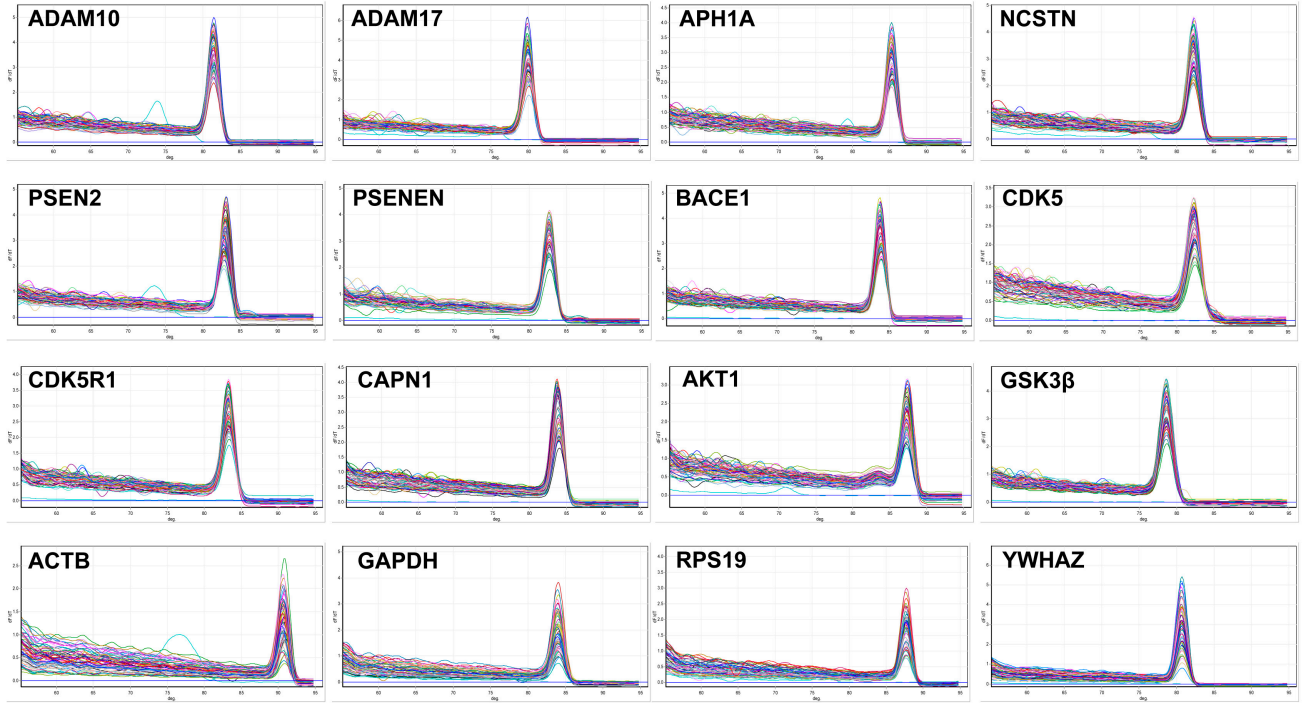
## Supplementary Information



**Figure S1.** RT-PCR amplification of the 16 genes. M: marker, 1: *ADAM10*, 2: *ADAM17*, 3: *BACE1*, 4: *PSEN2*, 5: *NCSTN*, 6: *APH1A*, 7: *PSENEN*, 8: *CDK5*, 9: *CDK5R1*, 10: *CAPN1*, 11: *AKT1*, 12: *GSK3β*, 13: *ACTB*, 14: *GAPDH*, 15: *RPS19*, 16: *YWHAZ*.



**Figure S2.** Nucleotide sequences of APP pathway-related genes, tau phosphorylation-related genes and reference genes from the cynomolgus monkey.



**Figure S3.** Melting curve analyses of APP pathway-related genes, tau phosphorylation-related genes, and reference genes in all samples.