

Supplementary Materials: Genome-Wide Characterization and Expression Analysis of the Germin-Like Protein Family in Rice and Arabidopsis

Lu Li, Xihui Xu, Chen Chen and Zhenguo Shen

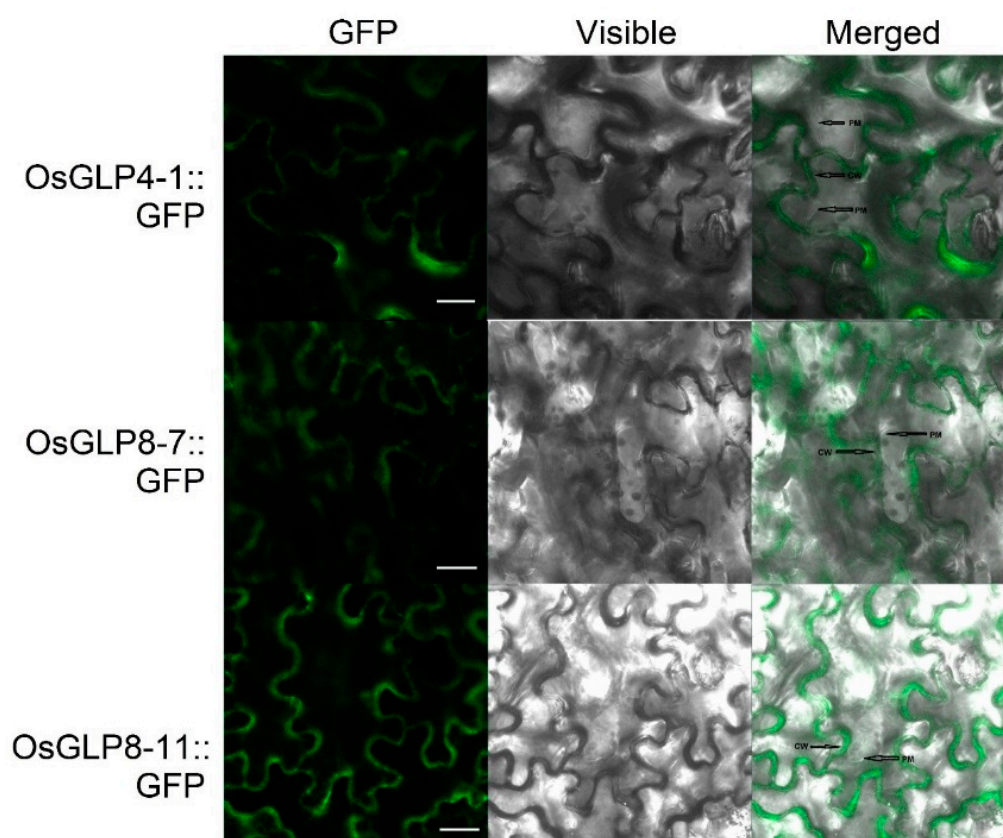


Figure S1. Plasmolysis of *Nicotiana benthamiana* cells expressing OsGLP4-1::GFP, OsGLP8-7::GFP, and OsGLP8-11::GFP. After plasmolysis, GFP fluorescence was detected in the cell wall. All images are from confocal scans performed with a confocal laser scanning microscope. Arrowheads point to the plasma membrane (PM) and cell walls (CW); Scale bar = 25 μ m.