

Supplementary Materials: Alcohol Consumption during Pregnancy: Analysis of Two Direct Metabolites of Ethanol in Meconium

Arantza Sanvisens, Neus Robert, José María Hernández, Paola Zuluaga, Magí Farré, Wifredo Coroleu, Montserrat Serra, Jordi Tor and Robert Muga

Appendix A:

Table S1. Obstetric characteristics of 51 parturient women admitted to the Obstetric Unit in September 2011 and March 2012.

Characteristics	N = 51 n (%)
Age (Median (IQR))	30 (26–34)
Obstetric History (TPAL)	
Number of Term Births (T)	
0	22 (43.1)
1	23 (45.1)
2	4 (7.9)
3	2 (3.9)
Number of Preterm Births (P)	
0	51 (100.0)
Number of Abortions (A)	
0	36 (70.6)
1	9 (17.6)
2	4 (7.9)
3	2 (3.9)
Number of Living Children (L)	
0	22 (43.1)
1	23 (45.1)
2	4 (7.9)
3	2 (3.9)
Comorbidities	25 (49.0)
Regular pharmacological treatment	16 (31.4)

TPAL: number of term births (T)/number of preterm births (P)/number of abortions (A)/number of living children (L).

Table S2. Pregnancy outcomes of 51 parturient women admitted to the Obstetric Unit in September 2011 and March 2012.

Pregnancy Variables	N = 51 n (%)
Risk Pregnancy Level (n = 44)	
No risk	10 (22.7)
Moderate	18 (40.9)
High	16 (36.4)
Very high	0 (0)
Completed Clinical Visits (n = 41)	
80%–100%	31 (75.6)
51%–79%	5 (12.2)
≤50%	5 (12.2)

Table S2. Cont.

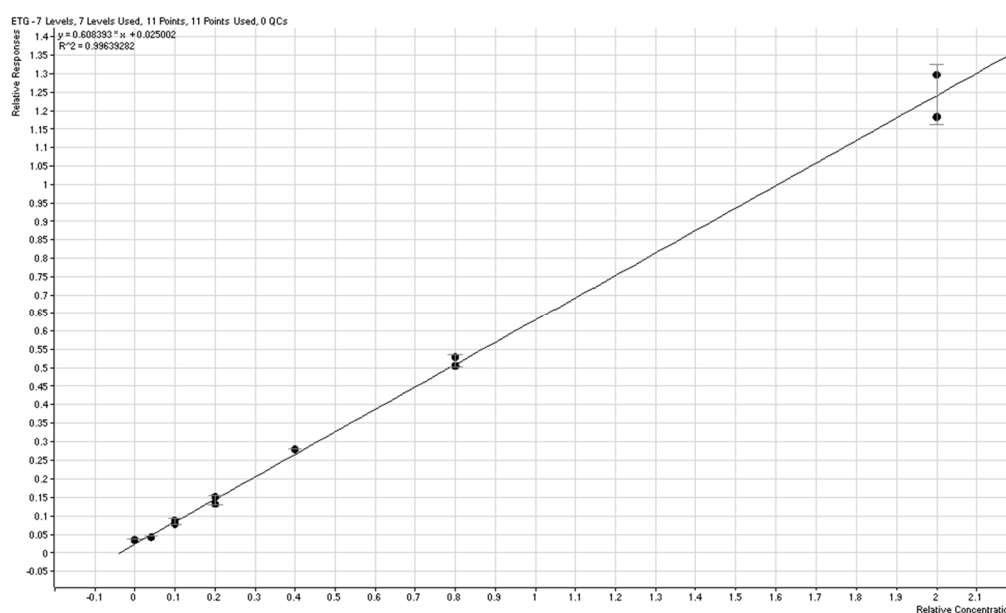
Pregnancy Variables	N = 51 n (%)
Analysis of First Trimester (n = 42), median (IQR)	
Haemoglobin ($\times 10^9/L$)	11.7 (11.4–12.5)
Platelets ($\times 10^9/L$)	217 (190–256)
Ferritin (ng/mL)	16 (11–28.9)
Ultrasound of First Trimester (n = 39)	
Normal	35 (89.7)
Altered	4 (10.3)
Weight Increase During Pregnancy (n = 27), median (IQR)	11.3 (8.4–16.3)
Type of Birth (n = 52 *)	
Eutocic	29 (55.7)
Dystocia (forceps, vacuum, other)	9 (17.3)
Caesarean (elective or urgent)	14 (27.0)
Gestational age in weeks, median (IQR)	40 (38.9–41)

* One of the women gave birth to twins.

Table S3. Characteristics of 52 newborns.

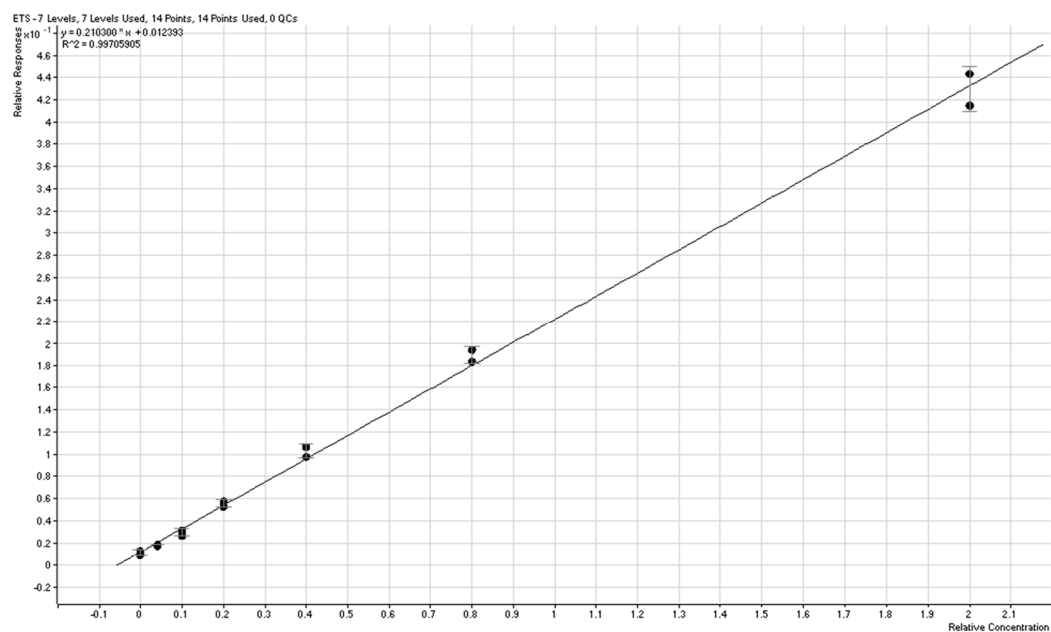
Characteristics	N = 52 n (%)
Apgar Test Score at Birth	
8	3 (5.8)
9	47 (90.4)
10	2 (3.8)
Apgar Test Score at 5 min	
10	52 (100.0)
Immediate Birth Complications	
No	50 (96.2)
Yes	2 (3.8)
Birth weight (g), median (IQR)	3240 (3050–3675)

Appendix B:



(a) EtG

Figure S1. Cont.



(b) EtS

Figure S1. Selected linear calibration curves for EtG (a) and EtS (b).