

Supplementary Materials: Melanoma-Derived $BRAF^{V600E}$ Mutation in Peritumoral Stromal Cells: Implications for *in Vivo* Cell Fusion

Zsuzsanna Kurgyis, Lajos V. Kemény, Tünde Buknicz, Gergely Groma, Judit Oláh, Ádám Jakab, Hilda Polyánka, Kurt Zänker, Thomas Dittmar, Lajos Kemény and István B. Németh

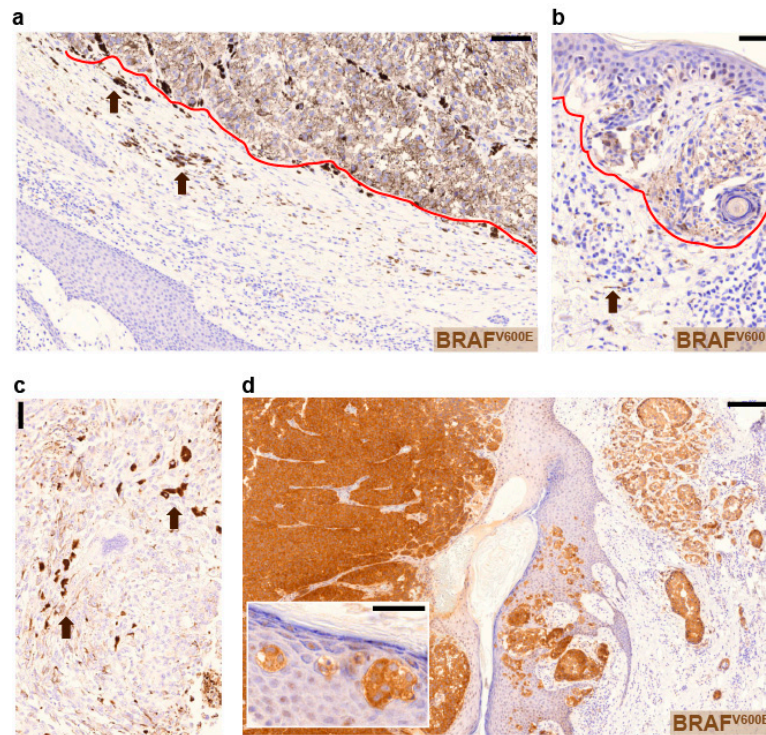


Figure S1. $BRAF^{V600E}$ is not expressed in peritumoral stromal cells $BRAF^{WT}$ melanoma. (a,b) $BRAF^{WT}$ melanoma tissue sample stained with $BRAF^{V600E}$ (light brown) and hematoxylin (blue) (c) $BRAF^{WT}$ melanoma tissue sample stained without primary antibody; (d) $BRAF^{V600E}$ melanoma tissue sample stained with $BRAF^{V600E}$ (light brown) and hematoxylin (blue). Red lines demarcate tumor cells and brown arrows (a–c) indicate dark brown granules that correspond to melanin pigments. Scale bars indicate 100 μ m (a); 50 μ m (b, c and d small panel) and 200 μ m (d large panel).