

Supplementary Materials: LC-MS/MS Analysis Unravels Deep Oxidation of Manganese Superoxide Dismutase in Kidney Cancer

Zuohui Zhao, Kazem M. Azadzo, Han-Pil Choi, Ruirui Jing, Xin Lu, Cuiling Li, Fengqin Wang, Jiaju Lu and Jing-Hua Yang

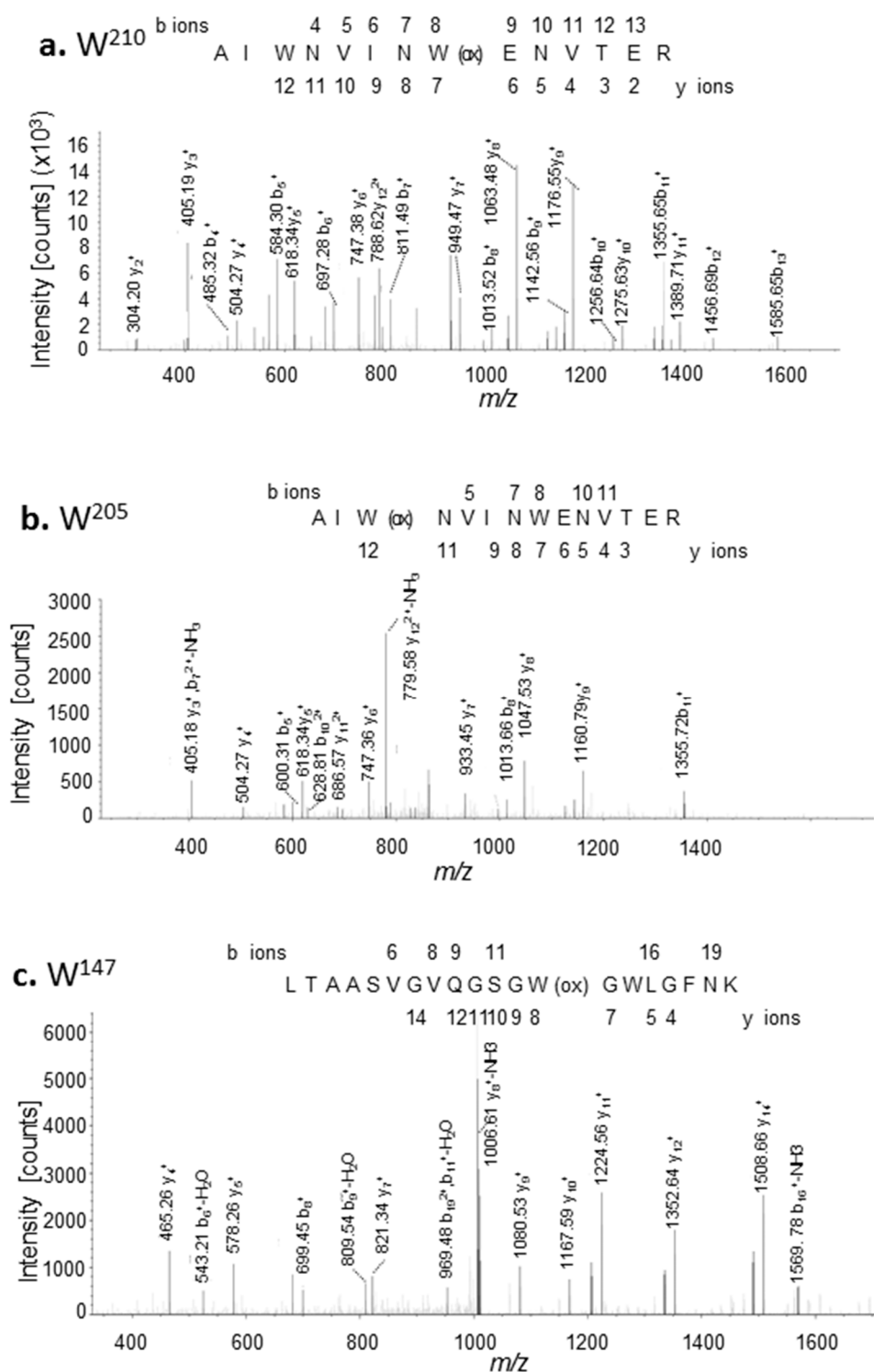


Figure S1. Cont.

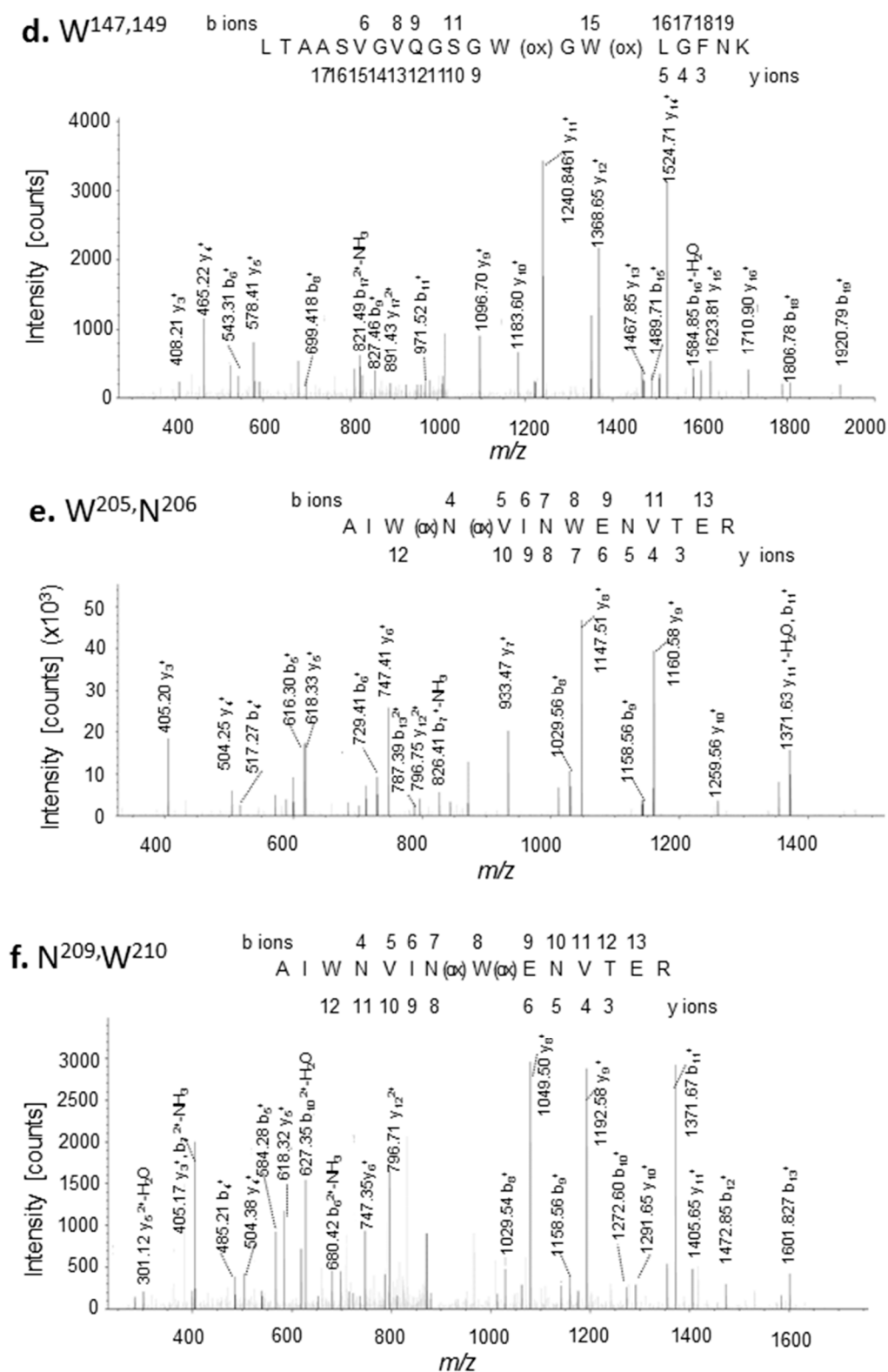


Figure S1. Cont.

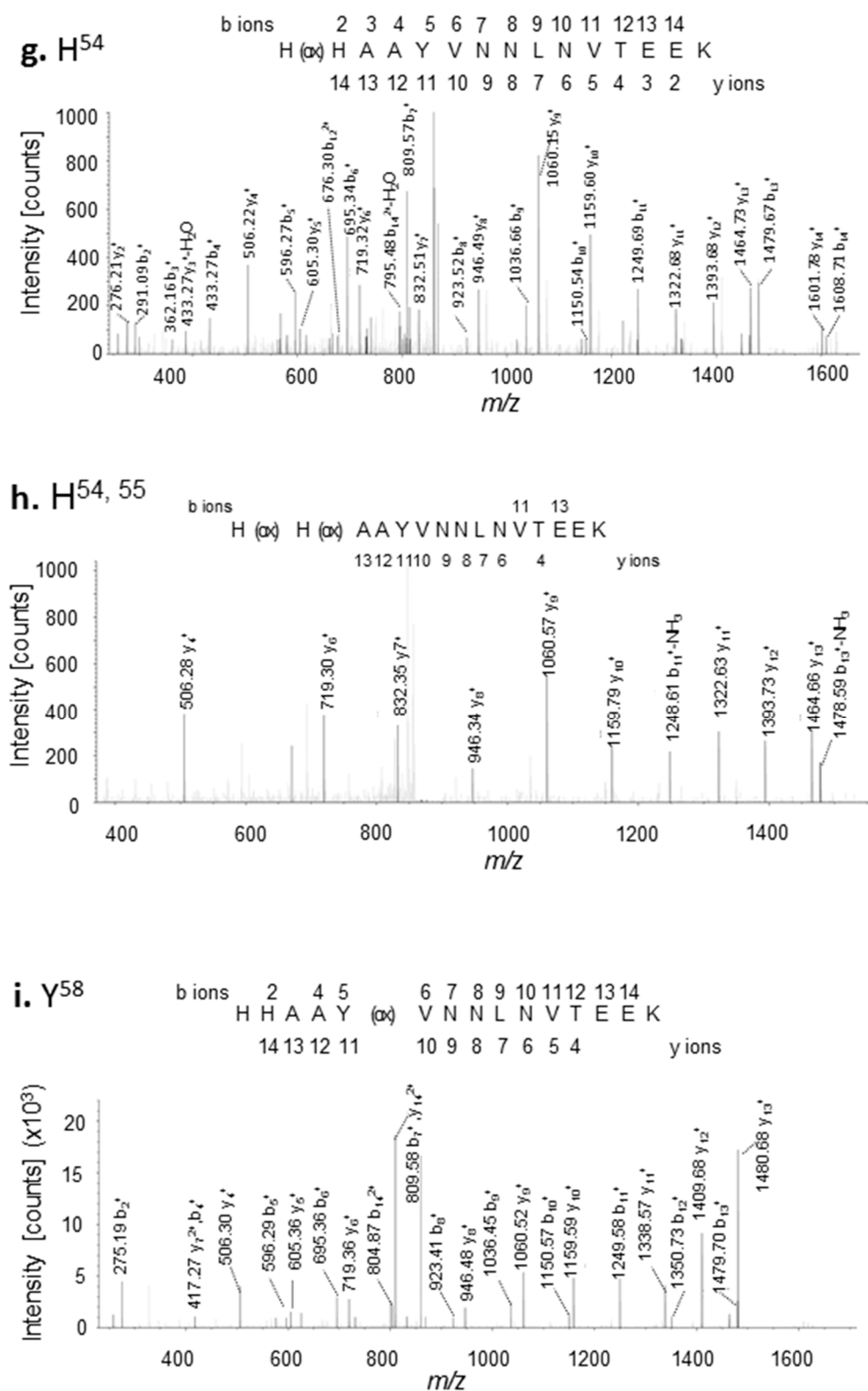


Figure S1. Cont.

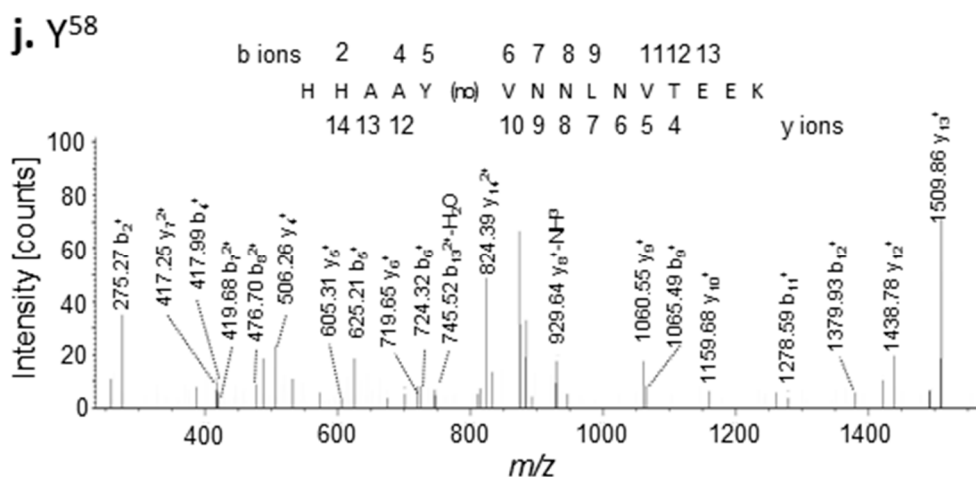


Figure S1. Mass spectra of oxidized/nitrated amino acid residues in MNSOD. The CID spectra of trypsin-digested peptides were searched against human database with a dynamic oxidative modification (+15.99) at some specific amino acid residues or with a dynamic nitrative modification (+44.98) at tyrosine residues. Typical oxidized peptides at W²¹⁰ (a); W²⁰⁵ (b); W¹⁴⁷ (c); W^{147,149} (d); W²⁰⁵ and N²⁰⁶ (e); N²⁰⁹ and W²¹⁰ (f); H⁵⁴ (g); H^{54,55} (h); Y⁵⁸ (i) and typical nitrated peptide at Y⁵⁸ (j) are shown. The matched b and y ions are labeled with their mass weights in Dalton. The peptide sequence is shown on the top of each panel, with the matched b and y ions labeled on the top or bottom of the residues, respectively. ox: oxidation, no: nitration.