

Supplementary Materials: Shp2 Plays a Critical Role in IL-6-Induced EMT in Breast Cancer Cells

Xuan Sun, Jie Zhang, Zhiyong Wang, Wei Ji, Ran Tian, Fei Zhang and Ruifang Niu

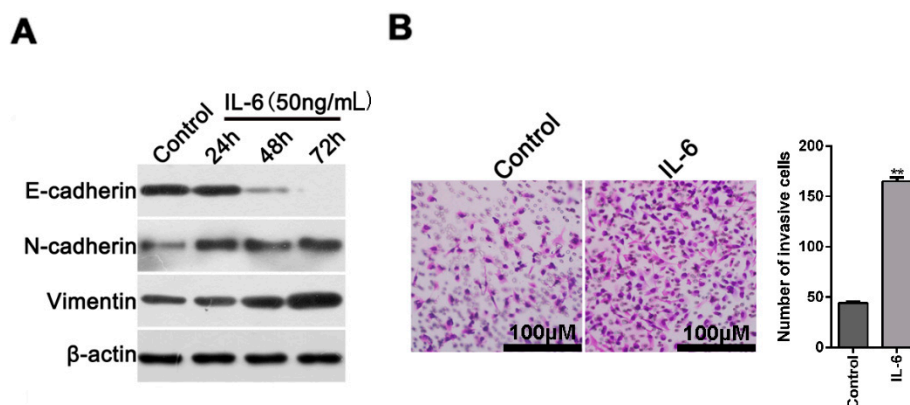


Figure S1. Exogenous IL-6 treatment induces a significant increase in cell invasive ability in vitro. (A) Western blot analysis of E-cadherin, N-cadherin, Vimentin expression in MDA-MB-468 cells exposed to 50 ng/mL of IL-6 for 24, 48 and 72 h; (B) Transwell assay show the invasive ability of MDA-MB-468 cells in the presence or absence of IL-6. Data are expressed as mean \pm SD from five independent fields, ** $p < 0.01$.