

Supplementary Materials

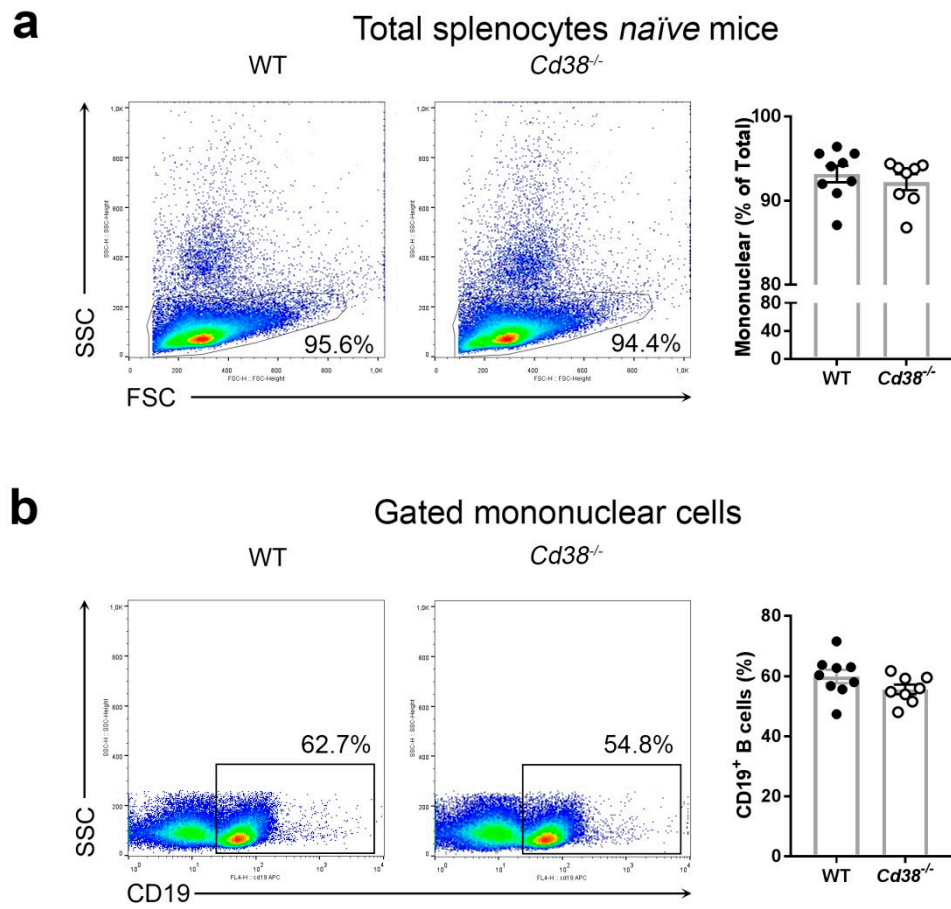
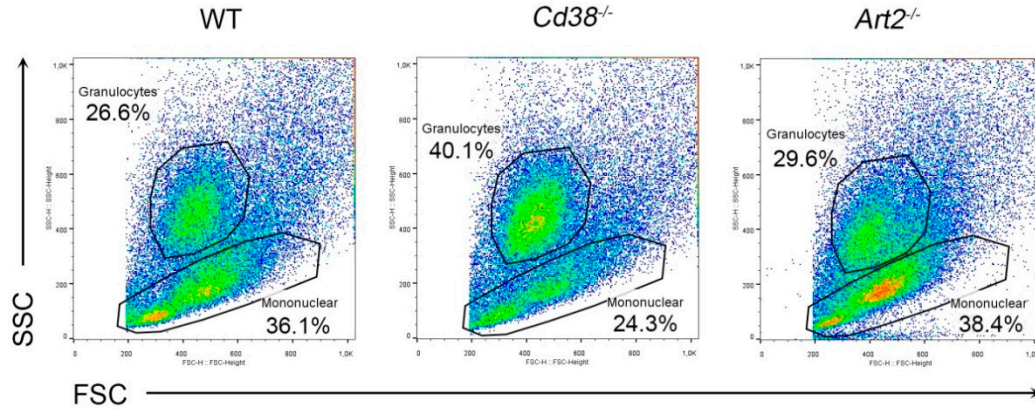


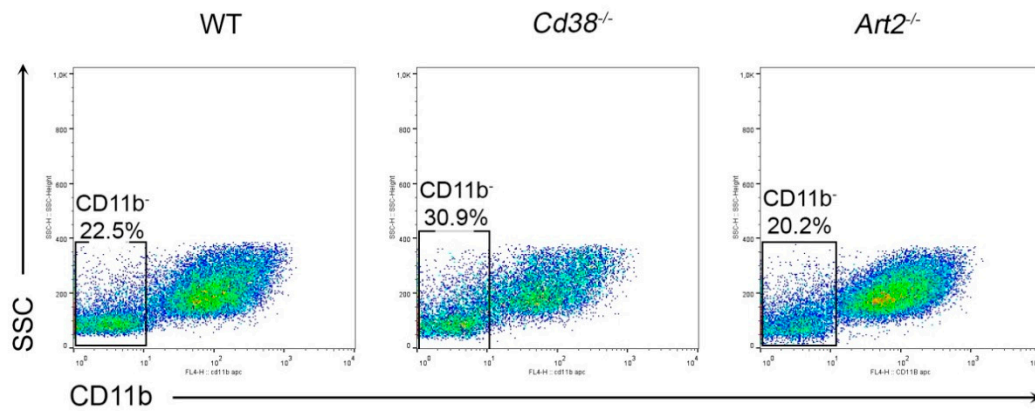
Figure S1. Related to Figure 1. Gating strategy for immunophenotyping splenocyte B cells from naïve *Cd38^{-/-}* and WT mice before showing CD1d^{hi}CD5⁺ B cell frequencies in Figure 1. Percentages of mononuclear and total B cells are shown.

Gating strategy for pDCs from PECs

Total PECs 2 weeks Pristane



Gated mononuclear cells



Gated CD11b⁻ cells

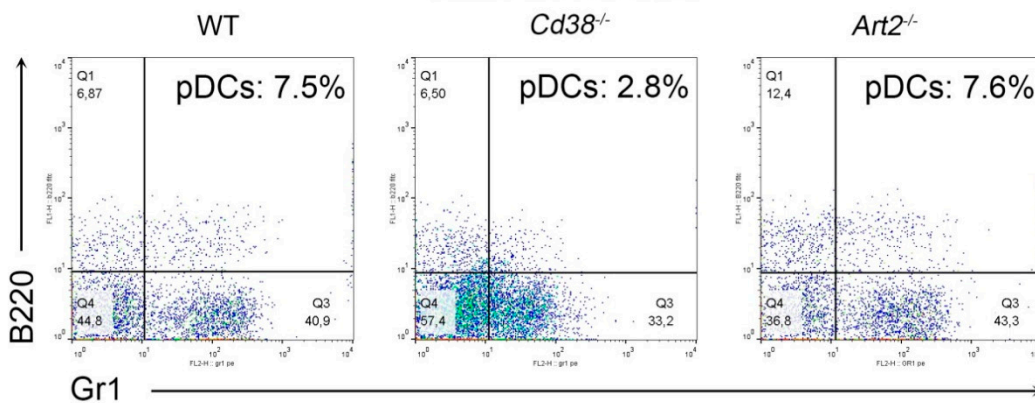
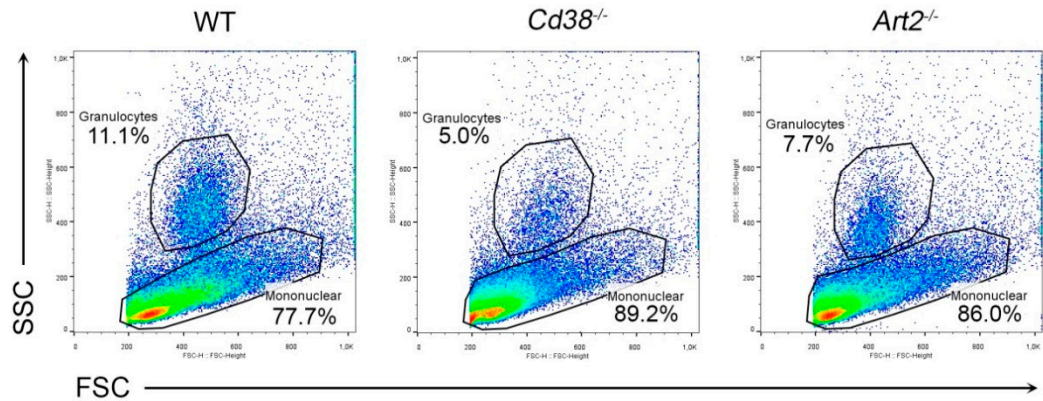


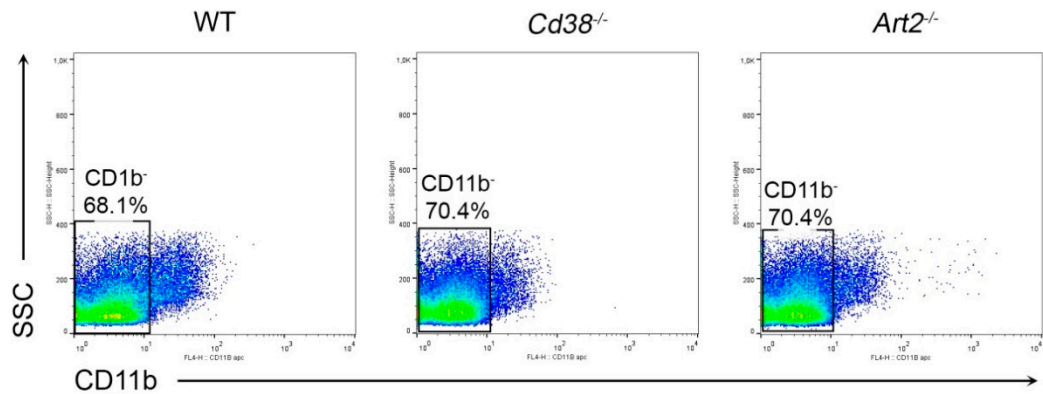
Figure S2. Related to Figure 4. Gating strategy for immunophenotyping pDCs from PECs of mice injected with pristane 2 weeks before. pDCs correspond to the double positive cells for Gr1 and B220 of the gated CD11b⁻ subpopulation.

Gating strategy for pDCs from splenocytes

Total splenocytes 2 weeks Pristane



Gated mononuclear cells



Gated CD11b⁻ cells

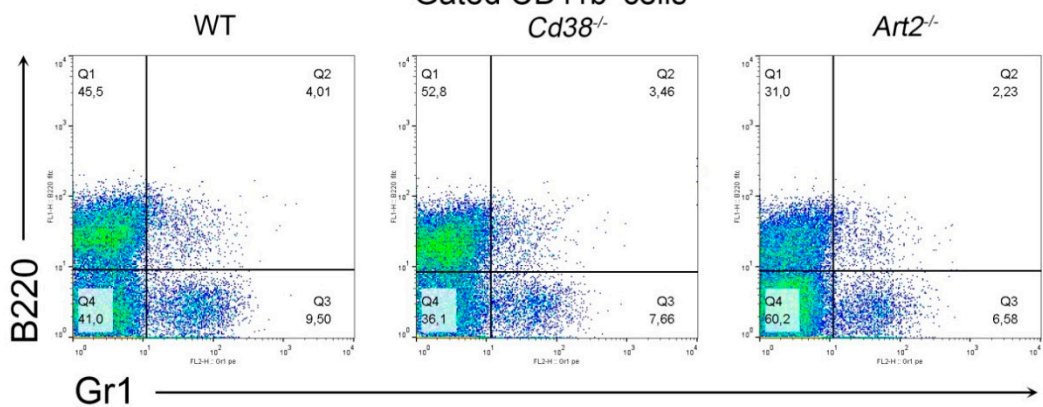


Figure S3. Related to Figure 4. Gating strategy for immunophenotyping pDCs from splenocytes of mice injected with pristane 2 weeks before. pDCs correspond to the double positive cells for Gr1 and B220 of the gated CD11b⁻ subpopulation.