

>MaRop5g

ATGAGCGCGTCGAGGTTTATAAAGTGCCTCACGGTGGGGGACGGTGCCGTCGGCAAGACTTGCATGCTTAT
CTCCTACACCAGCAACACTTTCCCCACGGATTATGTTCTACCGTTTTTGACAATTCAGCGCAAATGTAGTG
GTGGATGGTAACACAGTTAACTTAGGTTTGTGGGATACTGCAGGCCAAGAGGATTACAATAGATTAAGACCT
TTGAGCTACCGTGGTGCAGATGTTTTCTTGCTTGCTTTCTCTCATTAGTAAAGCCAGCTATGAAAATGTTGC
CAAGAAGTGGATTCTGAGCTAAGGCACTATGCACCTGGTGTGCCATAATTCTTGTTGGAACAAAGCTTGA
TCTTCGGGATGAGCAGCAGTTCTTTATAGATCACCCAGGTGCTGTTCCATAAGTACCGCTCAGGGGGAGGA
GCTGCGGAAGCAAATAGGTGCTGCTTCGTACATAGAGTGCAGTTCAAAGACTCAGCAAAATGTCAAGGCGG
TATTTGATGCGGCCATCAAGGTCGTGCTTCAGCCACCAAGCAGAAGAAGAAAAAAGCAACAGAAAGG
TTGCTCCATATTGTGA

MSASRFIKCVTVGDGAVGKTCMLISYTSNTFPTDYVPTVFDNFSANVVVDGNTVNLGLWD
TAGQEDYNRLRPLSYRGADVFLAFSLISKASYENVAKKWIPELRHYAPGVPIILVGTKL
DLRDEQQFFIDHPGAVPISTAQGEELRKQIGAASYIECSSKTQQNVKAVFDAAIKVVLQP
PKQKKKKKQKGCIL-

Figure S1. Full-length cDNA and amino acid sequence of *MaROP5g* from banana plants.

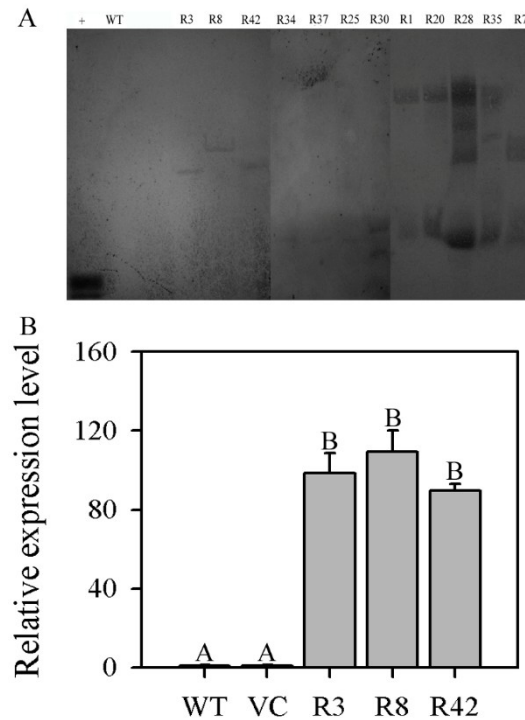


Figure S2. Southern blot analysis and qRT-PCR analysis of *MaROP5g* transgenic plants in *A. thaliana*. (A) Southern blot; (B) qRT-PCR. +: positive control. WT: wild-type. R3, R8, R42, R34, R37, R25, R30, R1, R20, R28, R35, R71: *MaROP5g* transgenic plants.