

Figure S1. Multiple sequence alignment of membrane-bound carbonic anhydrase proteins: pufferfish CA XII, human CA XII, human CA VI, and human CA IV. The red colored hollow boxes show the conserved cysteine residues that likely form a disulfide bond in the CA proteins.

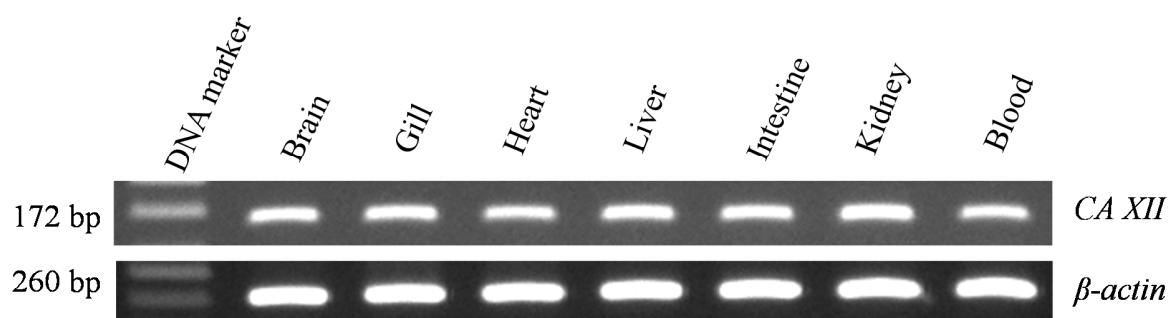


Figure S2. mRNA expression of carbonic anhydrase CA XII in different tissues (brain, gill, heart, liver, intestine, kidney and blood) of pufferfish (*Takifugu rubripes*) quantified by reverse transcription polymerase chain reaction (RT-PCR). β -actin was used as internal control.