

Figure S1. Promoter fragments of defense-related genes and purified recombinant AtSR1 protein were used in EMSA assay.

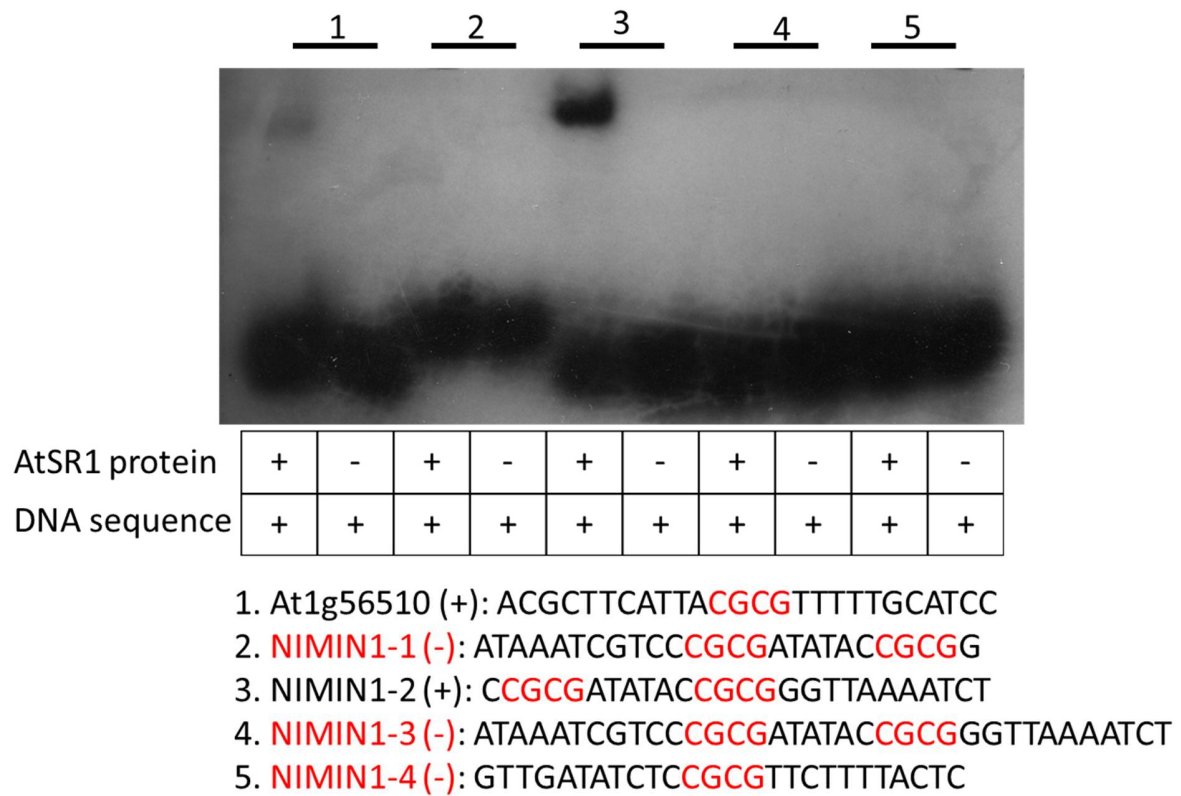


Figure S2. Promoter fragments of defense-related genes and purified recombinant AtSR1 protein were used in EMSA assay.

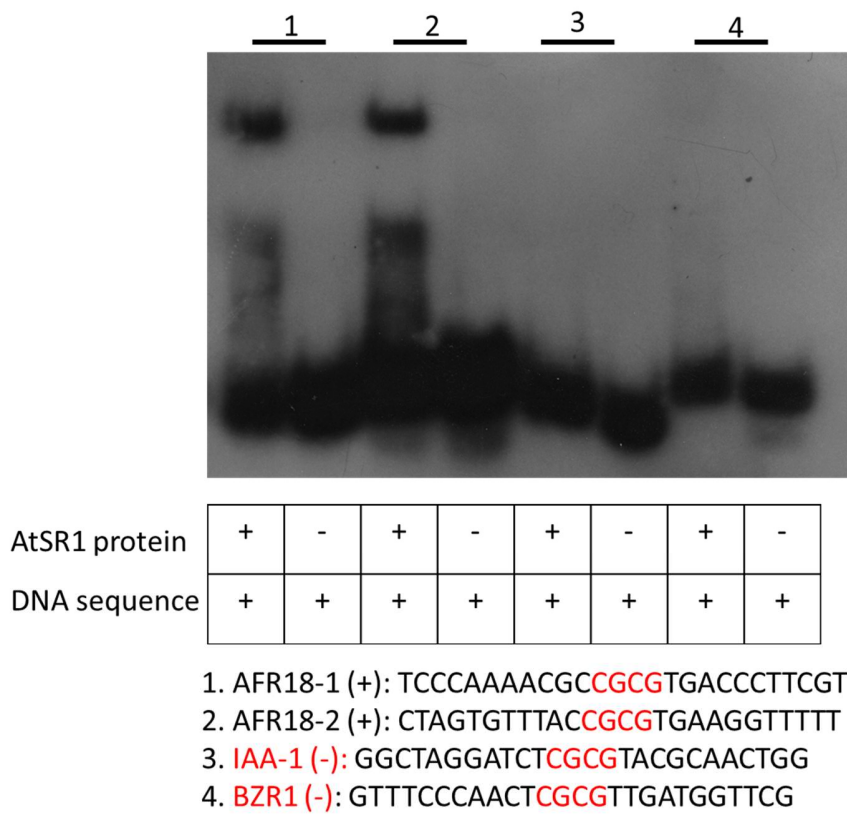


Figure S3. Promoter fragments of growth-related genes and purified recombinant AtSR1 protein were used in EMSA assay.

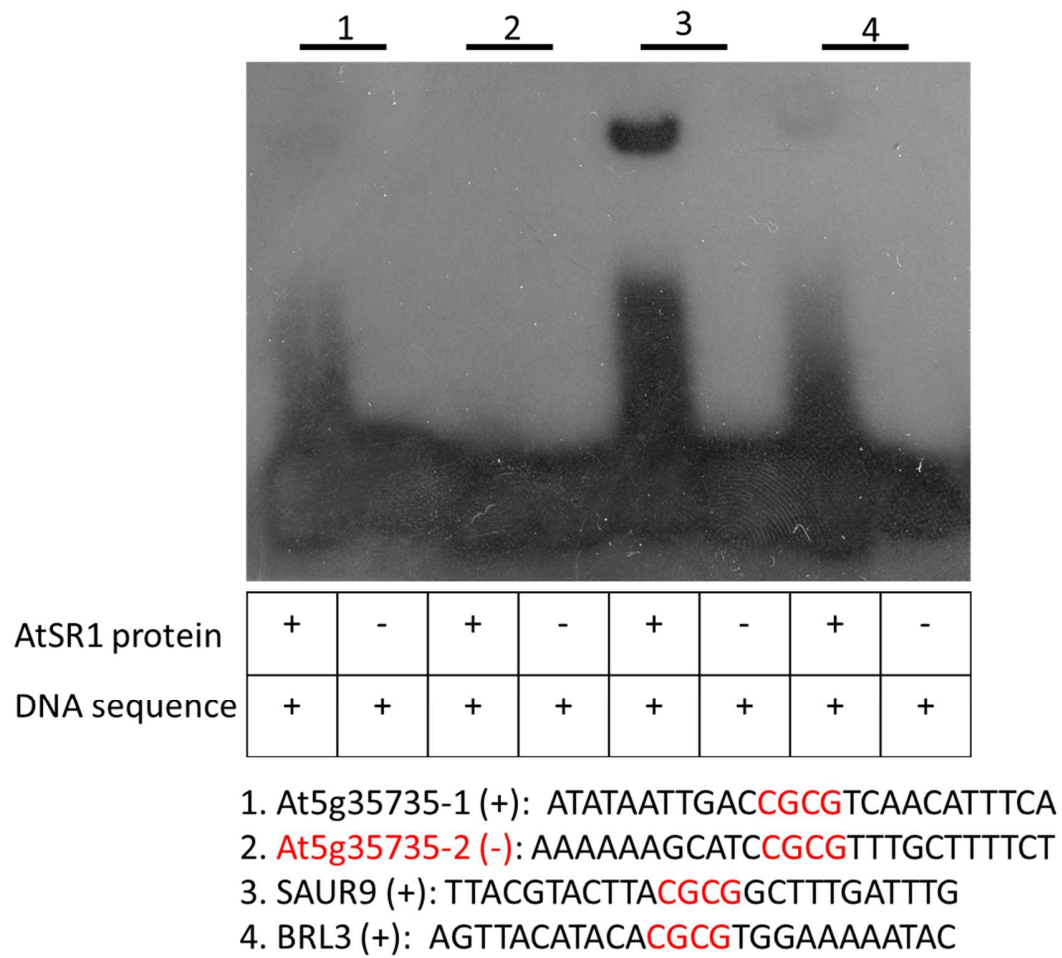


Figure S4. Promoter fragments of growth-related genes and purified recombinant AtSR1 protein were used in EMSA assay.